

**ALASKA DEPARTMENT OF FISH AND GAME  
REPORT TO THE NORTH PACIFIC FISHERY MANAGEMENT COUNCIL**

Fisheries managed by the State of Alaska since the last council report include those for crab and groundfish.



**Aleutian Islands Golden King Crab**

The 2013/14 Area O (Aleutian Islands) commercial golden king crab fishery opened August 15, 2013. The total allowable catch (TAC) is 6.29 million pounds. The TAC is apportioned east and west of 174° W longitude. The Eastern TAC is 3.31 million pounds, with the IFQ TAC set at 2.979 million pounds. The Eastern Aleutian Islands IFQ and CDQ quotas have been fully harvested and the fishery is now closed.

The Western TAC is 2.98 million pounds, with the IFQ harvest set at 2.682 million pounds. Catch for this fishery and the Adak Community Allocation Fishery is confidential given the number of participants. The golden king crab fishery in the Aleutian Islands remains open through May 15, 2014.

**Aleutian Islands Golden King Crab**

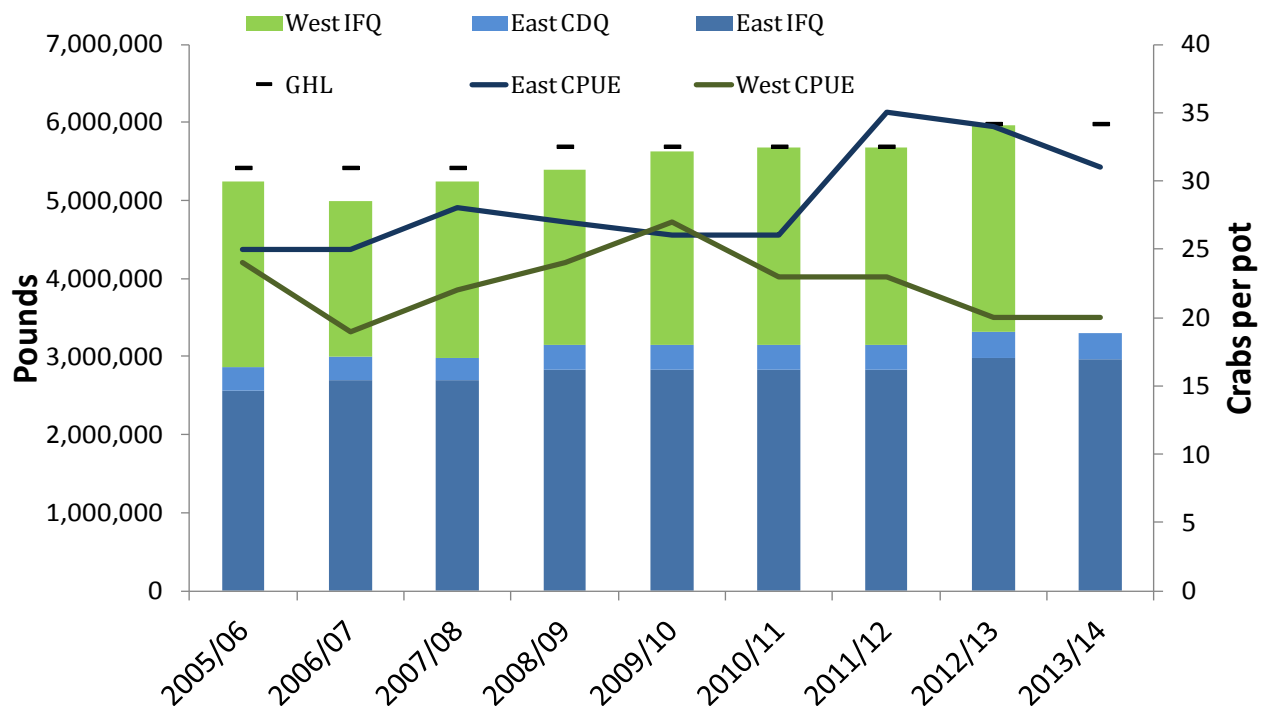


Figure 1. Aleutian Islands golden king crab harvest by area, 2005/06 – 2013/14.

**Bristol Bay Red King Crab**

The Bristol Bay red king crab fishery opened on October 15, 2013. The TAC for this fishery was 8.6 million pounds, a 9.5% increase from the 2012/13 season, and was apportioned 7.74 million pounds to the IFQ fishery and 860,000 pounds to the CDQ fishery. A majority of the fishing effort was completed by the second week of November, similar to last year. Sixty-two vessels participated in the IFQ fishery and ten vessels harvested CDQ quota. Preliminary data

suggest that CPUE was again high this year averaging 28 crabs per pot and average crab weight was again high at 6.9 pounds per crab.

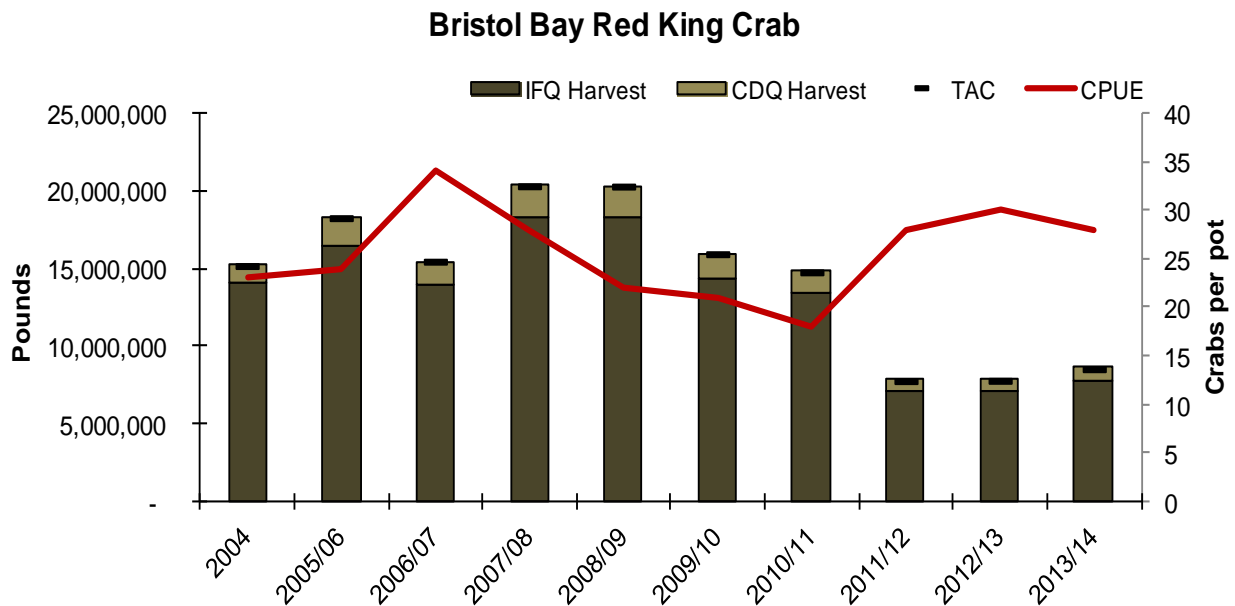


Figure 2. Bristol Bay red king crab harvest, 2004 – 2013/14.

### Bering Sea Snow Crab

The Bering Sea snow crab fishery opened on October 15, 2013 and will remain open through May 15, 2014 in the Eastern Subdistrict and through May 31, 2014 in the Western Subdistrict. The 2013/14 snow crab TAC is 53.98 million pounds, a 18.6% decrease over the 2012/13 season TAC. Ten percent of the TAC is allocated to the CDQ fishery. To date, four vessels have made landings and harvest information is confidential.

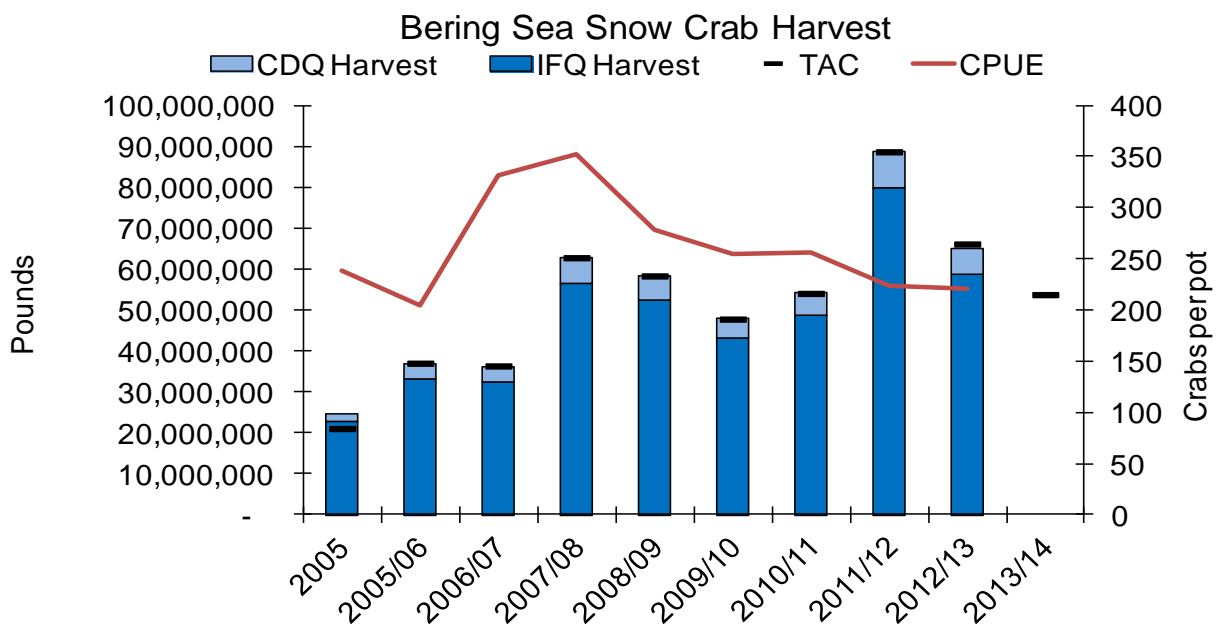


Figure 3. Bering Sea snow crab harvest, 2005 – 2013/14.

DECEMBER 2013

To protect the Pribilof blue king crab stock, the snow crab fishery is not open in the following ADF&G statistical areas: 675730, 675800, 685730, 695730, 685700, 695700, 695701, 705701, 705703, 695631, 695632, the northeast half of 705630, the northwest half of 685630, and the portions of 735830 and 745830 that are south of 58°39' N lat.

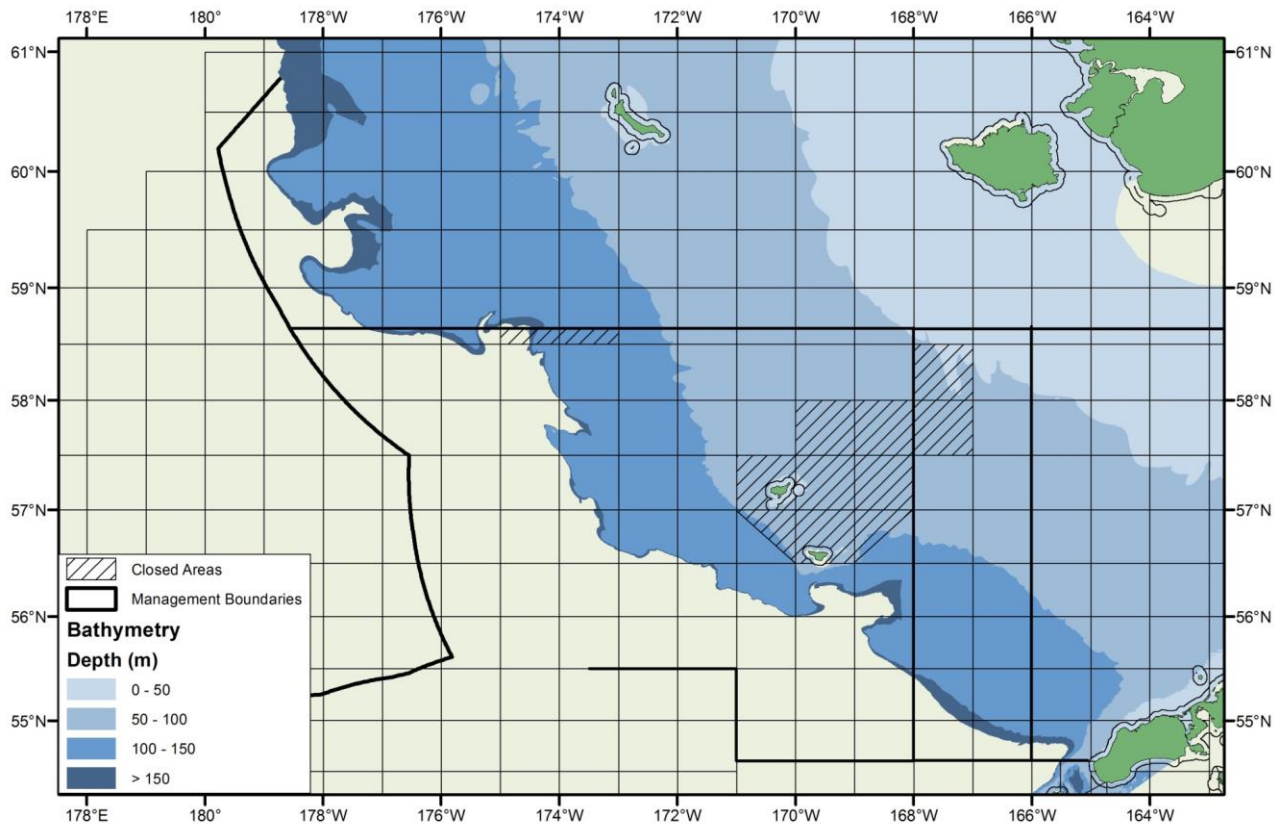


Figure 4. Closed areas to protect Pribilof blue king crab stock from overfishing in 2013/14.

### **Bering Sea Tanner crab**

The 2013 area-swept survey estimate of mature female Tanner crab biomass in the Bering Sea District was above the harvest strategy threshold for mature female biomass, therefore the Bering Sea District Tanner crab fishery opened for the 2012/13 fishing season. Because the fishery was closed last year (and has been closed since the 2009/10 season) due to not meeting the mature female threshold, the regulatory harvest strategy dictates that TACs are reduced by one-half in the initial opening year.

The Bering Sea Tanner crab fishery opened on October 15, 2013 and will remain open through March 31, 2014. The fishery is managed east and west of 166° N lat.; the 2013/14 TAC is 1.43 million pounds in the Eastern Subdistrict and 1.645 million pounds in the Western Subdistrict. CDQ fisheries are allocated 10% of each of the Eastern and Western Subdistrict TACs. Tanner crab may be retained as bycatch (up to 5%) in either the directed Bristol Bay red king crab or Bering Sea opilio crab fisheries.

Closed areas to protect the Pribilof blue king crab stock that apply during the snow crab fishery are in effect for the Tanner crab fishery.

## Bering Sea Tanner Crab

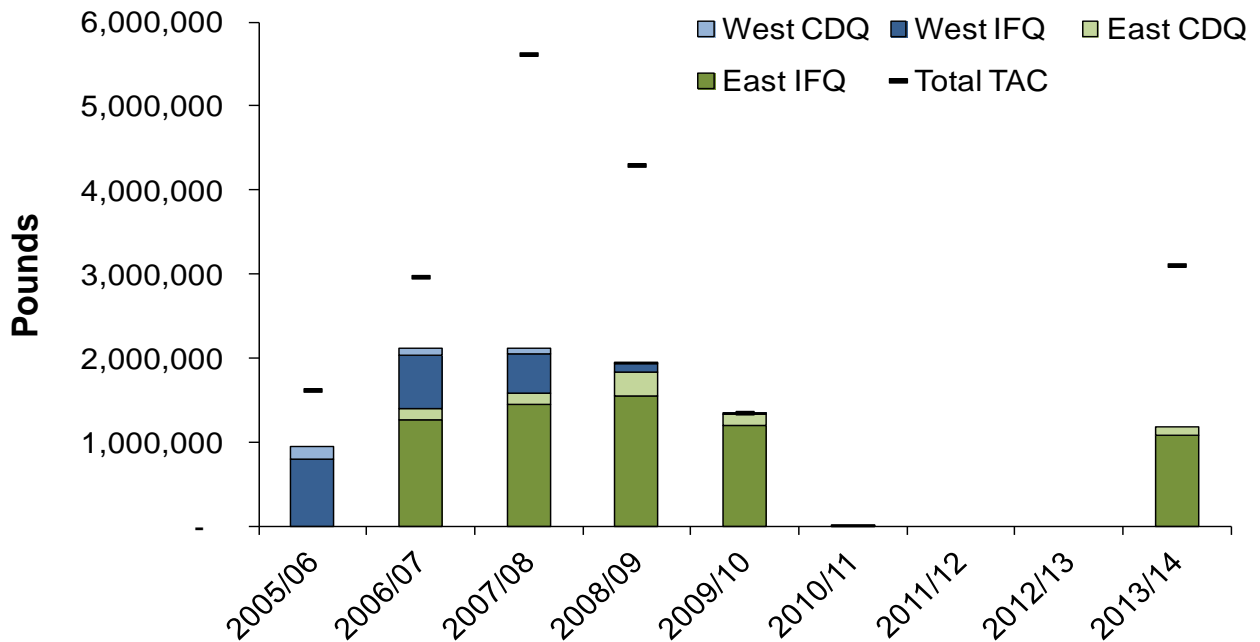


Figure 5. Bering Sea Tanner crab harvest by area, 2005/06 – 2013/14.

### Westward Region Pacific cod Kodiak

The Kodiak state-waters Pacific cod fishery GHF was set at 13.58 million pounds and is allocated 50% to pot gear and 50% to jig gear (6.79 million pounds each). As previously reported, the pot fishery closed on April 2, 2013. The jig fishery has been open since March 15, 2013 and total harvest to date is 536,970 pounds. Jig effort was relatively low this season; 52 vessels registered for the fishery.

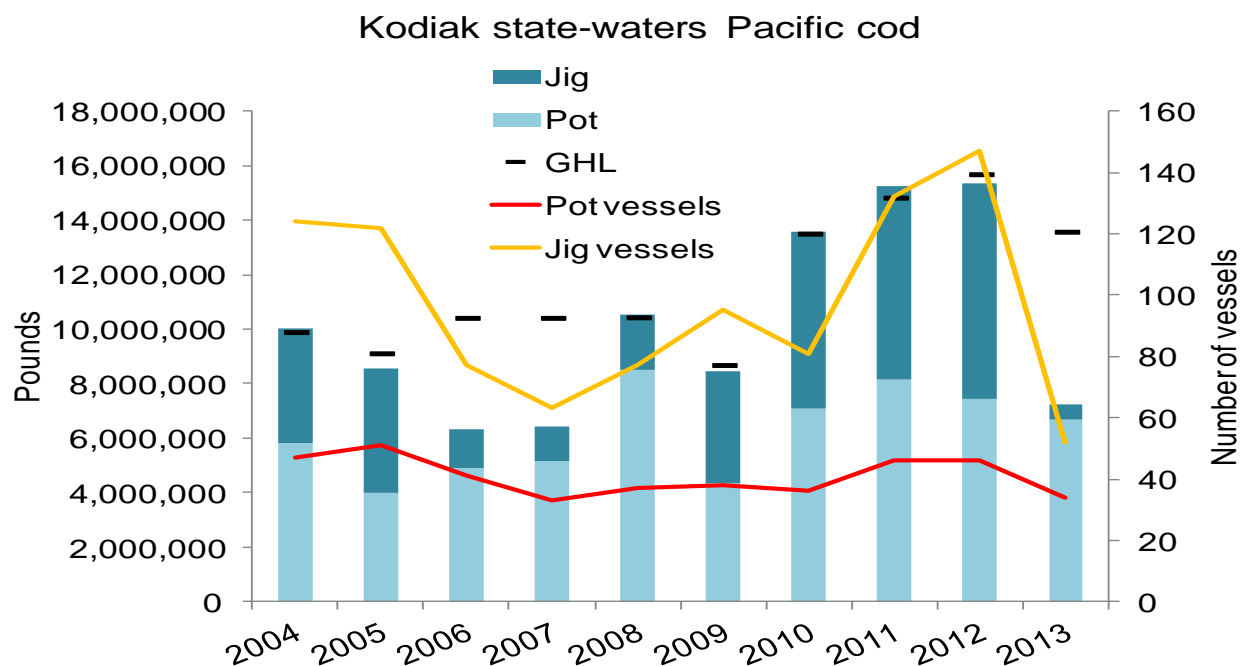


Figure 8. Kodiak state-waters Pacific cod fishery harvest by gear type, 2004 – 2013.

### Aleutian Islands

The 2013 GHL for the Aleutian Islands District state-waters Pacific cod fishery was 20,304,366 pounds and is calculated as three percent of the Bering Sea-Aleutian Islands ABC. The GHL is split 70/30 between an A and B season. Thirteen vessels participated in 2013, and harvest remains confidential because all deliveries were made to one processor. The 5-year average harvest is 7.62 million pounds.

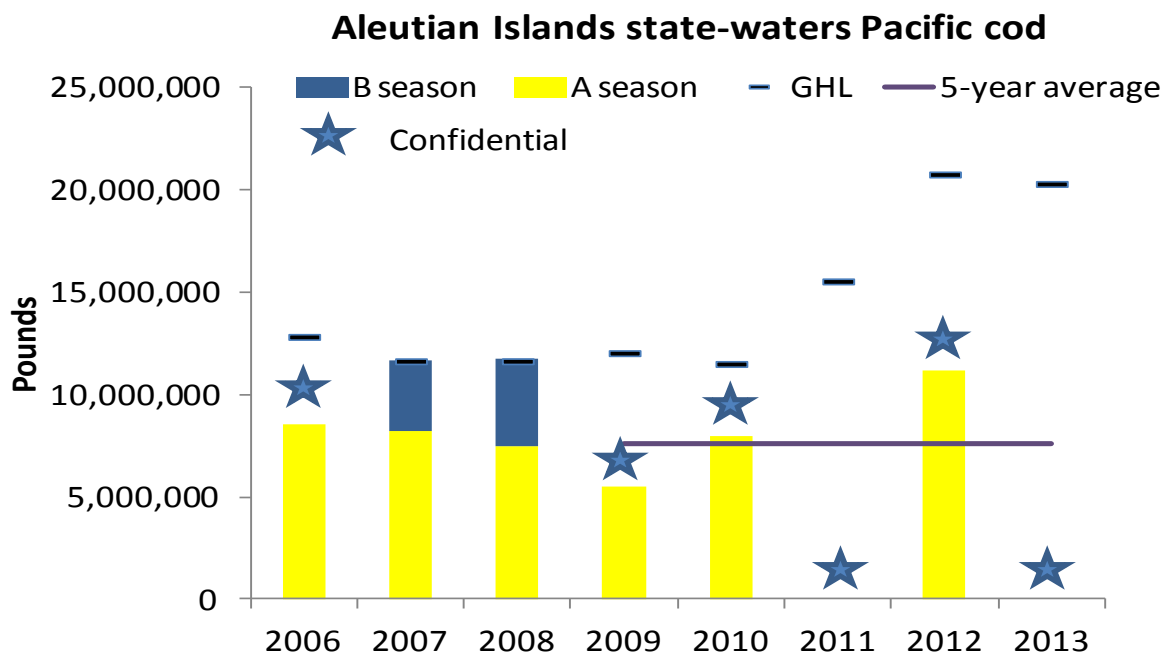


Figure 9. Aleutian Islands state-water Pacific cod fishery harvest by season, 2006 – 2013.

**Alaska Board of Fisheries**

<http://www.adfg.alaska.gov/index.cfm?adfg=fisheriesboard.meetinginfo>

**Work session, October 9 - 11, 2013**

ACR 2 – Not accepted – Implement a management plan for an open-access weathervane scallop fishery in waters of Alaska.

ACR 8 – Accepted, renamed as proposal 369; scheduled for Kodiak meeting – Implement a management plan for an open-access weathervane scallop fishery in waters of Alaska.

**Statewide Pacific cod, October 18 – 22, 2013**

***C=Carried, F=Failed, C/A= Carried as Amended, N/A=No Action***

<b><i>Statewide Pacific cod</i></b>		
C (7 – 0)	1	Clarify the term “estimated total allowable harvest”.
<b><i>Cook Inlet, Kodiak, and Chignik state-waters Pacific cod GHL</i></b>		
F (0 – 7)	2	Increase state-waters Pacific cod GHL in the Cook Inlet, Kodiak, and Chignik areas based on 10-year average parallel season Pacific cod catch.
C/A (7 – 0)	3	Increase Chignik Area state-waters Pacific cod GHL to 17.5 percent of the CGOA ABC. <b>No change in GHL, but opening date was moved from March 7 to March 1.</b>
N/A	4	Increase Chignik Area state-waters Pacific cod GHL to 17 percent of the CGOA ABC.
N/A	5	Increase Chignik Area state-waters Pacific cod GHL based on actual state waters harvest.
<b><i>Cook Inlet Pacific cod</i></b>		
F (0 – 7)	6	Open state-waters Pacific cod season to longline gear July 15, if GHL remains.
<b><i>Chignik Pacific cod</i></b>		
C (7 – 0)	13	Change date for rollover to all gear types of unharvested GHL.
F (0 – 7)	15	Change state-waters Pacific cod jig season opening date and create small vessel pot fishery.

<b><i>South Alaska Peninsula Pacific cod</i></b>		
F (0 – 7)	16 & 17	Modify boundary description of the South Alaska Peninsula groundfish area.
C/A (5 – 2)	18	Increase state-waters Pacific cod GHL to 50 percent of WGOA ABC. <b>Amended to increase GHL to 30% of WGOA ABC (5% increase)</b>
N/A	19 & 20	Increase state-waters Pacific cod GHL to 50 percent of WGOA ABC.
N/A	21	Increase state-waters Pacific cod GHL to 55 percent of WGOA ABC.
F (7 – 0)	23	Change state-waters Pacific cod season opening date for pot gear
F (7 – 0)	24	Change state-waters Pacific cod season opening date for pot gear to March 12 or seven days following closure of the federal WGOA pot A-season, whichever is later.
F (1-6)	28	Close state-waters surrounding Caton and Sanak Islands to nonpelagic trawl gear.
<b><i>Bering Sea – Aleutian Islands Pacific cod</i></b>		
N/A	29	Increase Aleutian Islands District state-waters Pacific cod GHL to 4.5 percent of federal Bering Sea/Aleutian Islands ABC.
C (7 – 0)	30	Clarify Aleutian Islands District state-waters Pacific cod GHL rollover provision from A to B season.
C (7 – 0)	31	Clarify Aleutian Islands District state-waters Pacific cod fishery bycatch provision with respect to state-federal jurisdiction.
C (7 – 0)	32	Amend Aleutian Islands District state-waters Pacific cod fishery management plan to address concurrent state-waters and federal Pacific cod seasons.
C (7 – 0)	33	Update Aleutian Islands District state-waters Pacific cod fishery management plan to identify Steller sea lion and essential habitat closure areas.
N/A	34	Place moratorium on new or expanded state-waters Pacific cod fisheries in Area O.
C/A (5 – 1)	35	Establish a state-waters Pacific cod fishery in the Bering Sea portion of Area O. <b>Amended to area between 164° W long. and 167° W long., pot gear only, GHL based on 3% of BSAI Pacific cod ABC. (Figure 10)</b>

N/A	36	Establish a state-waters Pacific cod fishery in the Bering Sea portion of Area O.
<b><i>Aleutian Islands Atka Mackerel</i></b>		
C/A (4 - 3)	37	Establish state-waters Atka mackerel fishery. <b>Amended to area between 172° W long. and 177° W long., seine gear, GHL based on 10% of EAI/BS Atka mackerel ABC. Pending no further action by the board this management plan would sunset December 31, 2016.</b>
<b><i>Teleconference on Atka mackerel – November 26, 2013</i></b>		
C (7-0)	37	Emergency petition to rescind action taken on Atka mackerel state waters fishery.

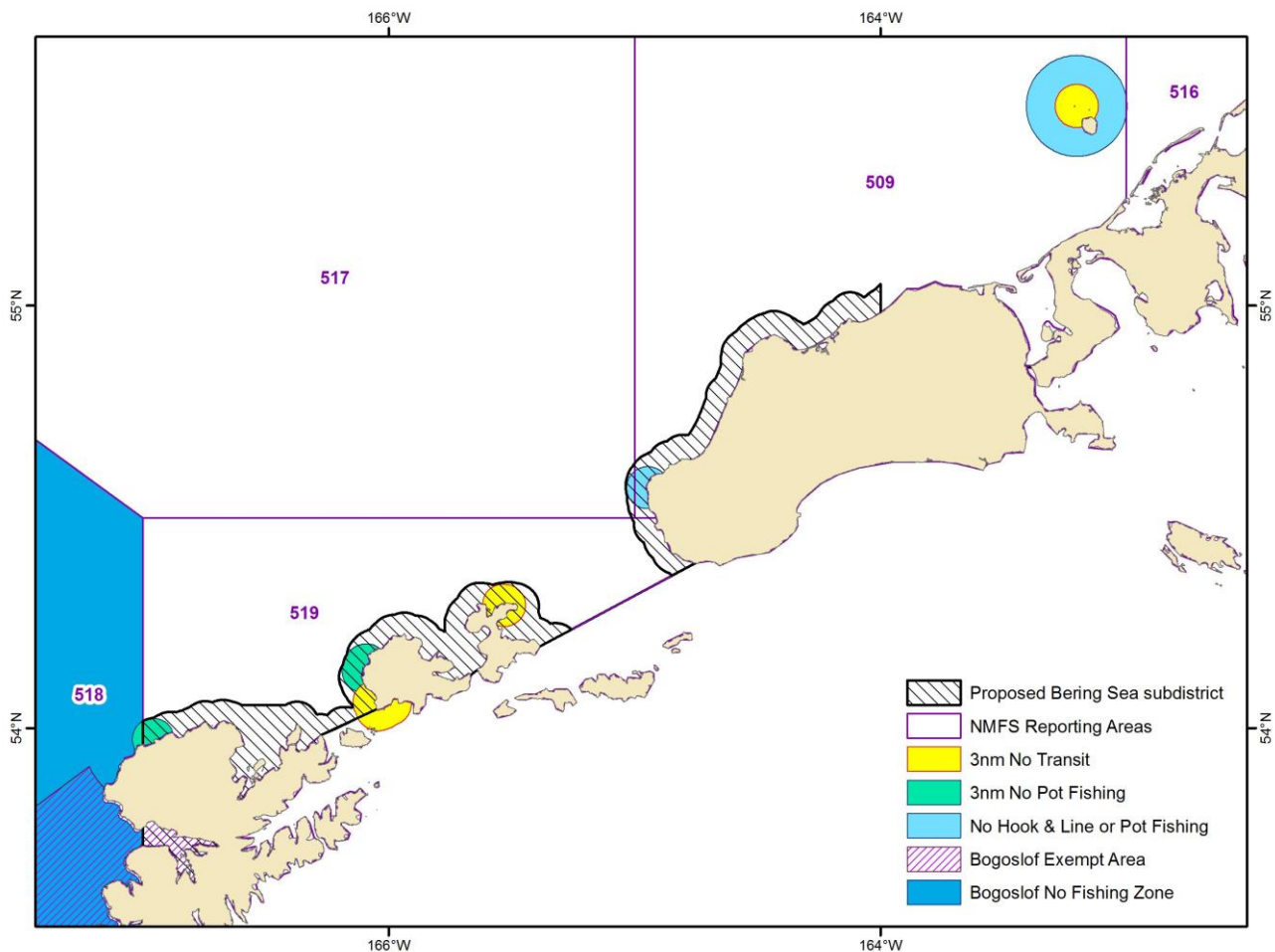


Figure 10. Bering Sea subdistrict state-water Pacific cod fishery and SSL closure areas.



**Chignik finfish**, December 5 – 6, 2013, and **Lower Cook Inlet Finfish**  
December 8 – 11, 2013, Anchorage Egan Center

- 43 Create management plans for state-managed fisheries for all Gulf of Alaska groundfish for vessels less than 58 feet using trawl gear. *(This proposal will be considered at the Chignik, Lower Cook Inlet, and Kodiak Finfish meetings.)*
- 44 Adopt a state-waters pollock fishery management plan, including provisions for seasons, gear, quotas, landing requirements, and observer coverage. *(This proposal will be considered at the Chignik, Lower Cook Inlet, and Kodiak Finfish meetings.)*
- 45 Require 100 percent observer coverage on vessels fishing for groundfish with trawl gear in state-waters management areas. *(This proposal will be considered at the Chignik, Lower Cook Inlet, and Kodiak Finfish meetings.)*

**Kodiak Finfish**, January 7 – 11, 2014, Kodiak

- 43, 44, 45 (see above).
- 101 Close Alitak Bay to trawl gear.
- 102 Prohibit nonpelagic trawling in state waters of Kodiak Area.

**Statewide King and Tanner Crab, and Supplementary Items**  
March 17 – 21, 2014, Anchorage Sheraton

The Council will be presented an overview of these proposals at the February 2014 meeting.

---

*Prepared by Karla Bush*