

Summary of the IPHC 2013 stock assessment

IPHC staff
11 December, 2013

Presentation to the NPFMC

Outline

- Assessment
 - Data summary
 - Results for 2014
 - Decision table
- Apportionment
- Halibut Bycatch Work Group report
- 2014 IPHC Annual Meeting

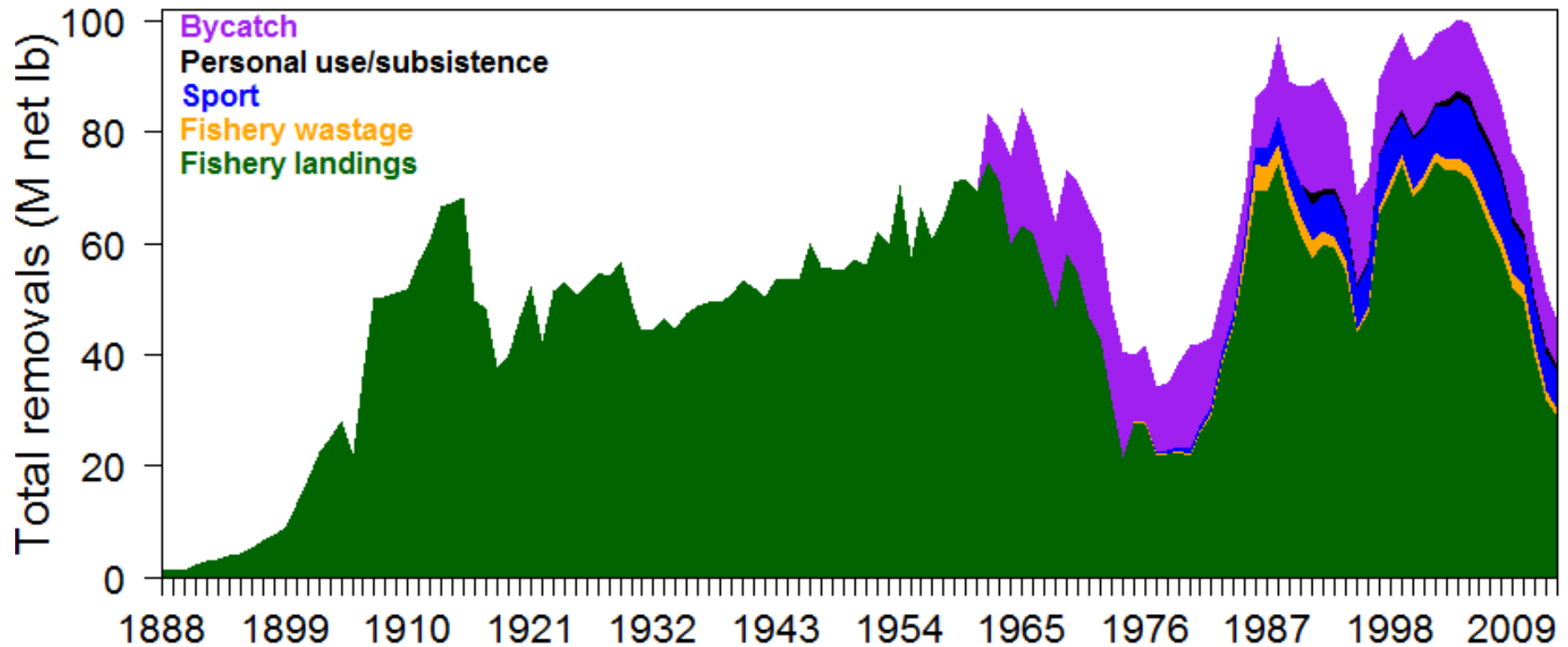


Assessment summary

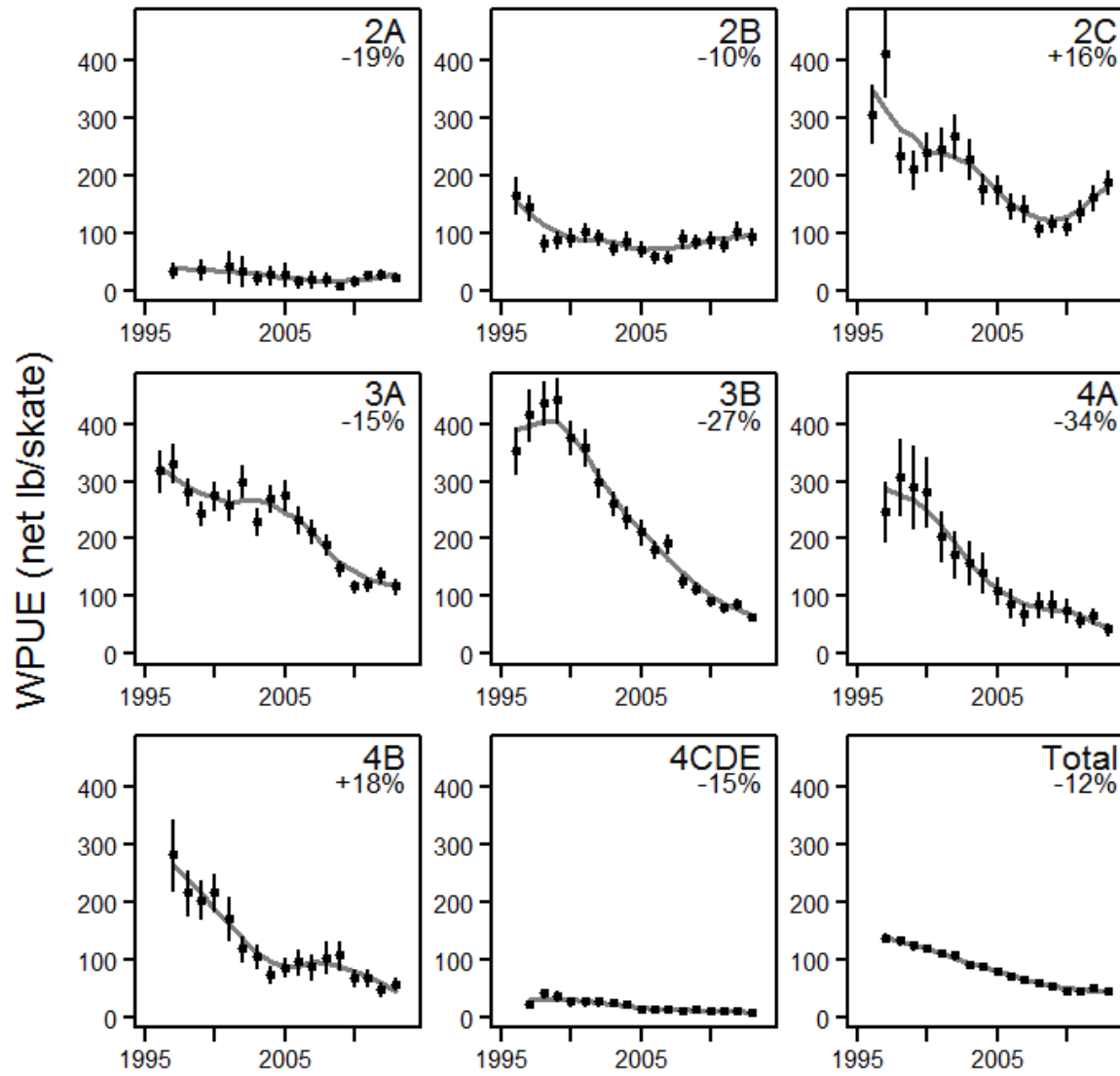
- Survey and fishery trends down in 2013
- Major data reconstruction of historical datasets during 2013 provided additional perspectives
- Comparative models
 - Stronger assessment
 - Better estimation of uncertainty
 - Historical perspective
- 2013 results consistent with 2012 projections



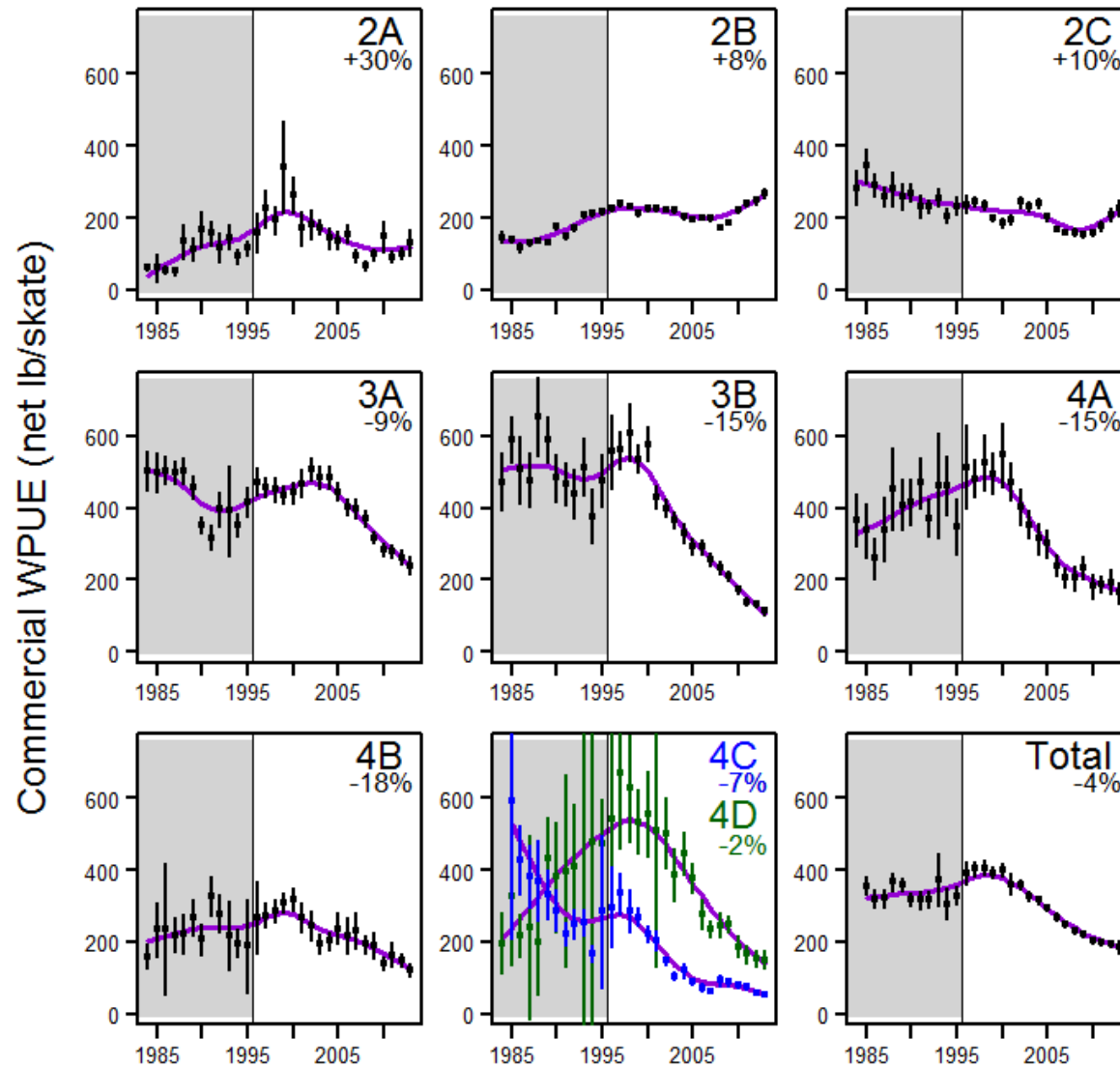
Halibut removals



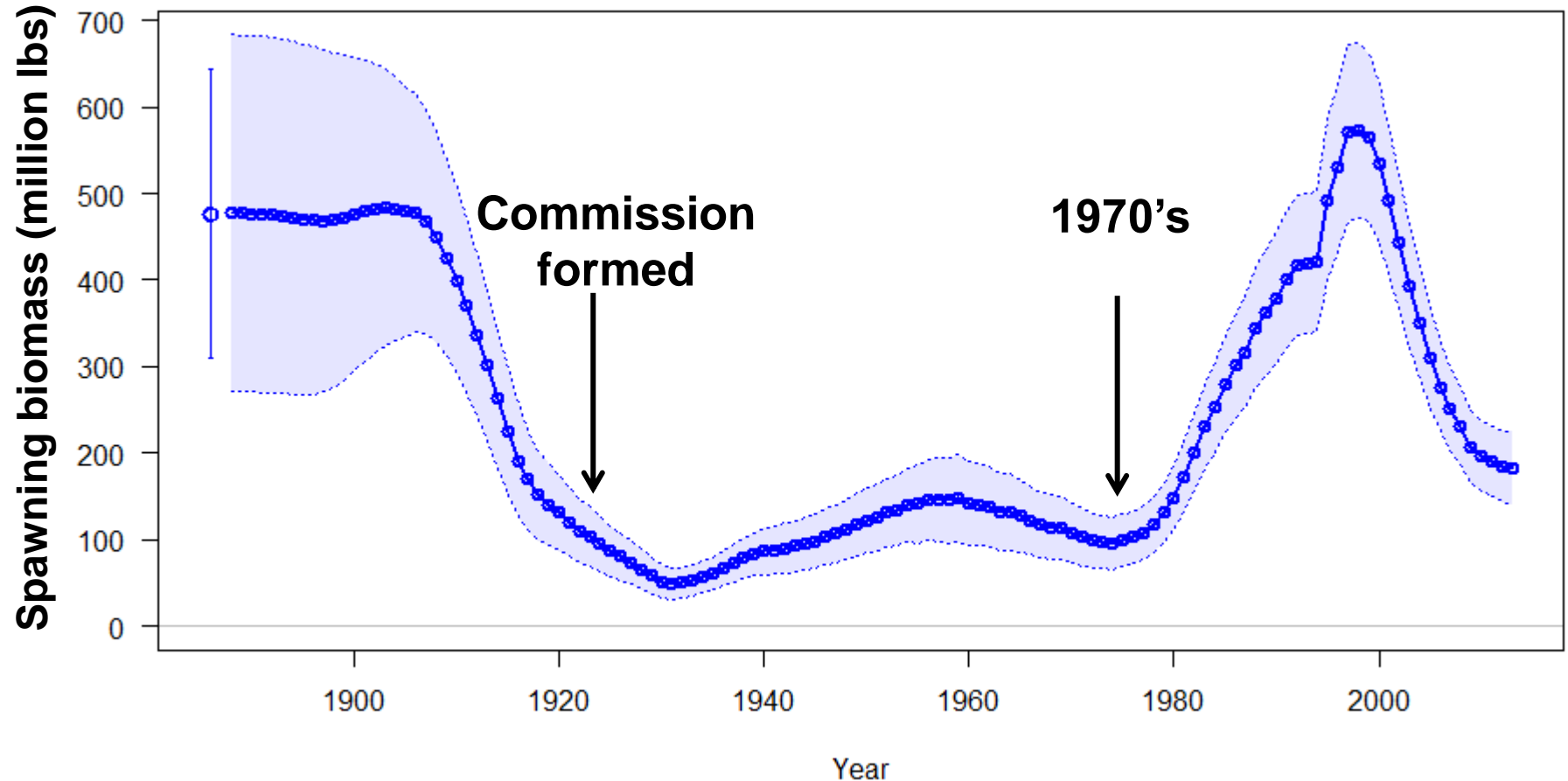
Survey trends – O32 WPUE



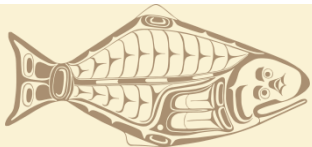
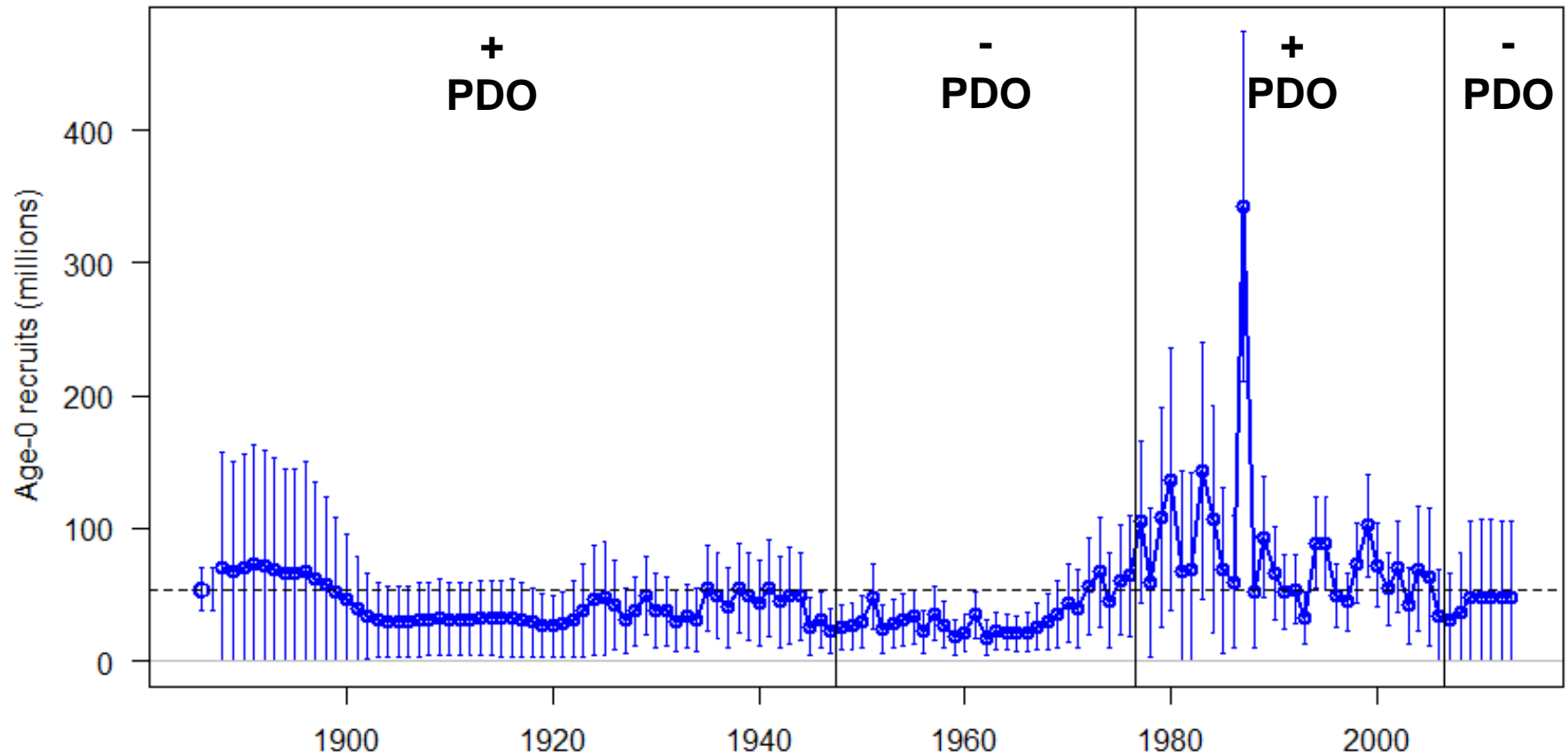
Fishery trends



Long time-series perspective

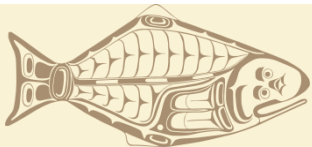


Recruitment trends



Comparison: Point estimates (million lbs)

Quantity	2012 Assessment model	2013 Ensemble
2014 Exploitable biomass	176	170
2014 Spawning biomass	198	197



Decision Table

- New advice process implemented for 2013
- Staff provides harvest advice
 - Application of IPHC harvest policy to the estimated biomass
 - The decision table presents a suite of potential choices and their estimated consequences.
 - The decision table is a framework to assist the Commission in its decision making and should not be interpreted as a specific recommendation



Decision table

2014 Alternative	Total removals (M lb)	Fishery CEY (M lb)	Harvest rate	Stock Trend				Stock Status				Fishery Trend				Fishery Status
				Spawning biomass				Spawning biomass				Fishery CEY from the harvest policy				Harvest rate
				In 2015		In 2017		In 2015		In 2017		In 2015		In 2017		In 2014
				Is less than 2014	Is 5% less than 2014	Is less than 2014	Is 5% less than 2014	Is less than 30%	Is less than 20%	Is less than 30%	Is less than 20%	Is less than 2014	Is 10% less than 2014	Is less than 2014	Is 10% less than 2014	Is above target
No removals	0.0	0.0	0.0%	5/100	<1/100	23/100	4/100	3/100	<1/100	1/100	<1/100	0/100	0/100	0/100	0/100	0/100
FCEY = 0	11.4	0.0	5.0%	31/100	<1/100	32/100	18/100	3/100	<1/100	2/100	<1/100	0/100	0/100	0/100	0/100	<1/100
	20.0	8.5	10.1%	33/100	<1/100	37/100	24/100	4/100	<1/100	3/100	<1/100	<1/100	<1/100	<1/100	<1/100	<1/100
	30.0	18.2	15.9%	39/100	<1/100	66/100	41/100	4/100	<1/100	5/100	<1/100	5/100	2/100	8/100	4/100	7/100
Blue Line	36.4	24.5	19.7%	56/100	1/100	82/100	63/100	5/100	<1/100	6/100	1/100	43/100	20/100	74/100	47/100	50/100
	40.0	28.0	21.8%	68/100	1/100	87/100	73/100	5/100	<1/100	8/100	1/100	85/100	52/100	96/100	84/100	92/100
	45.0	32.8	24.7%	82/100	4/100	93/100	83/100	6/100	1/100	10/100	1/100	>99/100	95/100	>99/100	99/100	>99/100
status quo	48.5	36.1	26.7%	88/100	8/100	95/100	87/100	6/100	1/100	13/100	1/100	>99/100	>99/100	>99/100	>99/100	>99/100
	55.0	42.6	30.5%	95/100	23/100	98/100	94/100	6/100	1/100	19/100	2/100	>99/100	>99/100	>99/100	>99/100	>99/100
	60.0	47.5	33.5%	98/100	38/100	99/100	97/100	7/100	1/100	26/100	2/100	>99/100	>99/100	>99/100	>99/100	>99/100
				a	b	c	d	e	f	g	h	i	j	k	l	m

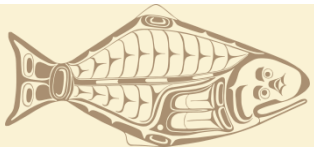
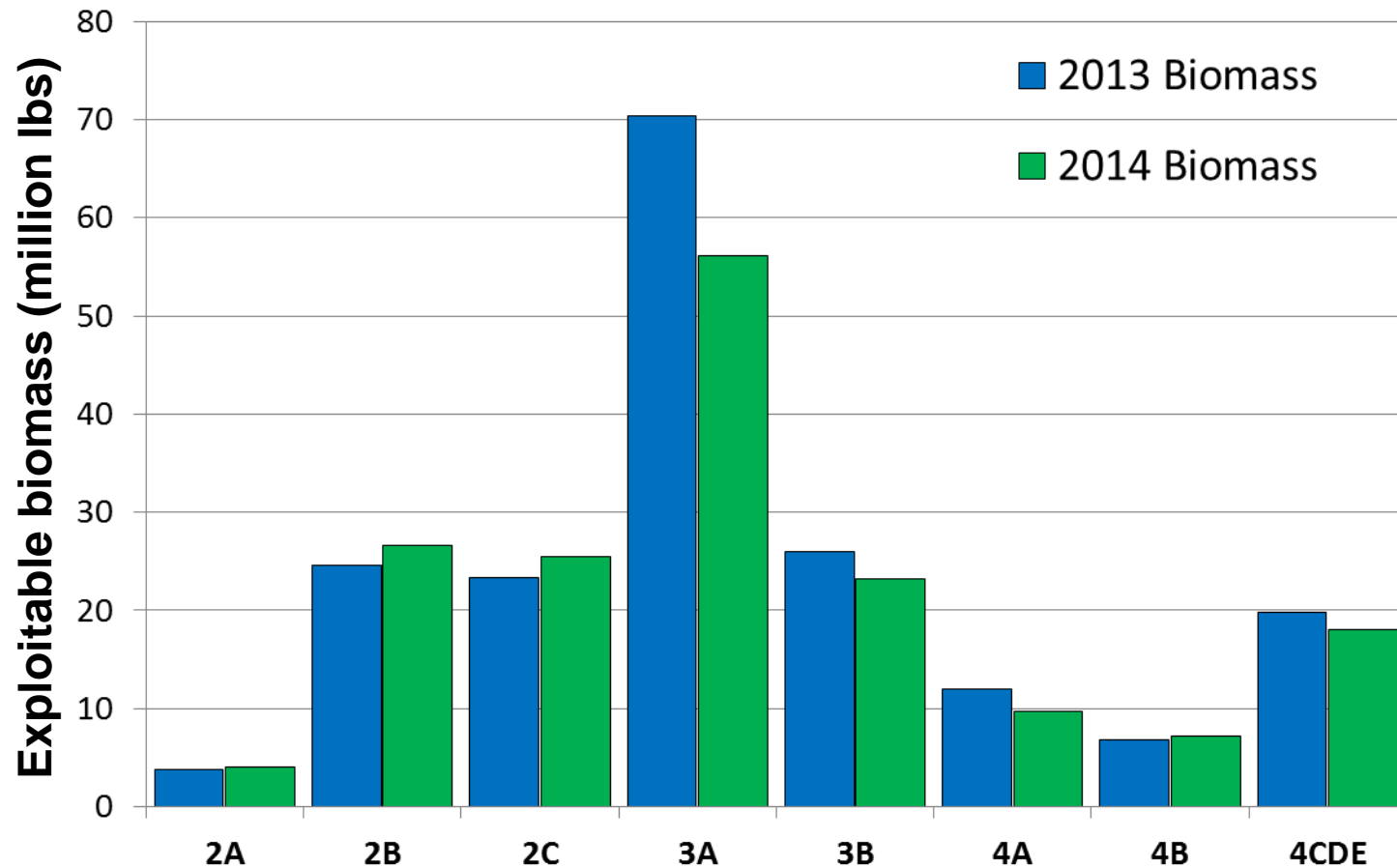


Assessment conclusions

- Historical information provides perspective on recent declines
- Incoming recruitments likely to be low
- Size-at-age changes slowly and is currently low
- As in 2012, the stock trend is projected to be relatively flat or declining in the near-term
- As the stock stabilizes at lower biomass levels, stock response to management actions may increase



Apportionment results - biomass



Apportionment results

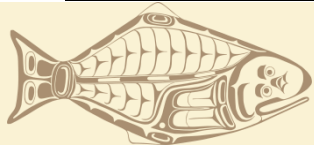
- Blue Line for 2014

	2A	2B	2C	3A	3B	4A	4B	4CDE	Total
Exploitable bio.	4.03	26.64	25.44	56.07	23.14	9.69	7.23	18.06	170.29
Percent of total	2.4%	15.6%	14.9%	32.9%	13.6%	5.7%	4.2%	10.6%	100.0%
Harvest rate	21.5%	21.5%	21.5%	21.5%	16.1%	16.1%	16.1%	16.1%	19.7%
TCEY	0.87	5.73	5.47	12.05	3.73	1.56	1.17	2.91	33.49
Other O26	0.14	0.74	1.31	2.63	0.90	0.71	0.34	2.27	9.04
FCEY	0.72	4.98	4.16*	9.43*	2.84	0.85	0.82	0.64	24.45

2C FCEY → 3.40 Mlbs comm fishery + 0.76 Mlbs guided rec.
 3A FCEY → 7.65 Mlbs comm fishery + 1.78 Mlbs guided rec.

- Adopted for 2013 (last year's final decision)

	2A	2B	2C	3A	3B	4A	4B	4CDE	Total
Exploitable bio.	3.81	24.54	23.28	70.38	26.02	11.97	6.75	19.74	186.49
Percent of total	2.0	13.2	12.5	37.7	14.0	6.4	3.6	10.6	100.0
Harvest rate	29.0%	31.7%	21.6%	24.2%	22.6%	20.3%	28.6%	21.7%	24.4%
TCEY	1.11	7.78	5.02	17.07	5.87	2.43	1.93	4.28	45.48
Other O26	0.11	0.73	2.05	6.04	1.58	1.10	0.48	2.35	14.45
FCEY	0.99	7.04	2.97	11.03	4.29	1.33	1.45	1.93	31.03



IPHC Assessment Briefing

- Thursday evening, shortly after the Council concludes for the day (approx. 5:30 pm)
- In the Council meeting room
- IPHC assessment scientist Dr. Ian Stewart
 - More in-depth assessment results
- IPHC Executive Director Dr. Bruce Leaman
 - Apportionment results
- Q&A



Bycatch Work Group

- An initiative which began in 2011 to review the status of bycatch, impacts to the stock and fishery yields, and recent actions taken to reduce bycatch
- Recent report contained a suite of options which could be used to reduce bycatch
- Public comment on options – Nov. 11-27
- Comment period reopened/extended to Dec. 17
- Further discussion at 2014 Annual Meeting



2014 Annual Meeting

- January 13-17, 2014
- Grand Hyatt Seattle in downtown Seattle
- Special meeting rates for rooms, available until December 23.
- All public and administrative sessions will be open. Open sessions will be webcasted.
- Further details on IPHC web site www.iphc.int

