

2013 Inshore Salmon Savings Incentive Plan Annual Report

Amendment 91 IPA Identification Number 1

By John Gruver

Inshore Salmon Savings Incentive Plan Representative

Submitted to the

North Pacific Fisheries Management Council

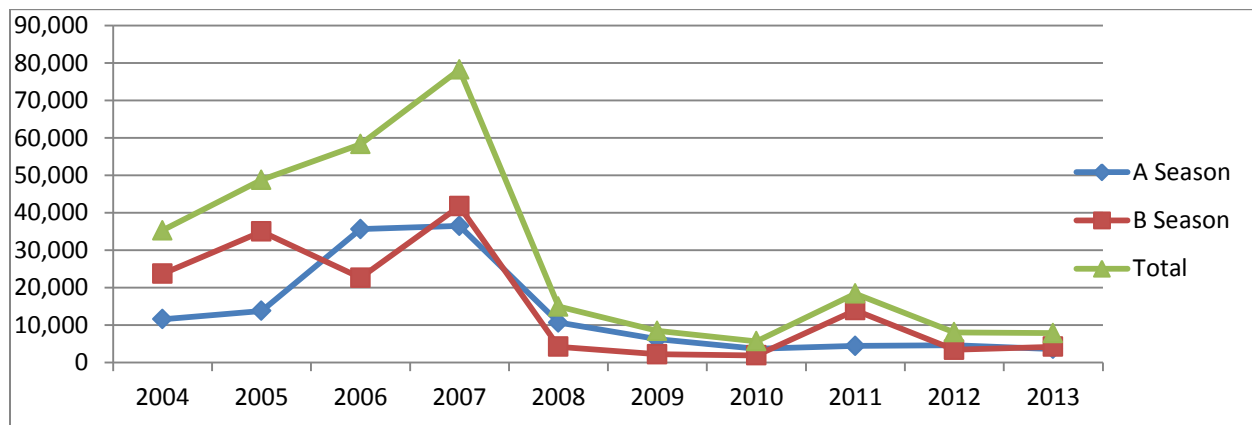
March 31, 2014

Introduction. For 2013 all AFA inshore catcher vessels were members of the Inshore Salmon Savings Incentive Plan (SSIP) Agreement. The Inshore SSIP was first submitted for approval by NMFS on September 30, 2010 and approved on November 5, 2010. An amended Inshore SSIP Agreement was submitted for approval on June 21, 2011. We received NMFS approval for the amended Agreement on June 28, 2011. The Inshore SSIP approved on June 28 continued in place for 2013.

2013 Pollock Harvest and Chinook Bycatch Summary. In 2013 the Inshore SSIP members caught a total of 7,876 Chinook salmon; 3,635 in the A Season and 4,241 in the B Season. The total 2013 pollock harvest by Inshore SSIP members was 549,043 metric; 218,848 in the A Season and 330,195 in the B Season. Annually that calculates to 70 metric tons of pollock harvest for every one bycaught Chinook salmon. Seasonally, The A Season pollock harvest was 60 metric tons of pollock for every one bycaught Chinook salmon. The B Season yielded 78 metric tons of pollock for every one bycaught Chinook salmon.

Putting these levels of bycatch in terms of numbers of fish, pollock and Chinook salmon, the A Season ratio was 87,890 pollock harvested for every one bycaught Chinook salmon and the B Season ratio was 156,970 pollock harvested for every one bycaught Chinook salmon. (Calculated using a 685 gram average pollock weight for the A Season and a 496 gram average pollock weight for the B Season – source: NMFS)

Compared to the most recent 10 years of inshore sector Chinook bycatch, 2013 was the second lowest on record. The inshore sector's 2013 Chinook bycatch of 7,876 salmon is 28% of the 10 year average (28,394 Chinook) – 20,518 Chinook below the 10 year average.



Annual Reporting Requirements.

Amendment 91 regulations require each Incentive Plan Agreement (IPA) representative to submit an annual report to the North Pacific Management Council. The annual report is required to address each of the topics found in the following Sections 1 through 6.

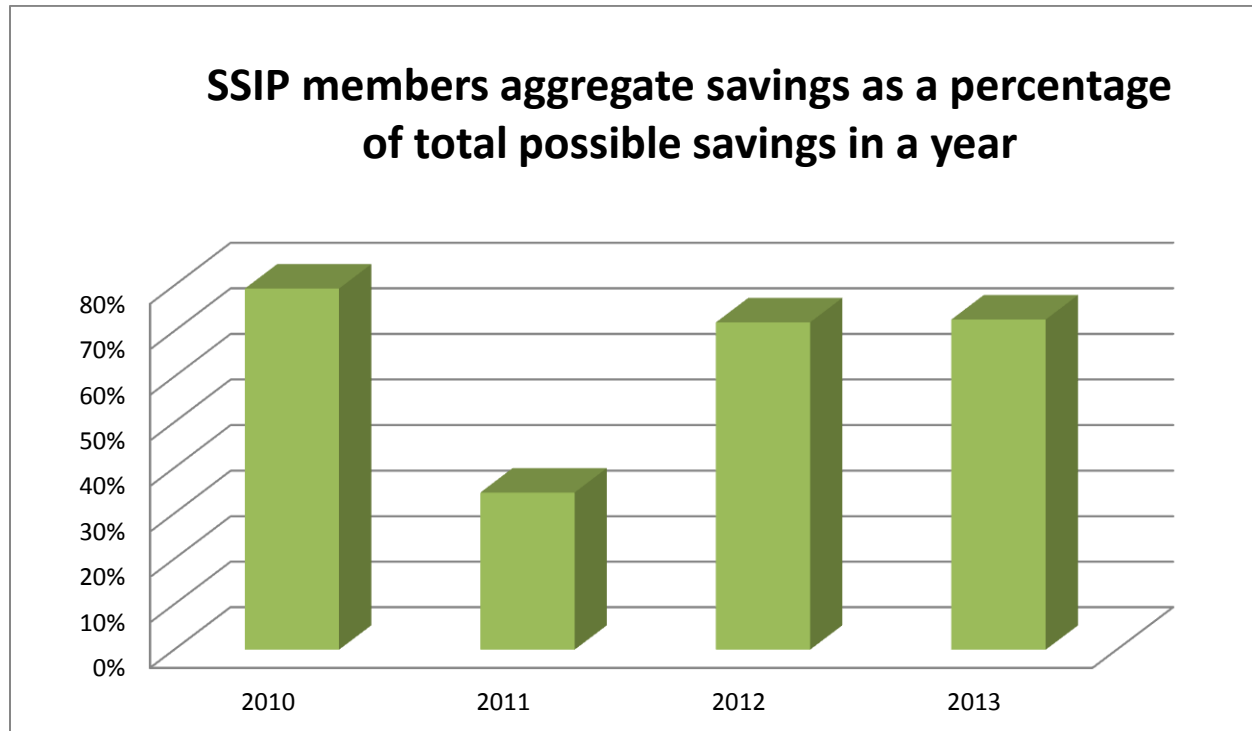
Section 1. A comprehensive description of the incentive measures in effect in the previous year.

Agreement Description. The following paragraph comes from page 5 of the Inshore Salmon Savings Incentive Plan Agreement and captures the main elements of the Incentive Plan Agreement (IPA).

Agreement Summary. The vessels participating in this IPA receive an annual allocation of Chinook salmon bycatch units, which limits their Chinook salmon PSC bycatch to their pro-rata share of the 47,591 Chinook salmon PSC performance standard, less Insurance Pool deductions for Inshore Cooperative Vessels. A vessel can earn additional Chinook bycatch units by catching fewer Chinook salmon PSC as bycatch than the amount of its annual allocation, at a rate of one (1) additional unit for every three (3) allocated units that are not used. The Insurance Pool is a Chinook bycatch unit reserve, which is available to Inshore Sector Cooperative Vessels whose Chinook bycatch exceeds the number of bycatch units they hold. Inshore Sector Cooperative Vessels using Insurance Pool bycatch units are required to repay the Insurance Pool, and to pay an additional Insurance Pool usage penalty. If the inshore sector's Chinook salmon bycatch exceeds its performance standard for two (2) years in a six (6) consecutive year period, each Cooperative is required to take all actions necessary to insure that the Chinook salmon bycatch of its Vessels does not exceed the Annual Threshold Amount for a third (3rd) year in a seven (7) consecutive year period. A rolling hot spot closure program closes areas of relatively high Chinook salmon PSC bycatch to vessels that have relatively high rates of Chinook salmon bycatch during periods when the vessels participating in this IPA are experiencing relatively low levels of Chinook salmon encounter.

Savings Credits. As described above, the primary incentive for members of the SSIP to minimize Chinook bycatch whenever possible is by earning additional Chinook bycatch units. These earned units are called Savings Credits. Each SSIP vessel is assigned an initial set of bycatch units called Base Cap Credits. Base Cap Credits are calculated as a vessel's share of the inshore sector's Chinook bycatch Performance Standard less an initial deduction for funding an Insurance Pool (26,484 minus 1,000 for Insurance Pool, leaving 25,484 for Base Cap Credit allocations). Each vessel's Base Cap allocation is made pro rata to the vessel's AFA inshore pollock history as found in Column D of Table 47c as published in the Amendment 91 Final Rule. On an annual basis, a vessel earns one Savings Credit for every 3 Base Cap credits not caught in that year. Without having earned Savings Credits, a vessel may never exceed its share of the Performance Standard (less the insurance pool reserve). In other words, a vessel may not utilize its share of the 33,390 inshore sector upper bycatch Chinook Limit without having earned Savings Credits. Therefore, without having earned Savings Credits, an Inshore SSIP vessel operates as if it were fishing under a hard cap at the 25,484 level.

Savings Credits, once earned, are not held in perpetuity, but rather have a lifespan of 5 years. Therefore SSIP vessels are not able to “rest on their laurels” after a series of low bycatch years. Because the nature of Chinook bycatch is so variable from one year to the next, vessels are driven to generate Savings Credits at all times.



Note: The SSIP proposed to the Council ahead of the final motion in April of 2009 included a Savings Credit lifespan of 3 years. However, once the Council included the 2 out of 7 year limitation on exceeding the Performance Standard for vessels in an IPA the SSIP, in order to keep the main incentive of the program in place (earning Savings Credits) the lifespan had to be extended to 5 years. Without the additional 2 years the SSIP may not have qualified as an Incentive Plan in all years. For example, if the inshore sector exceeded its Performance Standard 2 years in a row, and had continued with the 3 year life span, there would be no incentive by vessels to earn Savings Credits in either of the following 2 years.

Individual Vessel Allocations. IPAs are required to ensure that each vessel will manage their bycatch in a manner that will keep total bycatch below the sector Performance Standard. The Inshore SSIP accomplishes this requirement by 1) individual vessel allocations from a Base Cap pool that is lower than the inshore sector’s Performance Standard, and 2) vessels may only exceed their Base Cap allocation if they have earned Savings Credits. As previously stated, a vessel must have previously avoided 3 Chinook salmon under their Base Cap allocation to take one bycaught Chinook over their Base Cap allocation; assuring that at no time may an individual

vessel have taken a total average amount of Chinook bycatch in excess of the Performance Standard.

Transfers. Most transfer types defined in the SSIP cover situations that package together both pollock and salmon. These transfers are intended to allow coops to continue operations under the SSIP in a manner consistent with pollock transfers that took place prior to implementation of Amendment 91. Called Blended Paired Transfers and Trip Specific Transfers, these transfers combine pollock quota and Salmon Credits in a balanced fashion. The SSIP also provides transfers of pollock and salmon for very specific conditions pertaining to hardship situations and season completing “mop-up” fishing. While these very specific transfer situations do not require a balancing of pollock and salmon, their use is very limited.

The SSIP does provide for the transfer of Salmon Credits without an associated amount of pollock - called Base Cap Transfers – however, there are limitations. Transferors may transfer their initially assigned Base Cap Credits to another vessel and, in doing so, may restrict the use of their own Savings Credits in that year. (Savings Credits themselves are vessel specific assignments and are not transferable.) Transferees may have to acquire more Salmon Credits than they need for fishing to cover a Transfer Tax. Salmon Credits used to pay a Transfer Tax are retired from the program for the remainder of the year and therefore reduce the overall cap by the tax amount. The Base Cap Credit transfer Tax Table is found as Exhibit 1 of the SSIP Agreement. These transfer rules are designed to put pollock into the hands of cleaner fishing vessels; an incentive for vessels to keep their Chinook bycatch under the Performance Standard.

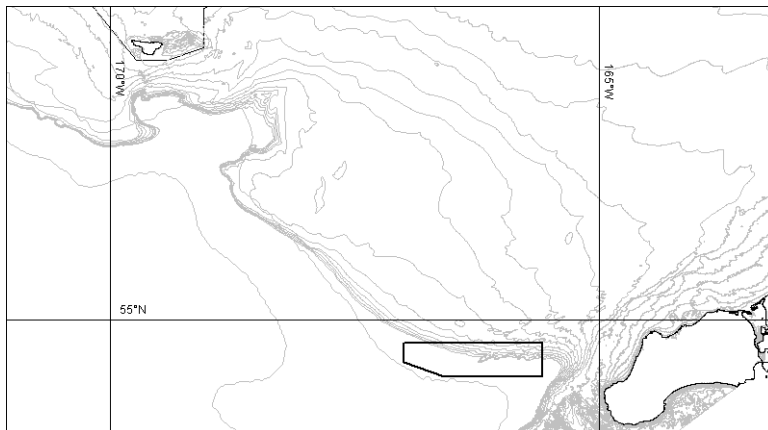
Inter-sector transfers, transfers from one pollock sector to the inshore sector, while allowed under the Amendment 91 regulations are not freely allowed under the SSIP rules. Inter-sector transfers may not be used in a way that puts the inshore sector in jeopardy of exceeding the inshore Performance Standard.

Insurance Pool. As both a protective measure and an incentive measure, the SSIP requires each member to contribute to a collective insurance pool. The pool is in place to buffer vessels that may exceed their available credit limit in each season against regulatory caps. To further incentivize vessels from using the insurance pool, and take precautionary steps towards not exceeding their salmon credit allocation, credit withdrawals from the insurance pool carry a “use penalty” ranging from 150% to 300% of the initial insurance pool draw (the rate applied is based on the precautions the vessel exhibited for the trip that triggered the overage).

Rolling Hot Spot (RHS) Program. The Inshore SSIP includes a rolling hot spot component similar to the Amendment 84 RHS program. While not a direct incentive based element, the addition of an RHS component to the SSIP provides a mechanism for minimizing bycatch during periods of low abundance when it may be difficult for a SSIP fisherman to otherwise make knowledgeable Chinook avoidance decisions.

Unlike the Amendment 84 program, the SSIP RHS program operates at the vessel level rather than at the coop level. Weekly each SSIP vessel assigned to either of two tier levels; Tier 1 vessels are exempt from the weekly closures and Tier 2 vessels are closed out for the entire week. The SSIP RHS program is suspended once SSIP Chinook bycatch exceeds 25% of the aggregate Base Cap Credits available for any given season. The 25% threshold was not reached in neither the 2013 A Season or in the 2013 B Season. Therefore, the SSIP RHS component was active for the entire year.

Chinook Conservation Area Agreement (CCAA). The SSIP requires members to be party to the Chinook Conservation Area Agreement. This area has been identified with a history of consistently high Chinook bycatch during the winter fishery. Located in the southeastern Bering Sea, the Agreement Chinook Conservation Area is closed to pollock fishing during the A season. The CCAA plays a major role in reducing Chinook bycatch in the A Season and while it may not be characterized as an incentive measure, its mandatory inclusion exemplifies the overall intent of the SSIP towards reducing Chinook bycatch.



Section 2. A description of how these incentive measures affected individual fishing vessels.

A vessel specific allocation of Chinook salmon provides a very strong incentive for individual vessels to reduce their bycatch. However, when a fisherman has progressed far enough into a low bycatch season that the hard cap is no longer a constraint, there is a fear that a vessel may let their bycatch reduction efforts relax. The SSIP rules provide little to no opportunity for a captain to relax by keeping the incentive strong at all levels of Chinook encounters. The SSIP provides continuous motivation to fishermen for the reduction of Chinook bycatch. Maintaining low bycatch throughout the course of a season is an opportunity to increase Savings Credits – the carrot at the end of the stick.

Without having earned Savings Credits a SSIP vessel is restricted to its share of the inshore Performance Standard (less the SSIP Insurance Pool deduction as described earlier). A SSIP

vessel that has maximized its available Savings Credits increases its annual limit by 26%. The possibility of obtaining, and maintaining, a 26% increase of available bycatch credits when most needed is very difficult to ignore – essentially an insurance policy. Vessel operators never know what the future holds in terms of Chinook encounters, therefore captains are constantly driven to stay below the Performance Standard. A retrospective of Chinook bycatch history in the Bering Sea pollock fishery show that high bycatch years are most likely come in groups, therefore no matter how high the presence of Chinook on the pollock grounds in one year, it could very easily be even higher the following year. This scenario is well recognized by the SSIP fleet and provides a strong incentive to 1) always earn the maximum amount of Savings Credits possible, and 2) avoid putting yourself in the situation of having to use Savings Credits whenever possible.

Additionally, along the lines of “insurance”, having earned Savings Credits not only gets a boat through the high bycatch years, maximizing Savings Credits is also a way to access more pollock quota beyond a vessel’s initial allocation. The SSIP not only inspires the reduction of Chinook bycatch, it promotes the possibility of additional pollock harvest by the fishermen that have managed their salmon credit allocations more frugally.

The SSIP rules cause its member vessels to be independently responsible for their future access to pollock by maintaining low Chinook bycatch. Consequently, each tow selection is made with considerations for both pollock harvest and Chinook avoidance in mind.

Another indicator for measuring how fishermen are altering their behavior is the steady increased use of salmon excluders. Despite the experimental nature of various devices being developed, vessels are buying and using excluders at a higher rate each year. In the 2010 A Season 56% of the SSIP fleet had purchased and were experimenting with their use. By 2013 that number had increased to 82%. The SSIP incentives play a key role for increasing salmon excluder use; shifting fishermen’s view of their gear from efficient pollock to harvest to a shared view of both pollock harvest and bycatch reduction.

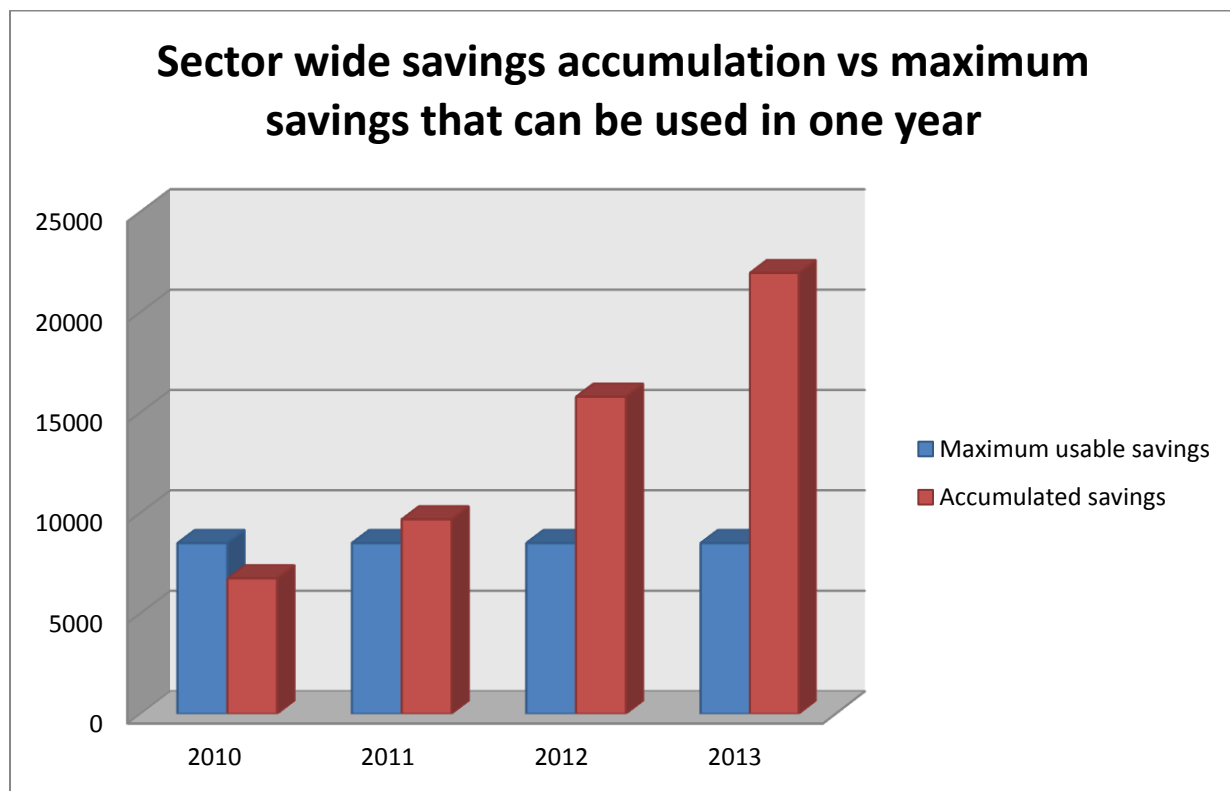
Section 3. An evaluation of whether incentive measures were effective in achieving salmon savings beyond levels that would have been achieved in absence of the measures.

As mentioned previously, allocating Chinook bycatch limits individually to each vessel coupled with earning Savings Credits provides a strong incentive to reduce Chinook bycatch at the vessel level regardless of the overall current bycatch level. If Amendment 91 had not included the Incentive Plan Agreement option, and focused only on a traditional hardcap mechanism at the 47,591 level, Chinook bycatch would undoubtedly be much higher late in the B Season than experienced in 2013. This would be true for any low encounter year, not just 2013.

The restrictive nature of the SSIP transfer rules exemplifies another difference of the benefits of an incentive based program over a standard hardcap situation as well. Transfer rules for a hard

cap regulatory approach would most likely have been written to move Chinook between vessels with little to no regard for the pollock side of the equation. The SSIP incentives are structured in a manner that prioritizes clean pollock fishing, transferring pollock to cleaner vessels. Without the incentive driven transfer rules, it is easy to assume individually assigned Chinook bycatch limits would have become a commodity being sought after by vessels with high bycatch. This would have resulted in significantly higher Chinook bycatch levels.

The vessel level incentive measures in the SSIP keep the vessel operators and managers constantly focused on Chinook bycatch amounts. And not just the number of Chinook caught, but the amount of Savings Credits earned as well. The incentive to earn Savings Credits is continuously strong regardless of maximum annual use limitations.



In addition to both earning and protecting previously earned Savings Credits, there is an underlying regulatory component to all Amendment 91 IPAs that has a strong influence on the effectiveness of the SSIP incentives verse a program that does not include these IPA measures. That regulatory component requires each pollock sector to stay under its share of the 47,591 Performance Standard in 3 out of 7 years. Upon a sector exceeding its Performance Standard the third time, the sector loses its IPA hard cap at the 60,000 level and must now operate under its share of a 47,591 had cap. That amounts to a 26% reduction for the inshore sector.

In response to this Performance Standard regulation IPAs must contain provisions preventing the IPA group from exceeding the Performance Standard 3 times in a 7 year period. Keeping in

mind that exceeding the Performance Standard by even a single fish qualifies as 1 of the 3 years, the inshore sector is very wary of exceeding the Performance Standard even once. The requirement to not exceed the Performance Standard in the majority of years coupled with the incentive to earn Savings Credits results in considerable Chinook bycatch reduction when compared to a traditional hard cap regulation that would allow fishing to occur up to the hard cap in every year.

Section 4. A description of any amendments in the terms of the IPA that were approved by NMFS since the last annual report and the reasons that the amendments to the IPA were made.

There were no amendments to the Inshore SSIP Agreement since the 2011 annual report.

Section 5. Seasonal Allocations and Harvests of Pollock and Chinook.

TABLE 1. A SEASON ALLOCATIONS AND CATCH					
COOP	VESSEL	2013 A SEASON ALLOCATIONS		2013 A SEASON CATCH	
		POLLOCK	CHINOOK CREDITS	POLLOCK	CHINOOK
A K U T A N C O O P	ALDEBARAN	7,105,210	307	8,149,430	53
	ARCTIC EXPLORER	7,868,507	340	8,252,283	122
	ARCTIC RAM	1,864,385	80	0	0
	ARCTURUS	7,487,586	323	7,346,066	60
	BLUE FOX	1,521,749	66	851,414	1
	BRISTOL EXPLORER	7,462,385	322	13,950,188	250
	CAPE KIWANDA	1,105,933	48	0	0
	COLUMBIA	6,992,775	302	6,830,158	46
	DOMINATOR	8,483,507	366	8,983,857	38
	EXCALIBUR II	2,520,094	109	2,446,470	3
	EXODUS	1,449,054	62	0	0
	GLADIATOR	7,952,834	343	7,423,343	13
	GOLDEN DAWN	8,496,592	367	8,350,996	7
	GOLDEN PISCES	1,311,418	57	0	0
	INTREPID EXPLORER	5,552,929	240	0	0
	LISA MELINDA	1,062,316	46	2,573,945	3
	MAJESTY	4,825,979	208	0	0
	MARCY J	871,855	38	0	0
	MARGARET LYN	165,260	7	2,656,166	10
	MARK I	219,054	9	0	0
	NORDIC EXPLORER	5,352,776	231	0	0
	NORTHERN PATRIOT	11,686,934	504	11,081,235	181
	NORTHWEST EXPLORER	1,156,820	50	7,519,849	63
	OCEAN EXPLORER	6,660,801	287	6,926,502	47
	PACIFIC EXPLORER	6,249,347	270	6,746,493	79
	PACIFIC RAM	986,229	43	2,318,593	2
	PACIFIC VIKING	5,286,865	228	4,760,475	80
	PEGASUS	3,368,202	145	4,496,138	35
	PEGGY JO	1,610,921	69	0	0
	PERSEVERANCE	1,431,607	62	1,537,735	7
	PREDATOR	953,758	41	2,376,184	4
	RAVEN	3,448,651	149	4,728,441	30
	ROYAL AMERICAN	4,699,974	203	4,750,728	37
	SEEKER	1,790,720	77	1,355,730	2
	SOVEREIGNTY	11,395,184	492	11,481,352	173
	TRAVELER	200,154	9	2,278,499	19
	VIKING EXPLORER	5,757,929	248	7,778,741	79

TABLE 1. (cont.) A SEASON ALLOCATIONS AND CATCH

COOP	VESSEL	2013 A SEASON ALLOCATIONS		2013 A SEASON CATCH	
		POLLOCK	CHINOOK CREDITS	POLLOCK	CHINOOK
K T H E R N V I C T O R	AMERICAN EAGLE	5,193,015	223	5,299,076	39
	ANITA J	2,642,952	105	4,877,258	66
	COLLIER BROTHERS	596,748	32	0	0
	COMMODORE	6,083,189	263	7,104,965	138
	GOLD RUSH	2,066,717	85	1,887,543	25
	HALF MOON BAY	2,635,259	123	0	0
	HICKORY WIND	1,480,555	64	1,692,660	29
	MISS BERDIE	2,913,737	128	3,336,954	62
	NORDIC FURY	349,458	4	3,416,922	12
	OCEAN HOPE 3	2,020,921	87	2,471,130	50
	PACIFIC FURY	280,021	2	0	0
	POSEIDON	5,962,508	260	6,955,735	34
	ROYAL ATLANTIC	6,335,130	274	6,048,439	26
	STORM PETREL	5,929,860	258	6,435,411	136
	SUNSET BAY	2,439,400	117	0	0
P E T E R P A N	AJ	3,396,473	146	0	0
	AMERICAN BEAUTY	178,164	9	1,657,630	5
	ELIZABETH F	1,866,305	80	1,850,402	9
	OCEAN LEADER	265,104	11	1,218,271	4
	OCEANIC	652,532	28	0	0
	PACIFIC CHALLENGER	814,770	35	638,330	0
	PROVIDIAN	1,849,744	80	0	0
	TOPAZ	400,923	17	0	0
U N A L A S K A	WALTER N	1,951,299	84	1,976,037	15
	ALASKA ROSE	8,158,803	352	9,502,539	67
	BERING ROSE	8,354,110	361	10,074,998	22
	DESTINATION	10,433,187	450	12,076,097	54
	GREAT PACIFIC	5,990,553	259	6,605,553	35
	LESLIE LEE	2,655,791	115	0	0
	MESSIAH	1,110,295	48	0	0
	MS AMY	2,365,980	102	0	0
	PROGRESS	4,903,520	212	4,132,478	206
	SEA WOLF	7,345,103	317	9,420,470	20
	VANGUARD	273,818	12	310,735	3
	WESTERN DAWN	1,915,271	83	931,465	7

TABLE 1. (cont.) A SEASON ALLOCATIONS AND CATCH					
COOP	VESSEL	2013 A SEASON ALLOCATIONS		2013 A SEASON CATCH	
		POLLOCK	CHINOOK CREDITS	POLLOCK	CHINOOK
U N I S E A	ALSEA	8,061,876	348	8,654,827	17
	ARGOSY	7,914,063	342	8,510,270	14
	AURIGA	15,014,426	648	16,232,020	50
	AURORA	15,018,788	648	16,265,813	43
	DEFENDER	16,875,903	728	19,476,026	47
	FIERCE ALLEGIANCE	4,544,407	196	5,662,766	55
	GUN-MAR	10,759,345	464	12,219,053	26
	MAR-GUN	505,473	22	0	0
	MORNING STAR	8,229,559	355	8,529,671	14
	MORNING STAR-2	2,563,711	111	0	0
	NORDIC STAR	4,896,251	211	5,396,308	30
	PACIFIC MONARCH	7,750,257	334	0	0
	SEADAWN	6,837,208	295	7,909,710	45
	STARFISH	7,324,749	316	7,017,668	44
	STARLITE	5,937,728	256	7,668,666	37
	STARWARD	6,111,711	264	6,059,958	30
W E S T W A R D	ALASKAN COMMAND	0	0	0	0
	ALYESKA	5,649,108	244	0	0
	ARCTIC WIND	5,938,582	256	2,759,756	22
	BERING DEFENDER	10,165,434	439	15,983,918	107
	CAITLIN ANN	4,710,278	203	7,998,932	119
	CHELSEA K	22,967,241	991	23,543,490	129
	PACIFIC KNIGHT	10,598,015	457	0	0
	PACIFIC PRINCE	11,916,779	514	15,421,037	174
	VIKING	8,278,432	357	10,339,762	52
	WESTWARD I	7,900,045	341	8,955,430	72

TABLE 2. B SEASON ALLOCATIONS AND CATCH

COOP	VESSEL	2013 B SEASON ALLOCATIONS				2013 B SEASON CATCH	
		POLLOCK	CHINOOK BASE CAP CREDITS (INCLUDES A SEASON	AVAILABL E SAVINGS CREDITS	TOTAL AVAILABL E CREDITS	POLLOCK	CHINOOK
A K U T A N C O O P	ALDEBARAN	10,698,217	320	102	422	8,022,437	159
	ARCTIC EXPLORER	11,847,504	296	113	409	13,068,153	294
	ARCTIC RAM	2,807,178	98	26	124	5,606,160	156
	ARCTURUS	11,273,955	327	107	434	13,553,588	194
	BLUE FOX	2,291,276	78	22	100	0	0
	BRISTOL EXPLORER	11,236,010	293	73	366	7,595,216	24
	CAPE KIWANDA	1,665,189	58	16	74	4,439,051	13
	COLUMBIA	10,528,925	321	100	421	7,816,747	80
	DOMINATOR	12,773,501	409	120	529	12,637,740	555
	EXCALIBUR II	3,794,470	130	36	166	4,745,665	6
	EXODUS	2,181,821	72	0	72	0	0
	GLADIATOR	11,974,472	406	113	519	12,567,958	273
	GOLDEN DAWN	12,793,202	439	122	561	13,440,904	90
	GOLDEN PISCES	1,974,584	61	19	80	6,007,536	11
	INTREPID EXPLORER	8,360,970	178	0	178	0	0
	LISA MELINDA	1,599,516	53	15	68	0	0
	MAJESTY	7,266,411	231	68	299	10,025,499	35
	MARCY J	1,312,741	43	12	55	1,165,869	2
	MARGARET LYN	248,830	9	2	11	2,982,366	41
	MARK I	329,827	4	3	7	0	0
	NORDIC EXPLORER	8,059,601	247	0	247	0	0
	NORTHERN PATRIOT	17,596,857	413	92	505	17,834,835	187
	NORTHWEST EXPLORER	1,741,808	44	17	61	0	0
	OCEAN EXPLORER	10,029,077	305	20	325	18,366,060	627
	PACIFIC EXPLORER	9,409,557	249	90	339	16,520,053	135
	PACIFIC RAM	1,484,951	52	14	66	0	0
	PACIFIC VIKING	7,960,361	197	75	272	12,507,636	221
	PEGASUS	5,071,456	146	48	194	0	0
	PEGGY JO	2,425,542	83	22	105	3,474,515	8
	PERSEVERANCE	2,155,551	68	21	89	0	0
	PREDATOR	1,436,061	47	14	61	2,041,382	4
	RAVEN	5,192,587	159	50	209	0	0
	ROYAL AMERICAN	7,076,688	211	67	278	10,155,015	37
	SEEKER	2,696,263	92	25	117	0	0
	SOVEREIGNTY	17,157,574	427	162	589	17,520,629	126
	TRAVELER	301,368	11	3	14	4,020,274	4
	VIKING EXPLORER	8,669,635	271	81	352	8,904,298	84

TABLE 2. (cont.) B SEASON ALLOCATIONS AND CATCH

COOP	VESSEL	2013 B SEASON ALLOCATIONS				2013 B SEASON CATCH	
		POLLOCK	CHINOOK BASE CAP CREDITS (INCLUDES A SEASON	AVAILABL E SAVINGS CREDITS	TOTAL AVAILABL E CREDITS	POLLOCK	CHINOOK
N O R T H E R N V I C T O R	AMERICAN EAGLE	7,819,052	233	73	306	8,172,477	107
	ANITA J	3,979,457	69	35	104	10,785,312	134
	COLLIER BROTHERS	898,515	39	10	49	1,406,332	3
	COMMODORE	9,159,375	186	86	272	11,333,771	146
	GOLD RUSH	3,111,828	78	28	106	5,715,445	6
	HALF MOON BAY	3,967,873	138	41	179	0	0
	HICKORY WIND	2,229,251	49	21	70	3,833,391	7
	MISS BERDIE	4,387,174	94	42	136	0	0
	NORDIC FURY	526,174	5	2	7	5,474,332	1
	OCEAN HOPE 3	3,042,874	58	28	86	4,612,316	6
	PACIFIC FURY	421,624	3	1	4	0	0
	POSEIDON	8,977,668	289	86	375	8,905,713	16
	ROYAL ATLANTIC	9,538,720	307	90	397	9,699,496	16
	STORM PETREL	8,928,509	182	85	267	7,822,684	75
	SUNSET BAY	3,672,971	133	39	172	0	0
P E T E R P A N	AJ	5,114,022	106	49	155	0	0
	AMERICAN BEAUTY	268,259	10	3	13	1,061,613	0
	ELIZABETH F	2,810,070	89	26	115	2,932,326	12
	OCEAN LEADER	399,163	13	4	17	0	0
	OCEANIC	982,509	33	9	42	0	0
	PACIFIC CHALLENGER	1,226,788	42	12	54	1,815,113	1
	PROVIDIAN	2,785,134	91	27	118	0	0
	TOPAZ	603,664	21	5	26	0	0
	WALTER N	2,938,044	88	27	115	2,868,677	9
U N A L A S K A	ALASKA ROSE	12,284,598	373	116	489	13,149,471	17
	BERING ROSE	12,578,669	417	120	537	12,964,874	7
	DESTINATION	15,709,107	506	149	655	15,981,639	3
	GREAT PACIFIC	9,019,894	280	86	366	8,506,655	11
	LESLIE LEE	3,998,788	139	38	177	5,968,139	9
	MESSIAH	1,671,756	36	16	52	0	0
	MS AMY	3,562,424	121	34	155	0	0
	PROGRESS	7,383,164	56	70	126	8,058,430	13
	SEA WOLF	11,059,422	369	105	474	11,806,172	4
	VANGUARD	412,284	11	4	15	658,700	1
	WESTERN DAWN	2,883,798	90	27	117	3,032,957	0

TABLE 2. (cont.) B SEASON ALLOCATIONS AND CATCH

COOP	VESSEL	2013 B SEASON ALLOCATIONS				2013 B SEASON CATCH	
		POLLOCK	CHINOOK BASE CAP CREDITS (INCLUDES A SEASON	AVAILABL E SAVINGS CREDITS	TOTAL AVAILABL E CREDITS	POLLOCK	CHINOOK
U N I S E A	ALSEA	12,138,656	424	114	538	13,117,793	10
	ARGOSY	11,916,096	416	114	530	12,992,284	4
	AURIGA	22,607,017	789	214	1,003	24,530,752	10
	AURORA	22,613,584	790	214	1,004	24,448,448	23
	DEFENDER	25,409,817	887	240	1,127	26,204,445	27
	FIERCE ALLEGIANCE	6,842,452	235	65	300	10,542,996	8
	GUN-MAR	16,200,199	566	153	719	18,205,655	25
	MAR-GUN	761,083	27	7	34	0	0
	MORNING STAR	12,391,135	419	117	536	13,080,225	5
	MORNING STAR-2	3,860,144	29	37	66	0	0
	NORDIC STAR	7,372,218	258	69	327	10,950,666	7
	PACIFIC MONARCH	11,669,455	181	0	181	0	0
	SEADAWN	10,294,690	317	97	414	14,121,496	19
	STARFISH	11,028,774	352	105	457	11,121,530	19
	STARLITE	8,940,356	308	85	393	9,087,975	16
	STARWARD	9,202,320	302	87	389	9,037,102	10
W E S T W A R D	ALASKAN COMMAND	4,539,051	35	0	35	0	0
	ALYESKA	9,037,561	272	94	366	0	0
	ARCTIC WIND	7,472,962	254	56	310	742,701	1
	BERING DEFENDER	15,400,942	471	145	616	27,584,633	11
	CAITLIN ANN	6,914,147	183	46	229	13,749,784	8
	CHELSEA K	33,535,393	1,074	305	1,379	38,668,230	35
	PACIFIC KNIGHT	15,922,178	461	0	461	0	0
	PACIFIC PRINCE	16,989,386	463	161	624	19,551,868	11
	VIKING	11,868,162	389	106	495	15,579,389	10
	WESTWARD I	11,001,275	345	94	439	13,052,004	12

Section 6. In-season Transfers of Pollock and Chinook.

TABLE 3. TRANSFERS AMOUNG ENTITIES

DATE	TRANSFEROR	TRANSFEE	CHINOOK	POLLOCK
	The Inshore SSIP Participants had no Entity Transfers in 2013			

TABLE 4. TRANSFERS AMONG COOP MEMBERS

DATE	TRANSFEROR	TRANSFeree	POLLOCK	CHINOOK
1/22/2013	MS AMY	SEA WOLF	276,845	3.00
1/22/2013	ALYESKA	NORDIC FURY	305,510	0.00
1/23/2013	MORNING STAR-2	STARLITE	62,725	7.00
1/24/2013	NORDIC EXPLORER	TRAVELER	189,581	1.00
1/24/2013	ALYESKA	NORDIC FURY	371,109	0.00
1/24/2013	PACIFIC MONARCH	ARGOSY	125,000	3.00
1/24/2013	PACIFIC MONARCH	DEFENDER	160,000	6.00
1/25/2013	MAR-GUN	GUN-MAR	166,807	0.00
1/25/2013	PACIFIC MONARCH	GUN-MAR	150,000	11.00
1/26/2013	PACIFIC MONARCH	AURIGA	130,000	9.00
1/26/2013	PACIFIC MONARCH	AURORA	170,000	5.00
1/27/2013	AJ	BRISTOL EXPLORER	897,965	1.00
1/27/2013	PACIFIC MONARCH	ALSEA	112,640	4.00
1/27/2013	PACIFIC MONARCH	ARGOSY	125,000	1.00
1/28/2013	ALYESKA	BERING DEFENDER	2,824,554	116.00
1/28/2013	PACIFIC KNIGHT	CAITLIN ANN	4,288,391	176.00
1/28/2013	PACIFIC KNIGHT	CHELSEA K	567,312	23.00
1/28/2013	PACIFIC KNIGHT	PACIFIC PRINCE	2,619,077	108.00
1/28/2013	PACIFIC KNIGHT	VIKING	2,028,555	83.00
1/28/2013	PACIFIC KNIGHT	WESTWARD I	1,094,680	45.00
1/28/2013	NORDIC EXPLORER	TRAVELER	250,981	13.00
1/28/2013	ALYESKA	NORDIC FURY	428,526	0.00
1/28/2013	PACIFIC MONARCH	DEFENDER	160,000	2.00
1/29/2013	OCEAN LEADER	AMERICAN BEAUTY	265,081	0.00
1/29/2013	PROVIDIAN	AMERICAN BEAUTY	142,559	0.00
1/30/2013	PACIFIC MONARCH	AURORA	170,000	2.00
1/31/2013	PACIFIC MONARCH	ALSEA	110,207	3.00
2/1/2013	INTREPID EXPLORER	NORTHWEST EXPLORER	375,912	1.00
2/1/2013	PACIFIC MONARCH	ARGOSY	125,000	2.00
2/2/2013	ALYESKA	NORDIC FURY	435,178	0.00
2/2/2013	PACIFIC MONARCH	DEFENDER	160,000	1.00
2/3/2013	PROVIDIAN	AMERICAN BEAUTY	383,463	1.00
2/3/2013	OCEANIC	AMERICAN BEAUTY	164,341	0.00
2/3/2013	PACIFIC MONARCH	AURIGA	130,000	1.00
2/4/2013	GOLDEN PISCES	RAVEN	1,311,418	54.00
2/4/2013	PACIFIC MONARCH	ALSEA	116,078	5.00
2/4/2013	PACIFIC MONARCH	AURORA	170,000	2.00
2/5/2013	PACIFIC MONARCH	ARGOSY	125,000	3.00
2/6/2013	ALYESKA	NORDIC FURY	438,560	0.00
2/6/2013	INTREPID EXPLORER	NORTHWEST EXPLORER	932,452	0.00
2/6/2013	PACIFIC MONARCH	DEFENDER	160,000	1.00
2/7/2013	PROVIDIAN	AMERICAN BEAUTY	366,826	2.00
2/7/2013	OCEANIC	AMERICAN BEAUTY	157,211	1.00
2/7/2013	PACIFIC MONARCH	ALSEA	75,000	1.00
2/7/2013	PACIFIC MONARCH	AURIGA	130,000	2.00
2/7/2013	PACIFIC MONARCH	AURORA	170,000	1.00
2/9/2013	PACIFIC MONARCH	DEFENDER	160,000	1.00
2/10/2013	ALYESKA	NORDIC FURY	375,037	4.00

TABLE 4. (cont.) TRANSFERS AMONG COOP MEMBERS				
DATE	TRANSFEROR	TRANSFEE	POLLOCK	CHINOOK
2/10/2013	MESSIAH	ALASKA ROSE	218,922	11.00
2/11/2013	INTREPID EXPLORER	NORTHWEST EXPLORER	917,288	0.00
2/11/2013	MESSIAH	DESTINATION	348,908	12.00
2/14/2013	ALYESKA	NORDIC FURY	220,240	8.00
2/15/2013	INTREPID EXPLORER	NORTHWEST EXPLORER	1,032,289	1.00
2/15/2013	PACIFIC MONARCH	AURIGA	130,000	1.00
2/16/2013	AJ	BRISTOL EXPLORER	896,602	1.00
2/16/2013	PACIFIC MONARCH	ALSEA	75,000	1.00
2/18/2013	PACIFIC MONARCH	AURIGA	130,000	1.00
2/21/2013	PACIFIC MONARCH	DEFENDER	160,000	1.00
2/22/2013	ALYESKA	NORDIC FURY	247,249	0.00
2/23/2013	PACIFIC MONARCH	AURIGA	130,000	2.00
2/23/2013	PACIFIC MONARCH	AURORA	170,000	4.00
2/24/2013	PACIFIC MONARCH	ALSEA	50,000	1.00
2/24/2013	PACIFIC MONARCH	ARGOSY	96,207	5.00
2/24/2013	PACIFIC MONARCH	NORDIC STAR	50,000	2.00
2/25/2013	MAR-GUN	GUN-MAR	338,666	0.00
2/26/2013	PACIFIC MONARCH	GUN-MAR	150,000	1.00
2/28/2013	PACIFIC MONARCH	ALSEA	54,026	2.00
3/3/2013	PACIFIC MONARCH	GUN-MAR	150,000	1.00
3/4/2013	PACIFIC MONARCH	AURORA	100,000	1.00
3/5/2013	PACIFIC FURY	NORDIC FURY	280,021	1.00
3/6/2013	MESSIAH	BERING ROSE	200,000	0.00
3/6/2013	MS AMY	SEA WOLF	500,000	0.00
3/7/2013	WESTERN DAWN	PROGRESS	0	4.00
3/7/2013	PACIFIC MONARCH	AURIGA	130,000	2.00
3/8/2013	PACIFIC MONARCH	NORDIC STAR	50,000	1.00
3/11/2013	WESTERN DAWN	BERING ROSE	790,000	0.00
3/12/2013	ARCTIC WIND	MORNING STAR	300,180	0.00
3/13/2013	MS AMY	ALASKA ROSE	1,150,000	0.00
3/13/2013	LESLIE LEE	SEA WOLF	600,000	0.00
3/13/2013	AJ	BRISTOL EXPLORER	679,003	3.00
3/13/2013	PACIFIC MONARCH	GUN-MAR	240,000	1.00
3/14/2013	MARK I	MARGARET LYN	172,634	5.00
3/14/2013	WESTERN DAWN	VANGUARD	36,917	0.00
3/14/2013	MS AMY	SEA WOLF	4,178	0.00
3/14/2013	LESLIE LEE	DESTINATION	1,000,000	0.00
3/14/2013	PACIFIC MONARCH	AURIGA	130,000	2.00
3/15/2013	MESSIAH	BERING ROSE	342,113	0.00
3/15/2013	MS AMY	BERING ROSE	434,957	0.00
3/15/2013	OCEANIC	OCEAN LEADER	113,324	0.00
3/15/2013	PROVIDIAN	OCEAN LEADER	264,422	0.00
3/15/2013	MORNING STAR-2	STARLITE	540,550	9.00
3/15/2013	PACIFIC MONARCH	NORDIC STAR	50,000	1.00
3/16/2013	WESTERN DAWN	SEA WOLF	156,889	0.00
3/16/2013	MESSIAH	BERING ROSE	352	0.00
3/16/2013	LESLIE LEE	SEA WOLF	200,000	0.00

TABLE 4. (cont.) TRANSFERS AMONG COOP MEMBERS				
DATE	TRANSFEROR	TRANSFeree	POLLOCK	CHINOOK
3/16/2013	PACIFIC MONARCH	DEFENDER	606,570	34.00
3/16/2013	MORNING STAR-2	STARWARD	7,165	8.00
3/17/2013	PACIFIC MONARCH	AURIGA	24,352	0.00
3/17/2013	PACIFIC MONARCH	GUN-MAR	4,555	0.00
3/17/2013	PACIFIC MONARCH	AURIGA	153,242	30.00
3/17/2013	BERING ROSE	SEA WOLF	18,330	0.00
3/17/2013	BERING ROSE	SEA WOLF	27,852	0.00
3/17/2013	BERING ROSE	SEA WOLF	352	0.00
3/17/2013	PROGRESS	SEA WOLF	265,735	0.00
3/17/2013	PACIFIC MONARCH	GUN-MAR	259,680	12.00
3/18/2013	PACIFIC MONARCH	AURORA	2,577	0.00
3/18/2013	PACIFIC MONARCH	AURORA	46,456	0.00
3/18/2013	SEADAWN	AURORA	9,173	0.00
3/18/2013	PACIFIC MONARCH	AURORA	238,819	28.00
3/18/2013	ALASKA ROSE	SEA WOLF	25,186	0.00
3/18/2013	PACIFIC MONARCH	NORDIC STAR	85,000	13.00
3/19/2013	MORNING STAR-2	STARLITE	573,644	12.00
3/19/2013	LESLIE LEE	DESTINATION	294,002	0.00
3/19/2013	LESLIE LEE	GREAT PACIFIC	561,789	0.00
3/19/2013	OCEANIC	OCEAN LEADER	127,115	0.00
3/19/2013	PROVIDIAN	OCEAN LEADER	296,603	1.00
3/19/2013	NORDIC EXPLORER	NORTHWEST EXPLORER	1,069,742	13.00
3/20/2013	HALF MOON BAY	ANITA J	1,000,000	46.00
3/20/2013	PROGRESS	GREAT PACIFIC	33,211	0.00
3/20/2013	PACIFIC MONARCH	DEFENDER	1,033,553	1.00
3/21/2013	PROGRESS	GREAT PACIFIC	20,000	0.00
3/21/2013	MARK I	MARGARET LYN	46,420	3.00
3/21/2013	NORDIC EXPLORER	MARGARET LYN	261,557	0.00
3/21/2013	ARCTIC WIND	BERING DEFENDER	1,476,038	9.00
3/21/2013	PACIFIC MONARCH	NORDIC STAR	85,000	2.00
3/22/2013	PROVIDIAN	OCEAN LEADER	344,322	2.00
3/22/2013	OCEANIC	OCEAN LEADER	72,485	1.00
3/22/2013	MORNING STAR-2	STARLITE	554,019	5.00
3/22/2013	MORNING STAR-2	FIERCE ALLEGIANCE	43,000	29.00
3/23/2013	PACIFIC MONARCH	NORDIC STAR	90,000	7.00
3/24/2013	MORNING STAR-2	FIERCE ALLEGIANCE	43,000	17.00
3/26/2013	SUNSET BAY	POSEIDON	516,775	3.00
3/26/2013	MORNING STAR-2	STARFISH	7,165	11.00
3/27/2013	INTREPID EXPLORER	NORTHWEST EXPLORER	955,599	30.00
3/27/2013	ARCTURUS	SOVEREIGNTY	86,168	1.00
3/27/2013	NORDIC EXPLORER	MARGARET LYN	272,783	0.00
3/27/2013	AJ	BRISTOL EXPLORER	922,903	66.00
3/27/2013	PROVIDIAN	BRISTOL EXPLORER	14,652	0.00
3/27/2013	PACIFIC MONARCH	NORDIC STAR	90,057	4.00
3/27/2013	MORNING STAR-2	STARWARD	7,165	3.00
3/28/2013	SUNSET BAY	COMMODORE	1,000,000	47.00
3/28/2013	ARCTIC WIND	BERING DEFENDER	1,548,764	16.00

TABLE 4. (cont.) TRANSFERS AMONG COOP MEMBERS				
DATE	TRANSFEROR	TRANSFEE	POLLOCK	CHINOOK
3/28/2013	BERING DEFENDER	CHELSEA K	8,937	0.00
3/28/2013	NORTHERN PATRIOT	SEADAWN	421,422	1.00
3/28/2013	PACIFIC MONARCH	SEADAWN	351	0.00
3/28/2013	MORNING STAR-2	FIERCE ALLEGIANCE	43,000	1.00
3/29/2013	HALF MOON BAY	ANITA J	1,000,000	46.00
3/29/2013	SUNSET BAY	POSEIDON	525,366	3.00
3/29/2013	INTREPID EXPLORER	ARCTIC EXPLORER	383,776	4.00
3/29/2013	WESTWARD I	VIKING	32,775	0.00
3/29/2013	CAITLIN ANN	ARCTIC WIND	146,156	0.00
3/31/2013	NORDIC EXPLORER	MARGARET LYN	288,539	0.00
3/31/2013	ARCTURUS	VIKING EXPLORER	55,352	6.00
3/31/2013	NORTHERN PATRIOT	VIKING EXPLORER	184,277	20.00
3/31/2013	MAJESTY	VIKING EXPLORER	130,873	14.00
3/31/2013	MORNING STAR-2	FIERCE ALLEGIANCE	43,000	3.00
4/1/2013	EXODUS	TRAVELER	425,047	0.00
4/2/2013	SEEKER	PREDATOR	447,680	18.00
4/2/2013	INTREPID EXPLORER	BRISTOL EXPLORER	755,915	77.00
4/2/2013	HALF MOON BAY	STORM PETREL	505,551	3.00
4/2/2013	MAJESTY	VIKING EXPLORER	606,291	2.00
4/3/2013	BLUE FOX	SEADAWN	659,902	1.00
4/3/2013	ALYESKA	PACIFIC PRINCE	3,145	0.00
4/3/2013	BERING DEFENDER	ALYESKA	7,503	99.30
4/3/2013	CAITLIN ANN	PACIFIC KNIGHT	473,108	119.57
4/3/2013	CHELSEA K	PACIFIC KNIGHT	0	20.40
4/3/2013	PACIFIC PRINCE	PACIFIC KNIGHT	0	77.04
4/3/2013	VIKING	PACIFIC KNIGHT	0	73.32
4/3/2013	WESTWARD I	PACIFIC KNIGHT	955	36.64
4/3/2013	ALYESKA	PACIFIC PRINCE	7,503	0.00
4/3/2013	BERING DEFENDER	PACIFIC PRINCE	14,432	0.00
4/3/2013	CAITLIN ANN	PACIFIC PRINCE	380,473	0.00
4/3/2013	PACIFIC KNIGHT	PACIFIC PRINCE	473,108	0.00
4/3/2013	PACIFIC KNIGHT	PACIFIC PRINCE	955	0.00
4/3/2013	WESTWARD I	PACIFIC PRINCE	5,565	0.00
4/4/2013	NORDIC EXPLORER	ROYAL AMERICAN	50,754	1.00
4/4/2013	MORNING STAR-2	FIERCE ALLEGIANCE	46,521	1.00
4/5/2013	NORDIC EXPLORER	MARGARET LYN	180,198	2.00
4/5/2013	MAJESTY	VIKING EXPLORER	459,704	4.00
4/6/2013	HALF MOON BAY	COMMODORE	21,776	0.00
4/7/2013	SUNSET BAY	ANITA J	234,306	0.00
4/7/2013	EXODUS	TRAVELER	399,117	2.00
4/7/2013	MAJESTY	ALDEBARAN	47,475	0.00
4/7/2013	SUNSET BAY	AMERICAN EAGLE	106,061	0.00
4/7/2013	STARFISH	FIERCE ALLEGIANCE	314,246	0.00
4/7/2013	MORNING STAR-2	FIERCE ALLEGIANCE	585,592	0.00
4/7/2013	MAJESTY	VIKING EXPLORER	584,315	1.00
4/8/2013	NORDIC EXPLORER	MARGARET LYN	356,393	0.00
4/8/2013	INTREPID EXPLORER	BRISTOL EXPLORER	199,698	0.00

TABLE 4. (cont.) TRANSFERS AMONG COOP MEMBERS				
DATE	TRANSFEROR	TRANSFeree	POLLOCK	CHINOOK
4/8/2013	CAPE KIWANDA	BRISTOL EXPLORER	542,537	0.00
4/9/2013	NORDIC FURY	PACIFIC FURY	19,650	1.00
4/9/2013	COLLIER BROTHERS	HICKORY WIND	200,000	0.00
4/9/2013	HALF MOON BAY	HICKORY WIND	12,105	0.00
4/9/2013	ROYAL ATLANTIC	OCEAN HOPE 3	19,650	0.00
4/9/2013	HALF MOON BAY	OCEAN HOPE 3	95,827	0.00
4/9/2013	SUNSET BAY	OCEAN HOPE 3	56,892	0.00
4/9/2013	NORDIC FURY	OCEAN HOPE 3	14,316	0.00
4/9/2013	PACIFIC FURY	OCEAN HOPE 3	19,650	0.00
4/9/2013	MAJESTY	ALDEBARAN	568,296	0.00
4/9/2013	ROYAL ATLANTIC	OCEAN HOPE 3	323	0.00
4/11/2013	CAPE KIWANDA	PACIFIC EXPLORER	497,340	0.00
4/11/2013	COLLIER BROTHERS	MISS BERDIE	396,748	21.00
4/11/2013	NORDIC EXPLORER	MARGARET LYN	316,895	0.00
4/11/2013	ROYAL ATLANTIC	OCEAN HOPE 3	243,551	1.00
4/11/2013	PACIFIC VIKING	PERSEVERANCE	23,981	0.00
4/12/2013	EXODUS	TRAVELER	418,881	1.00
4/12/2013	PEGGY JO	NORTHWEST EXPLORER	1,079,747	1.00
4/12/2013	PROVIDIAN	WALTER N	17,433	0.00
4/12/2013	OCEANIC	WALTER N	7,472	0.00
4/13/2013	ARCTIC RAM	PACIFIC RAM	158,974	0.00
4/13/2013	PEGGY JO	BRISTOL EXPLORER	531,174	1.00
4/13/2013	CAPE KIWANDA	BRISTOL EXPLORER	66,056	0.00
4/13/2013	NORDIC EXPLORER	BRISTOL EXPLORER	145,088	0.00
4/13/2013	NORDIC EXPLORER	BRISTOL EXPLORER	419	0.00
4/13/2013	ROYAL ATLANTIC	MISS BERDIE	26,469	0.00
4/13/2013	MAJESTY	LISA MELINDA	274,275	0.00
4/14/2013	MARCY J	PEGASUS	220,724	1.00
4/14/2013	MAJESTY	ALDEBARAN	428,449	0.00
4/14/2013	MAJESTY	DOMINATOR	500,350	1.00
4/15/2013	NORDIC EXPLORER	MARGARET LYN	229,368	0.00
4/15/2013	MAJESTY	LISA MELINDA	97,674	0.00
4/15/2013	POSEIDON	ROYAL ATLANTIC	3,302	0.00
4/16/2013	EXODUS	TRAVELER	206,009	1.00
4/16/2013	NORDIC EXPLORER	TRAVELER	188,729	1.00
4/16/2013	ARCTIC RAM	PACIFIC RAM	352,506	0.00
4/16/2013	MAJESTY	PREDATOR	187,524	1.00
4/17/2013	PACIFIC EXPLORER	NORDIC EXPLORER	194	0.00
4/17/2013	MARCY J	PEGASUS	306,167	1.00
4/17/2013	NORDIC EXPLORER	MARGARET LYN	366,119	0.00
4/17/2013	ARCTIC RAM	PACIFIC RAM	319,985	0.00
4/17/2013	MAJESTY	LISA MELINDA	299,615	0.00
4/17/2013	NORDIC EXPLORER	BRISTOL EXPLORER	835,305	1.00
4/17/2013	NORDIC EXPLORER	BRISTOL EXPLORER	486	0.00
4/18/2013	MAJESTY	PREDATOR	300,532	0.00
4/18/2013	MARCY J	PEGASUS	301,397	1.00
4/18/2013	MAJESTY	LISA MELINDA	298,607	0.00

TABLE 4. (cont.) TRANSFERS AMONG COOP MEMBERS				
DATE	TRANSFEROR	TRANSFeree	POLLOCK	CHINOOK
4/18/2013	NORDIC EXPLORER	OCEAN EXPLORER	265,701	2.00
4/19/2013	ARCTIC RAM	PREDATOR	284,916	0.00
4/19/2013	COLUMBIA	PERSEVERANCE	82,147	0.00
4/19/2013	PACIFIC VIKING	PACIFIC RAM	76,390	0.00
4/19/2013	MAJESTY	PACIFIC RAM	27,240	0.00
4/19/2013	RAVEN	PACIFIC RAM	22,914	0.00
4/19/2013	RAVEN	PACIFIC RAM	6,199	0.00
4/19/2013	RAVEN	PACIFIC RAM	1,780	0.00
4/19/2013	RAVEN	PACIFIC RAM	519	0.00
4/19/2013	RAVEN	PACIFIC RAM	153	0.00
4/19/2013	GOLDEN DAWN	PACIFIC RAM	157,357	1.00
4/19/2013	RAVEN	PACIFIC RAM	44	0.00
4/19/2013	RAVEN	PACIFIC RAM	13	0.00
4/19/2013	RAVEN	PACIFIC RAM	4	0.00
4/19/2013	RAVEN	PACIFIC RAM	1	0.00
4/19/2013	RAVEN	PACIFIC RAM	1	0.00
4/20/2013	ARCTIC RAM	LISA MELINDA	274,254	0.00
4/21/2013	ARCTIC RAM	PREDATOR	201,774	0.00
4/21/2013	ARCTIC RAM	LISA MELINDA	267,204	0.00
4/21/2013	BLUE FOX	SEEKER	10,433	0.00
4/21/2013	ARCTIC RAM	SEEKER	2,257	0.00
4/21/2013	COLUMBIA	PACIFIC RAM	80,470	1.00
4/21/2013	GLADIATOR	PACIFIC RAM	29,491	0.00
4/21/2013	NORDIC EXPLORER	PACIFIC RAM	83,370	0.00
4/21/2013	NORDIC EXPLORER	PACIFIC RAM	194	0.00
4/21/2013	MAJESTY	PACIFIC RAM	14,759	0.00
4/22/2013	MARCY J	PEGASUS	43,567	0.00
4/22/2013	EXCALIBUR II	PEGASUS	73,624	0.00
4/22/2013	ARCTIC RAM	PEGASUS	2,515	0.00
4/22/2013	NORDIC EXPLORER	PEGASUS	768	0.00
4/22/2013	GOLD RUSH	PEGASUS	179,174	1.00
6/9/2013	PACIFIC VIKING	GOLDEN DAWN	11,761	1.00
6/9/2013	ANITA J	HALF MOON BAY	0	41.69
6/9/2013	ANITA J	HALF MOON BAY	0	42.62
6/9/2013	COMMODORE	SUNSET BAY	0	43.96
6/9/2013	RAVEN	GOLDEN PISCES	0	45.73
6/9/2013	PACIFIC PRINCE	PACIFIC KNIGHT	0	13.24
6/9/2013	MISS BERDIE	COLLIER BROTHERS	0	21.00
6/9/2013	PREDATOR	SEEKER	0	18.00
6/10/2013	PROGRESS	WESTERN DAWN	0	4.00
6/10/2013	HICKORY WIND	COLLIER BROTHERS	200,000	0.00
6/10/2013	OCEAN HOPE 3	ROYAL ATLANTIC	263,524	0.00
6/10/2013	OCEAN HOPE 3	PACIFIC FURY	19,650	0.00
6/10/2013	OCEAN HOPE 3	NORDIC FURY	14,316	0.00
6/10/2013	MISS BERDIE	ROYAL ATLANTIC	26,469	0.00
6/10/2013	ROYAL ATLANTIC	POSEIDON	3,302	0.00
6/11/2013	SEA WOLF	LESLIE LEE	800,000	0.00

TABLE 4. (cont.) TRANSFERS AMONG COOP MEMBERS				
DATE	TRANSFEROR	TRANSFEE	POLLOCK	CHINOOK
6/11/2013	DESTINATION	LESLIE LEE	1,294,002	0.00
6/11/2013	GREAT PACIFIC	LESLIE LEE	561,789	0.00
6/11/2013	GREAT PACIFIC	PROGRESS	53,211	0.00
6/11/2013	SEA WOLF	PROGRESS	265,735	0.00
6/11/2013	AJ	CAPE KIWANDA	235,482	0.00
6/12/2013	NORDIC EXPLORER	TRAVELER	400,876	2.00
6/12/2013	MISS BERDIE	COLLIER BROTHERS	396,748	3.00
6/12/2013	ALYESKA	NORDIC FURY	427,796	0.00
6/12/2013	MORNING STAR-2	FIERCE ALLEGIANCE	100,000	2.00
6/13/2013	AJ	PEGGY JO	257,705	0.00
6/13/2013	PACIFIC MONARCH	GUN-MAR	100,000	1.00
6/14/2013	NORTHWEST EXPLORER	ARCTIC WIND	509,887	1.00
6/14/2013	MORNING STAR-2	STARWARD	5,000	1.00
6/15/2013	NORDIC EXPLORER	TRAVELER	96,813	0.00
6/15/2013	NORDIC EXPLORER	TRAVELER	300,230	0.00
6/15/2013	AJ	CAPE KIWANDA	224,029	2.00
6/16/2013	PACIFIC MONARCH	NORDIC STAR	50,045	0.00
6/17/2013	AJ	PEGGY JO	297,026	0.00
6/17/2013	ALYESKA	NORDIC FURY	395,921	0.00
6/18/2013	SEA WOLF	PROGRESS	265,735	0.00
6/18/2013	GREAT PACIFIC	PROGRESS	53,211	0.00
6/18/2013	LESLIE LEE	GREAT PACIFIC	561,789	0.00
6/18/2013	LESLIE LEE	DESTINATION	1,294,002	0.00
6/18/2013	LESLIE LEE	SEA WOLF	800,000	0.00
6/18/2013	PROGRESS	SEA WOLF	106,422	0.00
6/18/2013	PROGRESS	GREAT PACIFIC	106,422	0.00
6/18/2013	PROGRESS	SEA WOLF	425,048	0.00
6/19/2013	NORDIC EXPLORER	TRAVELER	143,355	1.00
6/20/2013	GREAT PACIFIC	LESLIE LEE	295,656	0.00
6/20/2013	GREAT PACIFIC	PROGRESS	319,400	0.00
6/20/2013	ALASKA ROSE	LESLIE LEE	377,288	0.00
6/20/2013	BERING ROSE	LESLIE LEE	339,814	0.00
6/20/2013	DESTINATION	LESLIE LEE	1,643,007	0.00
6/20/2013	PREDATOR	MAJESTY	488,056	10.00
6/20/2013	PREDATOR	MAJESTY	0	6.00
6/20/2013	PREDATOR	ARCTIC RAM	405,526	0.00
6/20/2013	PREDATOR	ARCTIC RAM	0	13.00
6/20/2013	PERSEVERANCE	ARCTIC RAM	81,164	2.00
6/20/2013	LISA MELINDA	ARCTIC RAM	541,458	12.00
6/20/2013	LISA MELINDA	ARCTIC RAM	0	6.00
6/20/2013	LISA MELINDA	MAJESTY	970,181	0.00
6/20/2013	LISA MELINDA	MAJESTY	0	32.00
6/20/2013	PACIFIC RAM	ARCTIC RAM	831,465	11.00
6/20/2013	PACIFIC RAM	ARCTIC RAM	0	18.00
6/20/2013	PACIFIC RAM	GOLDEN DAWN	157,357	0.00
6/20/2013	PACIFIC RAM	GOLDEN DAWN	0	5.00
6/20/2013	PEGASUS	ARCTIC RAM	2,515	0.00

TABLE 4. (cont.) TRANSFERS AMONG COOP MEMBERS				
DATE	TRANSFEROR	TRANSFeree	POLLOCK	CHINOOK
6/20/2013	PEGASUS	MARCY J	871,855	25.00
6/20/2013	PERSEVERANCE	COLUMBIA	82,147	2.00
6/20/2013	PERSEVERANCE	PACIFIC VIKING	23,981	0.00
6/20/2013	RAVEN	GOLDEN PISCES	1,803,200	39.00
6/20/2013	RAVEN	GOLDEN PISCES	0	16.00
6/20/2013	RAVEN	ARCTIC RAM	600,000	0.00
6/20/2013	RAVEN	ARCTIC RAM	0	18.00
6/20/2013	PEGASUS	GOLD RUSH	287,637	0.00
6/20/2013	AJ	CAPE KIWANDA	243,843	0.00
6/21/2013	RAVEN	BLUE FOX	1,300,000	0.00
6/21/2013	RAVEN	BLUE FOX	0	40.00
6/21/2013	AJ	PEGGY JO	282,935	0.00
6/21/2013	NORDIC EXPLORER	TRAVELER	379,568	0.00
6/22/2013	ALYESKA	NORDIC FURY	409,644	0.00
6/23/2013	OCEANIC	PACIFIC CHALLENGER	416,691	0.00
6/24/2013	NORDIC EXPLORER	TRAVELER	448,643	1.00
6/24/2013	AJ	CAPE KIWANDA	243,436	1.00
6/25/2013	BLUE FOX	SEADAWN	650,718	3.00
6/25/2013	AJ	PEGGY JO	348,541	3.00
6/25/2013	ALYESKA	NORDIC FURY	464,950	0.00
6/25/2013	MORNING STAR-2	STARWARD	0	1.00
6/25/2013	SEEKER	PREDATOR	235,711	0.00
6/25/2013	PREDATOR	SEEKER	5,423	0.00
6/25/2013	SEEKER	PREDATOR	5,423	0.00
6/26/2013	PERSEVERANCE	PREDATOR	1,960,020	12.00
6/26/2013	PERSEVERANCE	PREDATOR	0	50.00
6/26/2013	PEGASUS	ARCTIC RAM	450,000	13.00
6/27/2013	INTREPID EXPLORER	NORTHWEST EXPLORER	8,329,015	63.00
6/27/2013	INTREPID EXPLORER	NORTHWEST EXPLORER	0	114.00
6/27/2013	AJ	CAPE KIWANDA	234,743	1.00
6/27/2013	AJ	PEGGY JO	328,956	0.00
6/28/2013	NORDIC EXPLORER	TRAVELER	385,187	0.00
6/28/2013	BLUE FOX	SEADAWN	638,412	0.00
6/29/2013	AJ	CAPE KIWANDA	105,166	1.00
6/30/2013	ALYESKA	NORDIC FURY	422,423	0.00
6/30/2013	PACIFIC MONARCH	ALSEA	50,000	1.00
7/1/2013	NORDIC EXPLORER	TRAVELER	403,238	0.00
7/1/2013	BLUE FOX	SEADAWN	592,128	0.00
7/2/2013	AJ	CAPE KIWANDA	277,467	2.00
7/3/2013	PACIFIC MONARCH	AURIGA	130,000	1.00
7/4/2013	AJ	PEGGY JO	294,134	3.00
7/4/2013	ALYESKA	NORDIC FURY	427,141	0.00
7/5/2013	AJ	CAPE KIWANDA	257,823	0.00
7/5/2013	NORDIC EXPLORER	TRAVELER	386,195	0.00
7/6/2013	AJ	PEGGY JO	391,118	1.00
7/6/2013	OCEANIC	ELIZABETH F	133,107	0.00
7/6/2013	PACIFIC MONARCH	NORDIC STAR	100,000	1.00

TABLE 4. (cont.) TRANSFERS AMONG COOP MEMBERS				
DATE	TRANSFEROR	TRANSFeree	POLLOCK	CHINOOK
7/7/2013	AJ	CAPE KIWANDA	189,916	1.00
7/7/2013	PACIFIC MONARCH	AURORA	124,000	1.00
7/8/2013	ALYESKA	NORDIC FURY	413,273	0.00
7/9/2013	ELIZABETH F	OCEANIC	15,744	0.00
7/9/2013	NORDIC EXPLORER	TRAVELER	416,502	0.00
7/9/2013	BLUE FOX	SEADAWN	401,261	0.00
7/9/2013	RAVEN	SEADAWN	261,066	0.00
7/10/2013	BLUE FOX	RAVEN	1,300,000	0.00
7/10/2013	BLUE FOX	RAVEN	0	40.00
7/10/2013	AJ	PEGGY JO	325,309	0.00
7/10/2013	ALYESKA	NORDIC FURY	451,710	0.00
7/10/2013	MORNING STAR-2	STARWARD	5,000	1.00
7/11/2013	NORDIC EXPLORER	TRAVELER	359,451	0.00
7/11/2013	AJ	CAPE KIWANDA	267,763	0.00
7/12/2013	RAVEN	SEADAWN	603,449	0.00
7/12/2013	OCEAN LEADER	AMERICAN BEAUTY	285,456	0.00
7/13/2013	AJ	PEGGY JO	268,566	1.00
7/13/2013	PROVIDIAN	CAPE KIWANDA	250,492	0.00
7/14/2013	ALYESKA	NORDIC FURY	422,813	0.00
7/15/2013	SOVEREIGNTY	NORDIC STAR	179,052	0.00
7/16/2013	OCEAN LEADER	AMERICAN BEAUTY	112,166	0.00
7/16/2013	OCEANIC	AMERICAN BEAUTY	396,767	0.00
7/16/2013	ALYESKA	NORDIC FURY	211,992	0.00
7/17/2013	PEGASUS	GOLD RUSH	243,755	0.00
7/17/2013	AJ	PEGGY JO	20,316	0.00
7/17/2013	PROVIDIAN	PEGGY JO	279,325	0.00
7/17/2013	PROVIDIAN	CAPE KIWANDA	296,913	0.00
7/17/2013	STARLITE	FIERCE ALLEGIANCE	256,398	0.00
7/17/2013	STARWARD	FIERCE ALLEGIANCE	257,000	0.00
7/17/2013	PACIFIC MONARCH	ALSEA	100,000	1.00
7/18/2013	PEGASUS	EXCALIBUR II	147,248	1.00
7/18/2013	PEGASUS	EXCALIBUR II	0	3.00
7/18/2013	RAVEN	GOLDEN PISCES	605,027	0.00
7/18/2013	RAVEN	GOLDEN PISCES	0	45.00
7/18/2013	RAVEN	GOLDEN PISCES	864,411	0.00
7/18/2013	RAVEN	SEADAWN	435,589	0.00
7/18/2013	GLADIATOR	SEADAWN	248,223	0.00
7/19/2013	MISS BERDIE	ANITA J	481,598	2.00
7/20/2013	SEEKER	EXCALIBUR II	141,640	0.00
7/20/2013	PROVIDIAN	PEGGY JO	380,584	0.00
7/20/2013	ALYESKA	NORDIC FURY	440,975	0.00
7/21/2013	PEGASUS	GOLD RUSH	297,952	0.00
7/21/2013	PROVIDIAN	CAPE KIWANDA	220,659	0.00
7/21/2013	MORNING STAR-2	FIERCE ALLEGIANCE	888,519	0.00
7/22/2013	PACIFIC MONARCH	AURORA	124,000	1.00
7/23/2013	PACIFIC KNIGHT	CAITLIN ANN	633,924	0.00
7/24/2013	AURIGA	ARGOSY	24,352	0.00

TABLE 4. (cont.) TRANSFERS AMONG COOP MEMBERS				
DATE	TRANSFEROR	TRANSFEE	POLLOCK	CHINOOK
7/24/2013	AURORA	ALSEA	46,456	0.00
7/24/2013	AURORA	ARGOSY	2,577	0.00
7/24/2013	GUN-MAR	ARGOSY	4,555	0.00
7/24/2013	MISS BERDIE	ANITA J	375,807	0.00
7/24/2013	SEEKER	EXCALIBUR II	346,112	0.00
7/24/2013	PROVIDIAN	CAPE KIWANDA	264,529	0.00
7/26/2013	PROVIDIAN	CAPE KIWANDA	269,942	0.00
7/26/2013	MORNING STAR-2	FIERCE ALLEGIANCE	725,000	1.00
7/26/2013	MORNING STAR-2	FIERCE ALLEGIANCE	162,002	0.00
7/27/2013	PACIFIC KNIGHT	CAITLIN ANN	539,190	0.00
7/28/2013	SEEKER	EXCALIBUR II	330,697	0.00
7/28/2013	MISS BERDIE	HICKORY WIND	20,259	0.00
7/28/2013	MISS BERDIE	OCEAN HOPE 3	394,553	0.00
7/28/2013	PACIFIC MONARCH	AURORA	124,000	2.00
7/29/2013	SUNSET BAY	ANITA J	1,500,000	31.00
7/29/2013	SUNSET BAY	ANITA J	0	23.00
7/30/2013	PACIFIC FURY	NORDIC FURY	420,013	0.00
7/30/2013	PACIFIC FURY	NORDIC FURY	19,650	0.00
7/30/2013	PEGASUS	GOLD RUSH	283,034	0.00
7/30/2013	PACIFIC MONARCH	ARGOSY	100,000	1.00
7/31/2013	MORNING STAR-2	FIERCE ALLEGIANCE	737,000	1.00
8/1/2013	MISS BERDIE	HICKORY WIND	720,000	15.00
8/1/2013	MISS BERDIE	OCEAN HOPE 3	620,000	13.00
8/1/2013	NORTHWEST EXPLORER	NORDIC STAR	502,498	1.00
8/1/2013	SUNSET BAY	NORDIC FURY	7,552	0.00
8/1/2013	PACIFIC KNIGHT	CAITLIN ANN	680,554	1.00
8/2/2013	PACIFIC MONARCH	AURORA	124,000	6.00
8/2/2013	PACIFIC MONARCH	AURIGA	130,000	1.00
8/3/2013	PEGASUS	GOLD RUSH	350,261	0.00
8/3/2013	ARCTIC WIND	BERING DEFENDER	1,391,945	1.00
8/3/2013	PACIFIC MONARCH	GUN-MAR	100,000	2.00
8/3/2013	MORNING STAR-2	STARLITE	134,000	1.00
8/4/2013	MS AMY	VANGUARD	247,992	0.00
8/4/2013	MS AMY	WESTERN DAWN	160,181	0.00
8/4/2013	NORDIC EXPLORER	ROYAL AMERICAN	203,263	0.00
8/4/2013	NORTHWEST EXPLORER	PACIFIC EXPLORER	612,256	2.00
8/4/2013	PACIFIC KNIGHT	CAITLIN ANN	666,855	1.00
8/4/2013	PACIFIC MONARCH	ARGOSY	100,000	1.00
8/5/2013	PACIFIC MONARCH	ALSEA	250,000	1.00
8/5/2013	MORNING STAR-2	FIERCE ALLEGIANCE	574,935	4.00
8/5/2013	MORNING STAR-2	FIERCE ALLEGIANCE	104,559	0.00
8/6/2013	PEGASUS	GOLD RUSH	355,465	0.00
8/6/2013	PEGASUS	GOLD RUSH	0	1.00
8/6/2013	MISS BERDIE	HICKORY WIND	9,785	0.00
8/6/2013	NORTHWEST EXPLORER	INTREPID EXPLORER	8,329,015	63.00
8/6/2013	NORTHWEST EXPLORER	INTREPID EXPLORER	0	114.00
8/7/2013	NORTHWEST EXPLORER	PACIFIC EXPLORER	110,510	1.00

TABLE 4. (cont.) TRANSFERS AMONG COOP MEMBERS				
DATE	TRANSFEROR	TRANSFeree	POLLOCK	CHINOOK
8/7/2013	INTREPID EXPLORER	PACIFIC EXPLORER	750,000	0.00
8/7/2013	PACIFIC KNIGHT	CAITLIN ANN	654,700	0.00
8/7/2013	ARCTIC WIND	BERING DEFENDER	706,731	0.00
8/8/2013	SEEKER	GOLDEN PISCES	264,848	0.00
8/8/2013	MARK I	ROYAL AMERICAN	328,566	0.00
8/8/2013	NORDIC EXPLORER	ROYAL AMERICAN	142,279	4.00
8/9/2013	MORNING STAR-2	STARLITE	134,000	5.00
8/10/2013	MISS BERDIE	GOLD RUSH	65,221	0.00
8/10/2013	MISS BERDIE	OCEAN HOPE 3	215,826	0.00
8/10/2013	PEGASUS	GOLD RUSH	177,406	0.00
8/10/2013	PACIFIC KNIGHT	CAITLIN ANN	659,672	1.00
8/10/2013	PACIFIC MONARCH	ARGOSY	100,000	2.00
8/10/2013	MORNING STAR-2	STARWARD	5,000	3.00
8/10/2013	MORNING STAR-2	STARFISH	50,000	6.00
8/11/2013	SUNSET BAY	ANITA J	1,500,000	0.00
8/11/2013	SUNSET BAY	ANITA J	0	54.00
8/11/2013	SEEKER	GOLDEN PISCES	247,582	0.00
8/11/2013	INTREPID EXPLORER	PACIFIC EXPLORER	646,849	0.00
8/11/2013	MISS BERDIE	HICKORY WIND	354,044	1.00
8/11/2013	PACIFIC MONARCH	ALSEA	260,000	6.00
8/12/2013	SEEKER	PREDATOR	671,490	21.00
8/12/2013	SEEKER	PREDATOR	0	1.00
8/12/2013	NORDIC EXPLORER	ROYAL AMERICAN	527,695	1.00
8/12/2013	PACIFIC MONARCH	DEFENDER	198,000	4.00
8/12/2013	PACIFIC MONARCH	AURORA	124,000	1.00
8/13/2013	PEGASUS	GOLD RUSH	241,481	0.00
8/13/2013	NORDIC EXPLORER	MARGARET LYN	9,289	3.00
8/13/2013	PACIFIC MONARCH	AURIGA	103,000	1.00
8/13/2013	PACIFIC MONARCH	AURIGA	0	1.00
8/14/2013	HALF MOON BAY	OCEAN HOPE 3	481,598	0.00
8/14/2013	HALF MOON BAY	HICKORY WIND	375,807	0.00
8/14/2013	PACIFIC MONARCH	NORDIC STAR	440,578	4.00
8/14/2013	PACIFIC MONARCH	GUN-MAR	100,000	18.00
8/14/2013	PACIFIC MONARCH	NORDIC STAR	30,460	0.00
8/14/2013	ARCTIC WIND	BERING DEFENDER	1,435,355	6.00
8/15/2013	NORDIC EXPLORER	ROYAL AMERICAN	169,695	0.00
8/15/2013	SEEKER	GOLDEN PISCES	255,430	0.00
8/15/2013	SEEKER	GOLDEN PISCES	0	1.00
8/16/2013	INTREPID EXPLORER	PACIFIC EXPLORER	334,677	2.00
8/17/2013	PEGASUS	GOLD RUSH	197,564	0.00
8/17/2013	PEGASUS	GOLD RUSH	0	1.00
8/17/2013	NORDIC EXPLORER	MARGARET LYN	289,953	3.00
8/17/2013	PACIFIC MONARCH	ALSEA	273,231	1.00
8/18/2013	VANGUARD	MS AMY	1,557	0.00
8/18/2013	WESTERN DAWN	MS AMY	10,891	0.00
8/18/2013	INTREPID EXPLORER	OCEAN EXPLORER	0	1.00
8/18/2013	INTREPID EXPLORER	OCEAN EXPLORER	605,627	0.00

TABLE 4. (cont.) TRANSFERS AMONG COOP MEMBERS				
DATE	TRANSFEROR	TRANSFEE	POLLOCK	CHINOOK
8/19/2013	PACIFIC KNIGHT	VIKING	747,173	0.00
8/20/2013	MARK I	ROYAL AMERICAN	1,246	0.00
8/20/2013	NORDIC EXPLORER	ROYAL AMERICAN	189,320	0.00
8/20/2013	TRAVELER	MARGARET LYN	1,138	0.00
8/20/2013	NORDIC EXPLORER	MARGARET LYN	292,827	0.00
8/20/2013	INTREPID EXPLORER	PACIFIC EXPLORER	361,214	0.00
8/20/2013	PACIFIC MONARCH	NORDIC STAR	477,854	0.00
8/20/2013	PACIFIC MONARCH	GUN-MAR	199,556	0.00
8/20/2013	MAR-GUN	GUN-MAR	65,000	0.00
8/20/2013	ARCTIC WIND	BERING DEFENDER	1,509,928	0.00
8/21/2013	PEGASUS	GOLD RUSH	115,734	0.00
8/21/2013	MISS BERDIE	HICKORY WIND	324,346	0.00
8/22/2013	MESSIAH	SEA WOLF	769,087	0.00
8/22/2013	NORDIC EXPLORER	MARGARET LYN	276,588	5.00
8/22/2013	INTREPID EXPLORER	OCEAN EXPLORER	280,226	1.00
8/22/2013	MISS BERDIE	OCEAN HOPE 3	155,093	0.00
8/22/2013	PACIFIC KNIGHT	PACIFIC PRINCE	1,101,895	0.00
8/23/2013	SUNSET BAY	ANITA J	651,382	0.00
8/23/2013	SUNSET BAY	ANITA J	13,871	0.00
8/23/2013	NORDIC EXPLORER	ROYAL AMERICAN	428,904	3.00
8/23/2013	PACIFIC KNIGHT	CAITLIN ANN	413,496	0.00
8/24/2013	MESSIAH	BERING ROSE	726,589	0.00
8/24/2013	NORDIC EXPLORER	MARGARET LYN	303,557	1.00
8/24/2013	INTREPID EXPLORER	PACIFIC EXPLORER	663,709	2.00
8/24/2013	PACIFIC KNIGHT	VIKING	827,425	3.00
8/24/2013	PACIFIC MONARCH	DEFENDER	198,000	1.00
8/25/2013	MESSIAH	ALASKA ROSE	169,691	0.00
8/25/2013	MESSIAH	ALASKA ROSE	6,313	0.00
8/25/2013	MS AMY	ALASKA ROSE	583,088	0.00
8/25/2013	INTREPID EXPLORER	OCEAN EXPLORER	559,714	1.00
8/25/2013	MS AMY	DESTINATION	780,465	0.00
8/25/2013	ARCTIC WIND	BERING DEFENDER	1,483,831	0.00
8/26/2013	NORDIC EXPLORER	ROYAL AMERICAN	367,092	0.00
8/26/2013	PACIFIC MONARCH	NORDIC STAR	462,722	1.00
8/26/2013	PACIFIC MONARCH	GUN-MAR	1,190,133	3.00
8/26/2013	MORNING STAR-2	STARWARD	11,116	1.00
8/27/2013	NORDIC EXPLORER	MARGARET LYN	262,906	1.00
8/27/2013	INTREPID EXPLORER	PACIFIC EXPLORER	574,157	8.00
8/27/2013	GUN-MAR	ARGOSY	61,017	0.00
8/27/2013	GUN-MAR	ARGOSY	1,378	0.00
8/27/2013	PACIFIC MONARCH	ARGOSY	682,849	0.00
8/27/2013	PACIFIC KNIGHT	PACIFIC PRINCE	1,039,108	0.00
8/27/2013	PACIFIC KNIGHT	CAITLIN ANN	622,156	2.00
8/27/2013	MORNING STAR-2	STARLITE	136,442	1.00
8/28/2013	INTREPID EXPLORER	OCEAN EXPLORER	537,327	3.00
8/28/2013	MS AMY	DESTINATION	1,135,786	1.00
8/28/2013	PACIFIC KNIGHT	VIKING	583,059	0.00

TABLE 4. (cont.) TRANSFERS AMONG COOP MEMBERS				
DATE	TRANSFEROR	TRANSFEE	POLLOCK	CHINOOK
8/28/2013	MORNING STAR-2	STARFISH	43,256	1.00
8/28/2013	PACIFIC MONARCH	AURORA	124,000	5.00
8/29/2013	NORDIC EXPLORER	ROYAL AMERICAN	149,622	1.00
8/29/2013	MS AMY	ALASKA ROSE	483,626	1.00
8/29/2013	PACIFIC MONARCH	GUN-MAR	321,056	0.00
8/29/2013	MAR-GUN	GUN-MAR	0	1.00
8/29/2013	PACIFIC MONARCH	DEFENDER	198,000	9.00
8/30/2013	SEA WOLF	MS AMY	21,836	0.00
8/30/2013	MS AMY	GREAT PACIFIC	102,226	0.00
8/30/2013	PACIFIC MONARCH	AURIGA	103,000	0.00
8/30/2013	PACIFIC MONARCH	AURIGA	0	1.00
8/31/2013	PACIFIC MONARCH	NORDIC STAR	460,524	0.00
8/31/2013	NORDIC EXPLORER	MARGARET LYN	249,953	2.00
8/31/2013	ALYESKA	BERING DEFENDER	1,440,807	0.00
9/1/2013	MAR-GUN	GUN-MAR	693,175	0.00
9/1/2013	MAR-GUN	GUN-MAR	2,874	0.00
9/1/2013	GUN-MAR	PACIFIC MONARCH	2,605	0.00
9/1/2013	GUN-MAR	PACIFIC MONARCH	567,888	0.00
9/1/2013	HALF MOON BAY	ANITA J	1,000,000	32.00
9/1/2013	HALF MOON BAY	ANITA J	0	2.00
9/1/2013	INTREPID EXPLORER	OCEAN EXPLORER	512,143	31.00
9/1/2013	INTREPID EXPLORER	PACIFIC EXPLORER	397,659	8.00
9/1/2013	PACIFIC PRINCE	VIKING	164,248	0.00
9/1/2013	PACIFIC PRINCE	WESTWARD I	329,736	0.00
9/1/2013	ALASKAN COMMAND	CHELSEA K	1,812,954	0.00
9/1/2013	ALASKAN COMMAND	CAITLIN ANN	622,496	0.00
9/2/2013	NORDIC EXPLORER	ROYAL AMERICAN	222,718	5.00
9/2/2013	NORDIC EXPLORER	MARGARET LYN	31,901	2.00
9/2/2013	PACIFIC KNIGHT	CAITLIN ANN	621,328	1.00
9/3/2013	PACIFIC KNIGHT	VIKING	689,363	0.00
9/4/2013	PACIFIC KNIGHT	PACIFIC PRINCE	984,506	2.00
9/5/2013	NORDIC EXPLORER	MARGARET LYN	191,178	6.00
9/5/2013	NORDIC EXPLORER	MARGARET LYN	30,438	0.00
9/5/2013	EXODUS	MARGARET LYN	103,553	0.00
9/5/2013	INTREPID EXPLORER	OCEAN EXPLORER	306,788	5.00
9/5/2013	HALF MOON BAY	COMMODORE	419,168	0.00
9/5/2013	HALF MOON BAY	COMMODORE	0	92.00
9/5/2013	PACIFIC KNIGHT	WESTWARD I	532,175	0.00
9/5/2013	ALASKAN COMMAND	CHELSEA K	251,778	0.00
9/5/2013	ALASKAN COMMAND	CHELSEA K	10,301	0.00
9/5/2013	PACIFIC MONARCH	AURIGA	103,000	0.00
9/5/2013	PACIFIC MONARCH	AURIGA	0	1.00
9/6/2013	EXODUS	ROYAL AMERICAN	348,248	2.00
9/6/2013	EXODUS	ROYAL AMERICAN	0	14.00
9/6/2013	GOLDEN PISCES	PACIFIC VIKING	7,457	0.00
9/6/2013	SEEKER	PACIFIC VIKING	154,225	0.00
9/6/2013	SEEKER	PACIFIC VIKING	0	3.00

TABLE 4. (cont.) TRANSFERS AMONG COOP MEMBERS				
DATE	TRANSFEROR	TRANSFeree	POLLOCK	CHINOOK
9/7/2013	EXODUS	MARGARET LYN	323,672	15.00
9/7/2013	ALYESKA	BERING DEFENDER	1,497,348	0.00
9/8/2013	INTREPID EXPLORER	PACIFIC EXPLORER	716,338	2.00
9/8/2013	INTREPID EXPLORER	PACIFIC EXPLORER	0	56.00
9/9/2013	EXODUS	MARGARET LYN	278,081	0.00
9/9/2013	EXODUS	MARGARET LYN	0	1.00
9/9/2013	INTREPID EXPLORER	OCEAN EXPLORER	677,527	0.00
9/9/2013	ARCTIC WIND	BERING DEFENDER	681,557	0.00
9/9/2013	ARCTIC WIND	BERING DEFENDER	30,436	0.00
9/9/2013	ALYESKA	BERING DEFENDER	1,577,039	0.00
9/9/2013	ALYESKA	BERING DEFENDER	33,329	0.00
9/10/2013	PACIFIC KNIGHT	CHELSEA K	1,217,945	0.00
9/11/2013	EXODUS	MARGARET LYN	88,513	0.00
9/11/2013	EXODUS	MARGARET LYN	0	2.00
9/11/2013	INTREPID EXPLORER	PACIFIC EXPLORER	405,060	0.00
9/11/2013	INTREPID EXPLORER	PACIFIC EXPLORER	13,564	0.00
9/11/2013	HALF MOON BAY	COMMODORE	411,293	0.00
9/11/2013	PACIFIC MONARCH	MORNING STAR	300,000	0.00
9/11/2013	PACIFIC MONARCH	AURORA	130,000	3.00
9/11/2013	PACIFIC MONARCH	AURORA	50,000	0.00
9/11/2013	PACIFIC MONARCH	AURORA	0	2.00
9/12/2013	PACIFIC MONARCH	NORDIC STAR	450,316	0.00
9/12/2013	PACIFIC MONARCH	NORDIC STAR	34,033	0.00
9/13/2013	ALASKAN COMMAND	CHELSEA K	1,841,398	5.00
9/13/2013	PACIFIC MONARCH	AURIGA	103,000	0.00
9/13/2013	PACIFIC MONARCH	AURIGA	0	3.00
9/14/2013	BLUE FOX	PACIFIC VIKING	8,653	0.00
9/14/2013	SEEKER	PACIFIC VIKING	273,934	0.00
9/14/2013	SEEKER	PACIFIC VIKING	10,183	0.00
9/14/2013	PERSEVERANCE	PACIFIC VIKING	8,141	0.00
9/14/2013	PREDATOR	PERSEVERANCE	696,763	11.84
9/14/2013	PREDATOR	PERSEVERANCE	0	49.35
9/14/2013	EXODUS	OCEAN EXPLORER	635,698	0.00
9/14/2013	PERSEVERANCE	PACIFIC VIKING	239,785	0.00
9/14/2013	PACIFIC KNIGHT	CAITLIN ANN	721,583	0.00
9/14/2013	PACIFIC KNIGHT	WESTWARD I	672,102	0.00
9/15/2013	HALF MOON BAY	ANITA J	500,000	0.00
9/15/2013	HALF MOON BAY	ANITA J	0	6.00
9/15/2013	PACIFIC PRINCE	BERING DEFENDER	32,001	0.00
9/15/2013	PACIFIC PRINCE	BERING DEFENDER	31,890	0.00
9/15/2013	PACIFIC KNIGHT	VIKING	700,508	0.00
9/16/2013	BRISTOL EXPLORER	PACIFIC EXPLORER	638,764	0.00
9/16/2013	STORM PETREL	COMMODORE	446,498	0.00
9/16/2013	PACIFIC MONARCH	MORNING STAR	389,584	0.00
9/16/2013	PACIFIC MONARCH	DEFENDER	201,780	10.00
9/17/2013	FIERCE ALLEGIANCE	MORNING STAR-2	78,718	0.00
9/17/2013	FIERCE ALLEGIANCE	MORNING STAR-2	25,841	0.00

TABLE 4. (cont.) TRANSFERS AMONG COOP MEMBERS				
DATE	TRANSFEROR	TRANSFEE	POLLOCK	CHINOOK
9/17/2013	SEADAWN	NORDIC STAR	3,531	0.00
9/17/2013	SEADAWN	NORDIC STAR	42	0.00
9/17/2013	PERSEVERANCE	PACIFIC VIKING	456,978	0.00
9/17/2013	PEGASUS	PACIFIC VIKING	82,703	0.00
9/17/2013	PACIFIC MONARCH	AURORA	115,710	0.00
9/18/2013	STARLITE	MORNING STAR-2	20	0.00
9/18/2013	HALF MOON BAY	ANITA J	486,134	0.00
9/18/2013	HALF MOON BAY	ANITA J	0	6.00
9/18/2013	BRISTOL EXPLORER	OCEAN EXPLORER	657,258	0.00
9/18/2013	PACIFIC MONARCH	NORDIC STAR	387,127	0.00
9/18/2013	PACIFIC MONARCH	AURIGA	46,292	0.00
9/18/2013	PACIFIC MONARCH	BERING DEFENDER	202,190	0.00
9/18/2013	MORNING STAR-2	AURIGA	29,562	0.00
9/18/2013	MORNING STAR-2	AURIGA	7,165	0.00
9/18/2013	MORNING STAR-2	AURIGA	14,578	0.00
9/18/2013	MORNING STAR-2	AURIGA	5,371	0.00
9/19/2013	PREDATOR	SEEKER	0	1.00
9/19/2013	PREDATOR	SEEKER	671,490	21.00
9/19/2013	PACIFIC KNIGHT	WESTWARD I	517,231	0.00
9/21/2013	MISS BERDIE	COMMODORE	210,658	0.00
9/21/2013	MISS BERDIE	COMMODORE	16,568	0.00
9/21/2013	HALF MOON BAY	COMMODORE	227,226	0.00
9/21/2013	ROYAL ATLANTIC	AMERICAN EAGLE	119,063	0.00
9/21/2013	ROYAL ATLANTIC	AMERICAN EAGLE	3,303	0.00
9/21/2013	ROYAL ATLANTIC	AMERICAN EAGLE	332	0.00
9/21/2013	ROYAL ATLANTIC	AMERICAN EAGLE	2,785	0.00
9/21/2013	SEEKER	MAJESTY	172,253	0.00
9/21/2013	SEEKER	PACIFIC VIKING	232,765	0.00
9/21/2013	PEGGY JO	OCEAN EXPLORER	299,789	0.00
9/21/2013	PEGGY JO	PACIFIC EXPLORER	424,281	0.00
9/21/2013	HALF MOON BAY	COMMODORE	51,482	0.00
9/21/2013	HALF MOON BAY	COMMODORE	14,985	0.00
9/22/2013	BRISTOL EXPLORER	ARCTIC EXPLORER	70,881	0.00
9/23/2013	PACIFIC MONARCH	AURORA	845,212	0.00
9/23/2013	PACIFIC MONARCH	AURORA	0	1.00
9/23/2013	PACIFIC MONARCH	AURIGA	513,604	0.00
9/23/2013	PACIFIC MONARCH	AURIGA	50,887	1.00
9/23/2013	PACIFIC MONARCH	AURIGA	44,070	0.00
9/23/2013	PACIFIC MONARCH	AURIGA	2,605	0.00
9/23/2013	PACIFIC MONARCH	AURIGA	562,978	0.00
9/24/2013	PEGGY JO	PACIFIC EXPLORER	435,409	0.00
9/24/2013	PROGRESS	STORM PETREL	0	8.00
9/24/2013	PROGRESS	STORM PETREL	93,818	0.00
9/24/2013	PROGRESS	STORM PETREL	2,077	0.00
9/24/2013	MS AMY	STORM PETREL	55,262	7.00
9/24/2013	MS AMY	STORM PETREL	13,454	0.00
9/24/2013	MS AMY	STORM PETREL	1,557	0.00

TABLE 4. (cont.) TRANSFERS AMONG COOP MEMBERS				
DATE	TRANSFEROR	TRANSFEE	POLLOCK	CHINOOK
9/24/2013	MS AMY	STORM PETREL	10,891	0.00
9/24/2013	MS AMY	STORM PETREL	21,836	0.00
9/25/2013	GUN-MAR	PACIFIC MONARCH	125,287	0.00
9/25/2013	GUN-MAR	PACIFIC MONARCH	2,874	0.00
9/25/2013	PACIFIC MONARCH	MORNING STAR-2	3,071	0.00
9/25/2013	STORM PETREL	COMMODORE	376,933	0.00
9/25/2013	RAVEN	MAJESTY	19,610	0.00
9/25/2013	SEEKER	MAJESTY	25,338	0.00
9/25/2013	SEEKER	MAJESTY	5,333	0.00
9/25/2013	SEEKER	MAJESTY	90	0.00
9/25/2013	PEGASUS	MAJESTY	378,624	0.00
9/25/2013	PROVIDIAN	OCEAN EXPLORER	480,802	21.00
9/25/2013	PROVIDIAN	OCEAN EXPLORER	0	16.00
9/25/2013	STORM PETREL	AMERICAN EAGLE	183,641	0.00
9/25/2013	GOLD RUSH	AMERICAN EAGLE	11,752	0.00
9/25/2013	NORDIC FURY	AMERICAN EAGLE	1,987	0.00
9/25/2013	PACIFIC FURY	AMERICAN EAGLE	1,592	0.00
9/25/2013	COLLIER BROTHERS	AMERICAN EAGLE	29,324	0.00
9/26/2013	PEGASUS	ARCTURUS	186,827	0.00
9/26/2013	PEGASUS	ARCTURUS	0	2.00
9/26/2013	BRISTOL EXPLORER	ARCTIC EXPLORER	586,462	78.00
9/26/2013	BRISTOL EXPLORER	ARCTIC EXPLORER	0	2.00
9/26/2013	CAPE KIWANDA	PACIFIC EXPLORER	260,580	6.00
9/27/2013	PEGASUS	PACIFIC VIKING	115,879	0.00
9/30/2013	PEGASUS	PACIFIC VIKING	266,133	0.00
9/30/2013	PEGASUS	PACIFIC VIKING	0	54.00
9/30/2013	PEGASUS	PACIFIC VIKING	19,153	0.00
9/30/2013	ALDEBARAN	PACIFIC VIKING	242,315	15.00
9/30/2013	AJ	OCEAN EXPLORER	203	11.00
9/30/2013	AJ	OCEAN EXPLORER	18,877	0.00
9/30/2013	PROVIDIAN	OCEAN EXPLORER	320,082	0.00
9/30/2013	PROVIDIAN	OCEAN EXPLORER	0	54.00
10/1/2013	CAPE KIWANDA	ARCTIC EXPLORER	434,802	4.00
10/1/2013	CAPE KIWANDA	ARCTIC EXPLORER	0	36.00
10/1/2013	ALDEBARAN	ARCTURUS	602,058	0.00
10/3/2013	BRISTOL EXPLORER	ARCTIC EXPLORER	129,041	0.00
10/4/2013	ALDEBARAN	PACIFIC VIKING	343,492	16.00
10/5/2013	BRISTOL EXPLORER	OCEAN EXPLORER	475,428	0.00
10/7/2013	ALDEBARAN	PACIFIC VIKING	584,788	0.00
10/7/2013	EXODUS	OCEAN EXPLORER	0	15.00
10/8/2013	BRISTOL EXPLORER	OCEAN EXPLORER	368,698	0.00
10/8/2013	BRISTOL EXPLORER	OCEAN EXPLORER	0	63.00
10/8/2013	GOLDEN DAWN	DOMINATOR	450,000	80.00
10/8/2013	GOLDEN DAWN	DOMINATOR	0	40.00
10/9/2013	DOMINATOR	GOLDEN DAWN	450,000	0.00
10/11/2013	BRISTOL EXPLORER	OCEAN EXPLORER	118,513	0.00
10/11/2013	BRISTOL EXPLORER	OCEAN EXPLORER	0	43.00

TABLE 4. (cont.) TRANSFERS AMONG COOP MEMBERS				
DATE	TRANSFEROR	TRANSFeree	POLLOCK	CHINOOK
10/15/2013	EXODUS	OCEAN EXPLORER	0	15.00
10/15/2013	OCEAN EXPLORER	EXODUS	0	15.00
10/15/2013	ALDEBARAN	DOMINATOR	267,992	13.00
10/16/2013	COLUMBIA	ARCTURUS	522,035	1.00
10/16/2013	COLUMBIA	PACIFIC VIKING	513,815	0.00
10/18/2013	COLUMBIA	MAJESTY	357,111	1.00
10/18/2013	PEGGY JO	OCEAN EXPLORER	666,407	2.00
10/18/2013	COLUMBIA	VIKING EXPLORER	235,056	0.00
10/20/2013	MS AMY	MESSIAH	183	0.00
10/20/2013	COLUMBIA	GOLDEN DAWN	631,111	1.00
10/20/2013	COLUMBIA	ARCTURUS	468,425	0.00
10/20/2013	ALDEBARAN	PACIFIC VIKING	548,998	0.00
10/21/2013	PACIFIC EXPLORER	SOVEREIGNTY	198,569	0.00
10/21/2013	PACIFIC EXPLORER	SOVEREIGNTY	35,536	0.00
10/21/2013	INTREPID EXPLORER	SOVEREIGNTY	15,138	0.00
10/22/2013	CAPE KIWANDA	NORTHERN PATRIOT	106,809	0.00
10/22/2013	CAPE KIWANDA	NORTHERN PATRIOT	6,075	0.00
10/22/2013	BRISTOL EXPLORER	NORTHERN PATRIOT	125,891	0.00
10/22/2013	BRISTOL EXPLORER	ARCTURUS	410,138	0.00
10/22/2013	BRISTOL EXPLORER	ARCTURUS	42,433	0.00
10/22/2013	EXODUS	ARCTURUS	48,228	0.00
10/23/2013	PEGGY JO	OCEAN EXPLORER	342,333	6.00
10/23/2013	ALDEBARAN	GLADIATOR	74,609	0.00
10/23/2013	NORTHWEST EXPLORER	MAJESTY	6,578	0.00
10/23/2013	INTREPID EXPLORER	MAJESTY	2,874	0.00
10/23/2013	PEGGY JO	MAJESTY	248,053	0.00
10/23/2013	PEGGY JO	MAJESTY	9,160	0.00
10/23/2013	COLUMBIA	MAJESTY	34,756	0.00
10/23/2013	COLUMBIA	MAJESTY	13,579	0.00
10/23/2013	ALDEBARAN	MAJESTY	10,841	0.00
10/23/2013	ALDEBARAN	MAJESTY	202	0.00
10/23/2013	BRISTOL EXPLORER	MAJESTY	16,778	0.00
10/24/2013	EXODUS	GLADIATOR	267,643	0.00
10/24/2013	GOLDEN DAWN	DOMINATOR	0	13.00
10/24/2013	GOLDEN DAWN	SOVEREIGNTY	138,301	0.00
10/24/2013	DOMINATOR	SOVEREIGNTY	155,341	0.00
10/27/2013	DOMINATOR	ARCTIC EXPLORER	245,082	0.00
10/27/2013	DOMINATOR	ARCTIC EXPLORER	2,751	0.00
10/28/2013	EXODUS	OCEAN EXPLORER	79,846	0.00
10/28/2013	EXODUS	OCEAN EXPLORER	0	8.00
10/28/2013	EXODUS	OCEAN EXPLORER	8,240	0.00
10/28/2013	EXODUS	OCEAN EXPLORER	0	15.00
10/28/2013	GOLDEN DAWN	OCEAN EXPLORER	0	5.00
10/28/2013	GOLDEN DAWN	OCEAN EXPLORER	1,850	0.00
10/28/2013	ARCTIC EXPLORER	OCEAN EXPLORER	0	21.00
10/28/2013	ARCTIC EXPLORER	OCEAN EXPLORER	245,082	0.00
10/28/2013	ARCTIC EXPLORER	OCEAN EXPLORER	2,751	0.00

TABLE 4. (cont.) TRANSFERS AMONG COOP MEMBERS				
DATE	TRANSFEROR	TRANSFeree	POLLOCK	CHINOOK
10/28/2013	COLUMBIA	PERSEVERANCE	17,960	1.56
10/28/2013	PERSEVERANCE	OCEAN EXPLORER	17,960	0.00
10/28/2013	ARCTIC RAM	PACIFIC RAM	16,413	2.02
10/28/2013	PACIFIC RAM	ARCTIC RAM	16,413	0.00
10/28/2013	ARCTIC RAM	PREDATOR	8,005	0.00
10/28/2013	ARCTIC RAM	PERSEVERANCE	1,510	0.36
10/28/2013	ARCTIC RAM	LISA MELINDA	9,954	2.14
10/28/2013	LISA MELINDA	OCEAN EXPLORER	9,954	0.00
10/28/2013	PERSEVERANCE	OCEAN EXPLORER	1,510	0.00
10/28/2013	PREDATOR	OCEAN EXPLORER	8,005	0.00
10/28/2013	ARCTIC RAM	RAVEN	10,149	0.00
10/28/2013	ARCTIC RAM	PEGASUS	6,915	2.25
10/28/2013	RAVEN	OCEAN EXPLORER	10,149	0.00
10/28/2013	ARCTIC RAM	OCEAN EXPLORER	39,920	0.00
10/28/2013	ARCTIC RAM	OCEAN EXPLORER	243	0.00
10/28/2013	PEGASUS	OCEAN EXPLORER	0	8.00
10/28/2013	PEGASUS	OCEAN EXPLORER	6,915	0.00
10/28/2013	MARCY J	OCEAN EXPLORER	41,573	0.00