



## Commercial Fishing Vessel Safety

**15 October 2015 –  
Mandatory Commercial  
Fishing Vessel Safety  
Examination**

Commercial Fishing Vessel Safety  
**EXAMINATIONS**

**VESSEL**  
☐ Documented  
☐ Undocumented

**OPERATIONS**  
☐ Cold Waters  
☐ Warm Waters  
☐ Inside Boundary Line  
☐ Outside Boundary Line

**FROM COASTLINE**  
☐ < 3 NM  
☐ < 12 NM  
☐ < 20 NM  
☐ < 50 NM  
☐ > 50 NM  
☐ > 100 NM

THIS VESSEL MEETS ALL  
USCG COMMERCIAL  
FISHING INDUSTRY  
REGULATIONS  
FOR OPERATING  
AREAS AS MARKED

**EXPIRES**  
2014 ☐  
2015 ☐  
2016 ☐  
2017 ☐

JAN	JUL
FEB	AUG
MAR	SEP
APR	OCT
MAY	NOV
JUN	DEC

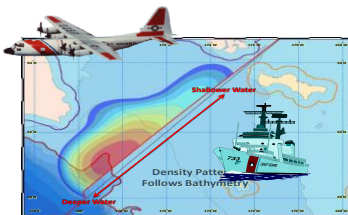
CG-5587A  
(Rev. 6/08)

NO. 123456

U.S. Department of Homeland Security



## Maritime Boundary Line April – May 2015



### Activity within 20NM of US/RS MBL:

- 5 vessels based upon RS VMS
- No suspected incursions

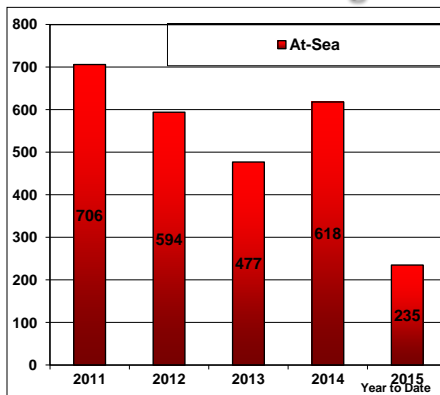
### USCG Patrol Efforts on US/RS MBL:

- 3 total cutter days (USCGC SHERMAN)

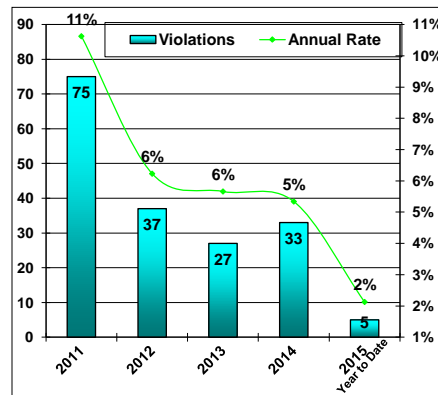


## Fishing Vessel Boardings & Fisheries Violations

**Vessel Boardings**



**Vessels With Violations**



## Halibut & Sablefish Enforcement April – May 2015

### IFQ Halibut & Sablefish

- 19 boardings of IFQ halibut vessels
- 06 boardings of IFQ sablefish vessels
- 01 fisheries violation (no logbook)

### Charter & Recreational/Subsistence Halibut

- 13 boardings of Recreational/Subsistence halibut vessels



## Crab Fisheries April – May 2015

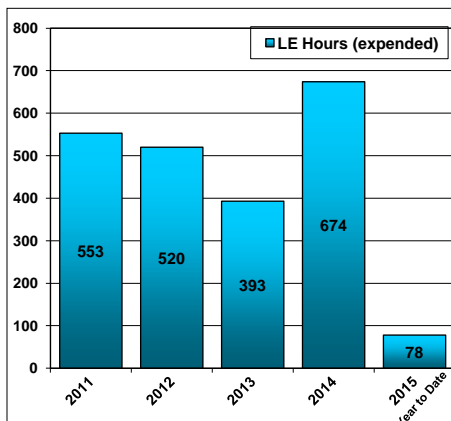
### Commercial Fishing Vessel Safety Enforcement

- CGC ALEX HALEY and SHERMAN conducted 6 boardings on crab vessels
- One safety violation (lifering discrepancies)
- One fisheries violation (no boarding ladder)

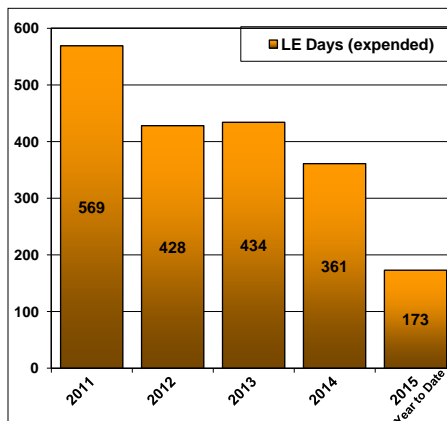


## Major Cutter Days and HC-130 Hours

### Annual HC-130 Hours



### Annual Major Cutter Days





## Questions?



**LCDR Corrie Sargent**  
**03 June 2015**