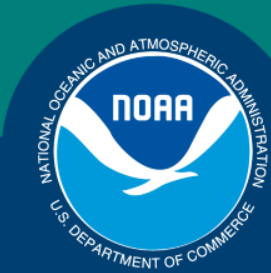


*Science, Service, Stewardship*



# **Economic Status Report Summary: BSAI Crab 2016**

Crab Plan Team Meeting

September 21, 2016

Brian Garber-Yonts

Economics and Social Science Research Program,  
AFSC

**NOAA  
FISHERIES  
SERVICE**

2015 SAFE Economic Status Reports available at:

<http://www.afsc.noaa.gov/REFM/Socioeconomics/SAFE/default.php>



The screenshot shows the NOAA Fisheries Alaska Fisheries Science Center website. The header includes the NOAA logo, the text "NOAA FISHERIES", and "ALASKA FISHERIES SCIENCE CENTER". Below the header is a navigation bar with links: General Info, Species, Programs, Publications, Data & Tools, Images, Education & Outreach, and Search. The main content area is titled "Economic and Social Sciences Research" and "Annual Economic Status Reports from the Stock Assessment and Fishery Evaluations". It features two sections: "Groundfish Fisheries of the Gulf of Alaska and Bering Sea/Aleutian Islands Area" and "King and Tanner Crab Fisheries of the Bering Sea and Aleutian Islands Regions". Each section has a list of links: "Most recent Economic Status Report (December 2013)", "Previous reports", "Data downloads", and "User feedback survey". On the right side, there is a sidebar menu with links: "REFM Home", "Socioeconomics", "Research", "Publications", "Posters", "Economic Status Reports", "Data Collection Programs", "Alaska Community Profiles", "Bibliography", "Resources", and "Personnel".

**NOAA FISHERIES** | ALASKA FISHERIES SCIENCE CENTER  
NATIONAL OCEANIC AND ATMOSPHERIC ADMINISTRATION

General Info Species Programs Publications Data & Tools Images Education & Outreach Search

## Economic and Social Sciences Research

### Annual Economic Status Reports from the Stock Assessment and Fishery Evaluations

[Groundfish Fisheries of the Gulf of Alaska and Bering Sea/Aleutian Islands Area](#)

- [Most recent Economic Status Report \(December 2013\)](#)
- [Previous reports](#)
- [Data downloads](#)
- [User feedback survey](#)

[King and Tanner Crab Fisheries of the Bering Sea and Aleutian Islands Regions](#)

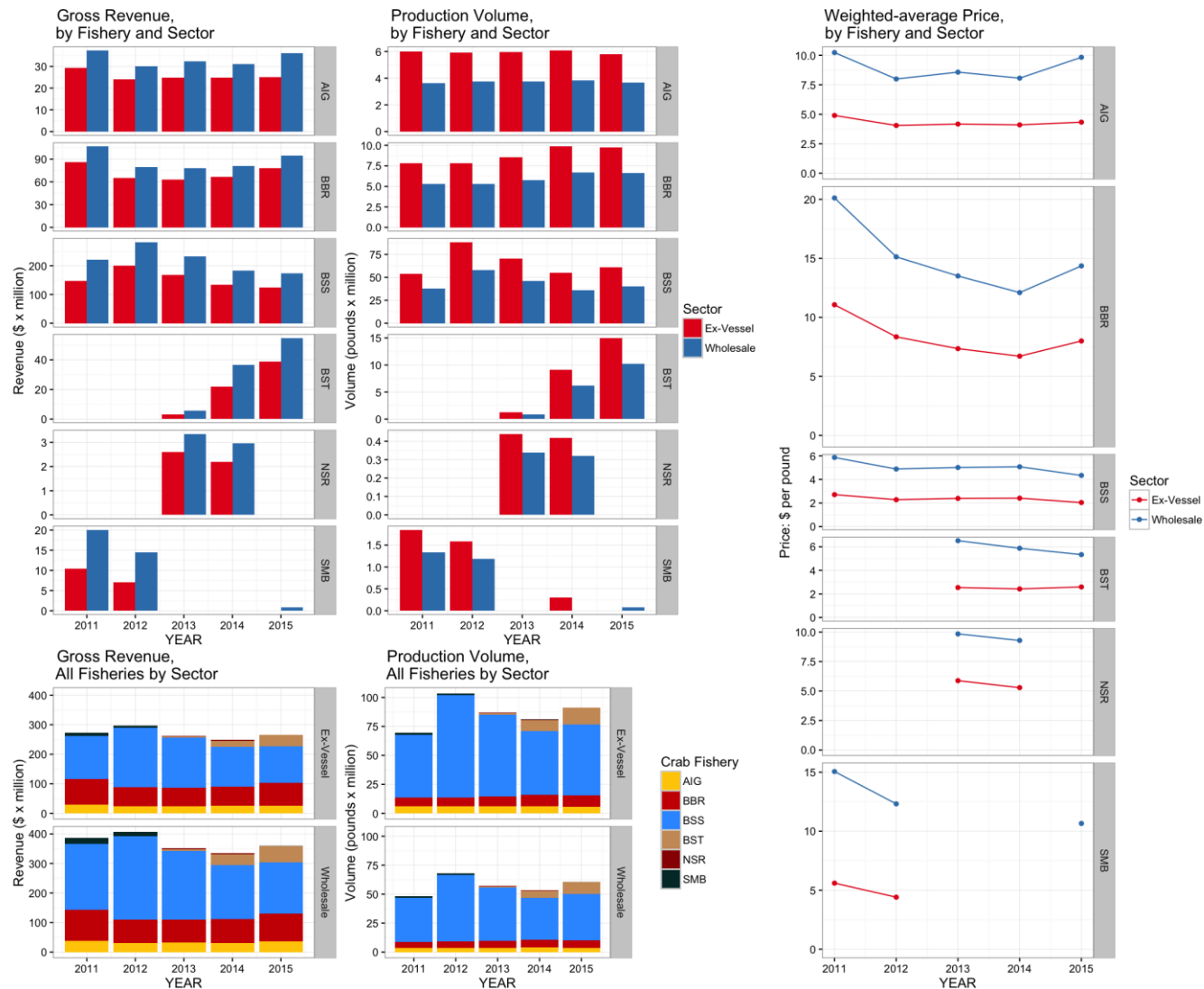
- [Most recent Economic Status Report \(December 2013\)](#)
- [User feedback survey](#)

**REFM Home**

**Socioeconomics**

- Research
- Publications
- Posters
- Economic Status Reports
- Data Collection Programs
- Alaska Community Profiles
- Bibliography
- Resources
- Personnel

# Summary of key economic indicators: 2011 – 2015 production and sales by BSAI crab fishery

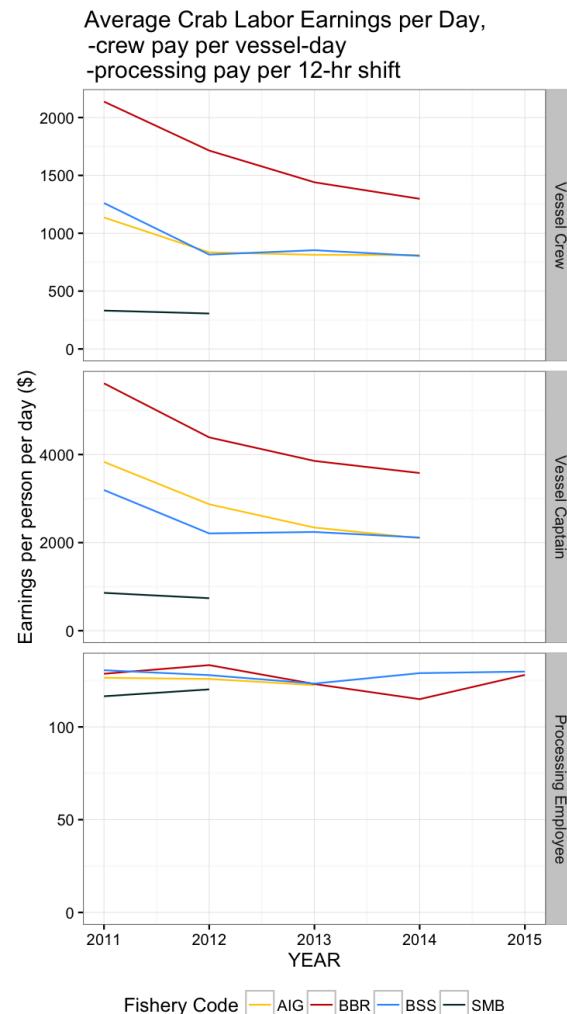
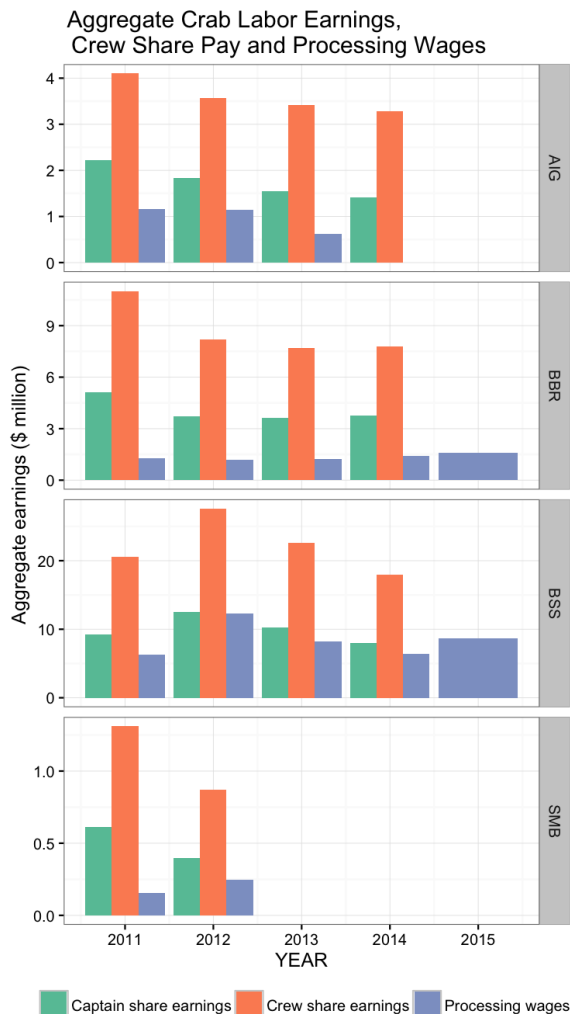
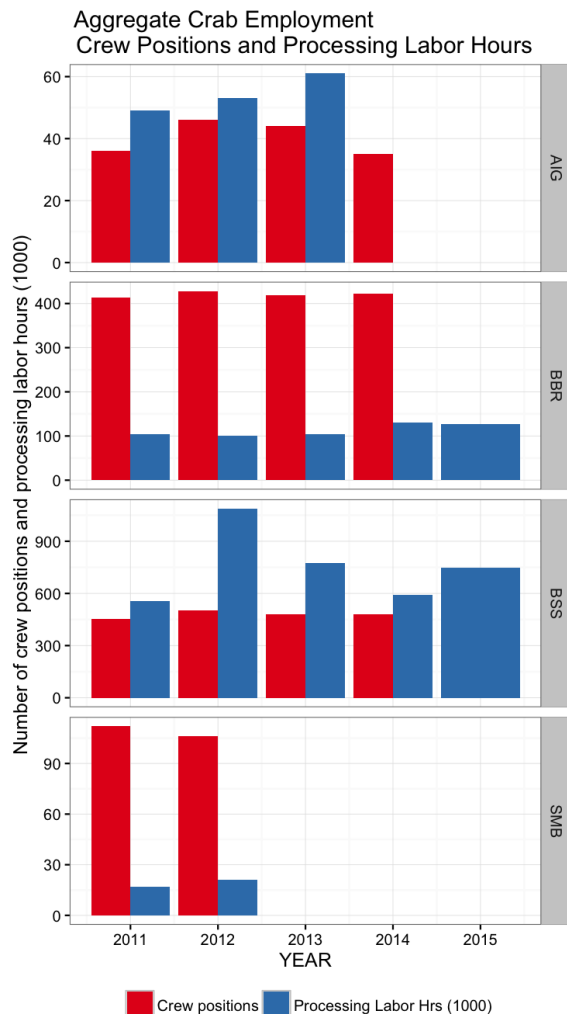


## Summary of key economic indicators: Production and sales, 2015 BSAI crab fisheries

	Pounds (metric tons)	% change	Gross revenue	% change
<b>Harvest sector</b>	91.5 million (41.5 thousand <i>mt</i> )	+13%	\$266 million	+7.2%
<b>Processing sector</b>	60.5 million (27.4 thousand <i>mt</i> )	+13%	\$360 million	+13.7%

	Ex-vessel average price/lb	% change	1st Wholesale average price/lb	% change
<b>AIG</b>	\$8.43	5.6	\$17.89	22.0
<b>BBR</b>	\$14.71	19.2	\$26.46	18.7
<b>BSS</b>	\$4.45	-15.4	\$9.41	-14.4
<b>BST</b>	\$5.01	7.0	\$11.20	-9.2

# Summary of key economic indicators: crab employment and earnings, 2011-2015 CR fisheries



## **Summary of key economic indicators: crab employment and earnings, 2014 CR fisheries**

- Harvest sector

82 active vessels over all CR fisheries (from 74 in 2014)

Crew positions: 1332 (from 1191 in 2014)

note: aggregated over distinct counts for each CR fishery

Crew share earnings: \$37.9 million (+18% Y/Y)

Captain share earnings: \$16.7 million (+18% Y/Y)

- Processing sector

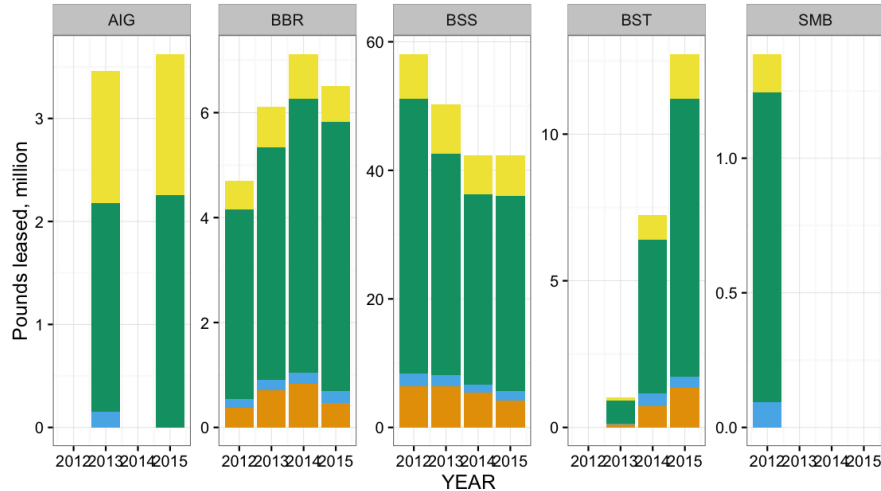
Paid hours: 1105 thousand (+31% Y/Y)

Processing labor wages: \$12.7 million (+39% Y/Y)

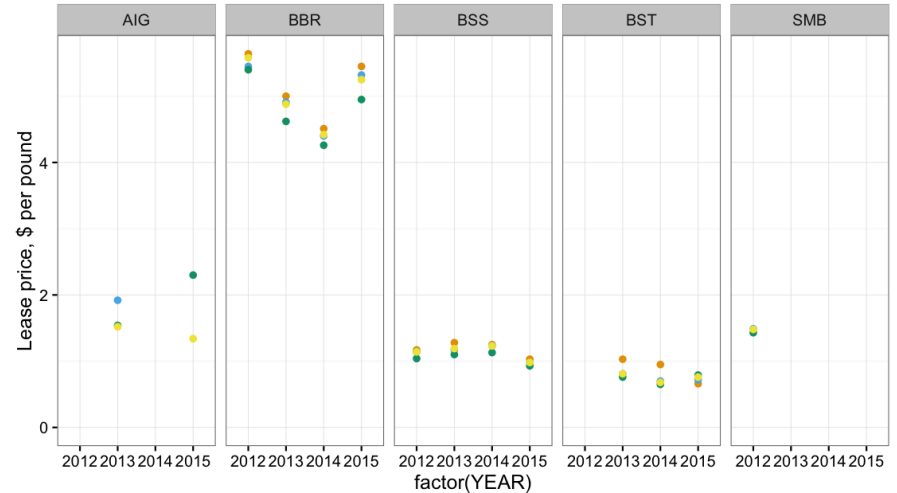
Estimated average hourly wage increased to \$10.68 (+\$0.63/hr)

# Summary of key economic indicators: crab IFQ lease activity, 2012 - 2015

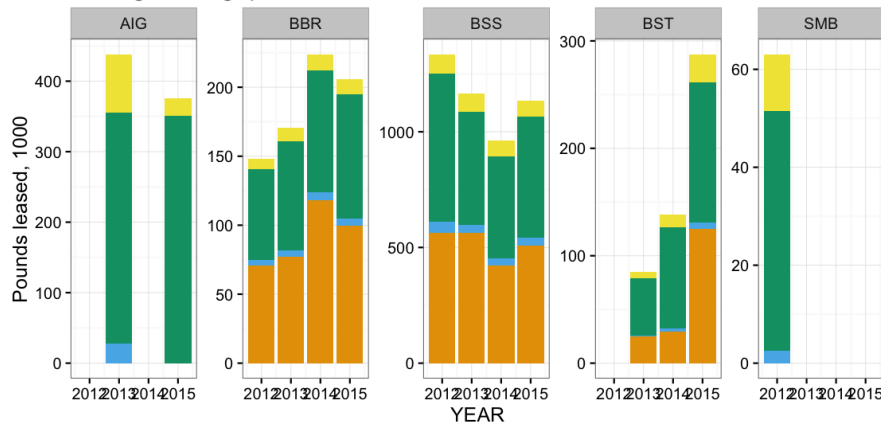
Total fishing quota leased volume, all vessels



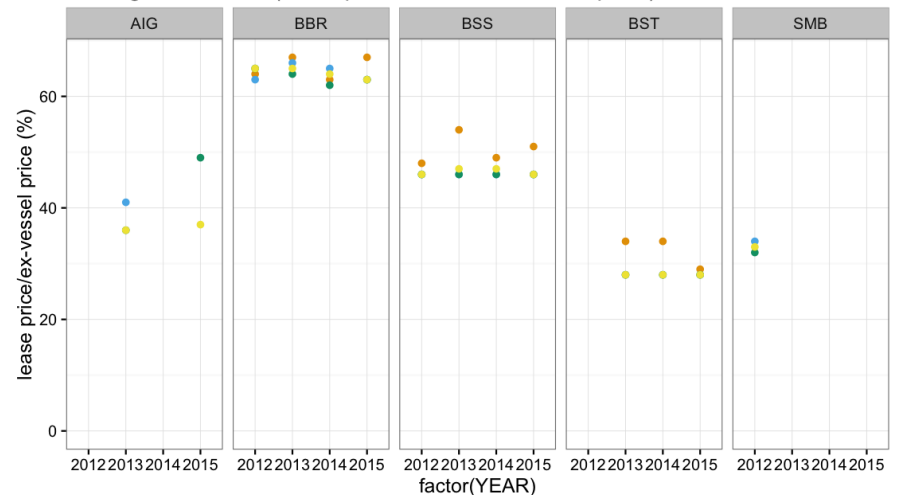
Average lease price per pound, vessel median



Average fishing quota leased volume, vessel median



Average lease rate (lease price as % of ex-vessel price), vessel median



QUOTA\_TYPE CDQ + ACA CVC + CPC CVO A CVO B + CPO

## **Summary of key economic indicators: crab IFQ lease activity, 2015 BBR and BSS fisheries**

- **BBR Fishery**

- 6.5 million pounds leased (-9%)

- \$33.6 million total lease payments (+9%)

- \$5.24 per pound (median)

- 64% of ex-vessel price (median)

- **BSS Fishery**

- 42.3 million pounds leased (0%)

- \$41.96 million total lease payments (-12%)

- \$0.98 per pound (median)

- 47% of ex-vessel price (median)

- **BST Fishery**

- 12.7 million pounds leased (+76%)

- \$9.8 million total lease payments (+102%)

- \$0.73 per pound (median)

- 28% of ex-vessel price (median)



# BSAI Crab SAFE Economic Status Report

## Economic Output

- Annual TAC/GHL, Landings, Deadloss, and Finished Product Volume
- Ex-vessel and First Wholesale Prices and Revenue Value of Production

## Income and Employment

## Operating, Production, and Capital Costs

## Quota Holdings, Sales, and Leasing Activity

- QS/PQS Holding
- Harvest Quota Lease Activity and Average Prices
- Quota Share Sale Transfers and Average Prices
- IFQ and QS Price Comparison

## Fishing Capacity, Effort, and Efficiency

## Concentration of Catch Volume

## International Trade in Crab Commodities

## Catch-share Program Economic Performance Metrics

- IFQ quota and landings
- Utilization of available IFQ
- Number of entities holding IFQ crab share
- Active vessels fishing IFQ
- Number of trips harvesting IFQ Crab
- Season lengths
- Total IFQ-crab and non-IFQ-crab landings revenue
- Average combined IFQ crab price per pound
- IFQ crab revenue per vessel
- IFQ Crab revenue per trip

## Price and Revenue Forecasts