

17th COAST GUARD DISTRICT ENFORCEMENT REPORT



October - November 2016

*Prepared By: LCDR Corrie Sergent
Response and Enforcement Branch
Coast Guard District
P.O. Box 25517
Juneau, AK 99802-5517*

Table of Contents	Page
I. High Seas Drift Net Enforcement	2
II. US/Russian Maritime Boundary Line (MBL) Enforcement	2
III. US/Canadian EEZ Boundary (Dixon Entrance) Enforcement	2
IV. Steller Sea Lions and Critical Habitat Enforcement	2
V. Commercial Fishing Vessel Boarding Statistics	2
VI. Halibut and Sablefish Enforcement.....	3
VII. Crab Fisheries.....	3
VIII. Commercial Fishing Vessel Safety/Search and Rescue Cases.....	3
IX. Coast Guard Resource Summary	4

Appendices

Appendix A October - November 2016 Search and Rescue Cases	5-6
Appendix B October - November 2016 Federal Fisheries Boardings without Violations	7-8
Appendix C October - November 2016 Federal Fisheries Boardings with Violations	9-10

Figures

1. Fisheries Boardings By Year.....	2
2. Fisheries Violations By Year	2
3. Safety Statistics	3
4. Annual HC-130 Flight Hours.....	4
5. Annual Major Cutter Days	4
6. OCT-NOV HC-130 Hours	4
7. OCT-NOV Major Cutter Days.....	4

List of Abbreviations

CFVS – Commercial Fishing Vessel Safety	HSDN – High Seas Drift Net
FBS - Russian Federal Border Service	MBL – US/Russian Maritime Boundary
FF/V – Foreign Fishing Vessel	NPSC – North Pacific SAR Coordinator
GOA – Gulf of Alaska	SAR – Search and Rescue
HC-130 – USCG Fixed-Wing Aircraft	UMIB –Urgent Marine Info Broadcast
HEC/MEC – High/Medium Endurance Cutters	WLB –225ft Buoy Tender
HH65/60 – CG helicopter	WPB – 110ft Patrol Boat
MARB – Marine Assistance Request Broadcast	POB – Persons on board
CGC – Coast Guard Cutter	IVO – In the vicinity of
SMC – SAR Mission Coordinator	MEDEVAC – Medical Evacuation
NVG – Night Vision Goggles	AVDET – Aviation Detachment
FOL – Forward Operating Location	

I. High Seas Drift Net (HSDN) Enforcement

There were no HSDN enforcement activities conducted during the reporting period.

II. U.S./Russian Maritime Boundary Line (MBL) Enforcement

Activity along the MBL was low over the reporting period with an average of one vessel detected within 20 miles of the MBL during October. There have been no detected incursions by FFVs into the U.S. EEZ this season.

III. U.S./Canadian EEZ Boundary (Dixon Entrance) Enforcement

There was light fishing activity during the reporting period along the U.S.-Canadian EEZ boundary in the vicinity of Dixon Entrance. All Canadian fishing vessels sighted were south of the A-B line and no incursions into U.S. waters were detected.

IV. Marine Protected Resources and Critical Habitat Enforcement

The Coast Guard monitors more than 151 critical habitat areas around Alaska each month as part of routine cutter and aircraft patrol activity. From October to November, the U.S. Coast Guard did not receive any requests for marine protected resource assistance.

V. Commercial Fishing Vessel Boarding Statistics

There were 65 domestic fisheries and fishing vessel safety boardings conducted by the U.S. Coast Guard during the reporting period. These boardings resulted in a total of 16 safety violations onboard 11 vessels, six federal fisheries violations onboard three vessels, and four fisheries written warnings onboard four vessels. Figures 1 and 2 show the historic trends for boardings and violations. Appendices B and C list the boardings which occurred during the reporting period.

Figure 1. Fisheries Boardings By Year

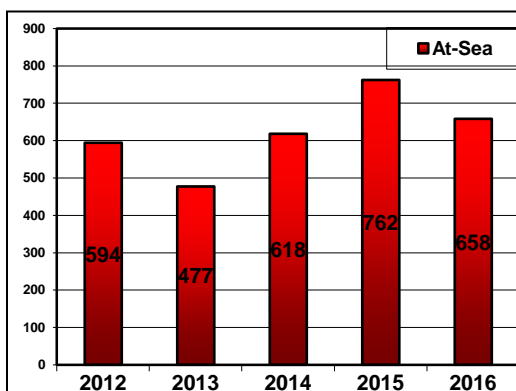
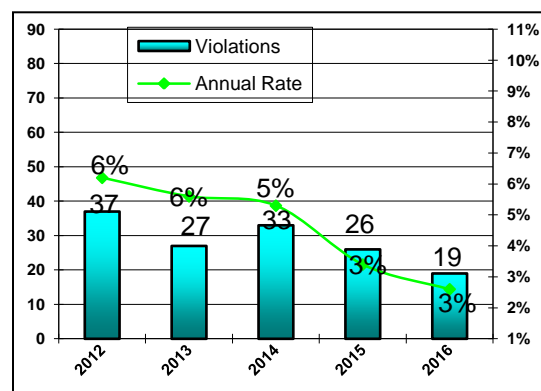


Figure 2. Fisheries Violations by Year



Oct - Nov 2015 Boardings

F/V Boardings (at sea):75
Boardings w/fisheries violations:3
Violation Rate:4.0%

Oct - Nov 2016 Boardings

F/V Boardings (at sea):40
Boardings w/fisheries violations:6
Violation Rate:15.0%

VI. Halibut and Sablefish Enforcement

Coast Guard patrols completed 20 boardings on fishing vessels targeting halibut and sablefish during the reporting period. There were nine boardings of IFQ halibut vessels, detecting two fisheries violations onboard one vessel and six safety violations onboard two vessels. There were five boardings of IFQ sablefish vessels, detecting three fisheries violations onboard one vessel and one safety violation onboard one vessel. No voyages were terminated for significant safety concerns.

There were no boardings on charter vessels targeting halibut. There were six boardings on recreational vessels targeting halibut, detecting no fisheries violations and two safety violations onboard one vessel. No voyages were terminated for significant safety concerns.

VII. Crab Fisheries

The CGC MORGENTHAU conducted six commercial vessel safety boardings on vessels participating in the Bering Sea and Aleutian Islands crab fisheries following the 15 October 2016 opening.

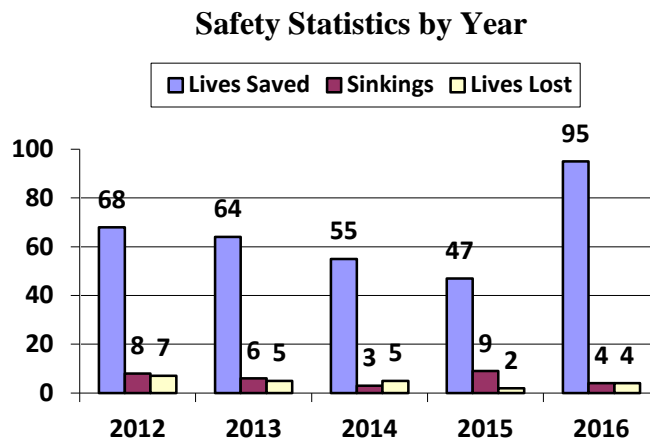
Air Station Kodiak deployed an MH-60 to Cold Bay for the Bering Sea crab season opening. The MH-60 remained in Cold Bay through 15 November and will return on 15 January 2017 as activity increases in the BSAI crab fisheries and trawl fisheries.

VIII. Commercial Fishing Vessel Safety/Search and Rescue Cases

During the reporting period, 16 safety violations were detected on 11 vessels. There was one voyage termination for safety violations posing an especially hazardous condition. A comprehensive list of violations can be found in Appendix C.

There were 14 search and rescue (SAR) cases involving fishing vessels in U.S. waters, resulting in four lives saved, zero lives lost, and zero vessel sinkings. Appendix A provides a comprehensive list of SAR cases involving fishing vessels over the reporting period.

Figure 3. Historical Overview of CFVS Statistics



XI. Coast Guard Resource Summary

Figures 4 and 5 show the *annual* HC-130 aircraft law enforcement hours and Medium and High Endurance Cutter days used in the Seventeenth District. Figures 6 and 7 show the same information over the last three years for the *reporting period only*.

Figure 4. Annual HC-130 Hours

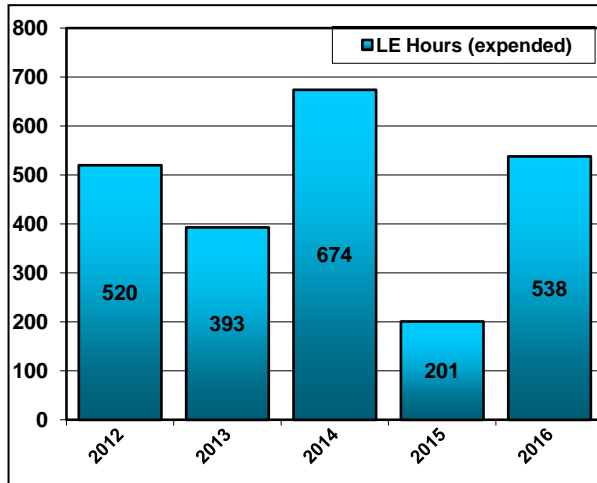
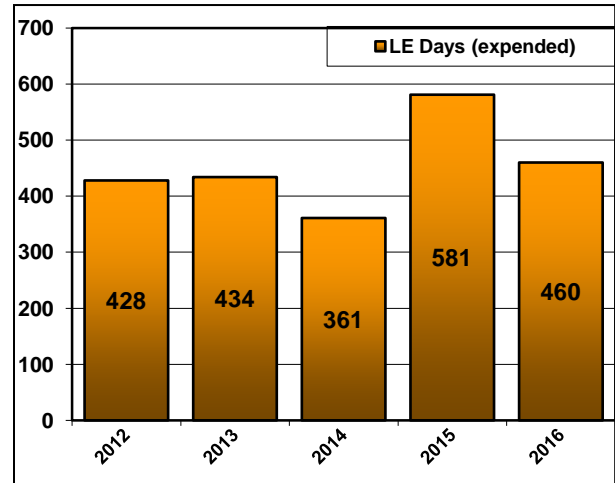


Figure 5. Annual Major Cutter Days



Oct - Nov 2015

3 WHECs patrolled.....79 days
 1 WMEC patrolled..... 15 days
 1 WLB patrolled 2 days
 7 WPBs patrolled 74 days
Total Cutter patrol..... 170 days

HC-130s flew28 hours
 HH-60/65s flew..... 149 hours

Oct - Nov 2016

1 WHEC patrolled.....47 days
 1 WMEC patrolled.....21 days
 1 WLB patrolled1 day
 4 WPBs patrolled18 days
Total Cutter patrol.....87 days

HC-130s flew36 hours
 HH-60/65s flew.....74 hours

Figure 6. Oct-Nov HC-130 Hours

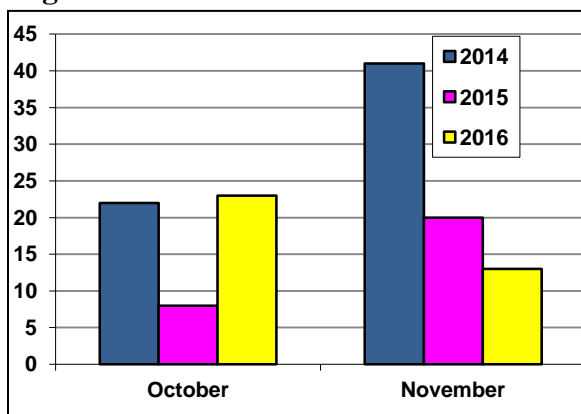
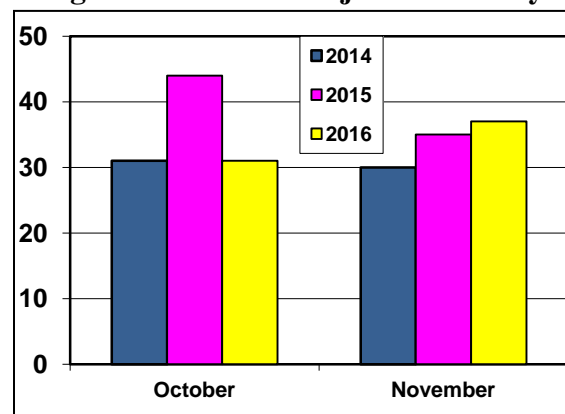


Figure 7. Oct-Nov Major Cutter Days



Appendix A
October - November 2016
Search and Rescue Cases

Date	Vessel	Case Specifics
9/30/16	BLACKWATER	Sector Anchorage received a report of F/V BLACKWATER, disabled north of Montague Island. Station Valdez launched a response boat and Air Station Kodiak FOL Cordova launched a HH-60 to assist. Prior to Coast Guard assets arriving on scene, BLACKWATER ran aground on Montague Island and the operator walked safely ashore. The HH-60 arrived on scene and transported the vessel operator to Cordova. No injuries were reported and no further Coast Guard assistance was requested.
10/4/16	BOSTON WHALER	Sector Juneau received notification of a possible overdue 17ft Boston Whaler with one person onboard crab fishing IVO Nakwasina Passage. Sector issued a UMIB and vessel NORTHWIND located the subject on the shoreline after an outgoing tide grounded the vessel which was overloaded with crab pots. The vessel refloated and no further Coast Guard assistance was requested.
10/5/16	F/V MJ	STA Ketchikan came across the F/V MJ, a disabled vessel with a fouled prop at the south end of Tongass Narrows. STA Ketchikan took the vessel in tow and safely returned to Bar Harbor. No further Coast Guard assistance was requested.
10/9/16	F/V CYNOSURE	District 17 received a report from F/V CYNOSURE that they had sheered their prop shaft approx. 120 NM west of Dutch Harbor. D17 placed the vessel on a communications schedule while F/V COASTAL NAVIGATOR, followed by F/V BALLYHOO, towed F/V CYNOSURE safely back to Dutch Harbor. No further Coast Guard assistance was requested.
10/11/16	ALEUTIAN BEAUTY	District 17 received a report from F/V ALEUTIAN BEAUTY of a crack in their forward collision bulkhead and flooding in their forward space 30 NM west of Atka. The space was sealed and spilling out of the space's vent on deck, and was not in immediate distress. The ALEUTIAN BEAUTY was placed on a communications schedule while they transited safely to port in Atka. No further Coast Guard assistance was requested.
10/15/16	MARIA	Sector Juneau received a report of F/V MARIA, a 40ft gillnetter, that ran aground and sank on the south side of Woronofski Island, 6 NM SW of Wrangell. Wrangell SAR arrived on scene and reported the vessel partially submerged with all 03 persons accounted for. Wrangell SAR transported members to Wrangell. No further Coast Guard assistance was requested.
10/16/16	SEA DREAM	Sector Anchorage received a distress call from F/V SEA DREAM taking on water near Discovery Rocks, Kodiak. Sector Anchorage assumed SMC and launched a HH-60, which located the vessel aground on Discovery Rocks. Two good Samaritan vessels refloated SEA DREAM. The HH-60 and the good Samaritan vessels then escorted SEA DREAM to Dog Harbor. No further Coast Guard assistance was requested.

Date	Vessel	Case Specifics
10/18/16	PACIFIC SOUNDER	District 17 received a distress call from F/V PACIFIC SOUNDER, disabled north of Cold Bay, AK. District 17 assumed SMC and diverted CGC MORGENTHAU who placed the vessel in tow. The tow was later relieved by commercial salvage vessel SARATOGA, which completed the tow to Dutch Harbor, AK. No further Coast Guard assistance was requested.
10/22/16	BRAVADO	Sector Anchorage received a report of F/V BRAVADO, disabled near Ugak Island. The vessel made arrangements with F/V COLUMBIA to receive a tow to port. Sector maintained communications with BRAVADO until the COLUMBIA towed it back to St. Paul Harbor in Kodiak. No further Coast Guard assistance was requested.
10/26/16	SANDRA L	Sector Juneau received a distress call from F/V SANDRA L, taking on water near Redoubt Bay, Sitka. Sector Juneau assumed SMC and a HH-60 was launched and located the vessel. A good Samaritan was on scene and safely embarked the 01 person from SANDRA L. No further Coast Guard assistance was requested.
10/30/16	SEABROOKE	Sector Anchorage received a MEDEVAC request for a crew member experiencing medical issues aboard F/V SEABROOKE north of Cold Bay, AK. Case evaluated and SMC recommended MEDEVAC. District 17 launched a HH-60. Once on scene, the HH-60 hoisted and transported the crewmember to Cold Bay, AK. A C-130 then transported the crewmember to Kodiak for further care. No further Coast Guard assistance was requested.
11/09/16	BLUE NORTH	District 17 received a MEDEVAC request for a crew member with a serious injury aboard F/V BLUE NORTH northwest of St. Paul, AK. Case evaluated and SMC recommended MEDEVAC. District 17 launched a HH-60. Once on scene, the HH-60 hoisted and transported the crewmember to St. Paul, AK. A C-130 then transported the crewmember to Anchorage for further care. No further Coast Guard assistance was requested.
11/14/16	SIBERIAN SEA	District 17 received a medical consultation for a crew member with medical issues aboard F/V SIBERIAN SEA northwest of St. Paul, AK. Case evaluated and SMC recommended the vessel transport the crewmember to St. Paul for further treatment. No further Coast Guard assistance was requested.
11/18/16	LUCRATIVE	Sector Anchorage received a distress call from F/V LUCRATIVE, taking on water north of Kodiak, AK. Sector assumed SMC and launched a HH-60 to locate the vessel. Once on scene, the HH-60 delivered a dewatering pump to LUCRATIVE, which was able to keep up with the flooding. The HH-60 escorted the vessel back to Kodiak. No further Coast Guard assistance was requested.

Appendix B
October - November 2016
Fisheries Boardings without Violations

DATE	VSL NAME	SPECIES	AREA
9/14/16	ARCTIC ADDICTION	200	3A
9/15/16	JULIA LYNN	200	3A
9/17/16	AK7323J	430	659
9/17/16	AK3898AC	430	659
9/17/16	AK7422AR	200	2C
9/20/16	BIG BLUE	270	519
9/20/16	VIEKODA BAY	110	519
9/20/16	BRAVADO	200/710	4A
9/20/16	AMERICAN EAGLE	270	610
9/20/16	ST. DOMINICK	200	4A
9/20/16	AK5455AK	200	2C
9/23/16	CYNOSURE	200/710	4B
9/27/16	OCEAN STORM	270	610
9/27/16	ALASKA BEAUTY	270	610
9/27/16	OCEAN RANGER	710	WGOA
9/28/16	AK5775AJ	430	659
9/28/16	SHELA	710	WGOA
9/28/16	POLAR STAR	200/710	4A/WGOA
9/28/16	DELIVERANCE	710	WGOA
9/28/16	BELLA DAWN	200/710	2C
9/29/16	AVALANCHE	710	CG
10/1/16	TSUNAMI	895	659
10/2/16	LA DONNA ROSE	200	2C
10/3/16	AK3478AF	815	659
10/5/16	STELLER SEA	815	659
10/5/16	PATHFINDER	815	659
10/10/16	PACIFIC VENTURE	110	519
10/15/16	ROLLO	921	517
10/15/16	BRISTOL MARINER	921	517
10/15/16	ALASKA VICTORY	127	513
10/15/16	AMERICAN NO. 1	127	513
10/15/16	CONSTELLATION	127	513
10/16/16	BLUE NORTH	110	517
10/17/16	NORTHERN GLACIER	270	517
10/18/16	AFOGNAK STRAIT	200	4A
10/18/16	MICHELLE RENEE	270	610

DATE	VSL NAME	SPECIES	AREA
10/23/16	AK400AP	895	519
10/24/16	SPARTAN	110	519
10/24/16	VAERDAL	110	519
10/24/16	ALASKA SPIRIT	921	519
10/28/16	*UNKNOWN	200	3A
10/28/16	ALASKA WARRIOR	127	519
10/31/16	ALASKA SPIRIT	127	519
11/4/16	COMMITMENT	110	517
11/6/16	SCANDIES ROSE	921	509
11/6/16	BILLIKIN	110	509
11/8/16	SAGA	921	509
11/15/16	BLUE BALLARD	110	517
11/15/16	REBECCA IRENE	127	509

Appendix C
October – November 2016
Fisheries Boardings with Violations

DATE	UNIT	VSL NAME	SPECIES	NOTES AND DETAILS
9/16/16	STA KETCHIKAN	AK5245AE	200	Registration and sound producing device not onboard.
9/17/16	STA KETCHIKAN	AK7924AL	430	Expired visual distress signals
9/20/16	LIBERTY	LOKAHI	710	Documentation not onboard
9/24/16	MORGENTHAU	ERLA N	923	Failure to respond to CG aircraft on channel 16.
9/25/16	MORGENTHAU	BALLYHOO	710	Retention of an IFQ species caught with fixed gear without a valid IFQ permit or IFQ hired master permit in the name of the individual onboard. Failure to maintain onboard or present an IFQ permit for inspection. No original federal fisheries permit onboard vessel for inspection.
9/29/16	CHANDELEUR	NITE LITE	200/710	Expired hydrostatic release on EPIRB, expired EPIRB inspection, expired visual distress signals, improperly mounted fire extinguisher, and failure to accurately maintain halibut and groundfish logbook.
10/1/16	STA KETCHIKAN	ALL C'S	NA	Registration not onboard.
10/1/16	STA KETCHIKAN	NINA FAY	965	Visual distress signals not onboard.
10/2/16	STA KETCHIKAN	KELLY ANN	895	Life raft expired within last six months.
10/3/16	STA KETCHIKAN	LITTLE LION	965	Survival craft not serviceable.
10/3/16	STA KETCHIKAN	APRIL M	815	Voyage terminated due to insufficient number of immersion suits and expired liferaft.
10/5/16	STA KETCHIKAN	MARSHA ANN	815	Expired visual distress signals.
10/18/16	MORGENTHAU	SEA MAC	270	Written warning issued by NOAA OLE for improper record keeping (USCG/NOAA boarding).
10/28/16	MORGENTHAU	PINNACLE	921	Written warning issued by NOAA OLE for retention of prohibited species (USCG/NOAA boarding).

DATE	UNIT	VSL NAME	SPECIES	NOTES AND DETAILS
10/28/16	MORGENTHAU	ARCTIC PROWLER	110	Written warning issued by NOAA OLE for failure to test flow scale every 24 hours when use of scale is required (USCG/NOAA boarding).
10/28/16	MORGENTHAU	COURAGEOUS	110	Written warning issued by NOAA OLE for failure to test flow scale every 24 hours when use of scale is required (USCG/NOAA boarding).