

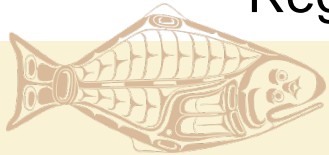


Summary of the IPHC 2016 Interim Meeting

NPFMC Meeting
8 December, 2016

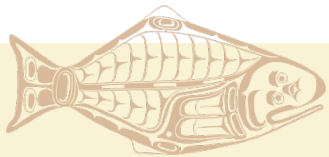
2016 IPHC Interim Meeting (IM092)

- 29-30 November 2016 in Seattle
- Primarily an informational meeting
 - Open to the public and webcast
- Agenda items:
 - 2016 fishery summary
 - Spatio-temporal modeling of survey data
 - Stock assessment, apportionment, and catch tables for 2017
 - Harvest policy and management strategy evaluation
 - Research program
 - Regulatory proposals

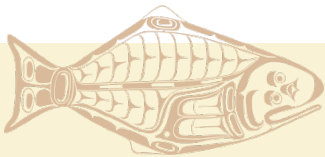
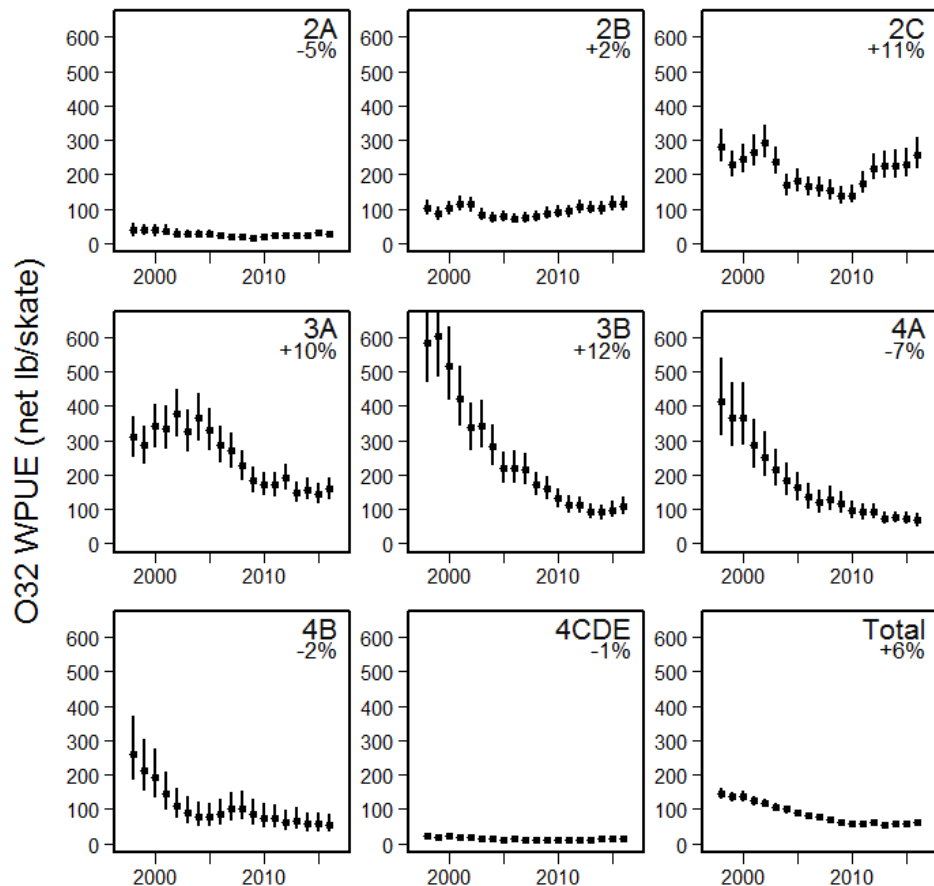


Stock assessment summary

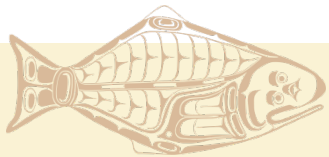
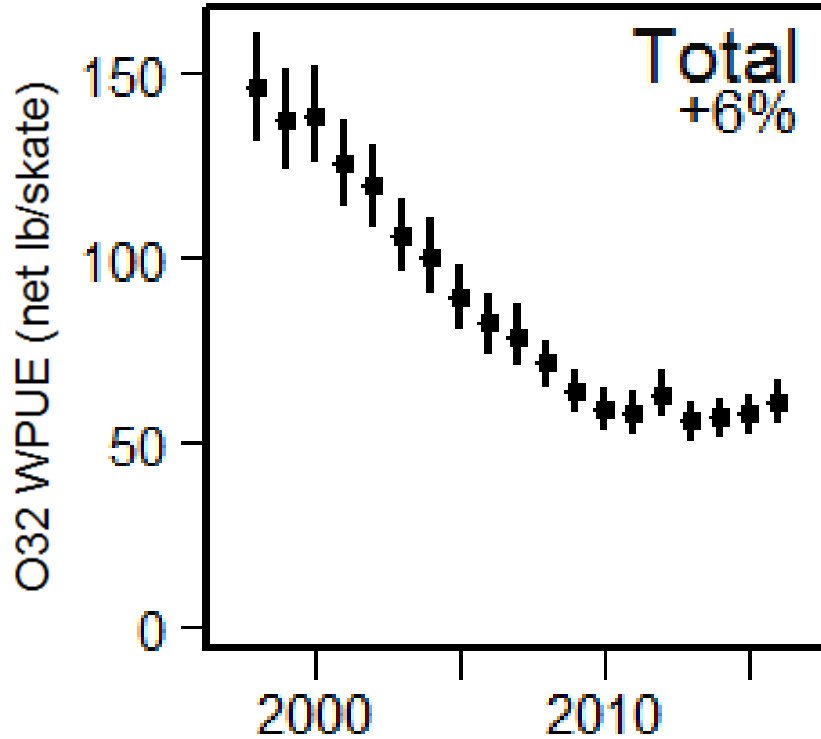
- Continued slow stock increase coastwide
- Further bycatch reductions in 2016
- Harvest policy results variable among areas



Survey O32 WPUE trends (constant scale)



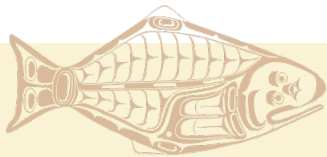
Survey O32 WPUE overall trend



Recent Removals (M lbs net)

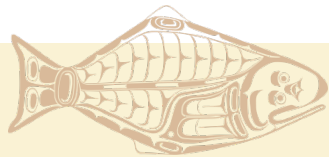
Year	Landings	Wastage	Rec.	Pers./Sub.	Bycatch	Total
2012	31.99	1.67	6.78	1.15	9.20	50.79
2013	29.04	1.43	7.63	1.13	8.83	48.07
2014	23.70	1.30	7.19	1.20	8.92	42.30
2015	24.67	1.28	7.46	1.20	7.49	42.11
2016	25.03	1.18	7.38	1.20	7.10*	41.89

*Will be updated in January.



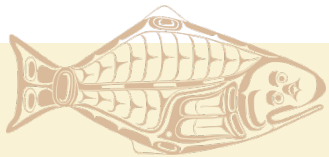
Preliminary 2017 harvest decision table

2017 Alternative	Total removals (M lb)	Fishery CEY (M lb)	Fishing intensity	Stock Trend				Stock Status				Fishery Trend				Fishery Status
				Spawning biomass				Spawning biomass				Fishery CEY from the harvest policy				Harvest rate
				in 2018		in 2020		in 2018		in 2020		in 2018		in 2020		in 2017
				is less than 2017	is 5% less than 2017	is less than 2017	is 5% less than 2017	is less than 30%	is less than 20%	is less than 30%	is less than 20%	is less than 2017	is 10% less than 2017	is less than 2017	is 10% less than 2017	is above target
No removals	0.0	0.0	F _{100%}	<1	<1	<1	<1	3	<1	1	<1	<1	<1	<1	<1	0
FCEY = 0	11.2	0.0	F _{77%} 61%-84%	1	<1	3	<1	3	<1	1	<1	<1	<1	<1	<1	<1
	20.0	8.6	F _{66%} 49%-75%	5	<1	20	4	4	<1	3	<1	<1	<1	<1	<1	<1
	30.0	18.4	F _{55%} 39%-67%	32	<1	53	31	5	<1	6	<1	6	3	8	4	8
Blue Line	37.9	26.1	F _{48%} 33%-62%	56	3	77	53	6	<1	12	<1	47	33	48	39	50
status quo SPR	41.6	29.7	F _{46%} 32%-60%	68	6	87	64	6	<1	15	<1	57	45	57	49	61
	50.0	37.9	F _{40%} 27%-55%	92	29	98	88	7	<1	25	1	94	83	95	86	95
	60.0	47.7	F _{35%} 23%-51%	>99	52	>99	99	9	<1	37	3	>99	>99	>99	>99	>99
				a	b	c	d	e	f	g	h	i	j	k	l	m



FCEY comparison (M lbs net)

	<u>2A</u>	<u>2B</u>	<u>2C</u>	<u>3A</u>	<u>3B</u>	<u>4A</u>	<u>4B</u>	<u>4CDE</u>	<u>Total</u>
2014 Blue Line	0.72	4.98	4.16	9.43	2.84	0.85	0.82	0.64	24.45
2015 Blue Line	0.75	4.96	4.30	10.10	2.46	1.39	0.73	0.52	25.22
2016 Blue Line	1.02	5.22	4.62	9.27	2.71	1.30	0.92	1.64	26.70
2017 Blue Line	0.75	4.72	4.08	9.41	3.08	1.28	1.12	1.69	26.12
2017 <i>status quo</i> SPR	0.84	5.28	4.69	10.72	3.46	1.45	1.25	2.05	29.73
2016 Adopted	1.14	7.30	4.95	9.60	2.71	1.39	1.14	1.66	29.89

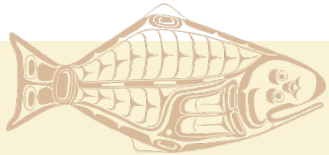


More detail

Dr. Ian Stewart, IPHC chief assessment scientist, will present the “IPHC 2017 Outlook” and take questions on Friday evening.

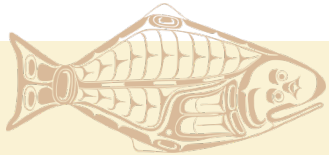
5:30pm in the AP room (Katmai/Dillingham)

All are welcome!



IPHC regulatory proposals for 2017

- Require head-on landed weight and remove 24" head-off minimum size limit (IPHC)
- Remove IPHC Closed Area (IPHC)
- Fishing in multiple regulatory areas (NMFS)
- 13 stakeholder proposals
 - Including several charter management measures likely to be referred to NPFMC



2017 IPHC Annual Meeting (AM093)

- 23-27 January 2017 in Victoria, BC
- All public and administrative sessions open to the public and webcast
- Commission decisions:
 - Catch limits
 - Season dates
 - Regulations
 - Direction to IPHC staff and advisory bodies
- Further details on IPHC website (<http://iphc.int/>)

