

These supplementary images are provided to improve on the resolution of Figures 6 and 8 in the D2 discussion paper, and to better align the information in the images with the figure captions.

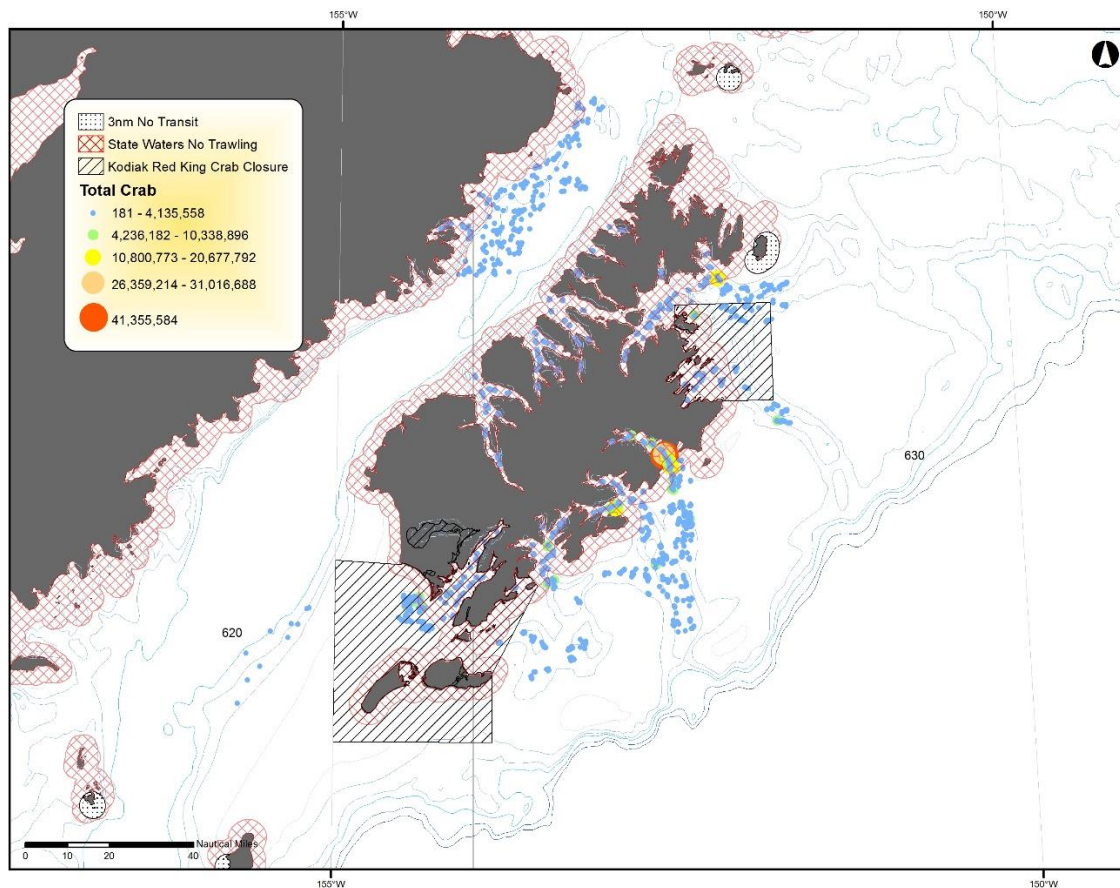


Figure 6. *Tanner crab (all sizes) abundance and distribution around Kodiak Island including existing trawl closure areas (2006 - 2016 combined). Sources: ADF&G , NOAA Fisheries.*

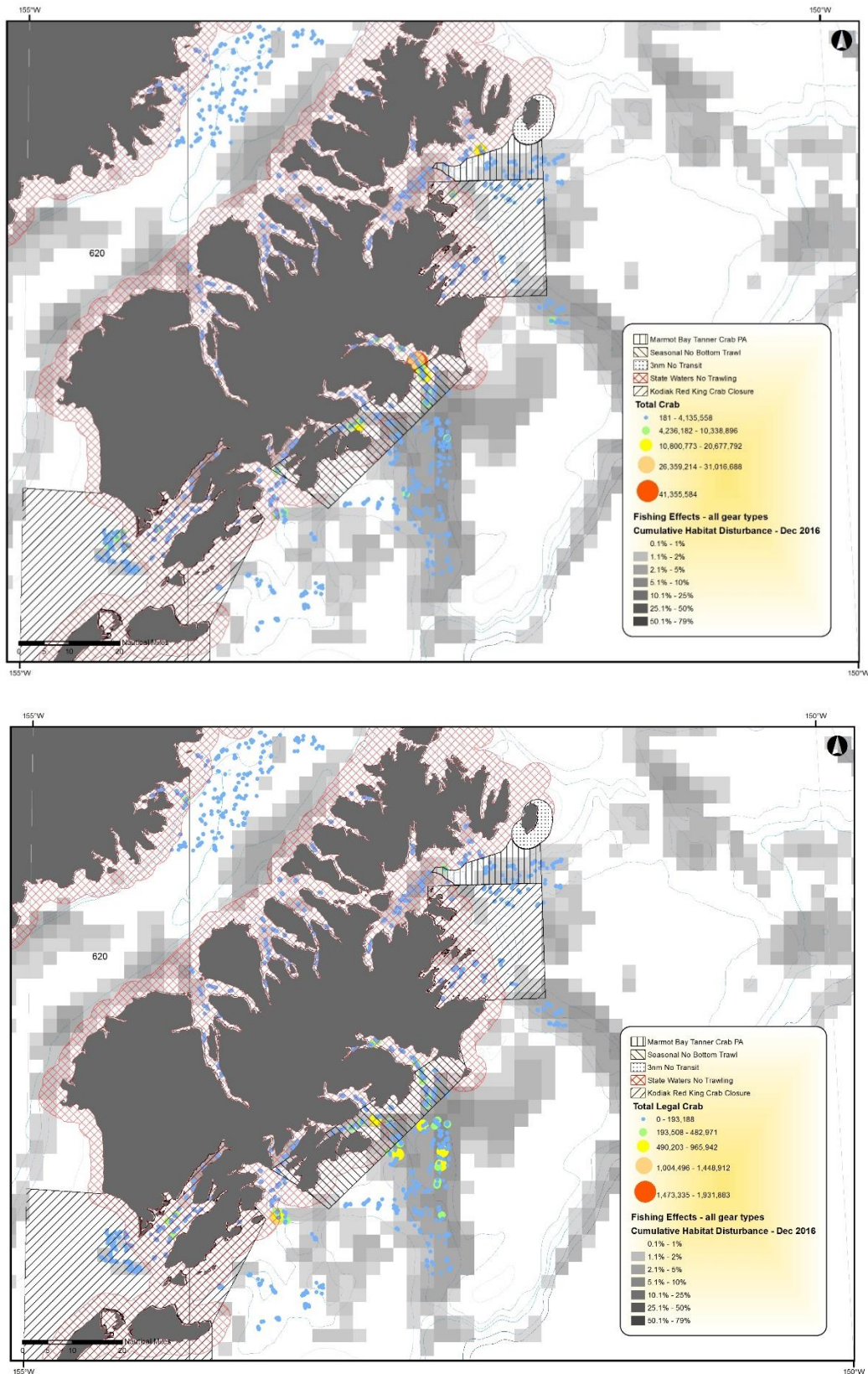


Figure 8. *Distribution of Tanner crab from the ADF&G survey, crab protection closure areas, and the footprint of bottom-contacting fishing gear around Kodiak Island. (All crab – top; legal crab – bottom) Sources: ADF&G, NOAA Fisheries.*