



BSAI Plan Team report

NOAA FISHERIES
Alaska Fisheries
Science Center

Dana Hanselman, co-chair
Grant Thompson, co-chair
Diana Stram, coordinator

December 6, 2016

Team members

- Grant Thompson, co-chair (AFSC REFM)
- Dana Hanselman, co-chair (AFSC ABL)
- Diana Stram, coordinator (NPFMC)
- David Barnard (ADF&G)—last meeting!
- Liz Chilton (AFSC FMA)
- Mary Furuness (NMFS AKRO)
- Alan Haynie (AFSC REFM)
- Allan Hicks (IPHC)—new in September (replacing Clark)
- Kirstin Holsman (AFSC REFM)—new in November (replacing Aydin)
- Brenda Norcross (UAF)
- Chris Siddon (ADF&G)
- Cindy Tribuzio (AFSC ABL)

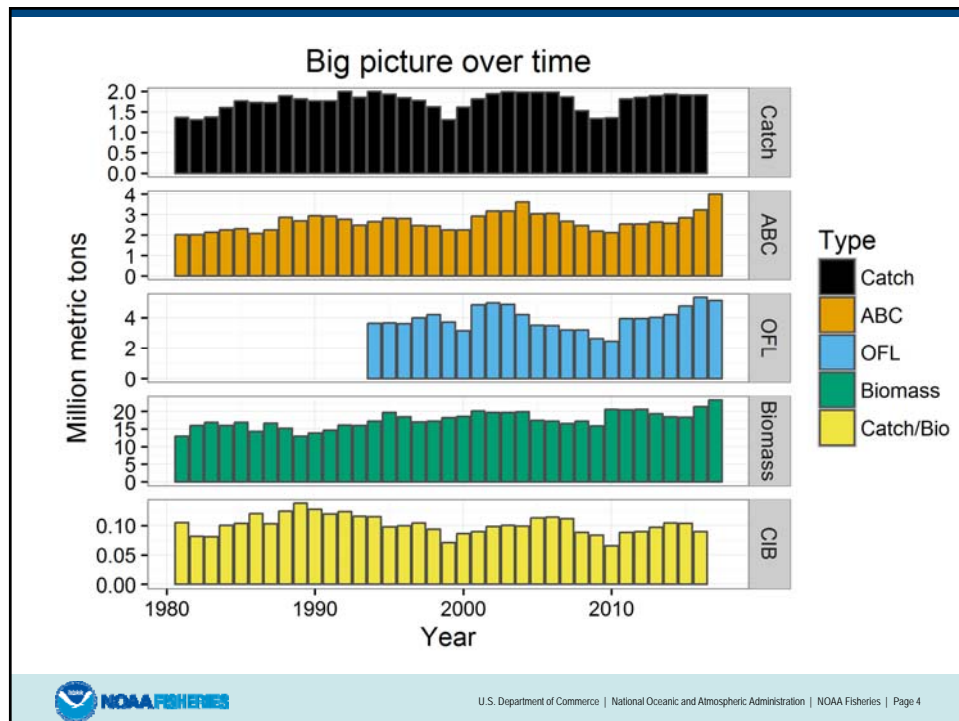


U.S. Department of Commerce | National Oceanic and Atmospheric Administration | NOAA Fisheries | Page 2
This information is distributed solely for the purpose of pre-dissemination peer review under applicable information quality guidelines. It has not been formally disseminated by the National Marine Fisheries Service and should not be construed to represent any agency determination or policy.

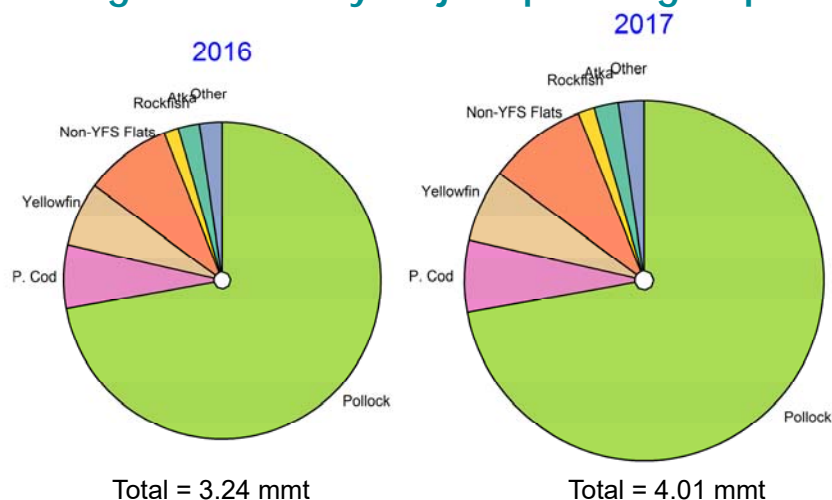
"Big picture" overview



U.S. Department of Commerce | National Oceanic and Atmospheric Administration | NOAA Fisheries | Page 3



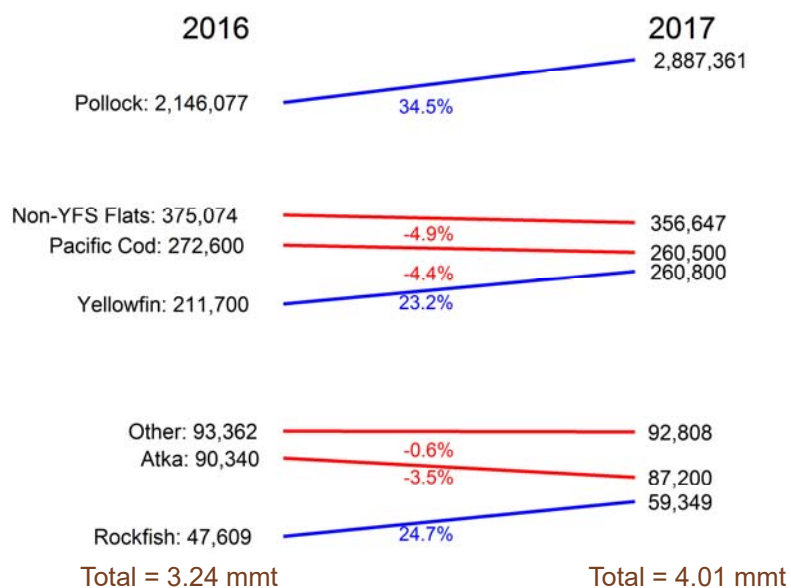
Changes in ABC by major species/groups



NOAA FISHERIES

U.S. Department of Commerce | National Oceanic and Atmospheric Administration | NOAA Fisheries | Page 5
This information is distributed solely for the purpose of pre-dissemination peer review under applicable information quality guidelines. It has not been formally disseminated by the National Marine Fisheries Service and should not be construed to represent any agency determination or policy.

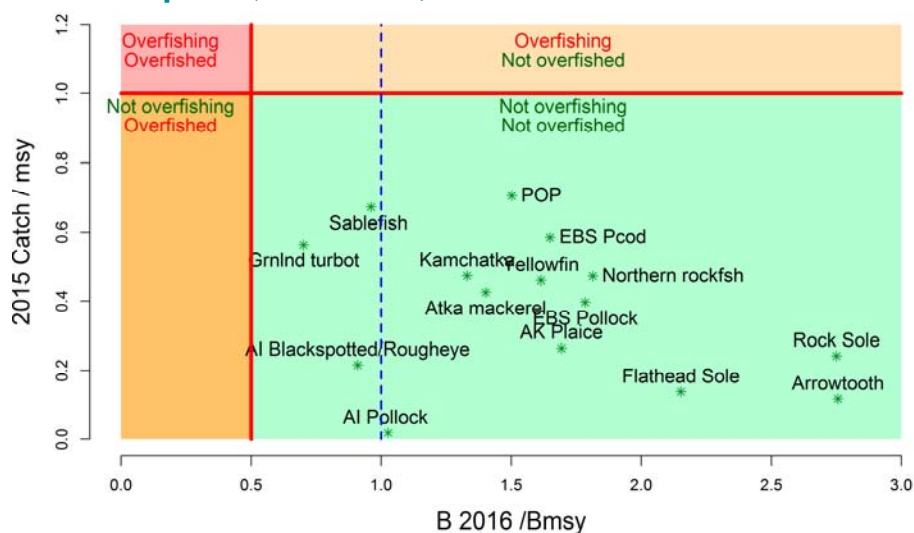
Change in ABC



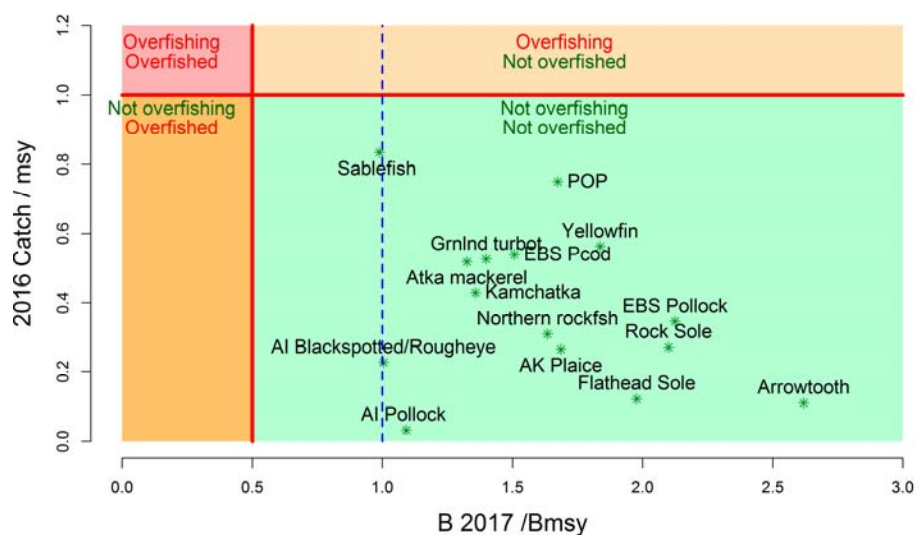
NOAA FISHERIES

U.S. Department of Commerce | National Oceanic and Atmospheric Administration | NOAA Fisheries | Page 6
This information is distributed solely for the purpose of pre-dissemination peer review under applicable information quality guidelines. It has not been formally disseminated by the National Marine Fisheries Service and should not be construed to represent any agency determination or policy.

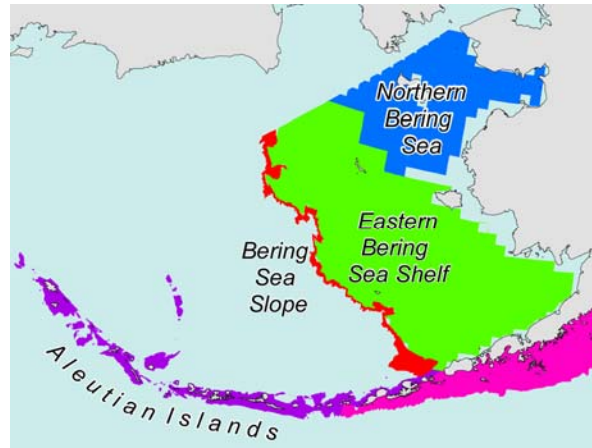
Quad plot (Tiers 1-3): 2015



Quad plot (Tiers 1-3): 2016



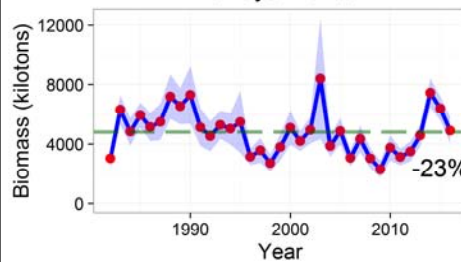
BSAI bottom trawl survey areas



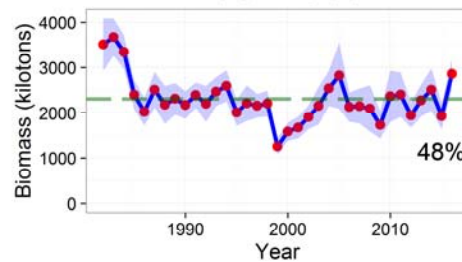
U.S. Department of Commerce | National Oceanic and Atmospheric Administration | NOAA Fisheries | Page 9
This information is distributed solely for the purpose of pre-dissemination peer review under applicable information quality guidelines. It has not been formally disseminated by the National Marine Fisheries Service and should not be construed to represent any agency determination or policy.

EBS Shelf Survey w/ 95% CIs

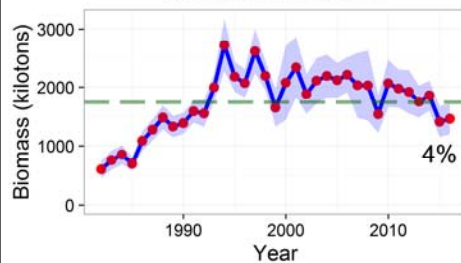
Walleye Pollock



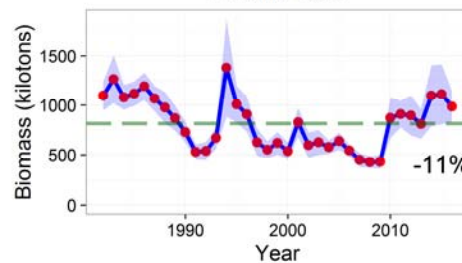
Yellowfin Sole



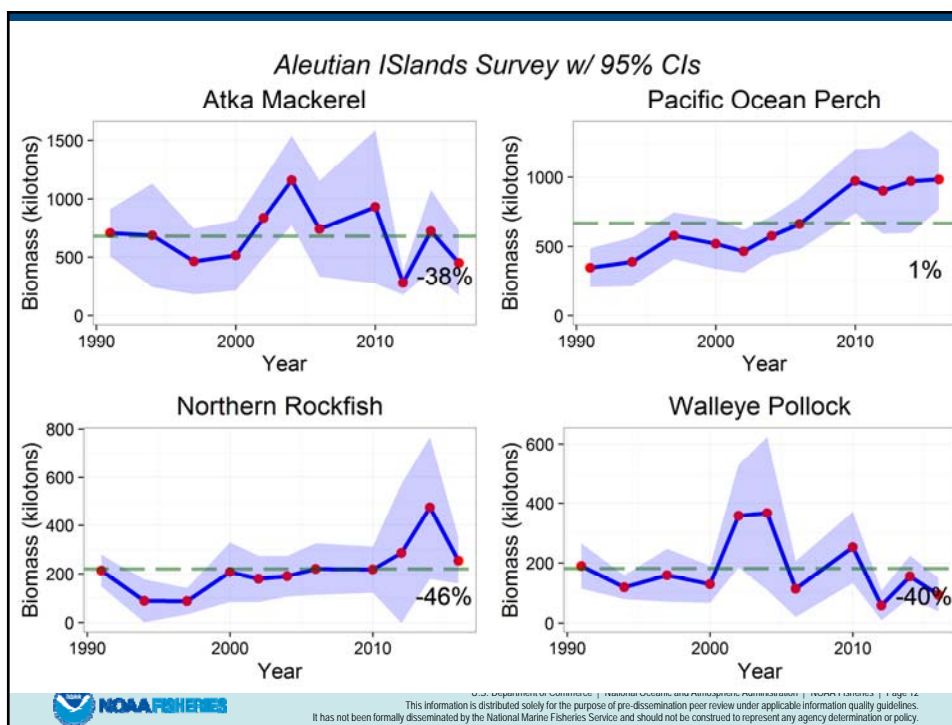
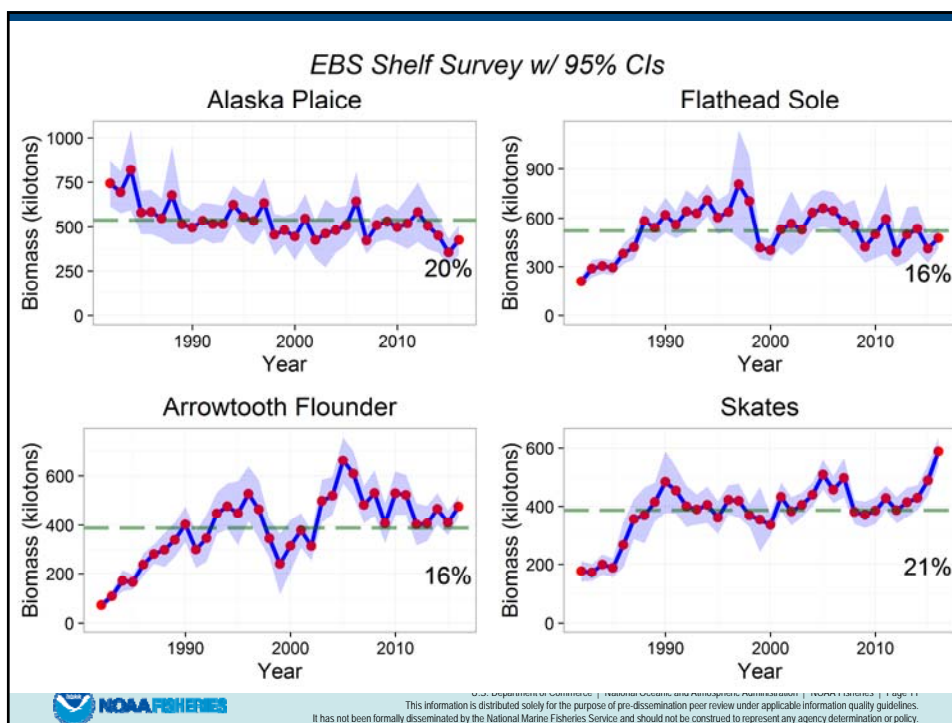
Northern Rock Sole

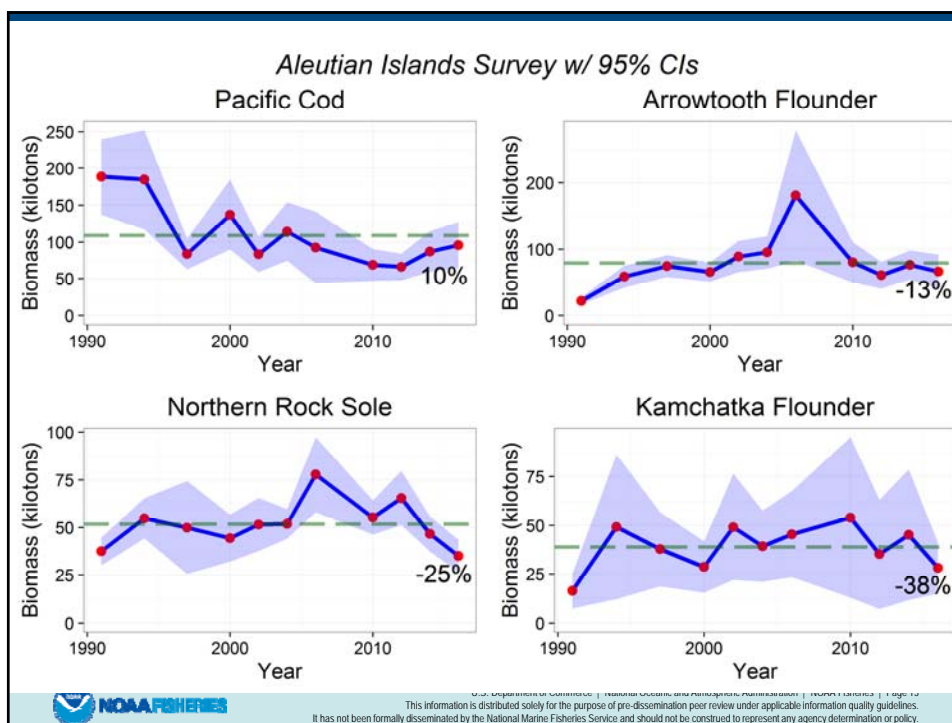


Pacific Cod



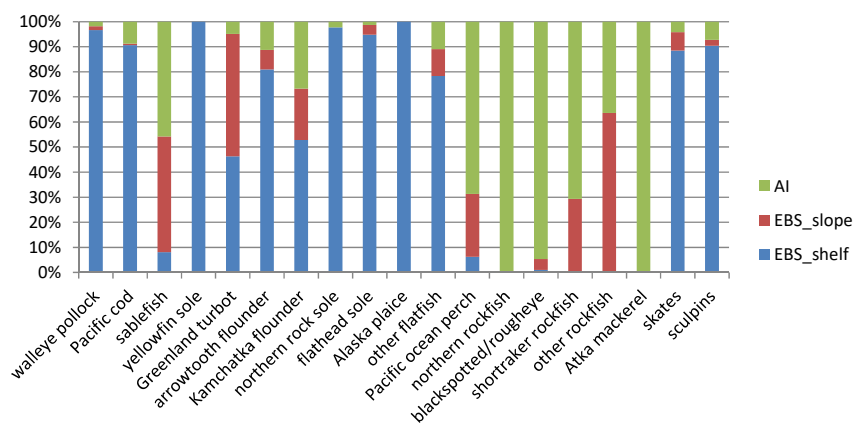
U.S. Department of Commerce | National Oceanic and Atmospheric Administration | NOAA Fisheries | Page 10
This information is distributed solely for the purpose of pre-dissemination peer review under applicable information quality guidelines. It has not been formally disseminated by the National Marine Fisheries Service and should not be construed to represent any agency determination or policy.



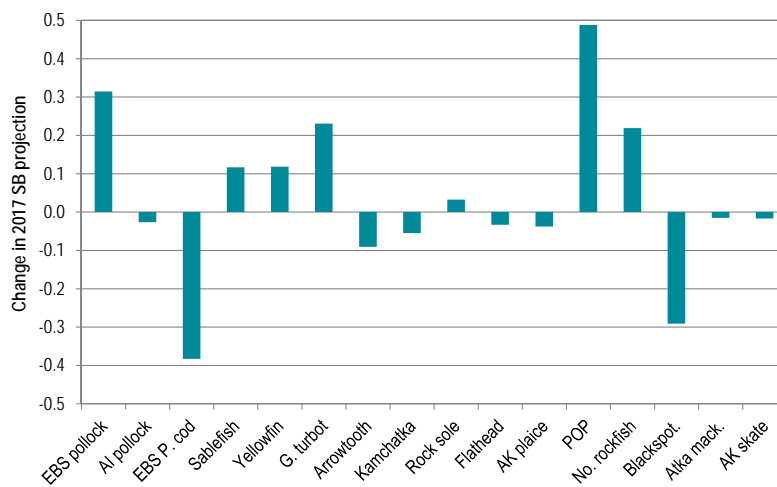


Area survey biomass percentages (2016)

- Not included: sharks, squid, octopus



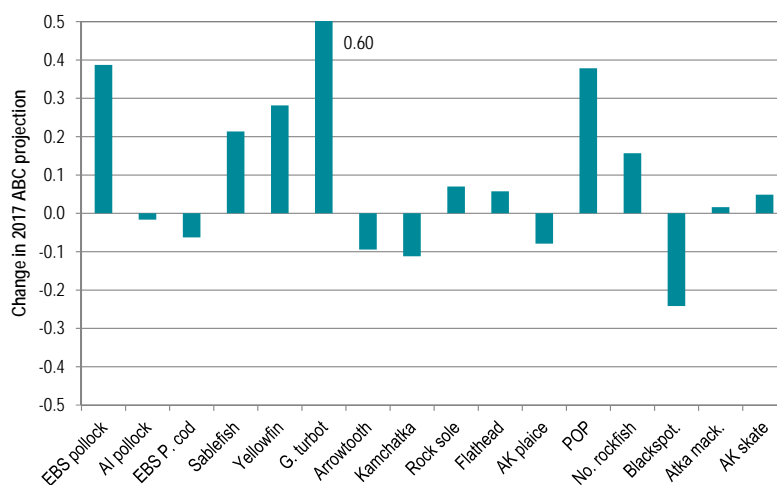
Change in 2017 spawning biomass projection



NOAA FISHERIES

U.S. Department of Commerce | National Oceanic and Atmospheric Administration | NOAA Fisheries | Page 15
This information is distributed solely for the purpose of pre-dissemination peer review under applicable information quality guidelines. It has not been formally disseminated by the National Marine Fisheries Service and should not be construed to represent any agency determination or policy.

Change in 2017 ABC projection



NOAA FISHERIES

U.S. Department of Commerce | National Oceanic and Atmospheric Administration | NOAA Fisheries | Page 16
This information is distributed solely for the purpose of pre-dissemination peer review under applicable information quality guidelines. It has not been formally disseminated by the National Marine Fisheries Service and should not be construed to represent any agency determination or policy.

A few final “big picture” items

- Team agreed with authors' model recommendations in all cases
- Team agreed with authors' ABC recommendations in all cases except Greenland turbot
- ABC recommendations correspond to maximum permissible values in all cases except EBS pollock, Bogoslof pollock, and sablefish
- Of the 16 stocks/complexes in Tiers 1-3, none are in Tier 1b and only 3 (AI pollock, sablefish, and blackspotted/rougheye) are in Tier 3b
- No stocks/complexes were subjected to overfishing in 2015, and no stocks/complexes are overfished or approaching a condition of being overfished as of 2016



U.S. Department of Commerce | National Oceanic and Atmospheric Administration | NOAA Fisheries | Page 17
This information is distributed solely for the purpose of pre-dissemination peer review under applicable information quality guidelines.
It has not been formally disseminated by the National Marine Fisheries Service and should not be construed to represent any agency determination or policy.

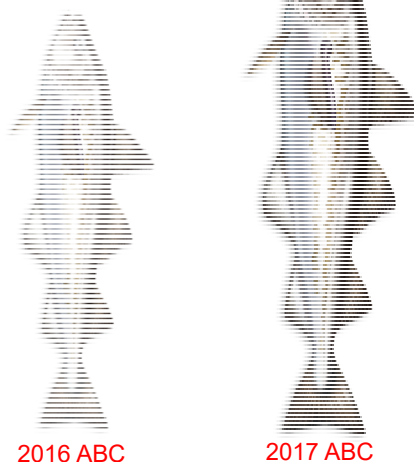
Chapter summaries



U.S. Department of Commerce | National Oceanic and Atmospheric Administration | NOAA Fisheries | Page 18

Chapter 1: EBS walleye pollock

- All you need to know...



NOAA FISHERIES

U.S. Department of Commerce | National Oceanic and Atmospheric Administration | NOAA Fisheries | Page 19
This information is distributed solely for the purpose of pre-dissemination peer review under applicable information quality guidelines. It has not been formally disseminated by the National Marine Fisheries Service and should not be construed to represent any agency determination or policy.

Chapter 1: EBS walleye pollock

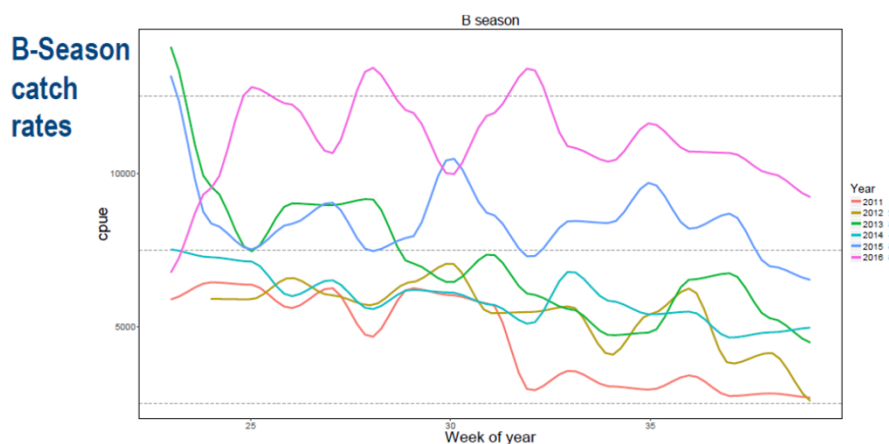
- New survey biomass estimates:
 - EBS shelf survey biomass down 23% from 2015
 - AT survey biomass up 18% from 2014
- CIE review this year
- Model changes:
 - Fit to survey biomass instead of survey abundance (number of fish)
 - Average emphasis given to size and age composition data revised
 - Method for estimating current and future weight at age improved
 - Fuller accounting for structural uncertainty



NOAA FISHERIES

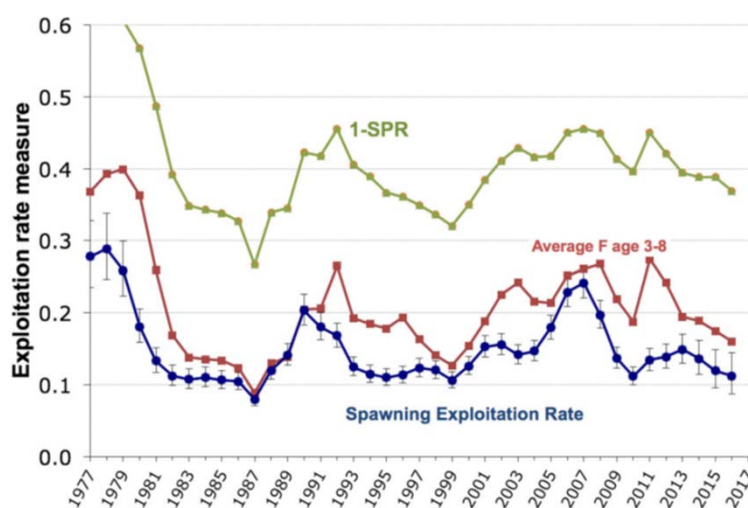
U.S. Department of Commerce | National Oceanic and Atmospheric Administration | NOAA Fisheries | Page 20
This information is distributed solely for the purpose of pre-dissemination peer review under applicable information quality guidelines. It has not been formally disseminated by the National Marine Fisheries Service and should not be construed to represent any agency determination or policy.

EBS walleye pollock, continued



U.S. Department of Commerce | National Oceanic and Atmospheric Administration | NOAA Fisheries | Page 21
This information is distributed solely for the purpose of pre-dissemination peer review under applicable information quality guidelines. It has not been formally disseminated by the National Marine Fisheries Service and should not be construed to represent any agency determination or policy.

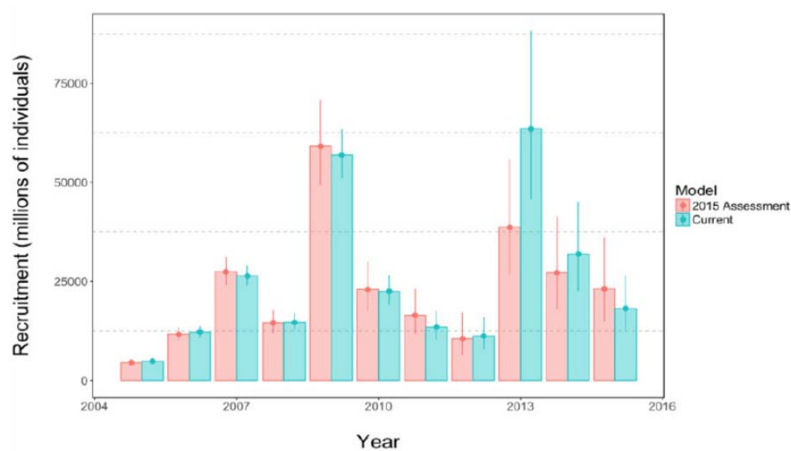
EBS walleye pollock, continued



U.S. Department of Commerce | National Oceanic and Atmospheric Administration | NOAA Fisheries | Page 22
This information is distributed solely for the purpose of pre-dissemination peer review under applicable information quality guidelines. It has not been formally disseminated by the National Marine Fisheries Service and should not be construed to represent any agency determination or policy.

EBS walleye pollock, continued

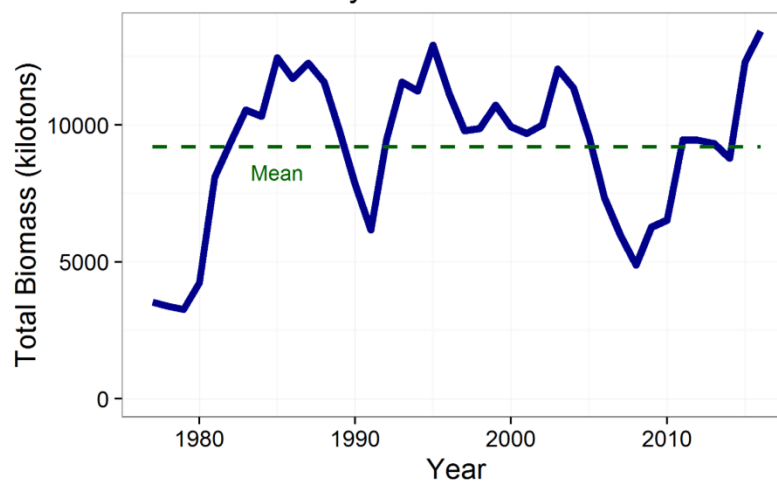
- Age 1 recruitment



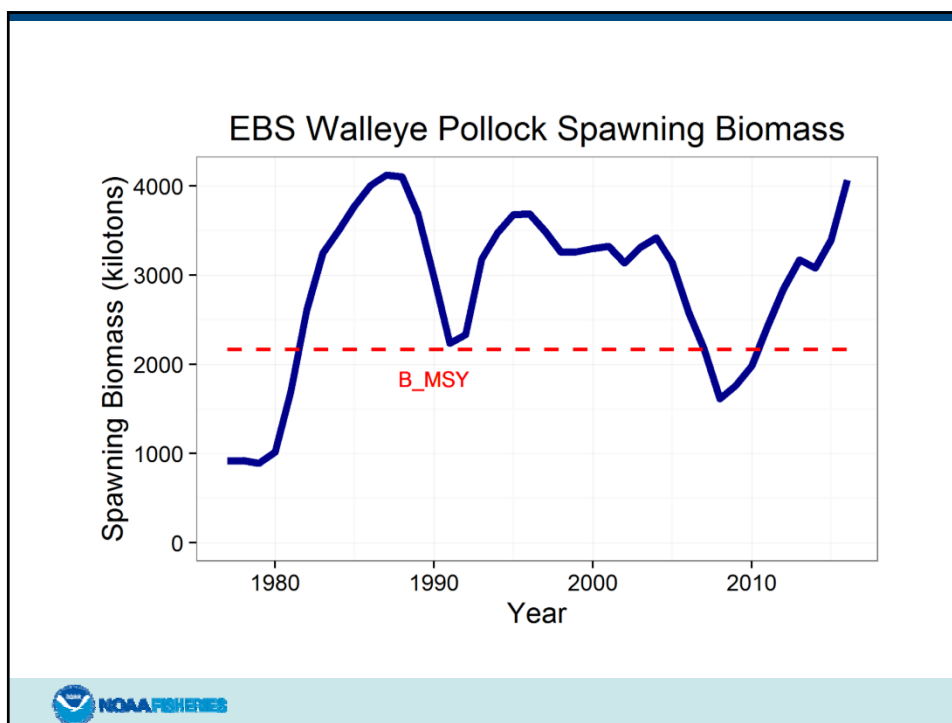
NOAA.FISHERIES

U.S. Department of Commerce | National Oceanic and Atmospheric Administration | NOAA Fisheries | Page 23
This information is distributed solely for the purpose of pre-dissemination peer review under applicable information quality guidelines.
It has not been formally disseminated by the National Marine Fisheries Service and should not be construed to represent any agency determination or policy.

EBS Walleye Pollock Total Biomass



NOAA.FISHERIES



EBS walleye pollock, continued

Quantity	Last year	This year	Change
M	0.30	0.30	0.00
2016 tier	1a	n/a	none
2017 tier	1a	1a	none
2016 age+ biomass	11,300,000	n/a	0.15
2017 age+ biomass	11,000,000	13,000,000	0.18
2016 spawning biomass	3,540,000	n/a	0.30
2017 spawning biomass	3,500,000	4,600,000	0.31
B0	5,676,000	5,700,000	0.00
Bmsy	1,984,000	2,165,000	0.09
2017 FOFL	0.514	0.465	-0.10
2017 FABC	0.401	0.398	-0.01
2016 OFL	3,910,000	n/a	-0.07
2017 OFL	3,540,000	3,640,000	0.03
2016 ABC	2,090,000	n/a	0.34
2017 ABC	2,019,000	2,800,000	0.39



U.S. Department of Commerce | National Oceanic and Atmospheric Administration | NOAA Fisheries | Page 26
 This information is distributed solely for the purpose of pre-dissemination peer review under applicable information quality guidelines.
 It has not been formally disseminated by the National Marine Fisheries Service and should not be construed to represent any agency determination or policy.

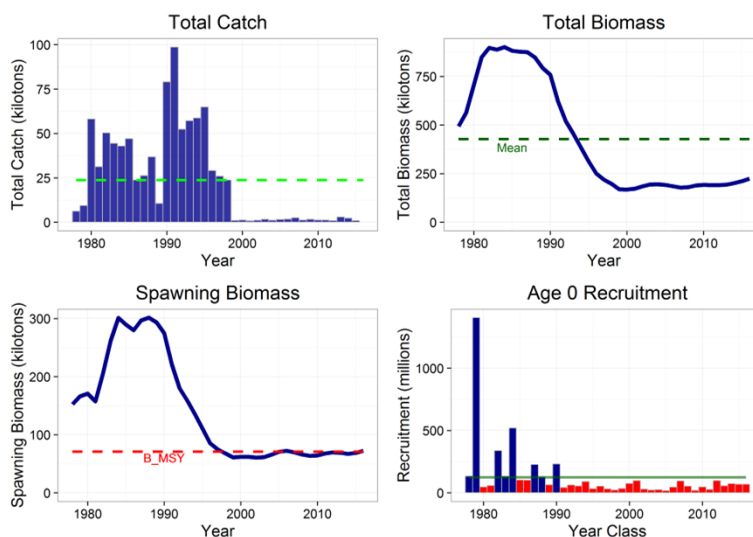
Chapter 1A: AI walleye pollock

- New survey biomass estimates:
 - AI survey biomass down 3% from 2014
- Model changes:
 - None

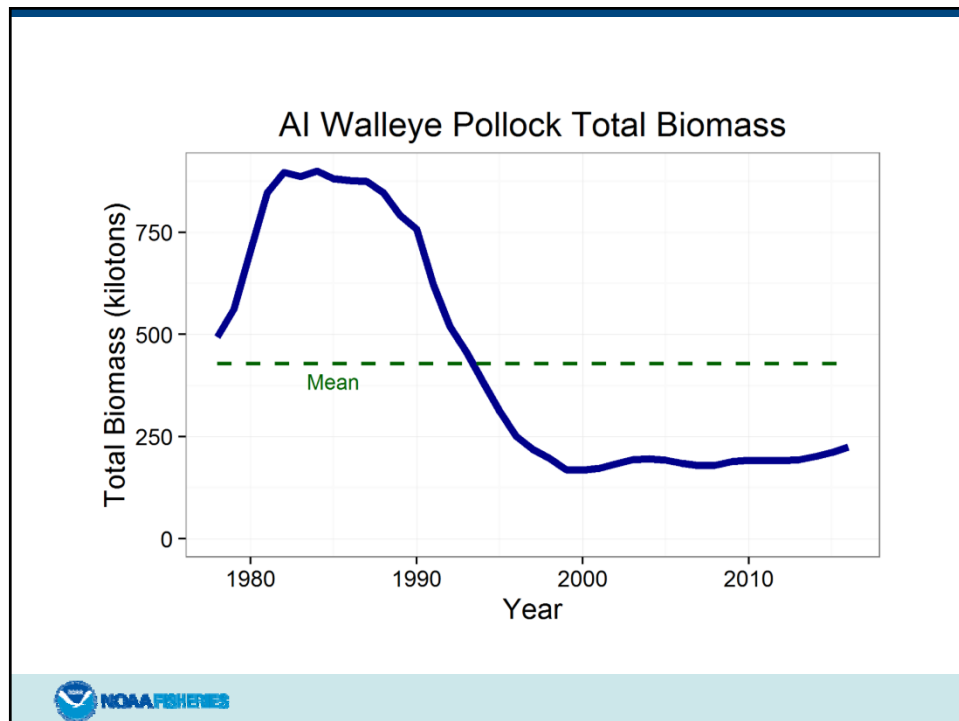
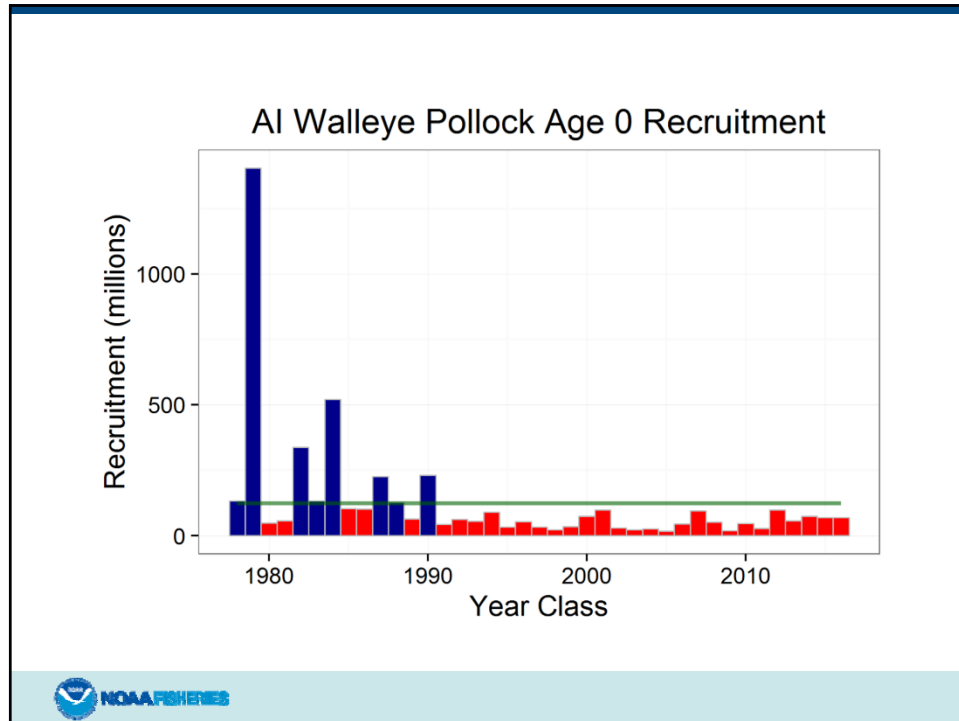


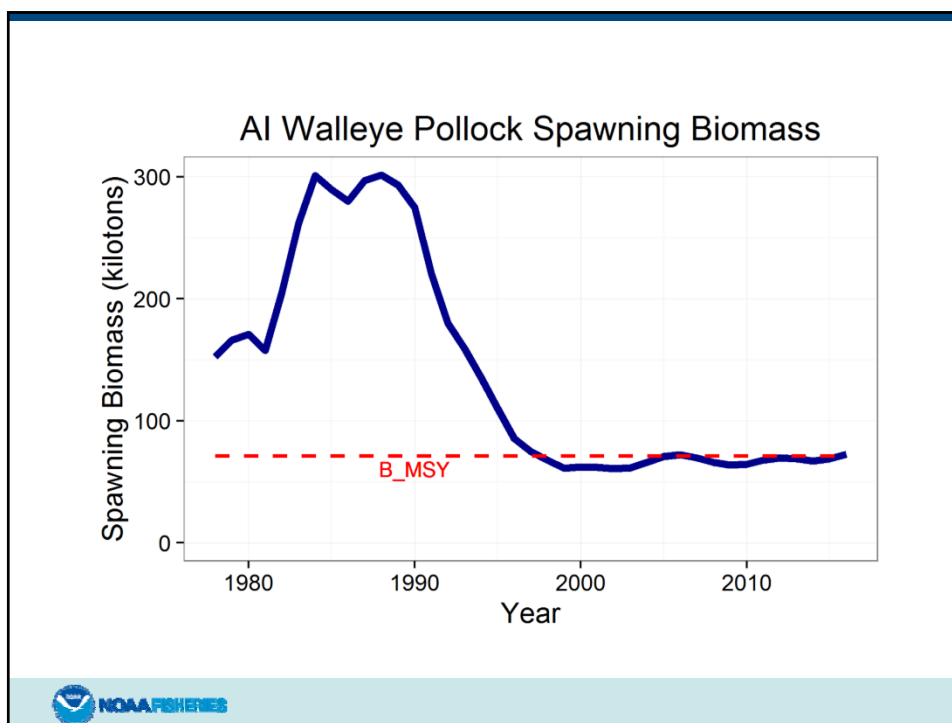
U.S. Department of Commerce | National Oceanic and Atmospheric Administration | NOAA Fisheries | Page 27
This information is distributed solely for the purpose of pre-dissemination peer review under applicable information quality guidelines. It has not been formally disseminated by the National Marine Fisheries Service and should not be construed to represent any agency determination or policy.

AI walleye pollock, continued



U.S. Department of Commerce | National Oceanic and Atmospheric Administration | NOAA Fisheries | Page 28
This information is distributed solely for the purpose of pre-dissemination peer review under applicable information quality guidelines. It has not been formally disseminated by the National Marine Fisheries Service and should not be construed to represent any agency determination or policy.





AI walleye pollock, continued

Quantity	Last year	This year	Change
M	0.18	0.19	0.06
2016 tier	3b	n/a	none
2017 tier	3b	3b	none
2016 age+ biomass	241,929	n/a	0.03
2017 age+ biomass	264,781	250,221	-0.05
2016 spawning biomass	74,377	n/a	0.04
2017 spawning biomass	79,693	77,579	-0.03
B100%	206,962	203,100	-0.02
B40%	82,785	81,240	-0.02
B35%	72,437	71,085	-0.02
2017 FOFL	0.37	0.378	0.02
2017 FABC	0.29	0.304	0.05
2016 OFL	39,075	n/a	0.12
2017 OFL	44,455	43,650	-0.02
2016 ABC	32,227	n/a	0.12
2017 ABC	36,664	36,061	-0.02



U.S. Department of Commerce | National Oceanic and Atmospheric Administration | NOAA Fisheries | Page 32
This information is distributed solely for the purpose of pre-dissemination peer review under applicable information quality guidelines. It has not been formally disseminated by the National Marine Fisheries Service and should not be construed to represent any agency determination or policy.

Chapter 1B: Bogoslof walleye pollock

- New survey biomass estimates:
 - Bogoslof survey biomass up 352% from 2014
- Model changes:
 - None
- ABC recommendation:
 - Maximum permissible ABC based on biomass from standard Tier 5 random effects model
 - Biomass = 434,760 t, ABC = 97,821 t
 - Recommended ABC based on average biomass from 3 most recent surveys
 - Biomass = 228,000 t, ABC = 51,300 t
 - **SSC recommended stairstep (60,800 t)**

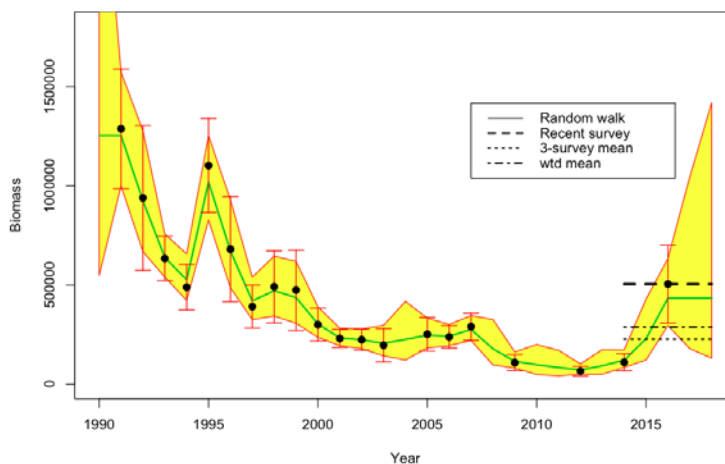


NOAA FISHERIES

U.S. Department of Commerce | National Oceanic and Atmospheric Administration | NOAA Fisheries | Page 33
 This information is distributed solely for the purpose of pre-dissemination peer review under applicable information quality guidelines.
 It has not been formally disseminated by the National Marine Fisheries Service and should not be construed to represent any agency determination or policy.

Bogoslof walleye pollock, continued

- Survey biomass



NOAA FISHERIES

U.S. Department of Commerce | National Oceanic and Atmospheric Administration | NOAA Fisheries | Page 34
 This information is distributed solely for the purpose of pre-dissemination peer review under applicable information quality guidelines.
 It has not been formally disseminated by the National Marine Fisheries Service and should not be construed to represent any agency determination or policy.

Bogoslof walleye pollock, continued

Quantity	Last year	This year	Change
M	0.30	0.30	0.00
2016 tier	5	n/a	none
2017 tier	5	5	none
Biomass	106,000	434,760	3.10
2017 FOFL	0.30	0.30	0.00
2017 FABC	0.225	0.225	0.00
2016 OFL	31,800	n/a	3.10
2017 OFL	31,800	130,428	3.10
2016 ABC	23,850	n/a	1.15
2017 ABC	23,850	51,300	1.15



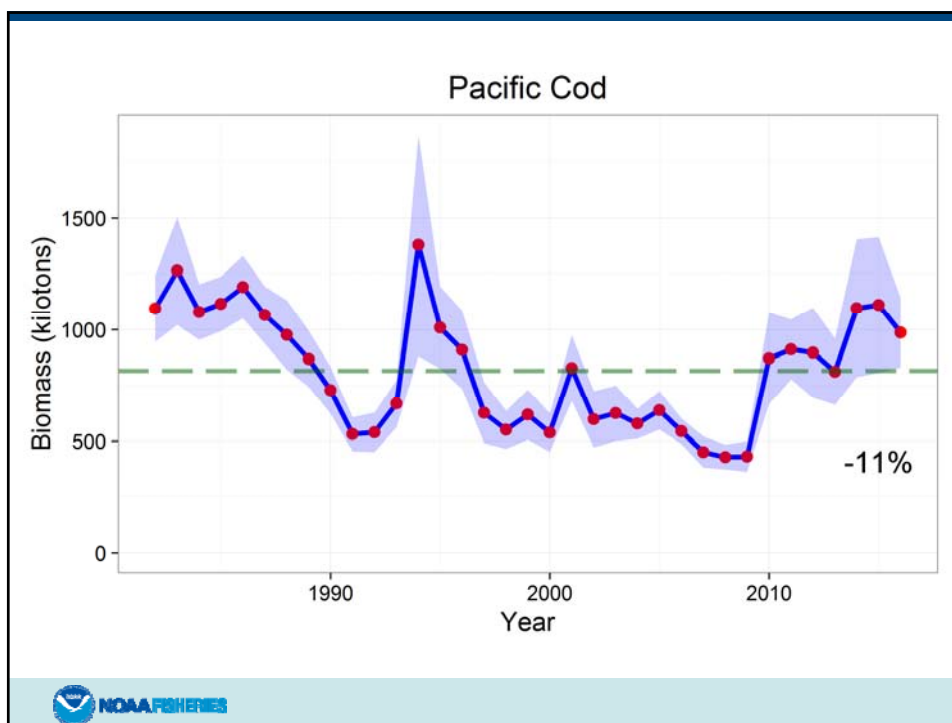
U.S. Department of Commerce | National Oceanic and Atmospheric Administration | NOAA Fisheries | Page 35
This information is distributed solely for the purpose of pre-dissemination peer review under applicable information quality guidelines. It has not been formally disseminated by the National Marine Fisheries Service and should not be construed to represent any agency determination or policy.

Chapter 2: EBS Pacific cod

- New survey biomass estimates:
 - EBS shelf survey biomass down 11% from 2015
- CIE review this year; many suggestions for model changes
 - Base model was unchanged since 2011
- Model changes:
 - Much simpler model structure in general
 - One season per year, all gears combined into one fishery
 - Natural mortality rate estimated inside the model (slightly higher)
 - Survey catchability estimated inside the model (higher)
 - Flat-topped selectivity for fishery and survey (no "domes")
 - Selectivity constant over time for fishery and survey
 - Several minor changes

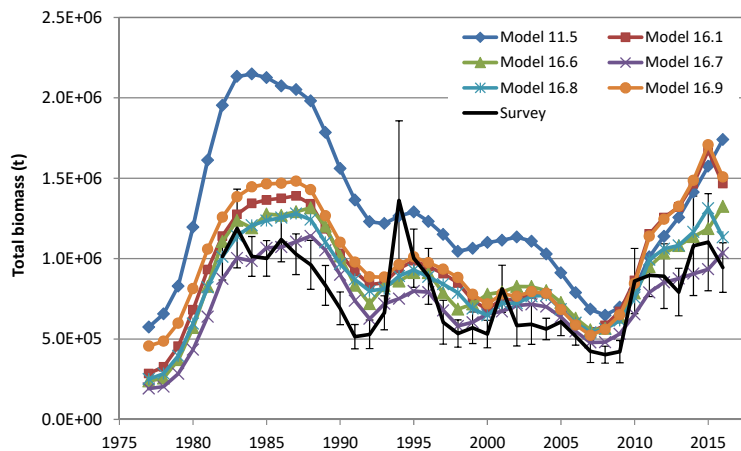


U.S. Department of Commerce | National Oceanic and Atmospheric Administration | NOAA Fisheries | Page 36
This information is distributed solely for the purpose of pre-dissemination peer review under applicable information quality guidelines. It has not been formally disseminated by the National Marine Fisheries Service and should not be construed to represent any agency determination or policy.



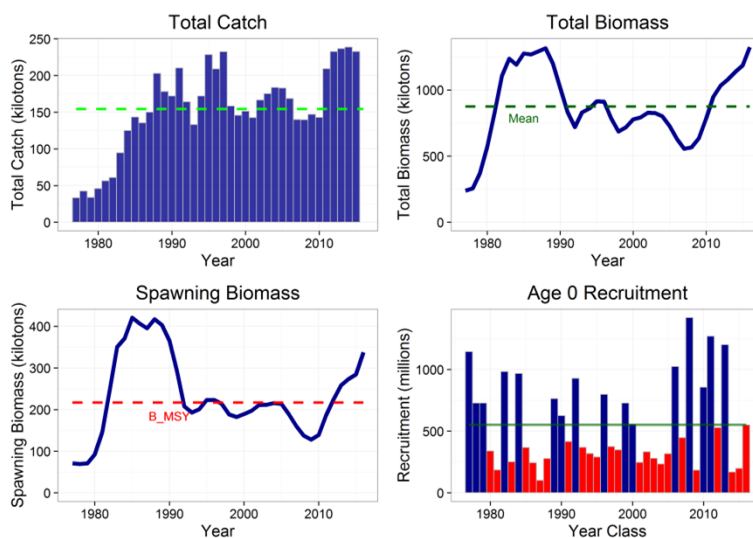
EBS Pacific cod, continued

- Old model = blue diamonds, new model = green triangles



U.S. Department of Commerce | National Oceanic and Atmospheric Administration | NOAA Fisheries | Page 38
This information is distributed solely for the purpose of pre-dissemination peer review under applicable information quality guidelines.
It has not been formally disseminated by the National Marine Fisheries Service and should not be construed to represent any agency determination or policy.

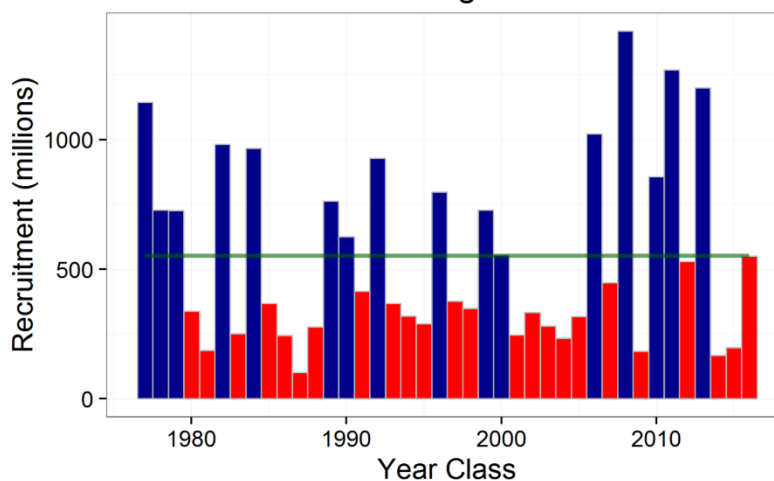
EBS Pacific cod, continued



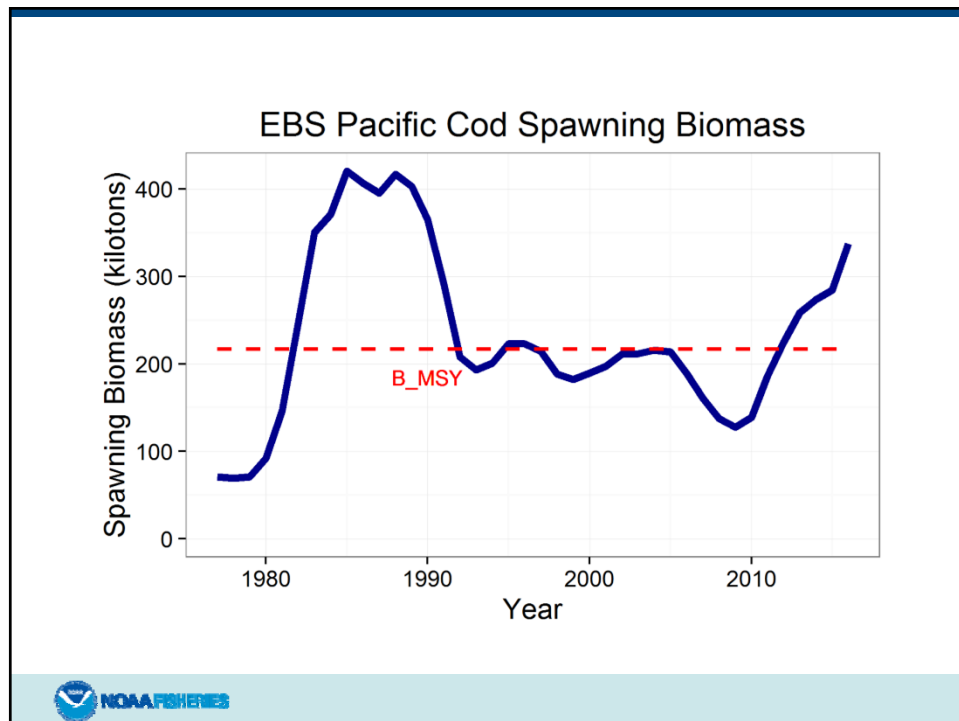
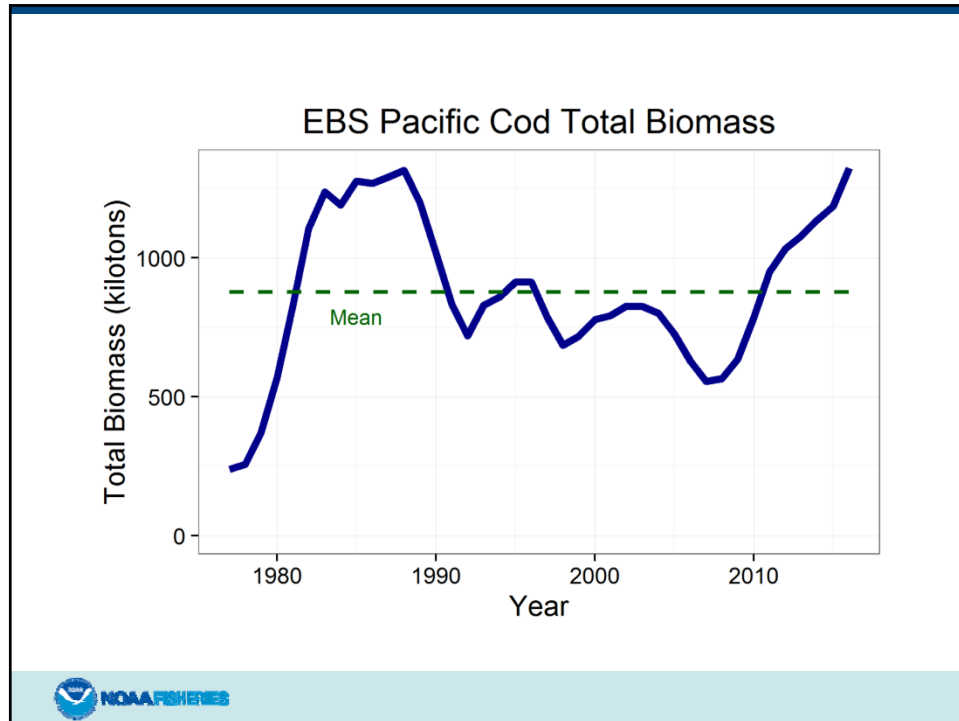
NOAA FISHERIES

U.S. Department of Commerce | National Oceanic and Atmospheric Administration | NOAA Fisheries | Page 39
This information is distributed solely for the purpose of pre-dissemination peer review under applicable information quality guidelines. It has not been formally disseminated by the National Marine Fisheries Service and should not be construed to represent any agency determination or policy.

EBS Pacific Cod Age 0 Recruitment



NOAA FISHERIES



EBS Pacific cod, continued

Quantity	Last year	This year	Change
M	0.34	0.36	0.06
2016 tier	3a	n/a	none
2017 tier	3a	3a	none
2016 age+ biomass	1,830,000	n/a	-0.31
2017 age+ biomass	1,780,000	1,260,000	-0.29
2016 spawning biomass	466,000	n/a	-0.30
2017 spawning biomass	530,000	327,000	-0.38
B100%	806,000	620,000	-0.23
B40%	323,000	248,000	-0.23
B35%	282,000	217,000	-0.23
2017 FOFL	0.35	0.38	0.09
2017 FABC	0.22	0.31	0.41
2016 OFL	390,000	n/a	-0.27
2017 OFL	412,000	284,000	-0.31
2016 ABC	255,000	n/a	-0.06
2017 ABC	255,000	239,000	-0.06



NOAA FISHERIES

U.S. Department of Commerce | National Oceanic and Atmospheric Administration | NOAA Fisheries | Page 43
This information is distributed solely for the purpose of pre-dissemination peer review under applicable information quality guidelines. It has not been formally disseminated by the National Marine Fisheries Service and should not be construed to represent any agency determination or policy.

Chapter 2A: AI Pacific cod

- New survey biomass estimates:
 - AI survey biomass up 15% from 2014
- Model changes:
 - None

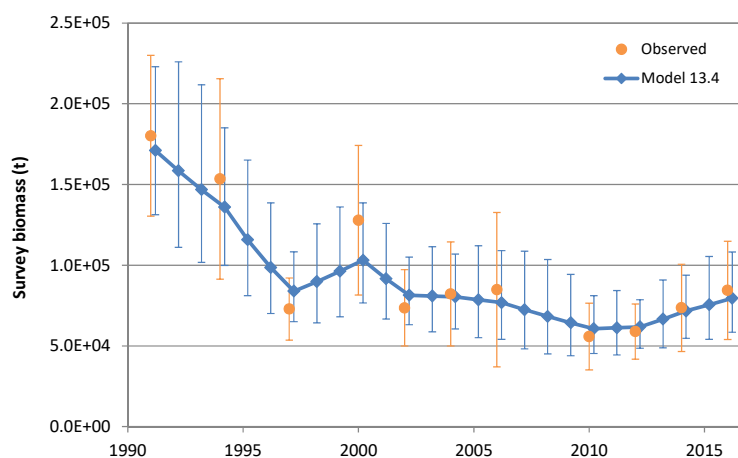


NOAA FISHERIES

U.S. Department of Commerce | National Oceanic and Atmospheric Administration | NOAA Fisheries | Page 44
This information is distributed solely for the purpose of pre-dissemination peer review under applicable information quality guidelines. It has not been formally disseminated by the National Marine Fisheries Service and should not be construed to represent any agency determination or policy.

AI Pacific cod, continued

- Survey biomass



NOAA FISHERIES

U.S. Department of Commerce | National Oceanic and Atmospheric Administration | NOAA Fisheries | Page 45
This information is distributed solely for the purpose of pre-dissemination peer review under applicable information quality guidelines. It has not been formally disseminated by the National Marine Fisheries Service and should not be construed to represent any agency determination or policy.

AI Pacific cod, continued

Quantity	Last year	This year	Change
M	0.34	0.36	0.06
2016 tier	5	n/a	none
2017 tier	5	5	none
Biomass	68,900	79,600	0.16
2017 FOFL	0.34	0.36	0.06
2017 FABC	0.26	0.27	0.04
2016 OFL	23,400	n/a	0.23
2017 OFL	23,400	28,700	0.23
2016 ABC	17,600	n/a	0.22
2017 ABC	17,600	21,500	0.22

- If last year's value of M were retained, the 2017 OFL would be 27,100 t and the 2017 ABC would be 20,300 t (16% increases)



NOAA FISHERIES

U.S. Department of Commerce | National Oceanic and Atmospheric Administration | NOAA Fisheries | Page 46
This information is distributed solely for the purpose of pre-dissemination peer review under applicable information quality guidelines. It has not been formally disseminated by the National Marine Fisheries Service and should not be construed to represent any agency determination or policy.

Chapter 3: sablefish

- Covered in GOA Team presentation (Thanks Jon!)

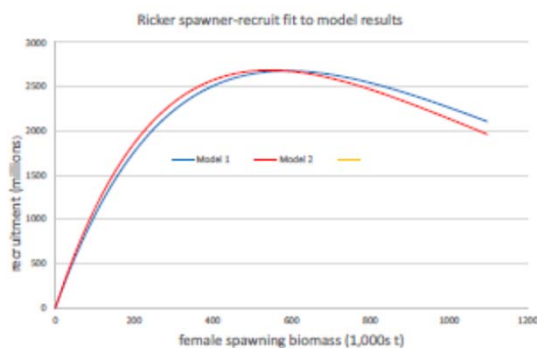
Quantity	Last year	This year	Change
M	0.10	0.097	-0.03
2016 tier	3b	n/a	none
2017 tier	3b	3b	none
2016 age+ biomass	204,796	n/a	0.17
2017 age+ biomass	214,552	239,244	0.12
2016 spawning biomass	86,471	n/a	0.06
2017 spawning biomass	81,986	91,553	0.12
B100%	257,018	264,590	0.03
B40%	102,807	105,836	0.03
B35%	89,956	92,606	0.03
2017 FOFL	0.086	0.097	0.13
2017 FABC	0.073	0.078	0.07
2016 OFL	13,397	n/a	0.19
2017 OFL	12,747	15,931	0.25
2016 ABC	11,795	n/a	0.11
2017 ABC	10,782	13,083	0.21



U.S. Department of Commerce | National Oceanic and Atmospheric Administration | NOAA Fisheries | Page 47
This information is distributed solely for the purpose of pre-dissemination peer review under applicable information quality guidelines. It has not been formally disseminated by the National Marine Fisheries Service and should not be construed to represent any agency determination or policy.

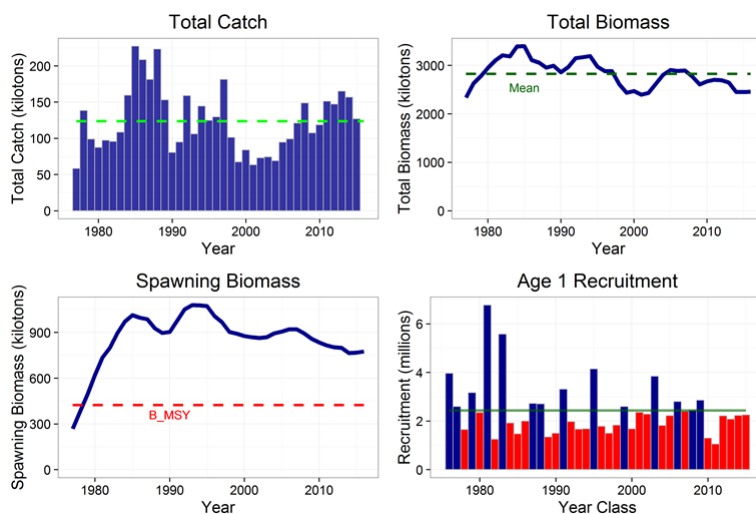
Chapter 4: yellowfin sole

- New survey biomass estimates:
 - EBS shelf biomass estimate for 2016 up 48% from 2015
- Model changes:
 - Revised fishery weight at age for 2008-14



U.S. Department of Commerce | National Oceanic and Atmospheric Administration | NOAA Fisheries | Page 48
This information is distributed solely for the purpose of pre-dissemination peer review under applicable information quality guidelines. It has not been formally disseminated by the National Marine Fisheries Service and should not be construed to represent any agency determination or policy.

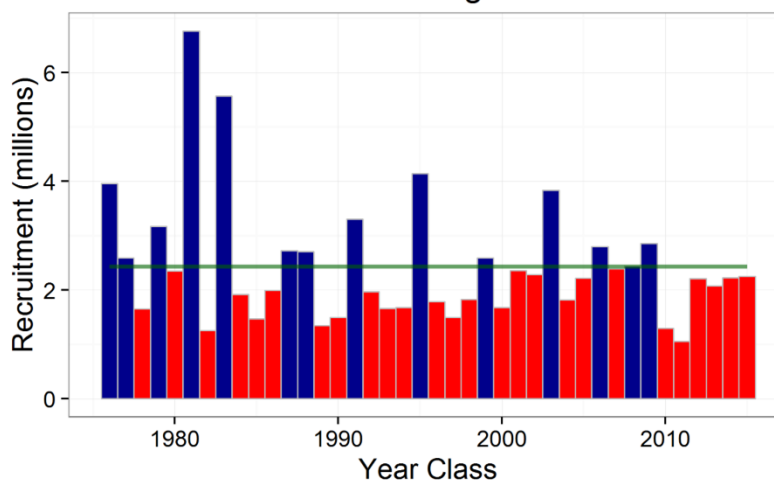
Yellowfin sole, continued



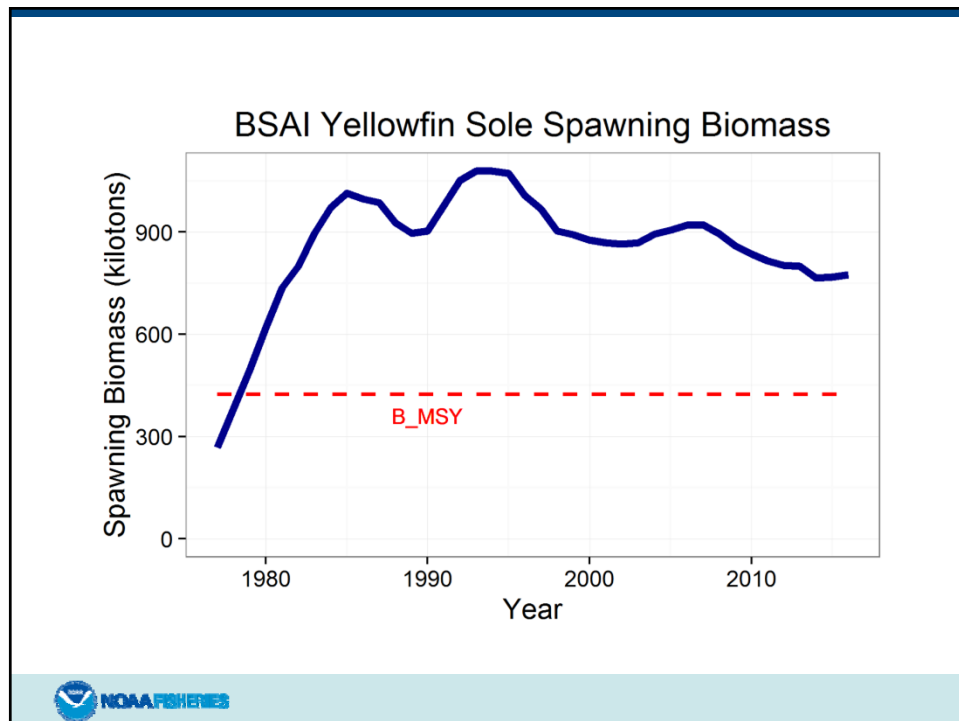
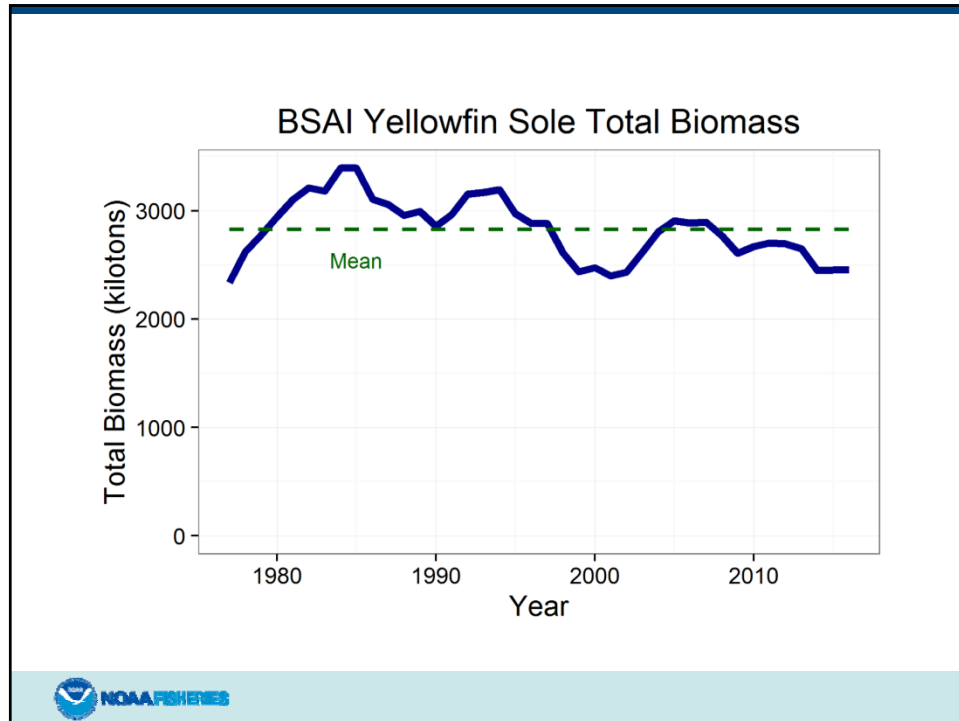
NOAA FISHERIES

U.S. Department of Commerce | National Oceanic and Atmospheric Administration | NOAA Fisheries | Page 49
This information is distributed solely for the purpose of pre-dissemination peer review under applicable information quality guidelines. It has not been formally disseminated by the National Marine Fisheries Service and should not be construed to represent any agency determination or policy.

BSAI Yellowfin Sole Age 1 Recruitment



NOAA FISHERIES



Yellowfin sole, continued

Quantity	Last year	This year	Change
M	0.12	0.12	0.00
2016 tier	1a	n/a	none
2017 tier	1a	1a	none
2016 age+ biomass	2,170,000	n/a	0.06
2017 age+ biomass	2,086,200	2,290,100	0.10
2016 spawning biomass	702,200	n/a	0.11
2017 spawning biomass	696,200	778,600	0.12
B0	1,107,000	1,202,700	0.09
Bmsy	435,000	424,000	-0.03
2017 FOFL	0.105	0.125	0.19
2017 FABC	0.098	0.114	0.16
2016 OFL	228,100	n/a	0.26
2017 OFL	219,200	287,000	0.31
2016 ABC	211,700	n/a	0.23
2017 ABC	203,500	260,800	0.28



U.S. Department of Commerce | National Oceanic and Atmospheric Administration | NOAA Fisheries | Page 53
 This information is distributed solely for the purpose of pre-dissemination peer review under applicable information quality guidelines.
 It has not been formally disseminated by the National Marine Fisheries Service and should not be construed to represent any agency determination or policy.

Chapter 5: Greenland turbot

- New survey biomass estimates:
 - EBS shelf survey down 11% from 2015
 - EBS slope survey up 31% from 2012
 - 2016 distribution of survey biomass: 49% shelf, 51% slope
- Model changes:
 - Size composition data combined across sexes for sizes < 50 cm
 - Separate set of slope survey selectivity parameters for years > 2010
 - Flat-topped slope survey selectivity
 - NMFS longline survey data removed



U.S. Department of Commerce | National Oceanic and Atmospheric Administration | NOAA Fisheries | Page 54
 This information is distributed solely for the purpose of pre-dissemination peer review under applicable information quality guidelines.
 It has not been formally disseminated by the National Marine Fisheries Service and should not be construed to represent any agency determination or policy.

Greenland turbot, continued

- ABC recommendation:
 - The Team disagreed with the authors' recommended ABC of 7,000 t
 - While the Team agreed that capping harvests at the 7,000 t level would likely result in less variable future harvests and keep the stock above $B_{35\%}$, the Team felt that these were more appropriately viewed as TAC considerations than ABC considerations, and so proposed setting ABC at the maximum permissible level instead
 - The SSC recommended a stairstep (halfway up)



NOAA FISHERIES

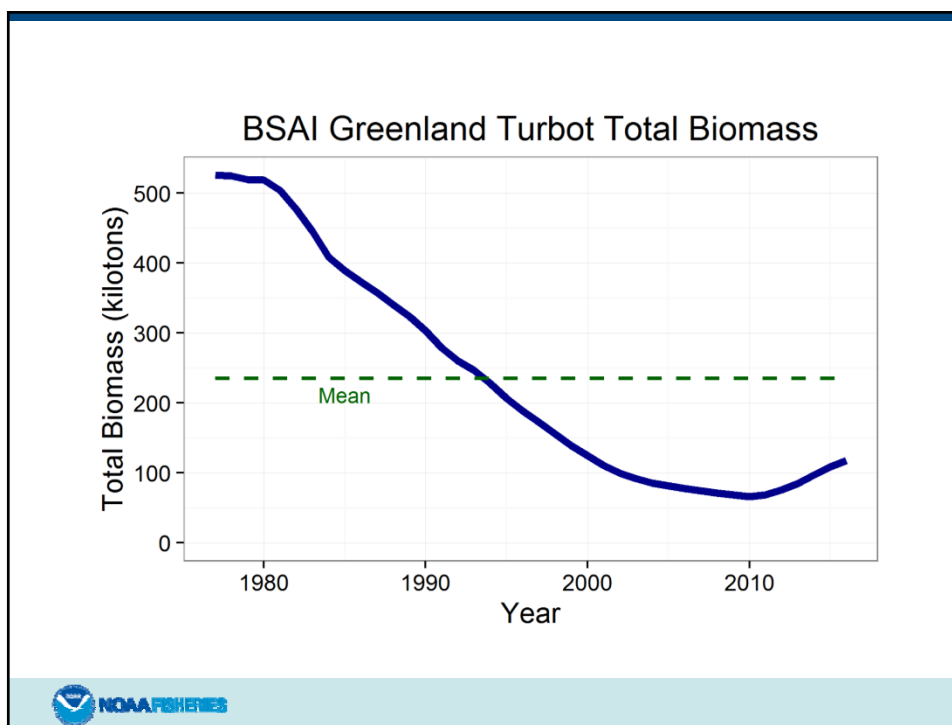
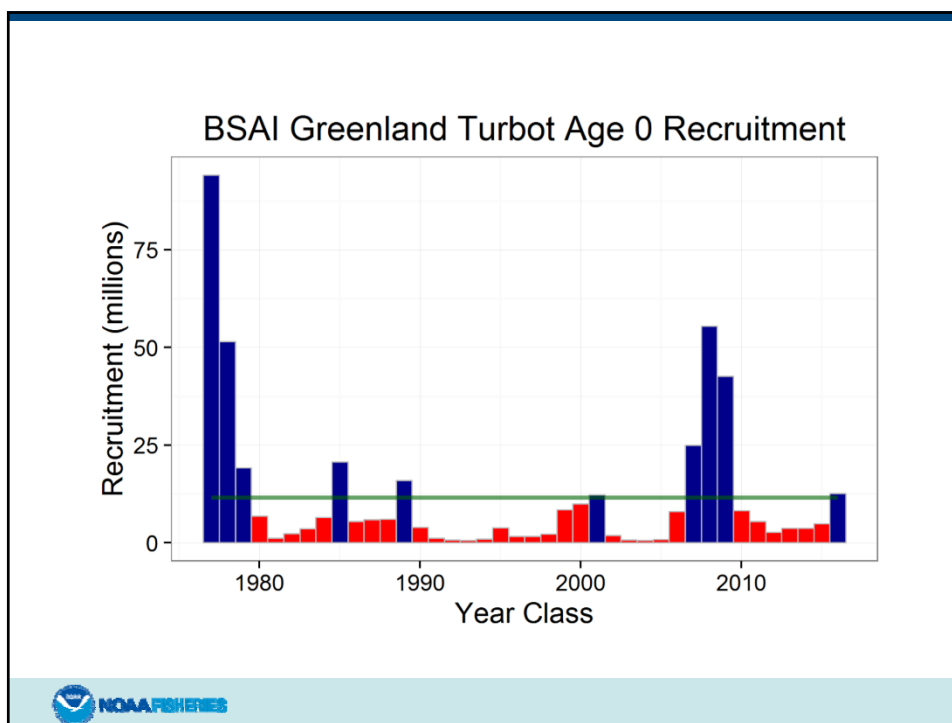
U.S. Department of Commerce | National Oceanic and Atmospheric Administration | NOAA Fisheries | Page 55
This information is distributed solely for the purpose of pre-dissemination peer review under applicable information quality guidelines. It has not been formally disseminated by the National Marine Fisheries Service and should not be construed to represent any agency determination or policy.

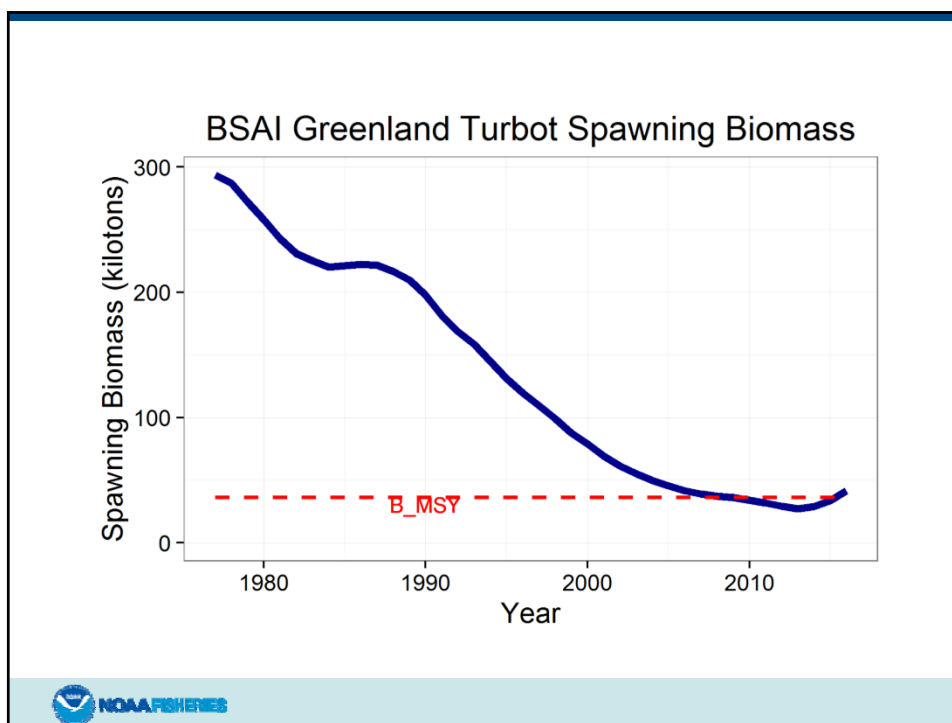
Greenland turbot, continued



NOAA FISHERIES

U.S. Department of Commerce | National Oceanic and Atmospheric Administration | NOAA Fisheries | Page 56
This information is distributed solely for the purpose of pre-dissemination peer review under applicable information quality guidelines. It has not been formally disseminated by the National Marine Fisheries Service and should not be construed to represent any agency determination or policy.





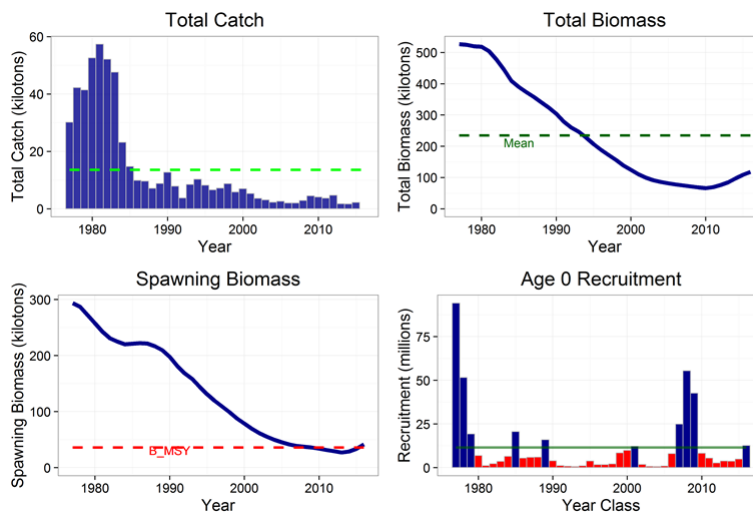
Greenland turbot, continued

Quantity	Last year	This year	Change
M	0.112	0.112	0.00
2016 tier	3b	n/a	3b→3a
2017 tier	3b	3a	3b→3a
2016 age+ biomass	114,438	n/a	0.06
2017 age+ biomass	123,494	121,804	-0.01
2016 spawning biomass	31,028	n/a	0.63
2017 spawning biomass	41,015	50,461	0.23
B100%	126,441	103,097	-0.18
B40%	50,577	41,239	-0.18
B35%	44,255	36,084	-0.18
2017 FOFL	0.14	0.29	1.07
2017 FABC	0.11	0.18	0.64
2016 OFL	4,194	n/a	1.77
2017 OFL	7,416	11,615	0.57
2016 ABC	3,462	n/a	1.84
2017 ABC	6,132	9,825	0.60



U.S. Department of Commerce | National Oceanic and Atmospheric Administration | NOAA Fisheries | Page 60
 This information is distributed solely for the purpose of pre-dissemination peer review under applicable information quality guidelines.
 It has not been formally disseminated by the National Marine Fisheries Service and should not be construed to represent any agency determination or policy.

Greenland turbot, continued



NOAA FISHERIES

U.S. Department of Commerce | National Oceanic and Atmospheric Administration | NOAA Fisheries | Page 61
This information is distributed solely for the purpose of pre-dissemination peer review under applicable information quality guidelines. It has not been formally disseminated by the National Marine Fisheries Service and should not be construed to represent any agency determination or policy.

Greenland turbot, continued

Quantity	Last year	This year	Change
M	0.112	0.112	0.00
2016 tier	3b	n/a	3b→3a
2017 tier	3b	3a	3b→3a
2016 age+ biomass	114,438	n/a	0.06
2017 age+ biomass	123,494	121,804	-0.01
2016 spawning biomass	31,028	n/a	0.63
2017 spawning biomass	41,015	50,461	0.23
B100%	126,441	103,097	-0.18
B40%	50,577	41,239	-0.18
B35%	44,255	36,084	-0.18
2017 FOFL	0.14	0.29	1.07
2017 FABC	0.11	0.18	0.64
2016 OFL	4,194	n/a	1.77
2017 OFL	7,416	11,615	0.57
2016 ABC	3,462	n/a	1.84
2017 ABC	6,132	9,825	0.60



NOAA FISHERIES

U.S. Department of Commerce | National Oceanic and Atmospheric Administration | NOAA Fisheries | Page 62
This information is distributed solely for the purpose of pre-dissemination peer review under applicable information quality guidelines. It has not been formally disseminated by the National Marine Fisheries Service and should not be construed to represent any agency determination or policy.

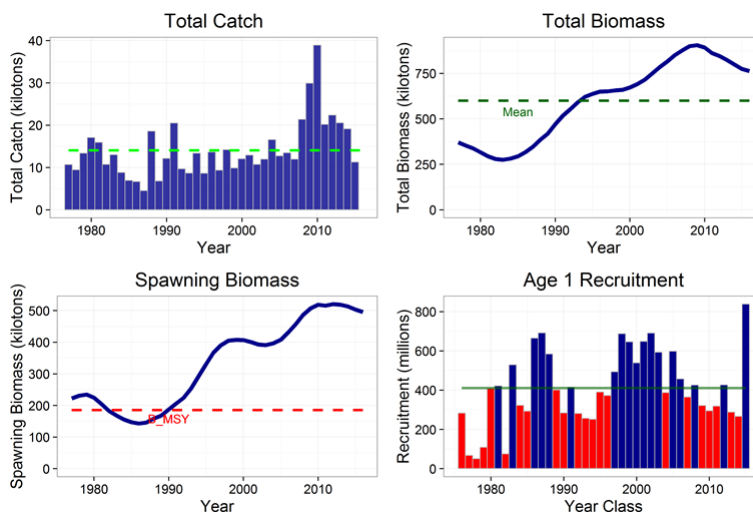
Chapter 6: arrowtooth flounder

- Last year, this assessment was a partial update only
- New survey biomass estimates:
 - EBS shelf survey biomass up 16% from 2015; up 2% from 2014
 - EBS slope survey biomass down 38% from 2012
 - AI survey biomass down 13% from 2014
 - 2016 distribution of survey biomass: 81% shelf, 8% slope, 11% AI
- Model changes:
 - EBS slope age composition data included for the first time
 - Improved age-length conversion matrix
 - Increased emphasis given to survey biomass data

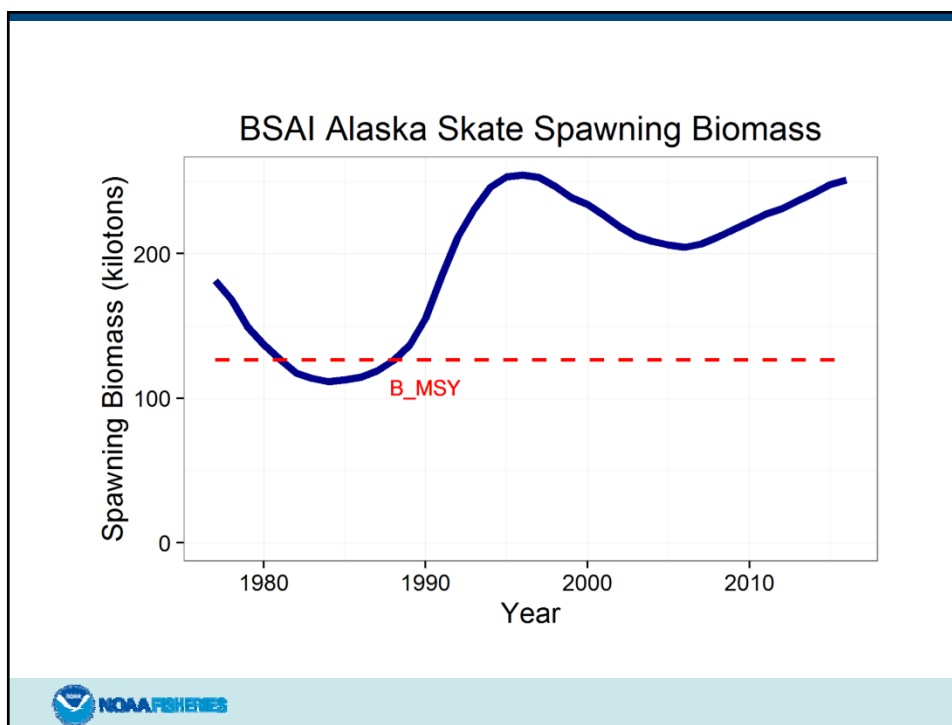
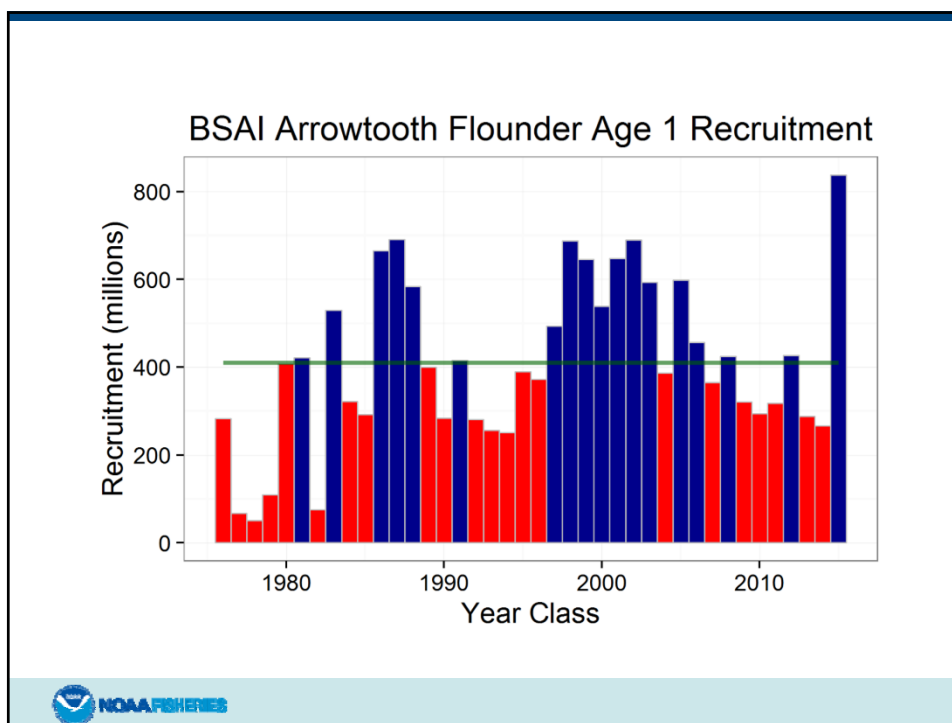


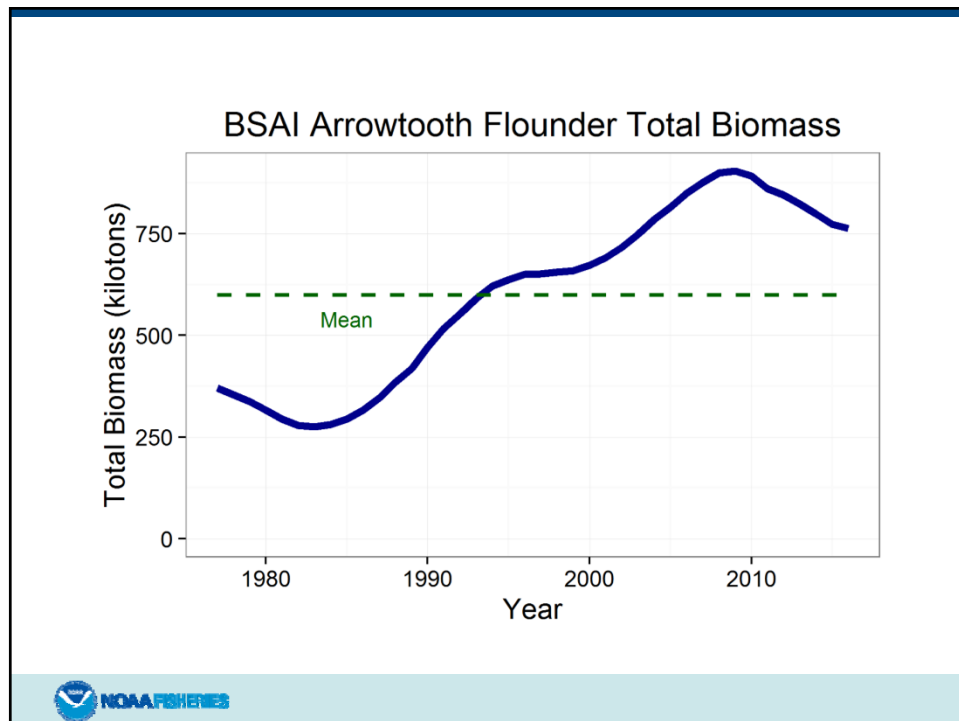
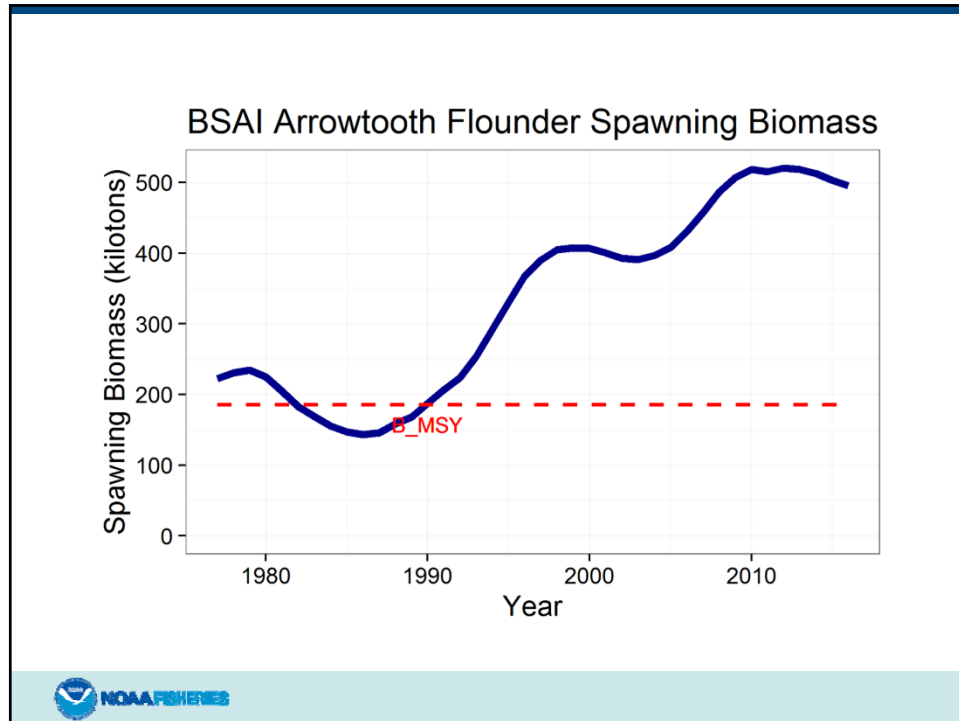
U.S. Department of Commerce | National Oceanic and Atmospheric Administration | NOAA Fisheries | Page 63
This information is distributed solely for the purpose of pre-dissemination peer review under applicable information quality guidelines. It has not been formally disseminated by the National Marine Fisheries Service and should not be construed to represent any agency determination or policy.

Arrowtooth flounder, continued



U.S. Department of Commerce | National Oceanic and Atmospheric Administration | NOAA Fisheries | Page 64
This information is distributed solely for the purpose of pre-dissemination peer review under applicable information quality guidelines. It has not been formally disseminated by the National Marine Fisheries Service and should not be construed to represent any agency determination or policy.





Arrowtooth flounder, continued

Quantity	Last year	This year	Change
M	0.35/0.20	0.35/0.20	0.00
2016 tier	3a	n/a	none
2017 tier	3a	3a	none
2016 age+ biomass	910,012	n/a	-0.14
2017 age+ biomass	920,920	779,195	-0.15
2016 spawning biomass	535,350	n/a	-0.09
2017 spawning biomass	534,347	485,802	-0.09
B100%	555,049	530,135	-0.04
B40%	222,019	212,054	-0.04
B35%	194,267	185,547	-0.04
2017 FOFL	0.180	0.151	-0.16
2017 FABC	0.153	0.129	-0.16
2016 OFL	94,035	n/a	-0.19
2017 OFL	84,156	76,100	-0.10
2016 ABC	80,701	n/a	-0.19
2017 ABC	72,216	65,371	-0.09



NOAA FISHERIES

U.S. Department of Commerce | National Oceanic and Atmospheric Administration | NOAA Fisheries | Page 69
This information is distributed solely for the purpose of pre-dissemination peer review under applicable information quality guidelines. It has not been formally disseminated by the National Marine Fisheries Service and should not be construed to represent any agency determination or policy.

Chapter 7: Kamchatka flounder

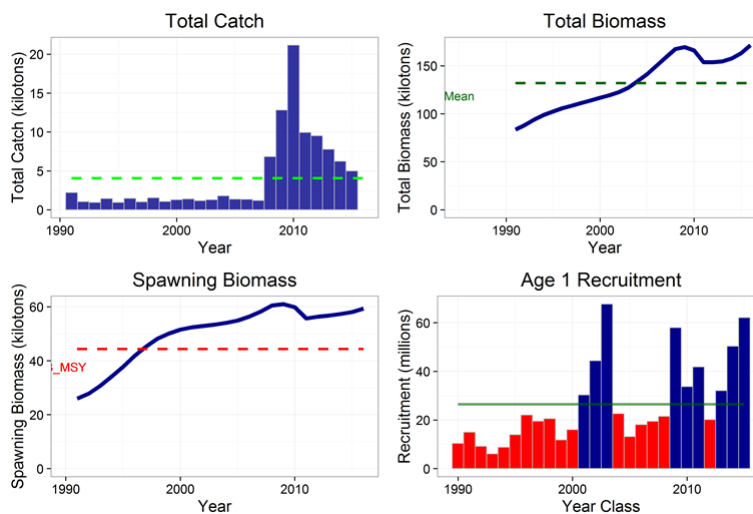
- Last year, this assessment was a partial update only
- New survey biomass estimates:
 - EBS shelf survey biomass down 8% from 2015, down 5% from 2014
 - EBS slope survey biomass down 35% from 2012
 - AI survey biomass down 38% from 2014
 - 2016 distribution of survey biomass: 53% shelf, 20% slope, 27% AI
- Model changes/alternatives:
 - None



NOAA FISHERIES

U.S. Department of Commerce | National Oceanic and Atmospheric Administration | NOAA Fisheries | Page 70
This information is distributed solely for the purpose of pre-dissemination peer review under applicable information quality guidelines. It has not been formally disseminated by the National Marine Fisheries Service and should not be construed to represent any agency determination or policy.

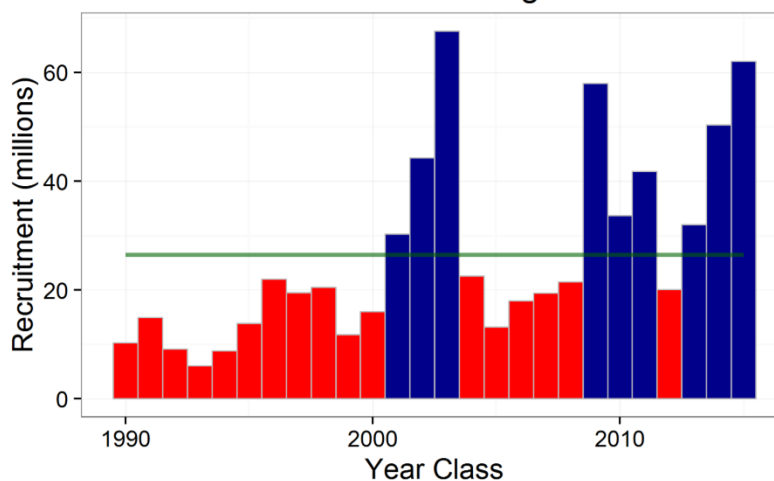
Kamchatka flounder, continued



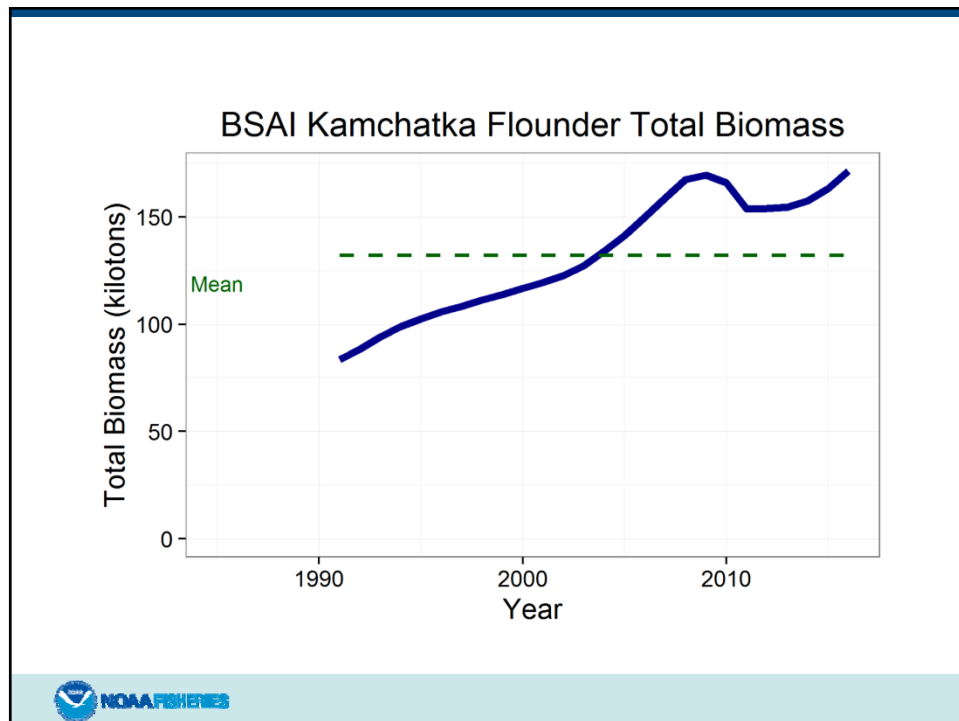
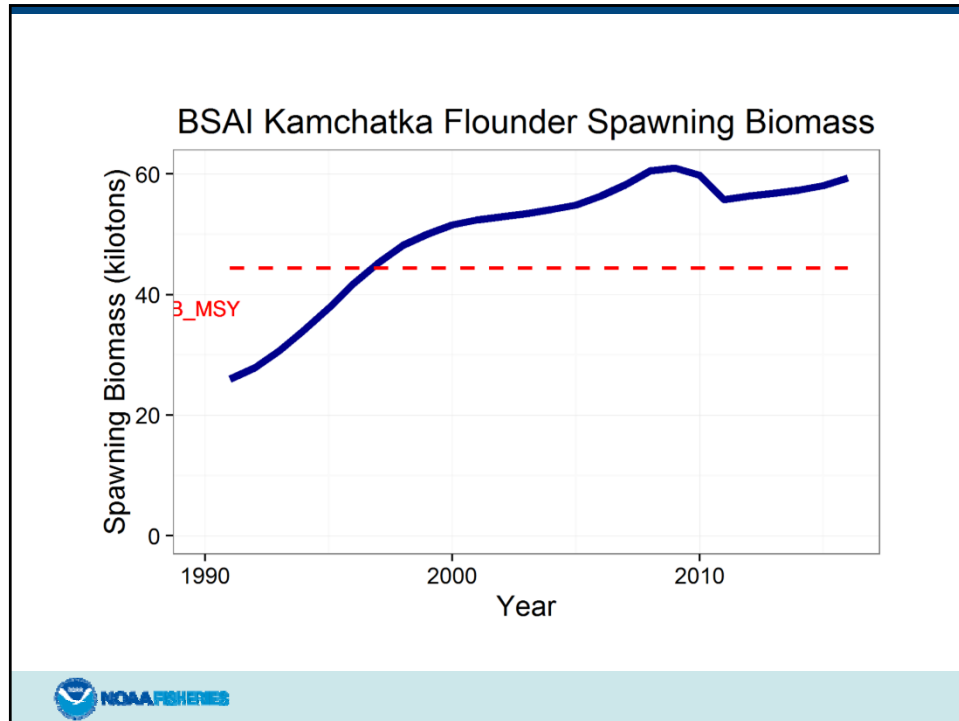
NOAA FISHERIES

U.S. Department of Commerce | National Oceanic and Atmospheric Administration | NOAA Fisheries | Page 71
This information is distributed solely for the purpose of pre-dissemination peer review under applicable information quality guidelines. It has not been formally disseminated by the National Marine Fisheries Service and should not be construed to represent any agency determination or policy.

BSAI Kamchatka Flounder Age 1 Recruitment



NOAA FISHERIES



Kamchatka flounder, continued

Quantity	Last year	This year	Change
M	0.11	0.11	0.00
2016 tier	3a	n/a	none
2017 tier	3a	3a	none
2016 age+ biomass	182,300	n/a	-0.07
2017 age+ biomass	189,100	170,300	-0.10
2016 spawning biomass	61,700	n/a	-0.02
2017 spawning biomass	63,800	60,300	-0.05
B100%	132,500	127,000	-0.04
B40%	53,000	50,800	-0.04
B35%	46,400	44,400	-0.04
2017 FOFL	0.076	0.078	0.03
2017 FABC	0.065	0.066	0.02
2016 OFL	11,100	n/a	-0.07
2017 OFL	11,700	10,360	-0.11
2016 ABC	9,500	n/a	-0.07
2017 ABC	10,000	8,880	-0.11



U.S. Department of Commerce | National Oceanic and Atmospheric Administration | NOAA Fisheries | Page 75
 This information is distributed solely for the purpose of pre-dissemination peer review under applicable information quality guidelines.
 It has not been formally disseminated by the National Marine Fisheries Service and should not be construed to represent any agency determination or policy.

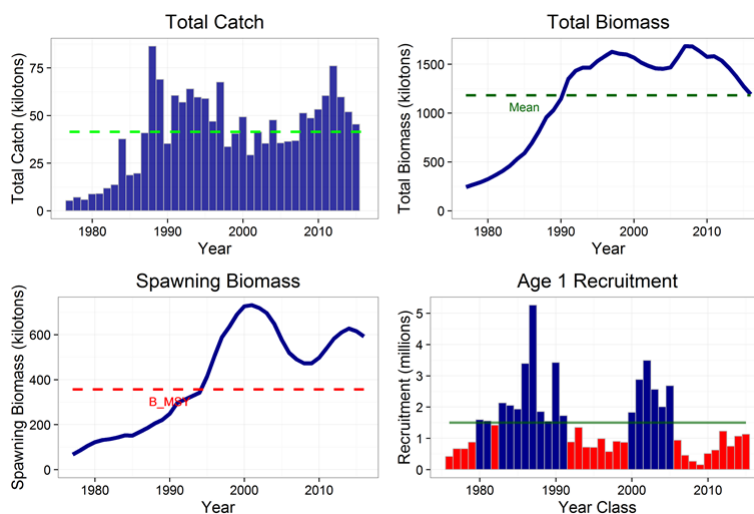
Chapter 8: northern rock sole

- New survey biomass estimates:
 - EBS shelf survey biomass up 4% from 2015
- Model changes:
 - None



U.S. Department of Commerce | National Oceanic and Atmospheric Administration | NOAA Fisheries | Page 76
 This information is distributed solely for the purpose of pre-dissemination peer review under applicable information quality guidelines.
 It has not been formally disseminated by the National Marine Fisheries Service and should not be construed to represent any agency determination or policy.

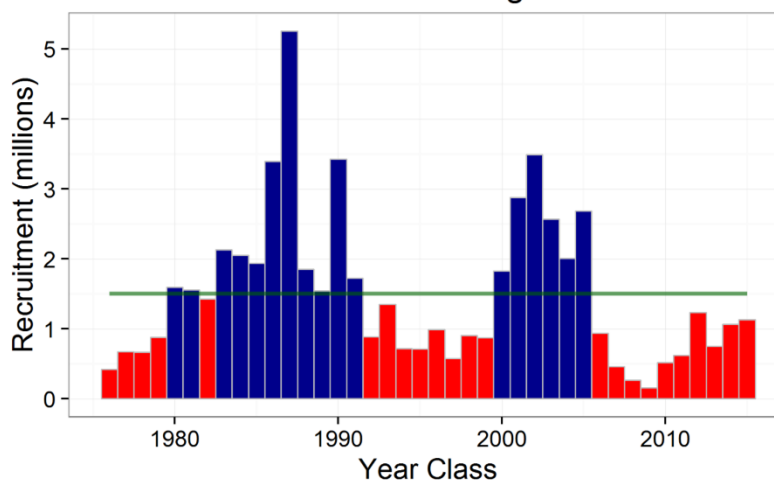
Northern rock sole, continued



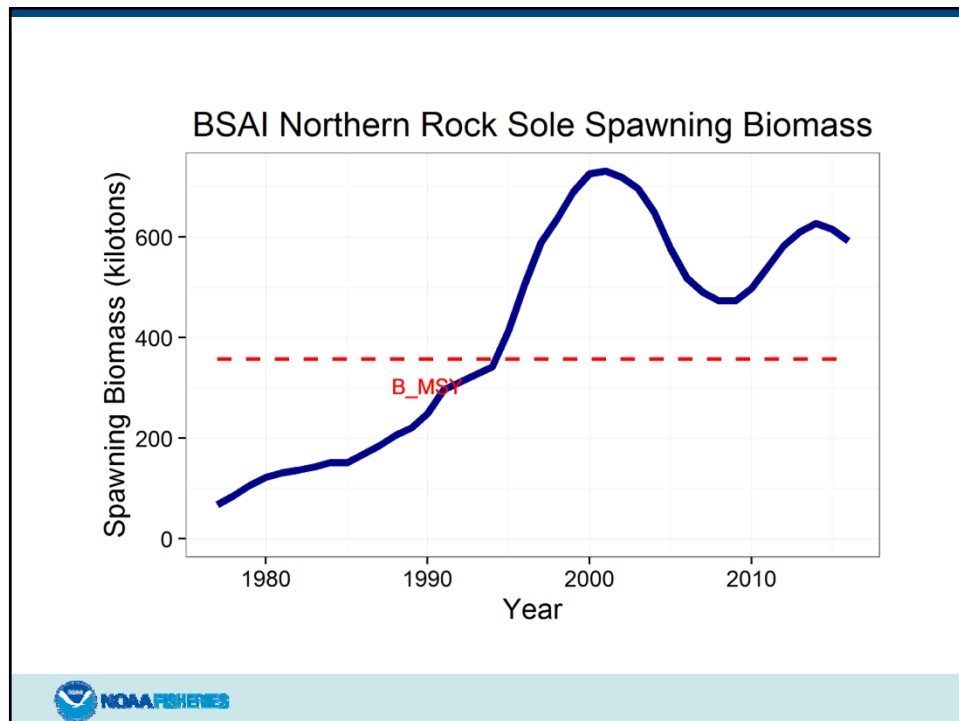
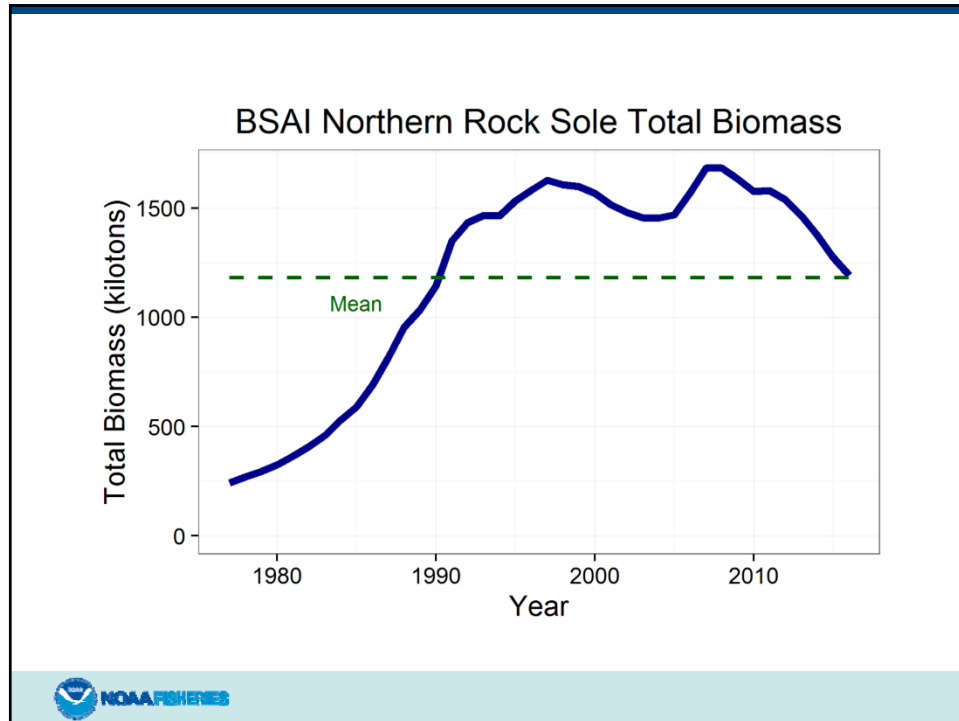
NOAA FISHERIES

U.S. Department of Commerce | National Oceanic and Atmospheric Administration | NOAA Fisheries | Page 77
This information is distributed solely for the purpose of pre-dissemination peer review under applicable information quality guidelines. It has not been formally disseminated by the National Marine Fisheries Service and should not be construed to represent any agency determination or policy.

BSAI Northern Rock Sole Age 1 Recruitment



NOAA FISHERIES



Northern rock sole, continued

Quantity	Last year	This year	Change
M	0.15	0.15	0.00
2016 tier	1a	n/a	none
2017 tier	1a	1a	none
2016 age+ biomass	1,085,200	n/a	-0.08
2017 age+ biomass	977,200	1,000,600	0.02
2016 spawning biomass	584,400	n/a	-0.08
2017 spawning biomass	522,600	539,500	0.03
B0	682,800	678,310	-0.01
Bmsy	257,000	257,000	0.00
2017 FOFL	0.152	0.16	0.05
2017 FABC	0.148	0.155	0.05
2016 OFL	165,900	n/a	-0.04
2017 OFL	149,400	159,700	0.07
2016 ABC	161,000	n/a	-0.04
2017 ABC	145,000	155,100	0.07
Value listed in chapter is incorrect.			



NOAA FISHERIES

U.S. Department of Commerce | National Oceanic and Atmospheric Administration | NOAA Fisheries | Page 81
This information is distributed solely for the purpose of pre-dissemination peer review under applicable information quality guidelines. It has not been formally disseminated by the National Marine Fisheries Service and should not be construed to represent any agency determination or policy.

Chapter 9: flathead sole

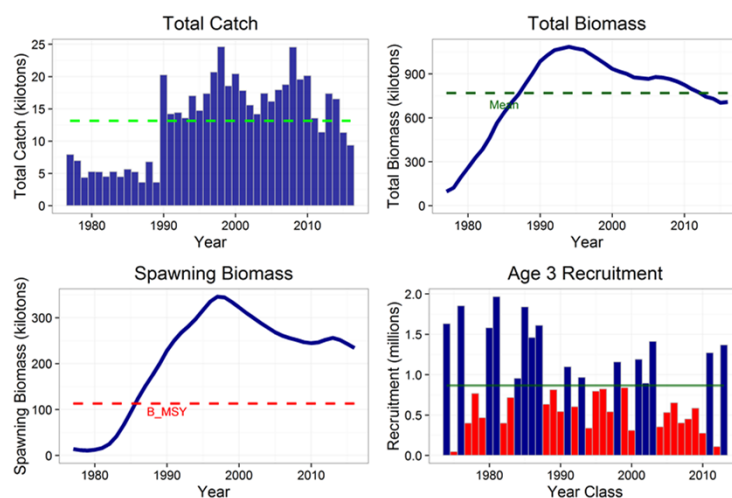
- Last year, this assessment was a partial update only
- New survey biomass estimates:
 - EBS shelf survey biomass up 13% from 2015; down 15% from 2014
 - AI survey biomass down 50% from 2014
 - 2016 distribution of survey biomass: 99% shelf, 1% AI
- Model changes:
 - Average emphasis given to size and age composition data revised
 - Growth parameters updated



NOAA FISHERIES

U.S. Department of Commerce | National Oceanic and Atmospheric Administration | NOAA Fisheries | Page 82
This information is distributed solely for the purpose of pre-dissemination peer review under applicable information quality guidelines. It has not been formally disseminated by the National Marine Fisheries Service and should not be construed to represent any agency determination or policy.

Flathead sole, continued



NOAA FISHERIES

U.S. Department of Commerce | National Oceanic and Atmospheric Administration | NOAA Fisheries | Page 83
This information is distributed solely for the purpose of pre-dissemination peer review under applicable information quality guidelines. It has not been formally disseminated by the National Marine Fisheries Service and should not be construed to represent any agency determination or policy.

Flathead sole, continued

Quantity	Last year	This year	Change
M	0.20	0.20	0.00
2016 tier	3a	n/a	none
2017 tier	3a	3a	none
2016 age+ biomass	737,777	n/a	0.01
2017 age+ biomass	747,389	747,557	0.00
2016 spawning biomass	240,427	n/a	-0.07
2017 spawning biomass	231,139	223,469	-0.03
B100%	319,206	322,938	0.01
B40%	127,682	129,175	0.01
B35%	111,722	113,028	0.01
2017 FOFL	0.35	0.41	0.17
2017 FABC	0.28	0.34	0.21
2016 OFL	79,562	n/a	0.03
2017 OFL	77,544	81,654	0.05
2016 ABC	66,250	n/a	0.03
2017 ABC	64,580	68,278	0.06



NOAA FISHERIES

U.S. Department of Commerce | National Oceanic and Atmospheric Administration | NOAA Fisheries | Page 84
This information is distributed solely for the purpose of pre-dissemination peer review under applicable information quality guidelines. It has not been formally disseminated by the National Marine Fisheries Service and should not be construed to represent any agency determination or policy.

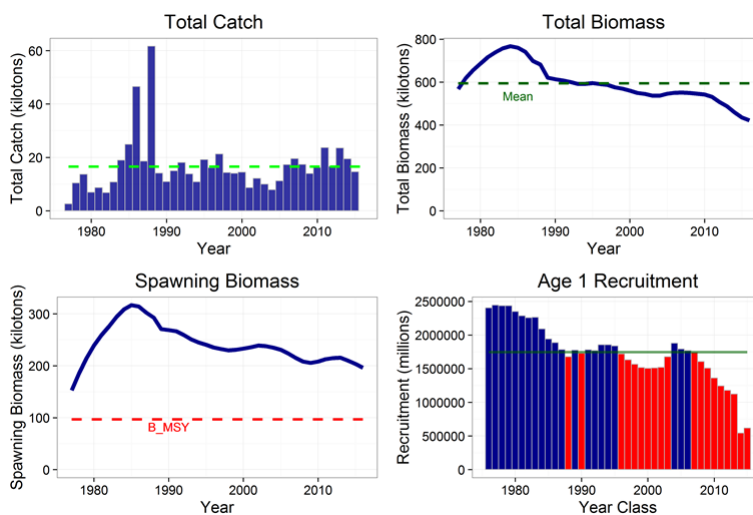
Chapter 10: Alaska plaice

- Last year, this assessment was a partial update only
- New survey biomass estimates:
 - EBS shelf survey biomass up 20% from 2015; down 6% from 2014
- Model changes:
 - None

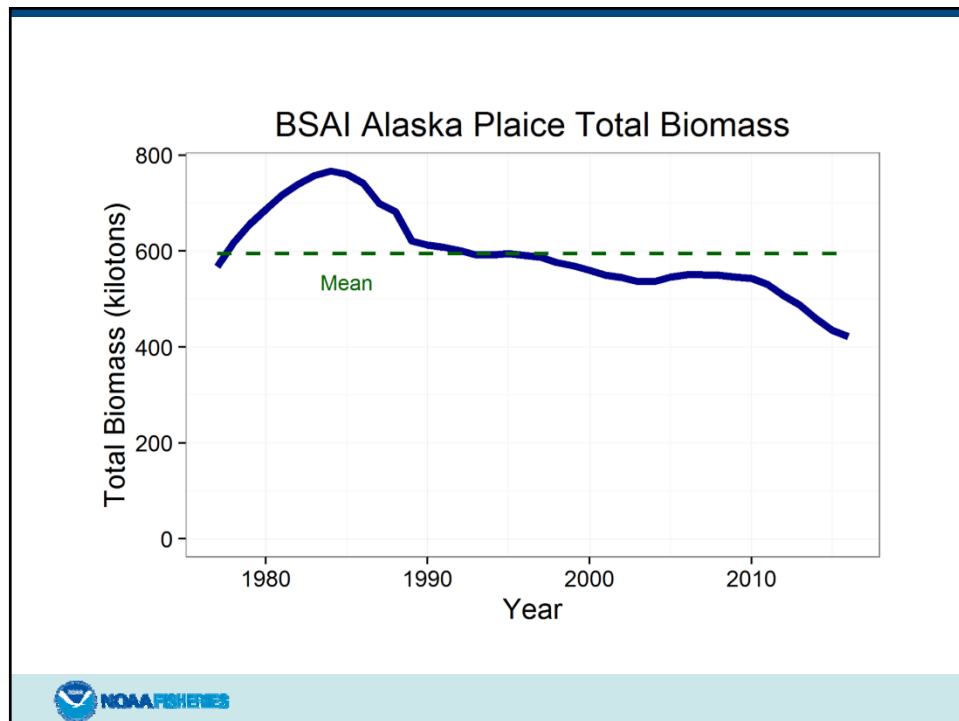
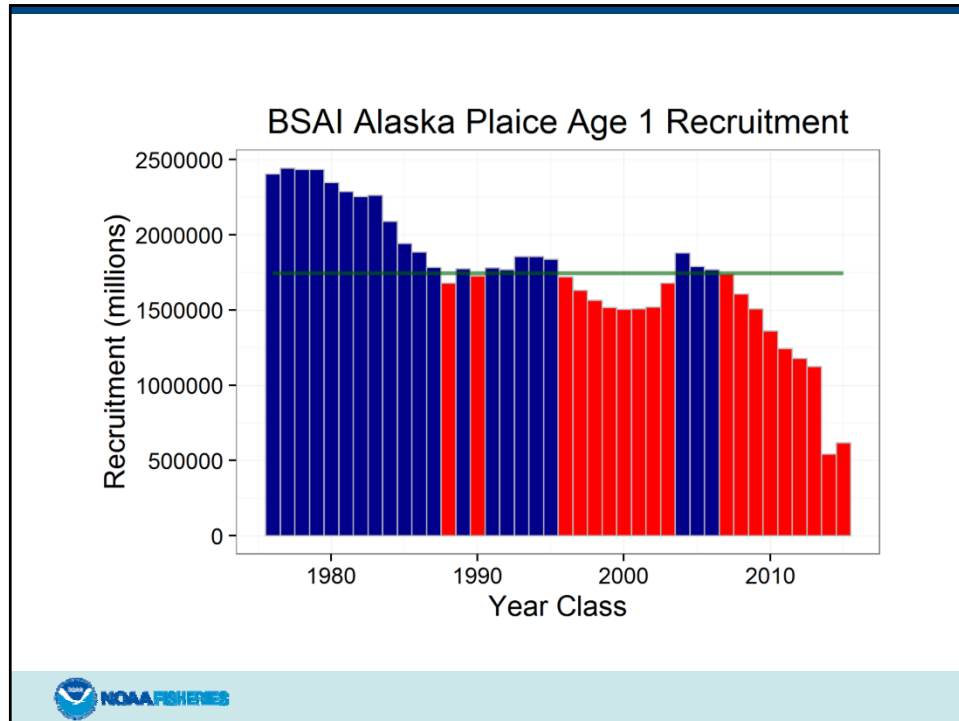


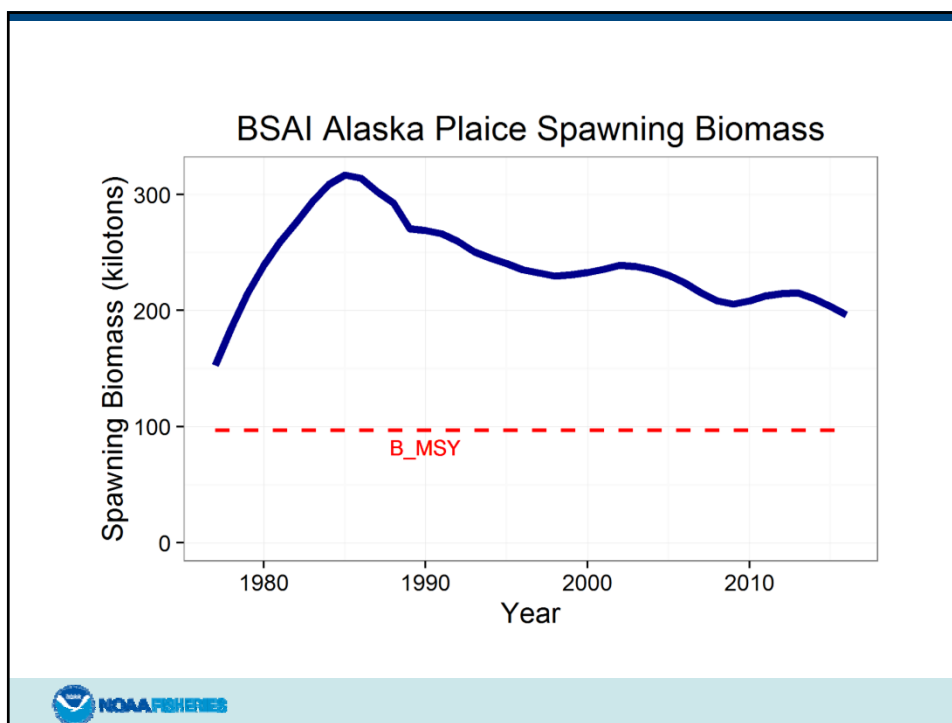
U.S. Department of Commerce | National Oceanic and Atmospheric Administration | NOAA Fisheries | Page 85
This information is distributed solely for the purpose of pre-dissemination peer review under applicable information quality guidelines. It has not been formally disseminated by the National Marine Fisheries Service and should not be construed to represent any agency determination or policy.

Alaska plaice, continued



U.S. Department of Commerce | National Oceanic and Atmospheric Administration | NOAA Fisheries | Page 86
This information is distributed solely for the purpose of pre-dissemination peer review under applicable information quality guidelines. It has not been formally disseminated by the National Marine Fisheries Service and should not be construed to represent any agency determination or policy.





Alaska plaice, continued

Quantity	Last year	This year	Change
M	0.13	0.13	0.00
2016 tier	3a	n/a	none
2017 tier	3a	3a	none
2016 age+ biomass	468,100	n/a	-0.12
2017 age+ biomass	465,400	412,600	-0.11
2016 spawning biomass	204,600	n/a	-0.09
2017 spawning biomass	193,600	186,300	-0.04
B100%	328,800	276,250	-0.16
B40%	131,500	110,500	-0.16
B35%	115,100	96,700	-0.16
2017 FOFL	0.175	0.154	-0.12
2017 FABC	0.143	0.128	-0.10
2016 OFL	49,000	n/a	-0.13
2017 OFL	46,800	42,800	-0.09
2016 ABC	41,000	n/a	-0.12
2017 ABC	39,100	36,000	-0.08



U.S. Department of Commerce | National Oceanic and Atmospheric Administration | NOAA Fisheries | Page 90
 This information is distributed solely for the purpose of pre-dissemination peer review under applicable information quality guidelines.
 It has not been formally disseminated by the National Marine Fisheries Service and should not be construed to represent any agency determination or policy.

Chapter 11: other flatfish

- New survey biomass estimates:
 - EBS shelf survey biomass up 40% from 2015
 - EBS slope survey biomass down 9% from 2012
 - AI survey biomass down 2% from 2014
 - 2016 distribution of survey biomass: 79% shelf, 10% slope, 11% AI
- Model changes:
 - One minor change regarding treatment of years with no survey



U.S. Department of Commerce | National Oceanic and Atmospheric Administration | NOAA Fisheries | Page 91
This information is distributed solely for the purpose of pre-dissemination peer review under applicable information quality guidelines. It has not been formally disseminated by the National Marine Fisheries Service and should not be construed to represent any agency determination or policy.

Other flatfish, continued

Quantity*	Last year	This year	Change
M	0.155	0.155	0.00
2016 tier	5	n/a	none
2017 tier	5	5	none
Biomass	112,104	113,450	0.01
2017 FOFL	0.155	0.155	0.00
2017 FABC	0.117	0.116	0.00
2016 OFL	17,414	n/a	0.01
2017 OFL	17,414	17,591	0.01
2016 ABC	13,061	n/a	0.01
2017 ABC	13,061	13,193	0.01

*Instantaneous rates are biomass-weighted averages

Chapter lists survey estimate instead of RE estimate

Values listed in chapter are incorrect



U.S. Department of Commerce | National Oceanic and Atmospheric Administration | NOAA Fisheries | Page 92
This information is distributed solely for the purpose of pre-dissemination peer review under applicable information quality guidelines. It has not been formally disseminated by the National Marine Fisheries Service and should not be construed to represent any agency determination or policy.

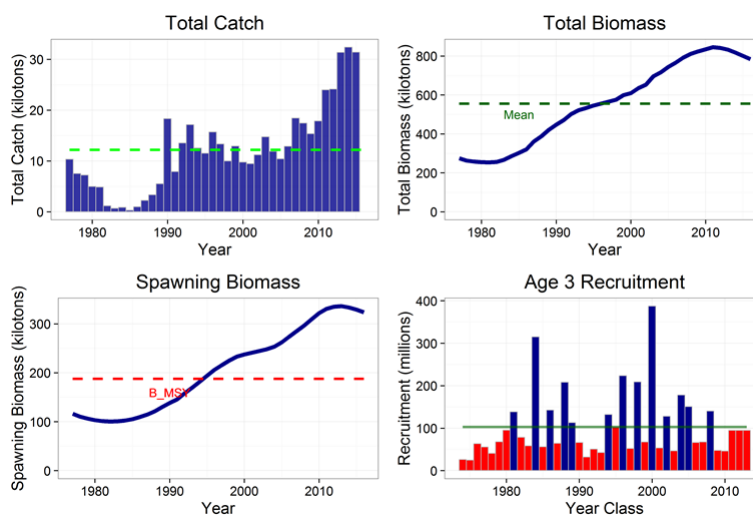
Chapter 12: Pacific ocean perch

- Last year, this assessment was a partial update only
- New survey biomass estimates:
 - EBS slope survey biomass up 55% from 2012
 - AI survey biomass up 1% from 2014
 - 2016 distribution of survey biomass: 27% slope, 73% AI
- Model changes:
 - Historic (1968-1979) fishery CPUE data removed
 - EBS slope survey data included for the first time
 - Age and size composition data recompiled
 - Growth matrices updated
 - Average emphasis given to size and age composition data revised

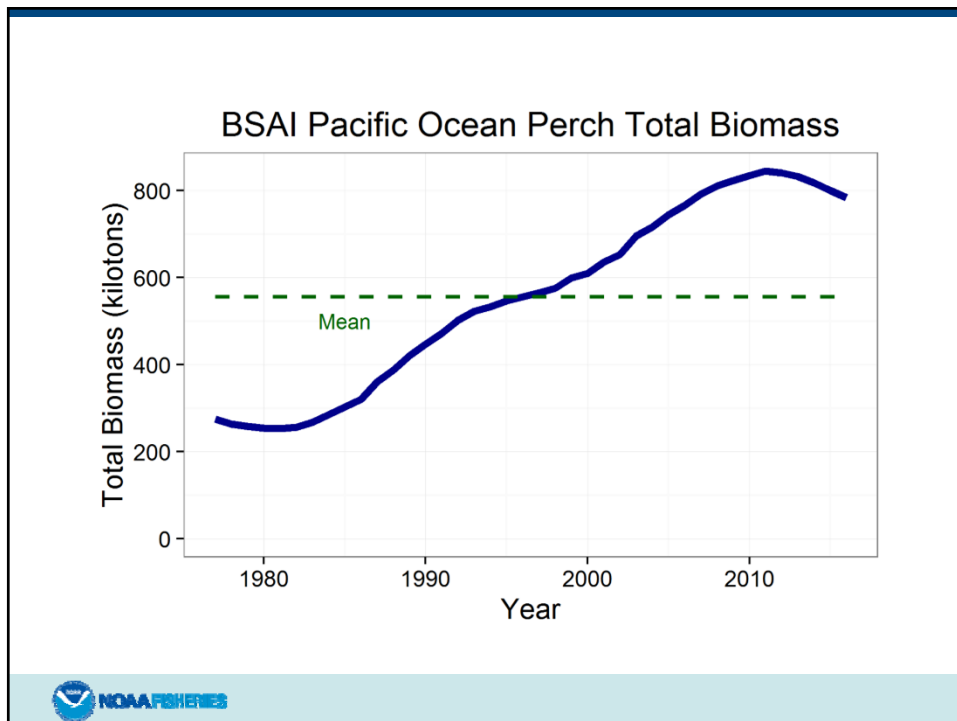
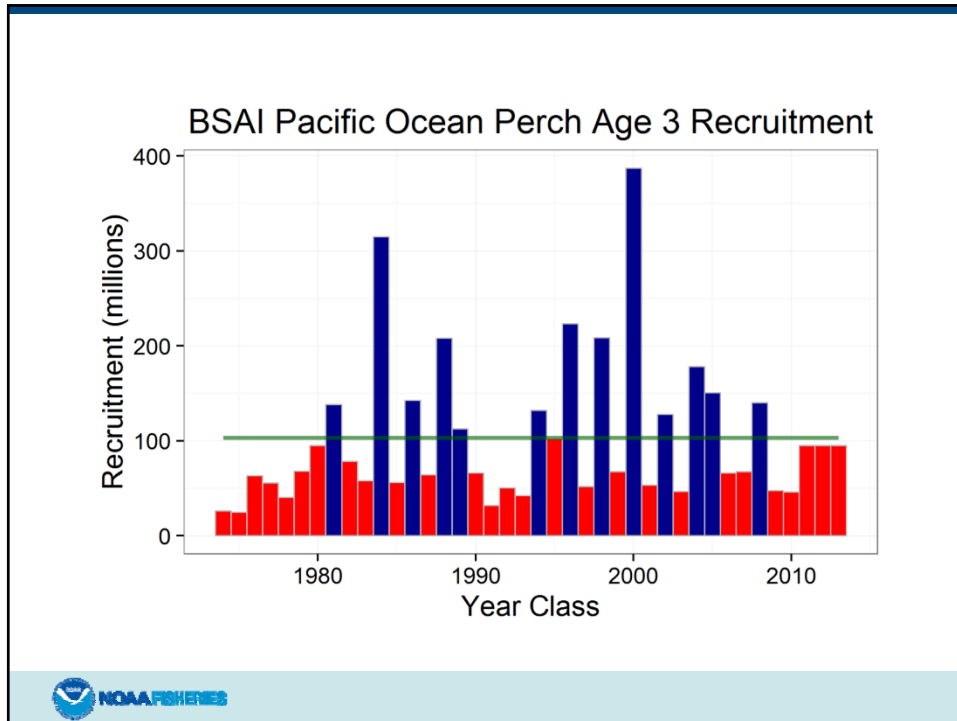


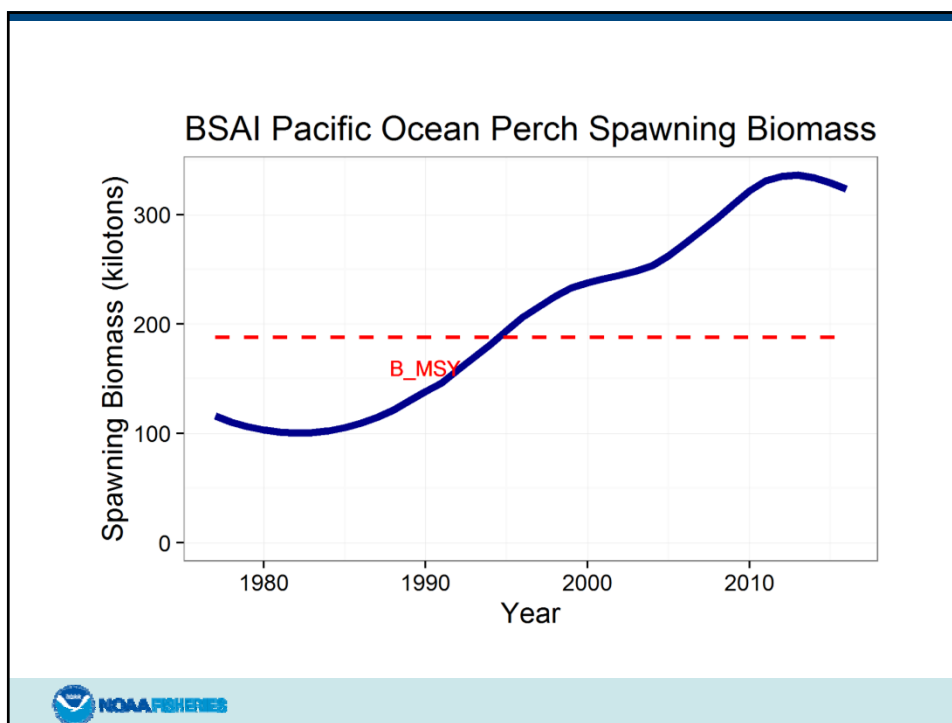
U.S. Department of Commerce | National Oceanic and Atmospheric Administration | NOAA Fisheries | Page 93
This information is distributed solely for the purpose of pre-dissemination peer review under applicable information quality guidelines. It has not been formally disseminated by the National Marine Fisheries Service and should not be construed to represent any agency determination or policy.

Pacific ocean perch, continued



U.S. Department of Commerce | National Oceanic and Atmospheric Administration | NOAA Fisheries | Page 94
This information is distributed solely for the purpose of pre-dissemination peer review under applicable information quality guidelines. It has not been formally disseminated by the National Marine Fisheries Service and should not be construed to represent any agency determination or policy.





Pacific ocean perch, continued

Quantity	Last year	This year	Change
M	0.062	0.058	-0.06
2016 tier	3a	n/a	none
2017 tier	3a	3a	none
2016 age+ biomass	557,886	n/a	0.38
2017 age+ biomass	542,162	767,767	0.42
2016 spawning biomass	222,369	n/a	0.41
2017 spawning biomass	211,339	314,489	0.49
B100%	423,008	536,713	0.27
B40%	169,203	214,685	0.27
B35%	148,053	187,849	0.27
2017 FOFL	0.109	0.101	-0.07
2017 FABC	0.089	0.082	-0.08
2016 OFL	40,529	n/a	0.31
2017 OFL	38,589	53,152	0.38
2016 ABC	33,320	n/a	0.31
2017 ABC	31,724	43,723	0.38



U.S. Department of Commerce | National Oceanic and Atmospheric Administration | NOAA Fisheries | Page 98
 This information is distributed solely for the purpose of pre-dissemination peer review under applicable information quality guidelines.
 It has not been formally disseminated by the National Marine Fisheries Service and should not be construed to represent any agency determination or policy.

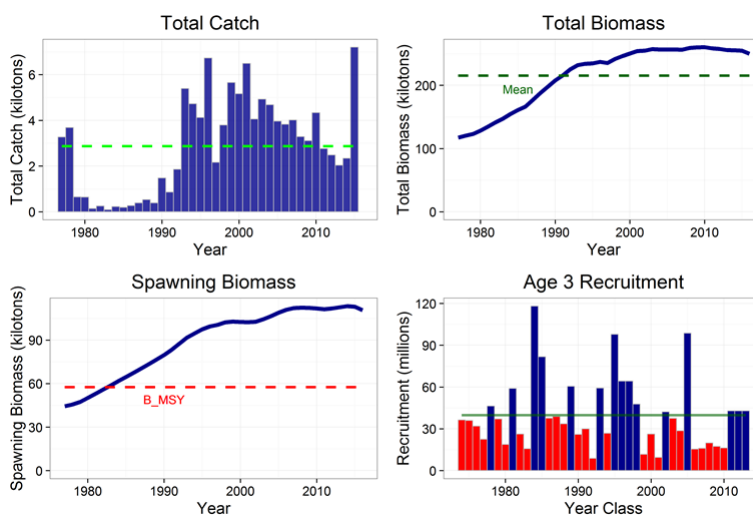
Chapter 13: northern rockfish

- Last year, this assessment was a partial update only
- New survey biomass estimates:
 - AI survey biomass down 46% from 2014
 - However, 2014 AI survey biomass was up 66% from 2012
- Model changes:
 - Age and size composition data recompiled
 - Growth matrices updated
 - Average emphasis given to size and age composition data revised

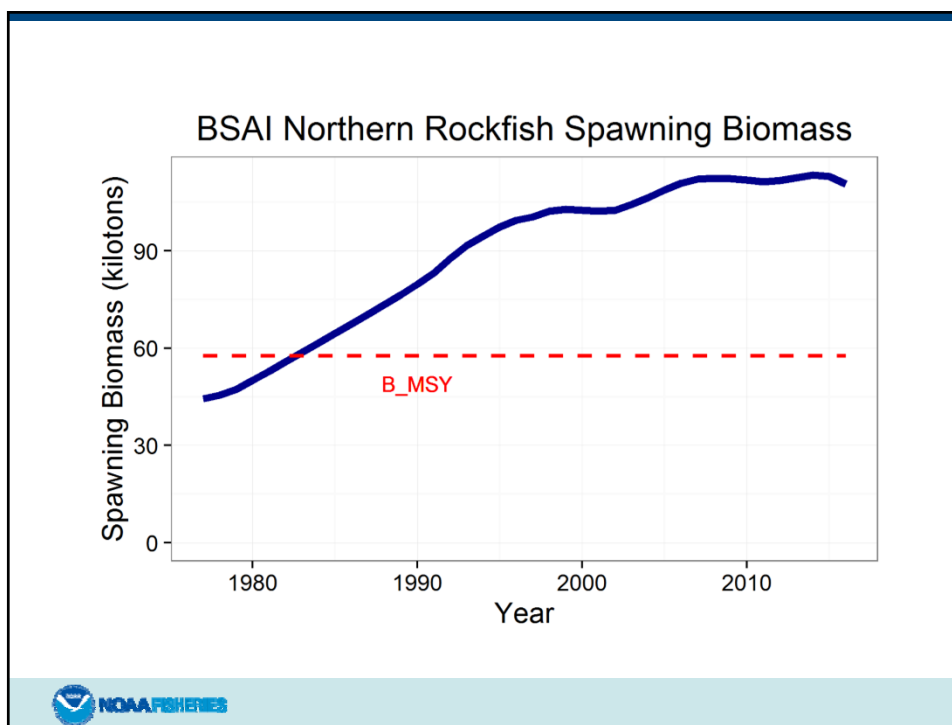
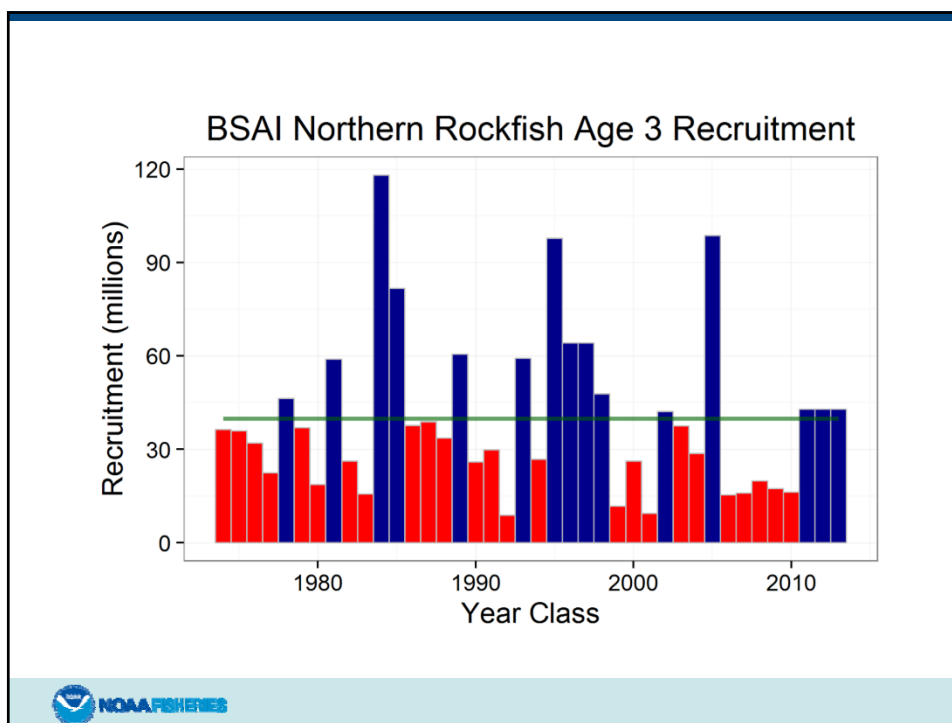


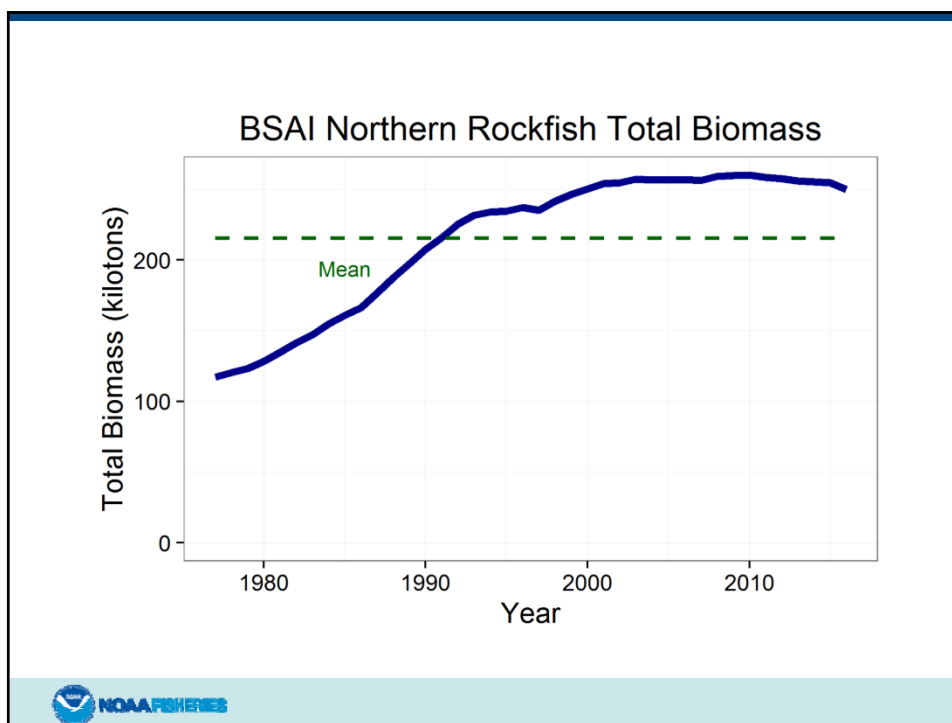
U.S. Department of Commerce | National Oceanic and Atmospheric Administration | NOAA Fisheries | Page 99
This information is distributed solely for the purpose of pre-dissemination peer review under applicable information quality guidelines. It has not been formally disseminated by the National Marine Fisheries Service and should not be construed to represent any agency determination or policy.

Northern rockfish, continued



U.S. Department of Commerce | National Oceanic and Atmospheric Administration | NOAA Fisheries | Page 100
This information is distributed solely for the purpose of pre-dissemination peer review under applicable information quality guidelines. It has not been formally disseminated by the National Marine Fisheries Service and should not be construed to represent any agency determination or policy.





Northern rockfish, continued

Quantity	Last year	This year	Change
M	0.049	0.046	-0.06
2016 tier	3a	n/a	none
2017 tier	3a	3a	none
2016 age+ biomass	213,674	n/a	0.16
2017 age+ biomass	209,369	248,160	0.19
2016 spawning biomass	91,648	n/a	0.17
2017 spawning biomass	88,326	107,660	0.22
B100%	144,420	164,674	0.14
B40%	57,768	65,870	0.14
B35%	50,547	57,636	0.14
2017 FOFL	0.087	0.08	-0.08
2017 FABC	0.070	0.065	-0.07
2016 OFL	14,689	n/a	0.11
2017 OFL	14,085	16,242	0.15
2016 ABC	11,960	n/a	0.11
2017 ABC	11,468	13,264	0.16



U.S. Department of Commerce | National Oceanic and Atmospheric Administration | NOAA Fisheries | Page 104
 This information is distributed solely for the purpose of pre-dissemination peer review under applicable information quality guidelines.
 It has not been formally disseminated by the National Marine Fisheries Service and should not be construed to represent any agency determination or policy.

Chapter 14: blackspotted/rougheye

- Last year, this assessment was a partial update only
- New survey biomass estimates:
 - EBS slope survey biomass down 71% from 2012
 - AI survey biomass up 113% from 2014
 - However, 2014 estimate was down 63% from 2012
 - 2016 distribution of survey biomass: slope = 4%, AI = 96%
- Model changes:
 - EBS slope survey data included for the first time
 - Age and size composition data recompiled
 - Growth matrices updated
 - Average emphasis given to size and age composition data revised



U.S. Department of Commerce | National Oceanic and Atmospheric Administration | NOAA Fisheries | Page 105
This information is distributed solely for the purpose of pre-dissemination peer review under applicable information quality guidelines. It has not been formally disseminated by the National Marine Fisheries Service and should not be construed to represent any agency determination or policy.

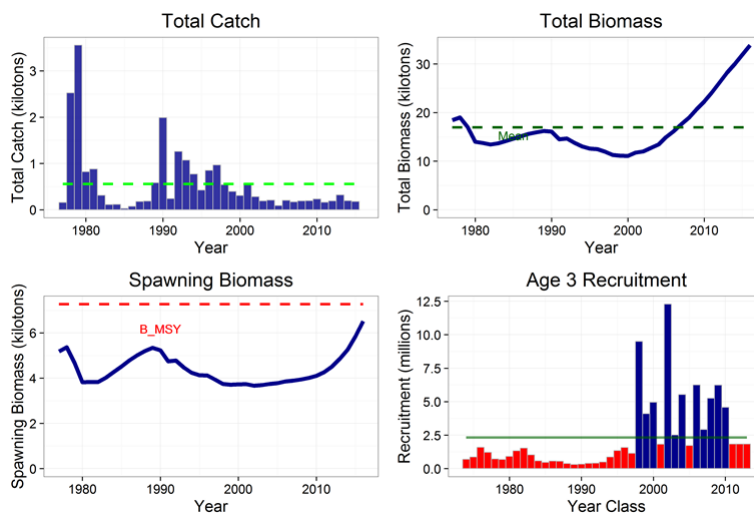
Blackspotted/rougheye, continued

- 2016 catch to date in the WAI (38 t) is less than the 2016 MSSC (58 t)
- The Team recommends that the 2017 MSSC in the WAI be set at a value of 31 t, as calculated in this year's assessment (29 t from SSC)
- Members of the public expressed that it may be difficult stay under the further reduced MSSC
- Extensive discussion regarding the objective of the MSSC, and whether genetic studies would provide more insight into whether the current split between the WAI and CAI is appropriate
- The Team recommends that the Council task staff with further analysis of possible alternative management measures if such analysis is desired



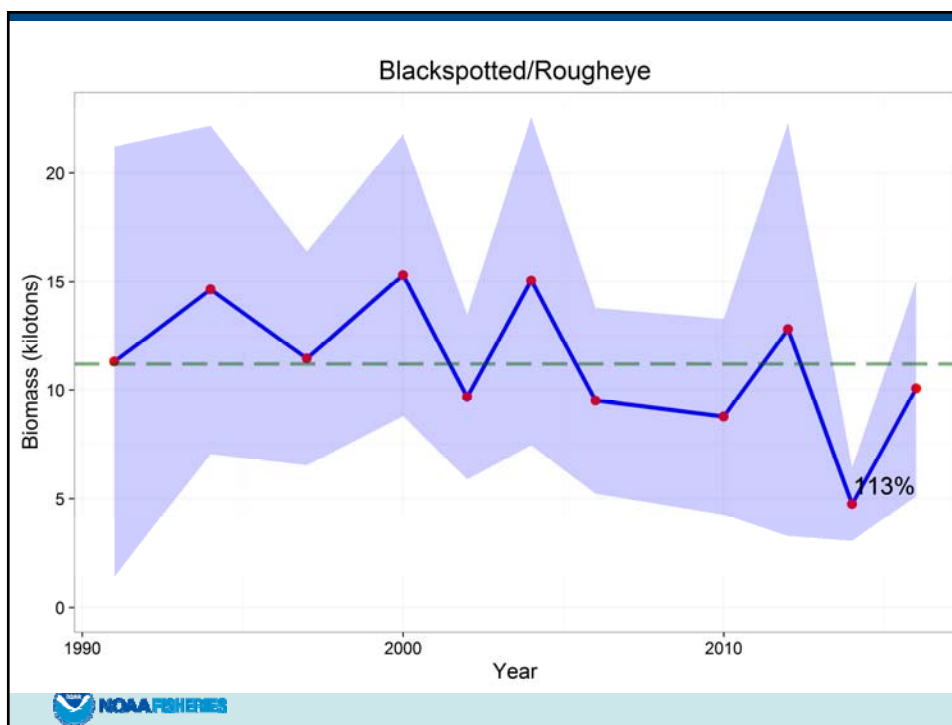
U.S. Department of Commerce | National Oceanic and Atmospheric Administration | NOAA Fisheries | Page 106
This information is distributed solely for the purpose of pre-dissemination peer review under applicable information quality guidelines. It has not been formally disseminated by the National Marine Fisheries Service and should not be construed to represent any agency determination or policy.

Blackspotted/rougheye, continued

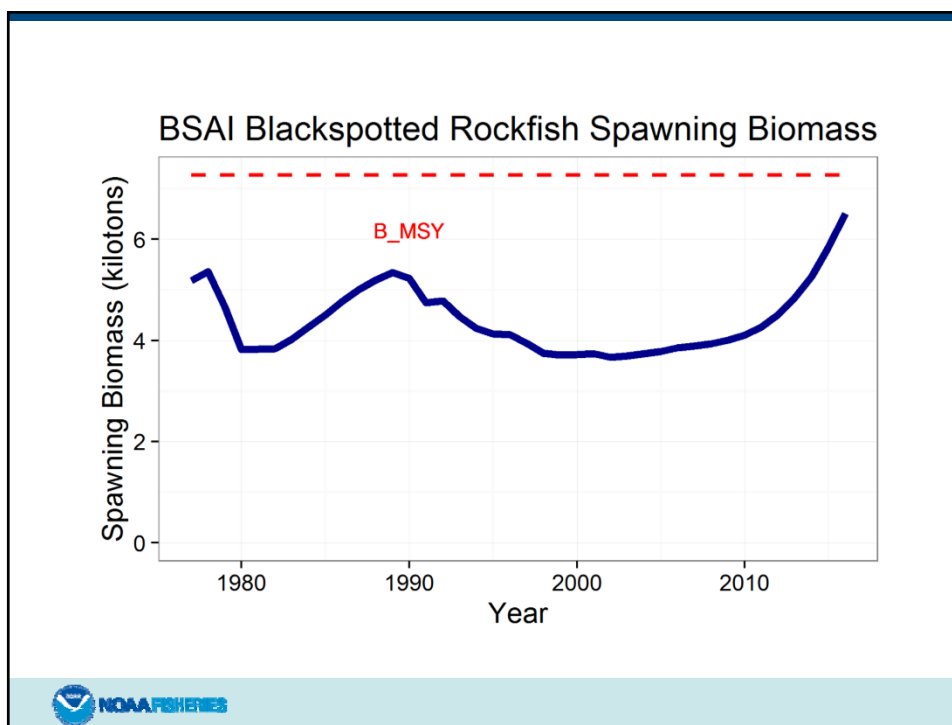
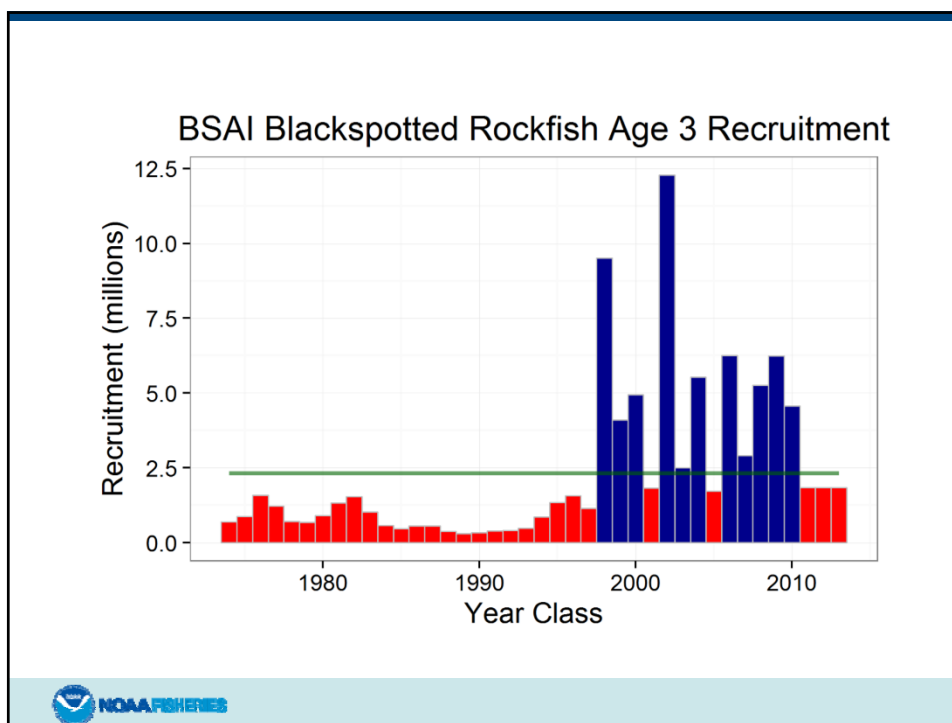


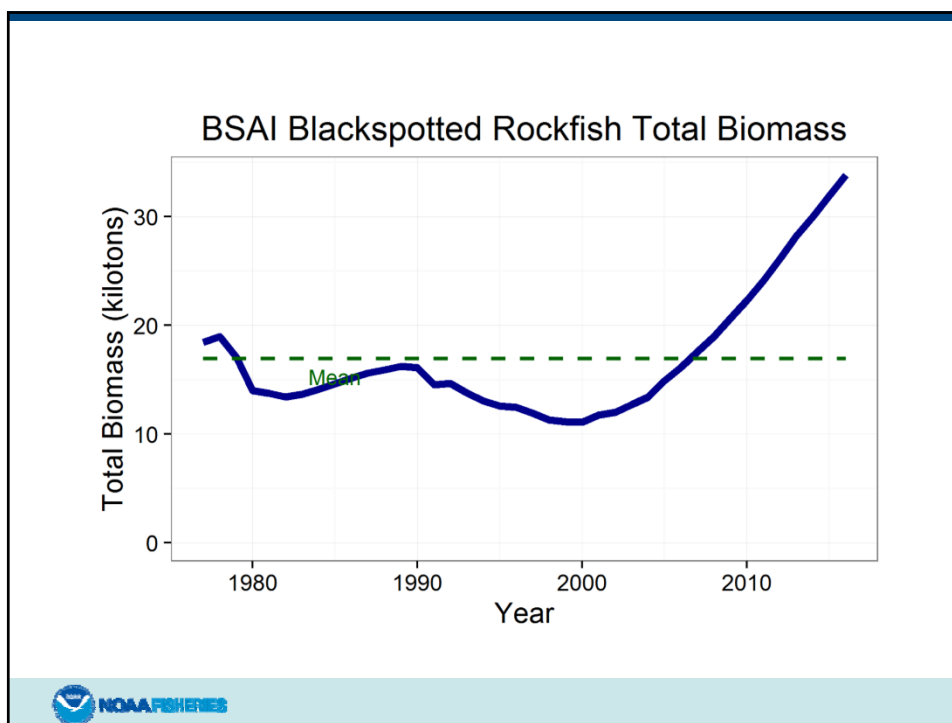
NOAA FISHERIES

U.S. Department of Commerce | National Oceanic and Atmospheric Administration | NOAA Fisheries | Page 107
This information is distributed solely for the purpose of pre-dissemination peer review under applicable information quality guidelines. It has not been formally disseminated by the National Marine Fisheries Service and should not be construed to represent any agency determination or policy.



NOAA FISHERIES





Blackspotted/rougheye

Quantity	Last year*	This year	Change
M	0.033	0.033	0.00
2016 tier	3b	n/a	none
2017 tier	3b	3b	none
2016 age+ biomass	42,605	n/a	-0.16
2017 age+ biomass	44,682	35,669	-0.20
2016 spawning biomass	9,076	n/a	-0.20
2017 spawning biomass	10,307	7,305	-0.29
B100%	28,507	20,777	-0.27
B40%	11,403	8,311	-0.27
B35%	9,977	7,272	-0.27
2017 FOFL	0.051	0.048	-0.06
2017 FABC	0.042	0.039	-0.07
2016 OFL	649	n/a	-0.06
2017 OFL	811	612	-0.25
2016 ABC	528	n/a	-0.05
2017 ABC	661	501	-0.24

*Last year = AI only



U.S. Department of Commerce | National Oceanic and Atmospheric Administration | NOAA Fisheries | Page 112
This information is distributed solely for the purpose of pre-dissemination peer review under applicable information quality guidelines. It has not been formally disseminated by the National Marine Fisheries Service and should not be construed to represent any agency determination or policy.

Chapter 15: shorttraker rockfish

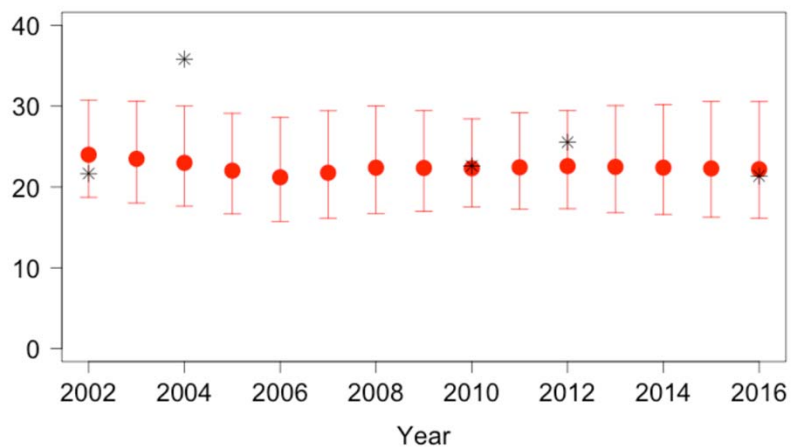
- Last year, this assessment was a partial update only
- New survey biomass estimates:
 - EBS slope survey biomass down 33% from 2012
 - AI survey biomass down 8% from 2014
 - 2016 distribution of survey biomass: slope = 29%, AI = 71%
- Model changes/alternatives:
 - None



U.S. Department of Commerce | National Oceanic and Atmospheric Administration | NOAA Fisheries | Page 113
This information is distributed solely for the purpose of pre-dissemination peer review under applicable information quality guidelines. It has not been formally disseminated by the National Marine Fisheries Service and should not be construed to represent any agency determination or policy.

Shorttraker rockfish, continued

- Biomass estimates from random effects model



U.S. Department of Commerce | National Oceanic and Atmospheric Administration | NOAA Fisheries | Page 114
This information is distributed solely for the purpose of pre-dissemination peer review under applicable information quality guidelines. It has not been formally disseminated by the National Marine Fisheries Service and should not be construed to represent any agency determination or policy.

Shortraker rockfish, continued

Quantity	Last year	This year	Change
M	0.030	0.030	0.00
2016 tier	5	n/a	none
2017 tier	5	5	none
Biomass	23,009	22,191	-0.04
2017 FOFL	0.030	0.030	0.00
2017 FABC	0.0225	0.0225	0.00
2016 OFL	690	n/a	-0.04
2017 OFL	690	666	-0.04
2016 ABC	518	n/a	-0.04
2017 ABC	518	499	-0.04



U.S. Department of Commerce | National Oceanic and Atmospheric Administration | NOAA Fisheries | Page 115
 This information is distributed solely for the purpose of pre-dissemination peer review under applicable information quality guidelines.
 It has not been formally disseminated by the National Marine Fisheries Service and should not be construed to represent any agency determination or policy.

Chapter 16: other rockfish

- Last year, this assessment was a partial update only
- New data:
 - EBS slope survey biomass up 21% from 2012
 - AI survey biomass down 23% from 2014
 - 2016 distribution of survey biomass: slope = 64%, AI = 36%
- Model changes/alternatives:
 - None



U.S. Department of Commerce | National Oceanic and Atmospheric Administration | NOAA Fisheries | Page 116
 This information is distributed solely for the purpose of pre-dissemination peer review under applicable information quality guidelines.
 It has not been formally disseminated by the National Marine Fisheries Service and should not be construed to represent any agency determination or policy.

Other rockfish, continued

Quantity*	Last year	This year	Change
M	0.034	0.033	-0.02
2016 tier	5	n/a	none
2017 tier	5	5	none
Biomass	49,630	55,312	0.11
2017 FOFL	0.034	0.033	-0.02
2017 FABC	0.025	0.025	-0.02
2016 OFL	1,667	n/a	0.09
2017 OFL	1,667	1,816	0.09
2016 ABC	1,250	n/a	0.09
2017 ABC	1,250	1,362	0.09

*Instantaneous rates are biomass-weighted averages



U.S. Department of Commerce | National Oceanic and Atmospheric Administration | NOAA Fisheries | Page 117
This information is distributed solely for the purpose of pre-dissemination peer review under applicable information quality guidelines. It has not been formally disseminated by the National Marine Fisheries Service and should not be construed to represent any agency determination or policy.

Chapter 17: Atka mackerel

- New survey biomass estimates:
 - AI survey biomass down 38% from 2014
 - However, 2014 biomass was up 161% from 2012
- Model changes:
 - Emphasis given to individual size and age compositions revised, although averages kept at 2014 levels
 - Minor adjustment to the set of years used to compute average selectivity for projections
 - Revised estimate of the ratio of catch to ABC used for projections



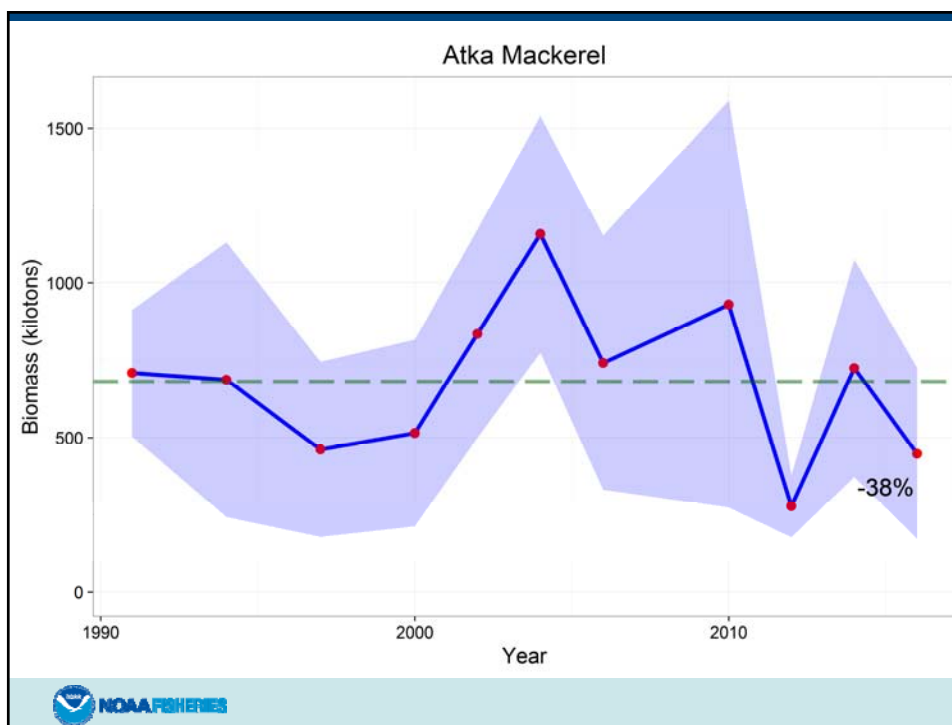
U.S. Department of Commerce | National Oceanic and Atmospheric Administration | NOAA Fisheries | Page 118
This information is distributed solely for the purpose of pre-dissemination peer review under applicable information quality guidelines. It has not been formally disseminated by the National Marine Fisheries Service and should not be construed to represent any agency determination or policy.

Atka mackerel, continued

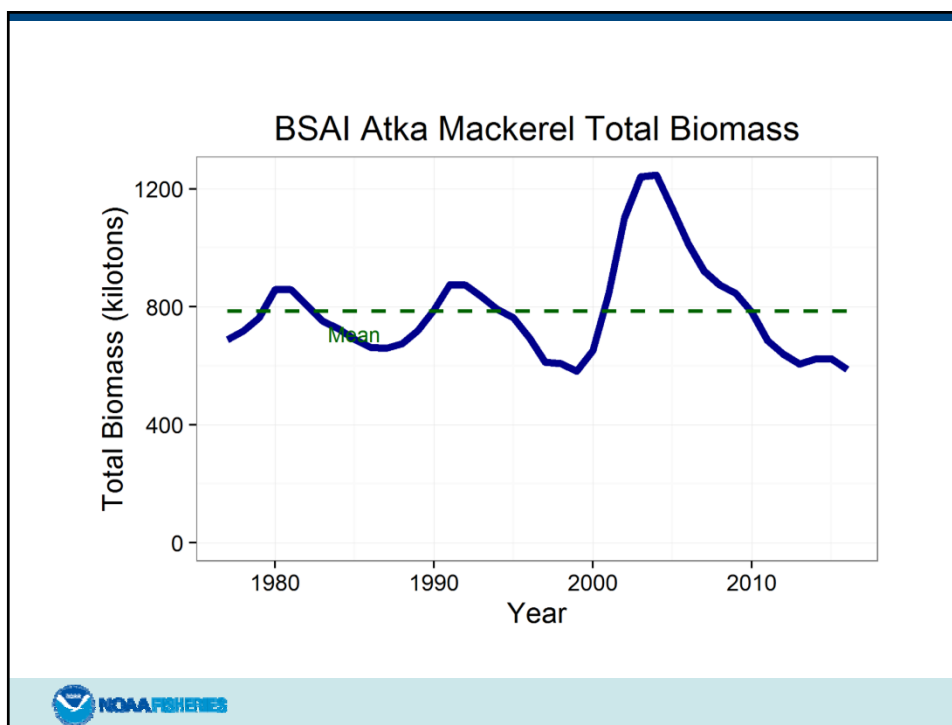
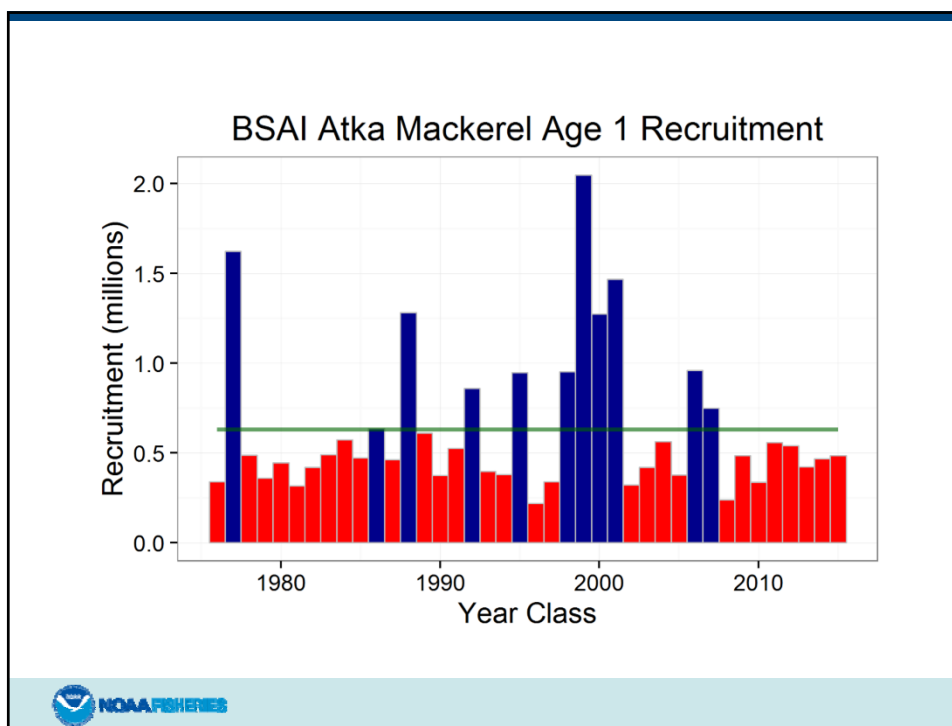


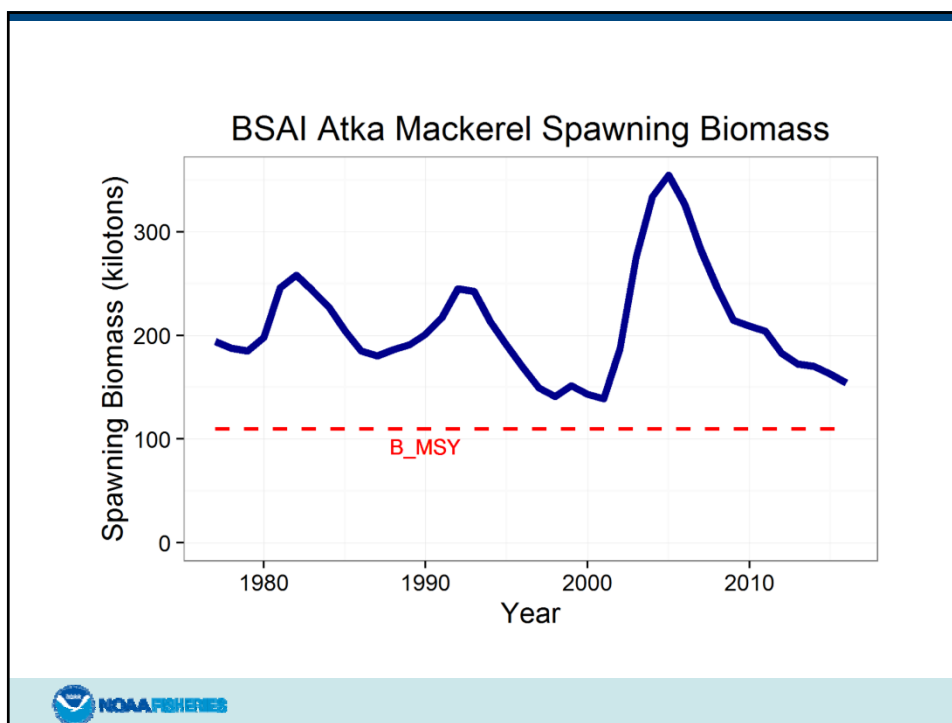
NOAA FISHERIES

U.S. Department of Commerce | National Oceanic and Atmospheric Administration | NOAA Fisheries | Page 119
This information is distributed solely for the purpose of pre-dissemination peer review under applicable information quality guidelines. It has not been formally disseminated by the National Marine Fisheries Service and should not be construed to represent any agency determination or policy.



NOAA FISHERIES





Atka mackerel, continued

Quantity	Last year	This year	Change
M	0.30	0.30	0.00
2016 tier	3a	n/a	none
2017 tier	3a	3a	none
2016 age+ biomass	672,184	n/a	-0.11
2017 age+ biomass	664,208	598,791	-0.10
2016 spawning biomass	166,407	n/a	-0.13
2017 spawning biomass	147,496	145,258	-0.02
B100%	339,135	313,220	-0.08
B40%	135,654	125,288	-0.08
B35%	118,697	109,627	-0.08
2017 FOFL	0.35	0.4	0.14
2017 FABC	0.30	0.34	0.13
2016 OFL	104,749	n/a	-0.02
2017 OFL	99,490	102,700	0.03
2016 ABC	90,340	n/a	-0.03
2017 ABC	85,840	87,200	0.02



U.S. Department of Commerce | National Oceanic and Atmospheric Administration | NOAA Fisheries | Page 124
 This information is distributed solely for the purpose of pre-dissemination peer review under applicable information quality guidelines.
 It has not been formally disseminated by the National Marine Fisheries Service and should not be construed to represent any agency determination or policy.

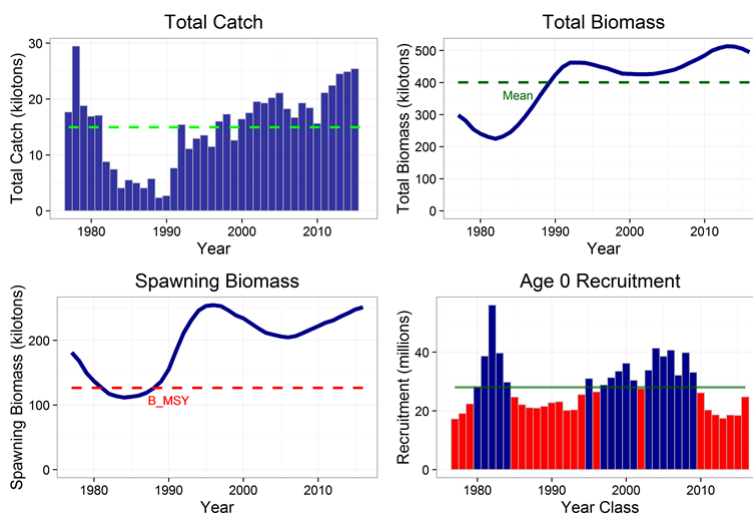
Chapter 18: skates

- Last year, this assessment was a partial update only
- New survey biomass estimates (Alaska skate):
 - EBS shelf survey biomass up 23% from 2015; up 35% from 2014
- New survey biomass estimates (other skates):
 - EBS shelf survey biomass down 6% from 2015; up 52% from 2014
 - EBS slope survey biomass down 1% from 2012
 - AI survey biomass down 34% from 2014
 - 2016 distribution of survey biomass: 36% shelf, 39% slope, 25% AI
- Model changes:
 - None (Alaska skate)
 - None (other skates)

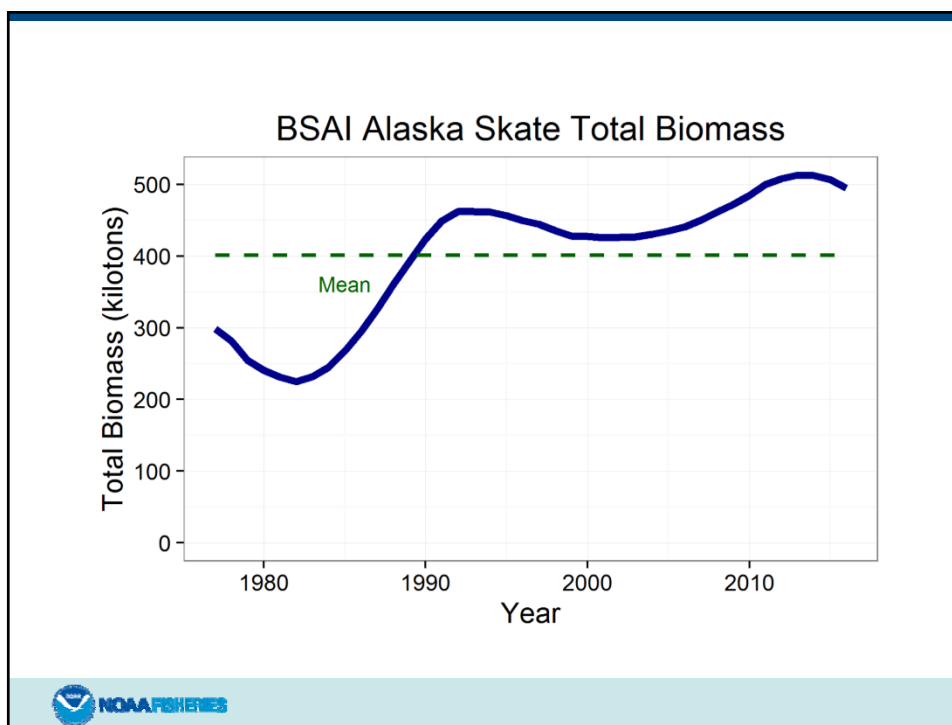
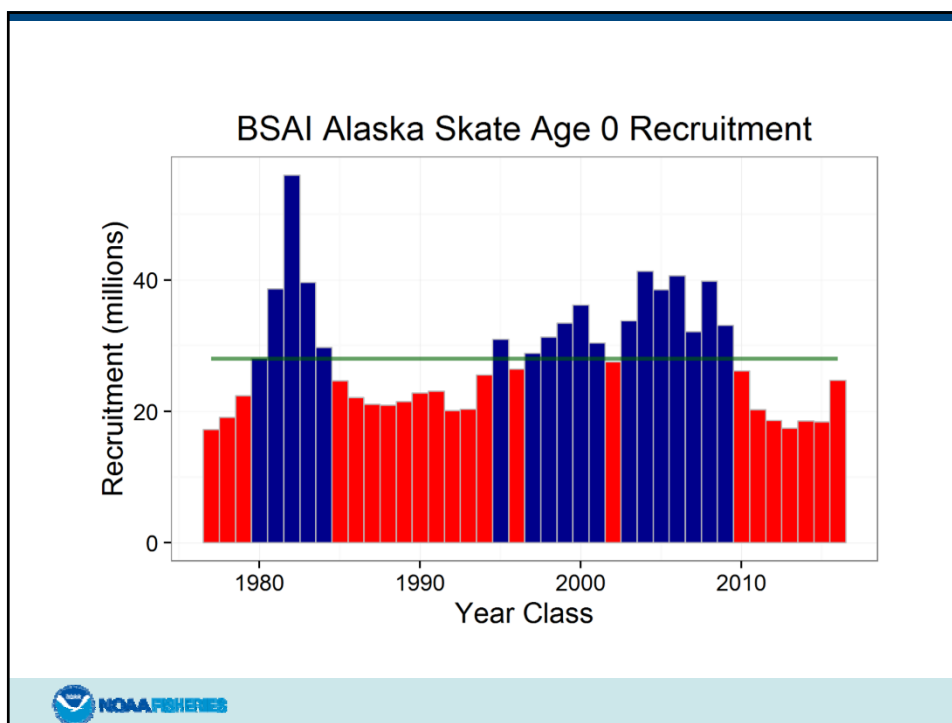


U.S. Department of Commerce | National Oceanic and Atmospheric Administration | NOAA Fisheries | Page 125
This information is distributed solely for the purpose of pre-dissemination peer review under applicable information quality guidelines. It has not been formally disseminated by the National Marine Fisheries Service and should not be construed to represent any agency determination or policy.

Skates, continued (Alaska skate)



U.S. Department of Commerce | National Oceanic and Atmospheric Administration | NOAA Fisheries | Page 126
This information is distributed solely for the purpose of pre-dissemination peer review under applicable information quality guidelines. It has not been formally disseminated by the National Marine Fisheries Service and should not be construed to represent any agency determination or policy.



Skates, continued (Alaska skate)

Quantity	Last year	This year	Change
M	0.13	0.13	0.00
2016 tier	3a	n/a	none
2017 tier	3a	3a	none
2016 age+ biomass	527,932	n/a	-0.04
2017 age+ biomass	498,546	506,921	0.02
2016 spawning biomass	115,378	n/a	-0.05
2017 spawning biomass	112,087	110,180	-0.02
B100%	186,923	180,556	-0.03
B40%	74,769	72,222	-0.03
B35%	65,423	63,195	-0.03
2017 FOFL	0.090	0.092	0.02
2017 FABC	0.077	0.079	0.03
2016 OFL	39,847	n/a	-0.02
2017 OFL	37,306	39,162	0.05
2016 ABC	34,358	n/a	-0.02
2017 ABC	32,167	33,731	0.05



NOAA FISHERIES

U.S. Department of Commerce | National Oceanic and Atmospheric Administration | NOAA Fisheries | Page 129
 This information is distributed solely for the purpose of pre-dissemination peer review under applicable information quality guidelines.
 It has not been formally disseminated by the National Marine Fisheries Service and should not be construed to represent any agency determination or policy.

Skates, continued (other skates)

Quantity	Last year	This year	Change
M	0.10	0.10	0.00
2016 tier	5	n/a	none
2017 tier	5	5	none
Biomass	103,682	100,130	-0.03
2017 FOFL	0.10	0.10	0.00
2017 FABC	0.075	0.075	0.00
2016 OFL	10,368	n/a	-0.03
2017 OFL	10,368	10,013	-0.03
2016 ABC	7,776	n/a	-0.03
2017 ABC	7,776	7,510	-0.03



NOAA FISHERIES

U.S. Department of Commerce | National Oceanic and Atmospheric Administration | NOAA Fisheries | Page 130
 This information is distributed solely for the purpose of pre-dissemination peer review under applicable information quality guidelines.
 It has not been formally disseminated by the National Marine Fisheries Service and should not be construed to represent any agency determination or policy.

Chapter 19: sculpins

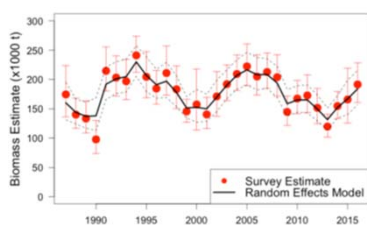
- Last year, this assessment was a partial update only
- New survey biomass estimates:
 - EBS shelf survey biomass up 14% from 2015; up 23% from 2014
 - EBS slope survey biomass down 32% from 2012
 - AI survey biomass down 21% from 2014
 - 2016 distribution of survey biomass: 91% shelf, 2% slope, 6% AI
- Model changes:
 - None



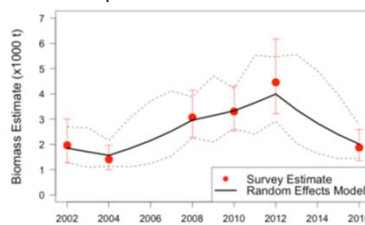
U.S. Department of Commerce | National Oceanic and Atmospheric Administration | NOAA Fisheries | Page 131
This information is distributed solely for the purpose of pre-dissemination peer review under applicable information quality guidelines. It has not been formally disseminated by the National Marine Fisheries Service and should not be construed to represent any agency determination or policy.

Sculpins, continued

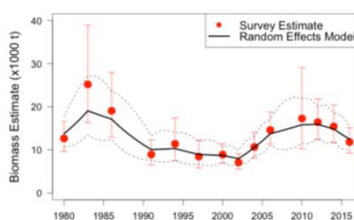
EBS shelf



EBS slope



Aleutian Islands



U.S. Department of Commerce | National Oceanic and Atmospheric Administration | NOAA Fisheries | Page 132
This information is distributed solely for the purpose of pre-dissemination peer review under applicable information quality guidelines. It has not been formally disseminated by the National Marine Fisheries Service and should not be construed to represent any agency determination or policy.

Sculpins, continued

Quantity*	Last year	This year	Change
M	0.29	0.283	-0.02
2016 tier	5	n/a	none
2017 tier	5	5	none
Biomass	180,570	199,937	0.11
2017 FOFL	0.29	0.283	-0.02
2017 FABC	0.22	0.212	-0.04
2016 OFL	52,365	n/a	0.08
2017 OFL	52,365	56,582	0.08
2016 ABC	39,725	n/a	0.07
2017 ABC	39,725	42,387	0.07

*Instantaneous rates are biomass-weighted averages

Values listed in chapter are incorrect



U.S. Department of Commerce | National Oceanic and Atmospheric Administration | NOAA Fisheries | Page 133
This information is distributed solely for the purpose of pre-dissemination peer review under applicable information quality guidelines. It has not been formally disseminated by the National Marine Fisheries Service and should not be construed to represent any agency determination or policy.

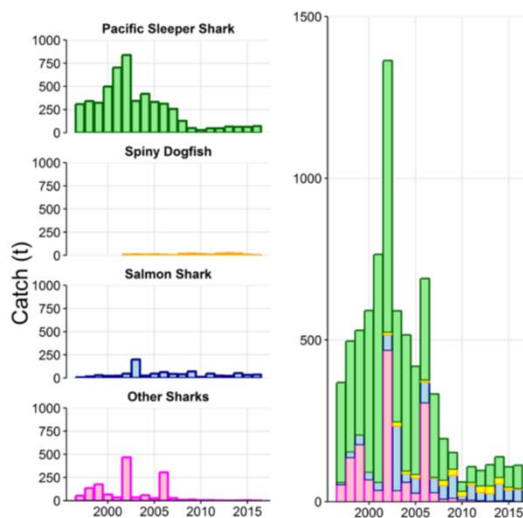
Chapter 20: sharks

- Last year, this assessment is a partial update only
- New survey biomass estimates:
 - None that are usable for setting harvest specifications
- Model changes:
 - Time period for defining maximum catch changed from 1997-2007 (maximum = 1,363 t) to 2003-2015 (maximum = 689 t)



U.S. Department of Commerce | National Oceanic and Atmospheric Administration | NOAA Fisheries | Page 134
This information is distributed solely for the purpose of pre-dissemination peer review under applicable information quality guidelines. It has not been formally disseminated by the National Marine Fisheries Service and should not be construed to represent any agency determination or policy.

Sharks, continued



NOAA FISHERIES

U.S. Department of Commerce | National Oceanic and Atmospheric Administration | NOAA Fisheries | Page 135
 This information is distributed solely for the purpose of pre-dissemination peer review under applicable information quality guidelines.
 It has not been formally disseminated by the National Marine Fisheries Service and should not be construed to represent any agency determination or policy.

Sharks, continued

Quantity	Last year	This year	Change
2016 tier	6	n/a	none
2017 tier	6	6	none
2016 OFL	1,363	n/a	-0.49
2017 OFL	1,363	689	-0.49
2016 ABC	1,022	n/a	-0.49
2017 ABC	1,022	517	-0.49



NOAA FISHERIES

U.S. Department of Commerce | National Oceanic and Atmospheric Administration | NOAA Fisheries | Page 136
 This information is distributed solely for the purpose of pre-dissemination peer review under applicable information quality guidelines.
 It has not been formally disseminated by the National Marine Fisheries Service and should not be construed to represent any agency determination or policy.

Chapter 21: squids

- New data: none that relate directly to harvest specs
- Model changes/alternatives: none
- Features of the assessment:
 - The introduction contains expanded information regarding the ecology of the different species in the complex
 - The fishery section includes a discussion of fishing effort during the early part of the catch history and the implications for basing catch limits on historical catch
 - The analytical approach section includes a discussion of alternative approaches to harvest recommendations that have been considered for BSAI squids
 - A brief mention of environmental influences on squid has been added to the introduction (temperature affects on growth)



U.S. Department of Commerce | National Oceanic and Atmospheric Administration | NOAA Fisheries | Page 137
 This information is distributed solely for the purpose of pre-dissemination peer review under applicable information quality guidelines.
 It has not been formally disseminated by the National Marine Fisheries Service and should not be construed to represent any agency determination or policy.

Squids, continued

Quantity	Last year	This year	Change
2016 tier	6	n/a	none
2017 tier	6	6	none
2016 OFL	6,912	n/a	0.00
2017 OFL	6,912	6,912	0.00
2016 ABC	5,184	n/a	0.00
2017 ABC	5,184	5,184	0.00



U.S. Department of Commerce | National Oceanic and Atmospheric Administration | NOAA Fisheries | Page 138
 This information is distributed solely for the purpose of pre-dissemination peer review under applicable information quality guidelines.
 It has not been formally disseminated by the National Marine Fisheries Service and should not be construed to represent any agency determination or policy.

Chapter 22: octopus

- Last year, this assessment was a partial update only
- New survey biomass estimates:
 - None that are usable for setting harvest specifications
- Other new data:
 - Pacific cod diet data from 2007-2015 (9,000 stomachs)
- Model changes:
 - None



U.S. Department of Commerce | National Oceanic and Atmospheric Administration | NOAA Fisheries | Page 139
This information is distributed solely for the purpose of pre-dissemination peer review under applicable information quality guidelines. It has not been formally disseminated by the National Marine Fisheries Service and should not be construed to represent any agency determination or policy.

Octopus, continued

Quantity	Last year	This year	Change
2016 tier	6	n/a	none
2017 tier	6	6	none
2016 OFL	3,452	n/a	0.38
2017 OFL	3,452	4,769	0.38
2016 ABC	2,589	n/a	0.38
2017 ABC	2,589	3,577	0.38



U.S. Department of Commerce | National Oceanic and Atmospheric Administration | NOAA Fisheries | Page 140
This information is distributed solely for the purpose of pre-dissemination peer review under applicable information quality guidelines. It has not been formally disseminated by the National Marine Fisheries Service and should not be construed to represent any agency determination or policy.

Questions?