



**NOAA**  
**FISHERIES**

Alaska Fisheries  
Science Center

# Assessment of Pacific cod in the Aleutian Islands

Grant Thompson and Wayne Palsson

November 14, 2017

# Team and SSC comments

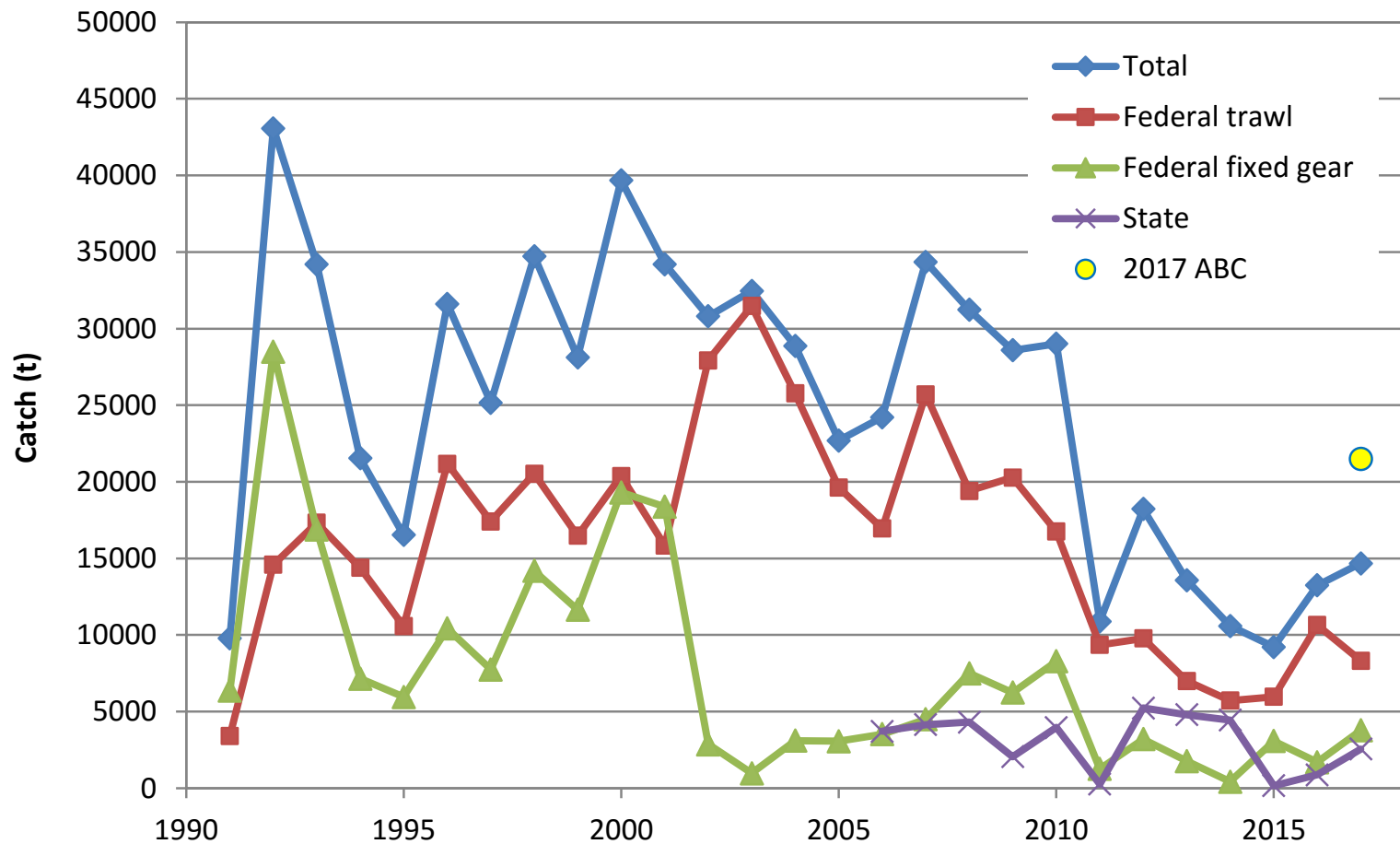


# Comments specific to this assessment

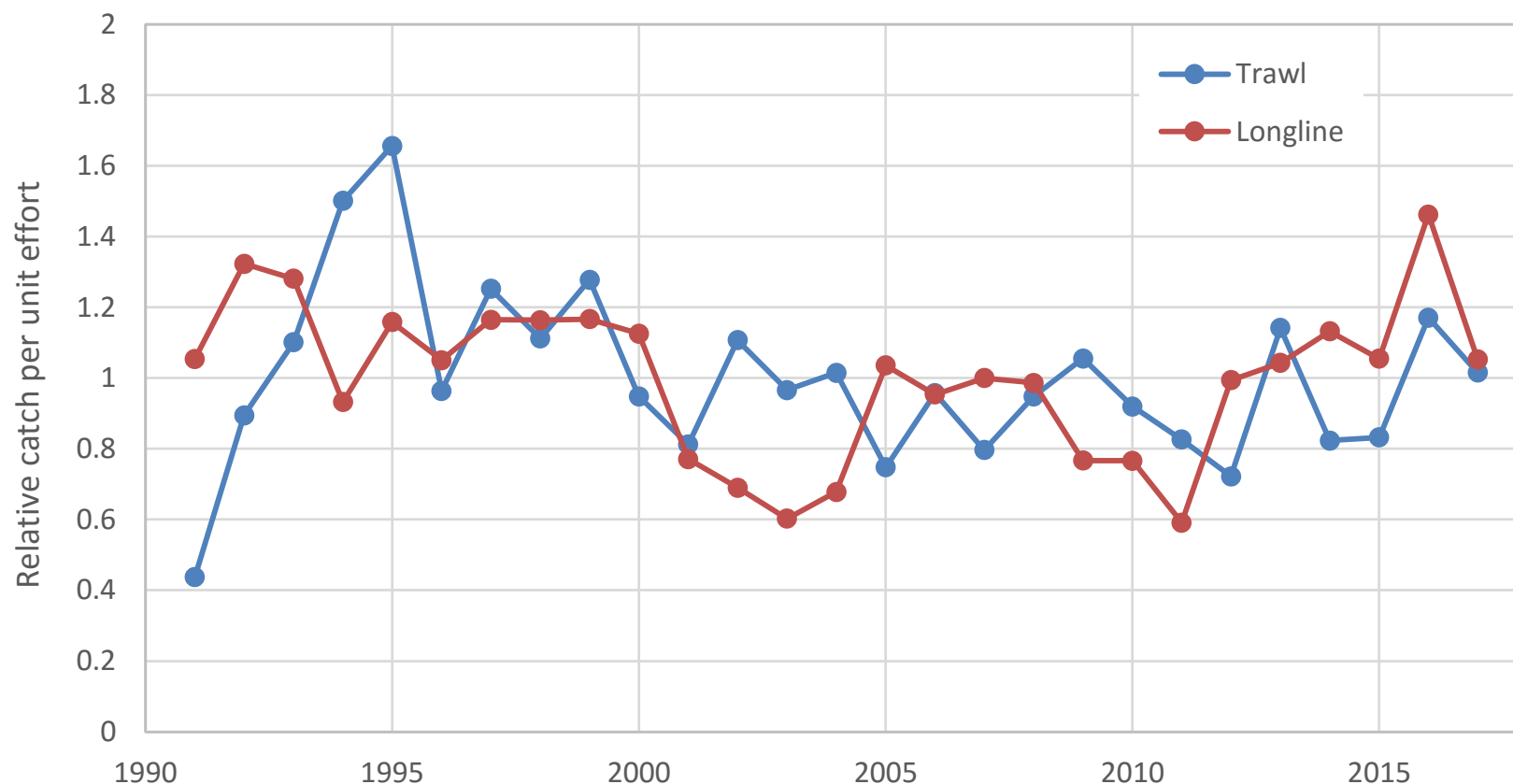
- Total of 17 comments considered by the Subcommittee
  - 4 from Subcommittee, 3 from full Team, and 10 from SSC
- In the end, however the Subcommittee did not recommend any models or non-model analyses, so that more time could be devoted to the EBS Pcod assessment

# Data highlights

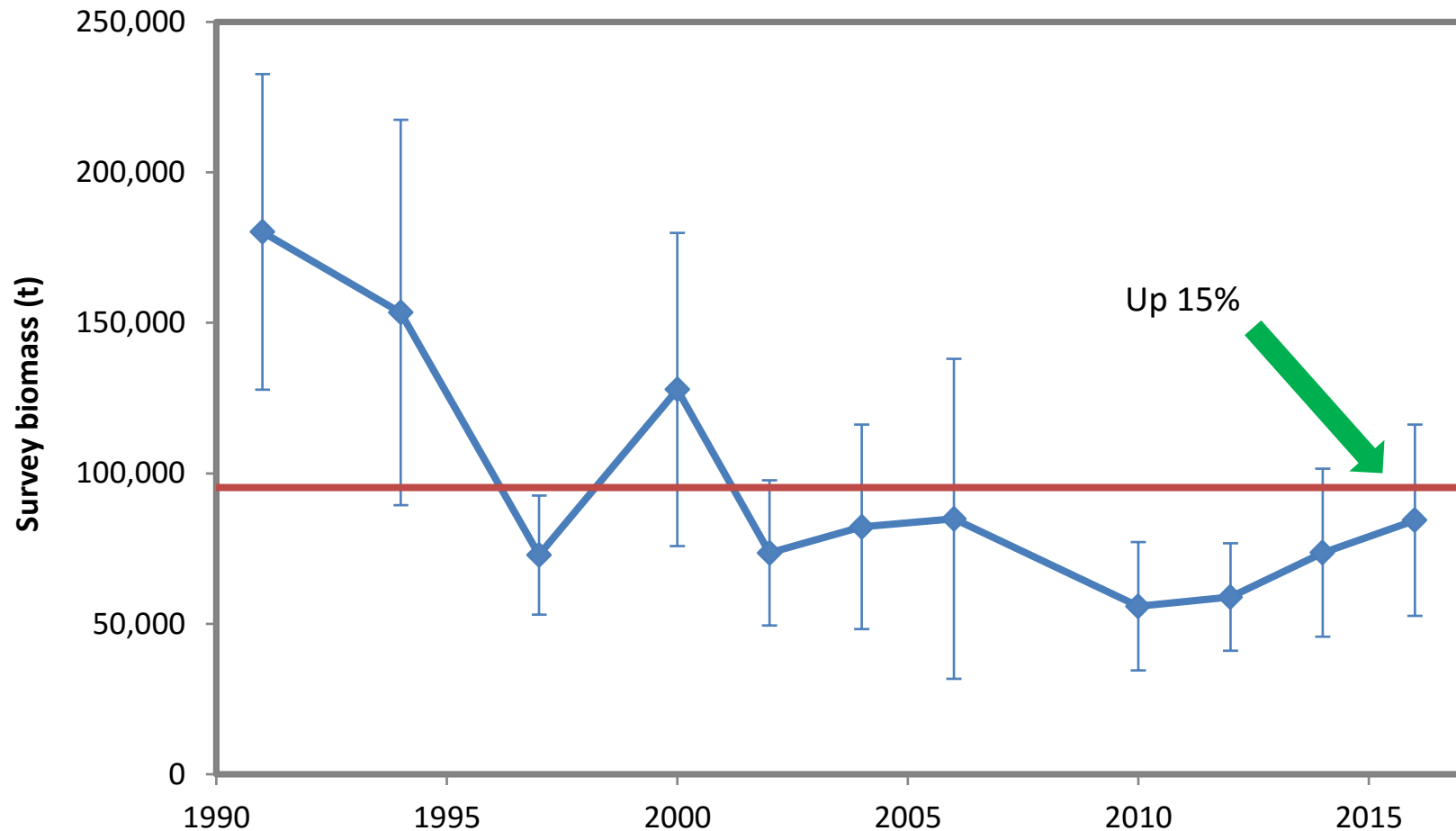
# Catch history (2017 data are incomplete)



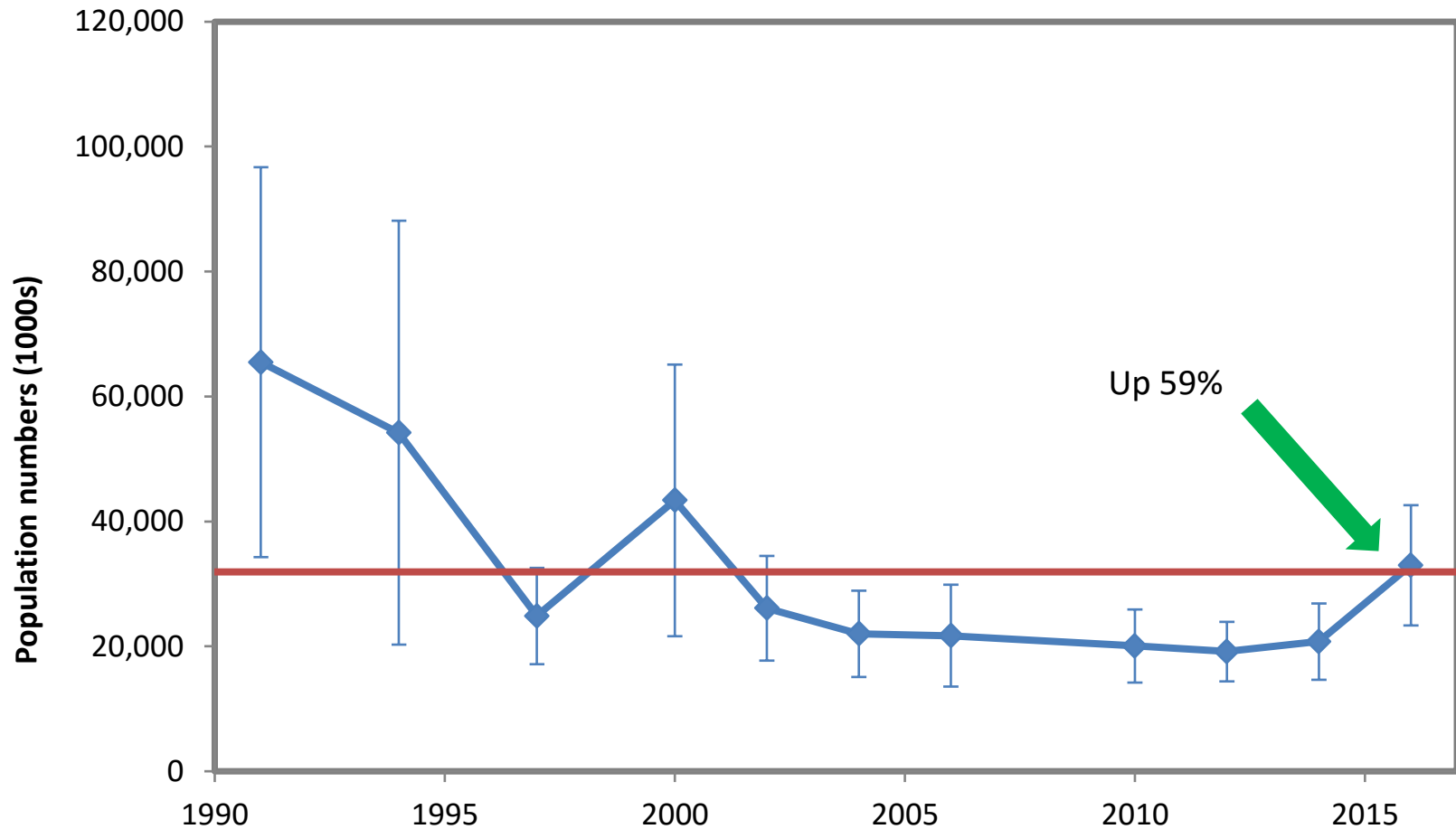
# Fishery CPUE (2017 data are incomplete)



# Survey biomass history (same as last year)



# Survey numbers history (same as last year)

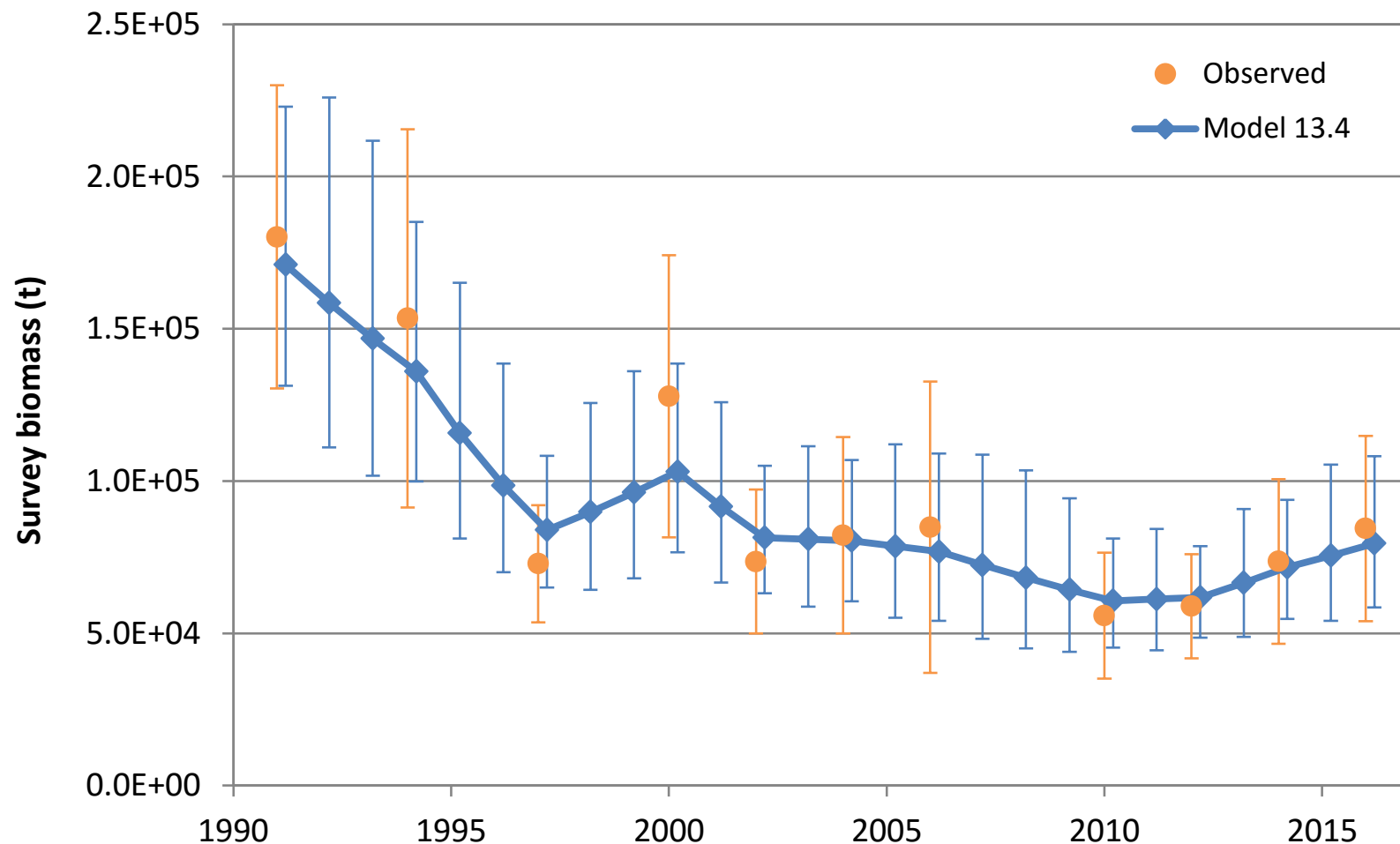


# Results



**NOAA FISHERIES**

# Fit to survey biomass: figure



# Fit to survey biomass: statistics

- Log-scale process error standard deviation: 0.17
  - With a CV of 0.37
- Root-mean-squared error: 0.103
  - Compare to average log-scale standard error (data): 0.182
- Mean normalized residual: 0.056
- Standard deviation of normalized residuals: 0.625
- Correlation (data:model): 0.975

# Summary table

- Estimate of  $M$  updated based on EBS Model 17.2

Quantity	As estimated or <i>specified last</i> year for:		As estimated or <i>recommended this</i> year for:	
	2017	2018	2018	2019
$M$ (natural mortality rate)	0.36	0.36	0.38	0.38
Tier	5	5	5	5
Biomass (t)	79,600	79,600	79,600	79,600
$F_{OFL}$	0.36	0.36	0.38	0.38
$maxF_{ABC}$	0.27	0.27	0.285	0.285
$F_{ABC}$	0.27	0.27	0.285	0.285
OFL (t)	28,700	28,700	30,200	30,200
maxABC (t)	21,500	21,500	22,700	22,700
ABC (t)	21,500	21,500	22,700	22,700
Status	As determined <i>last</i> year for:		As determined <i>this</i> year for:	
	2015	2016	2016	2017
Overfishing	No	n/a	No	n/a