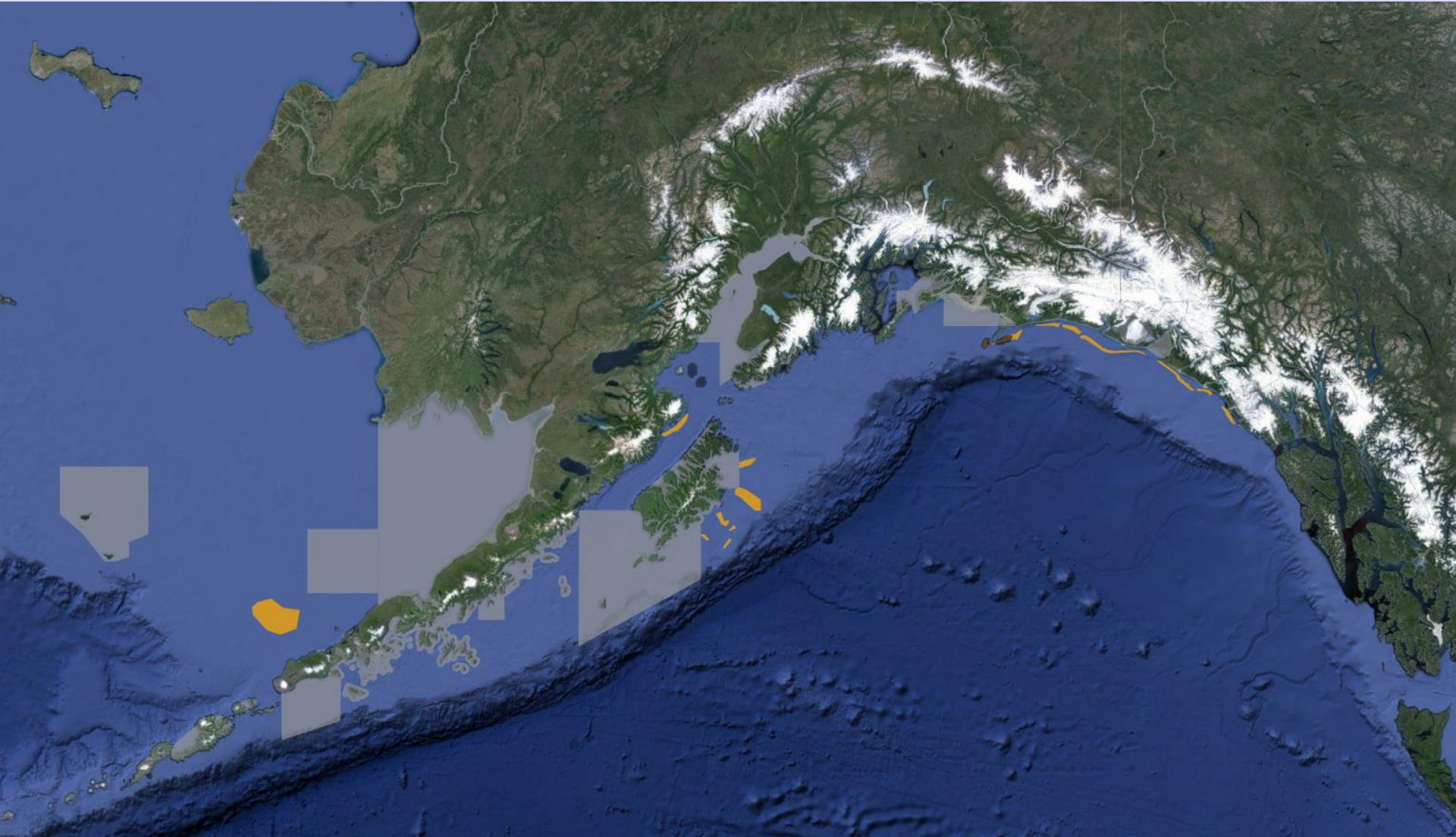


STOCK ASSESSMENT AND FISHERY EVALUATION REPORT FOR THE WEATHERVANE SCALLOP FISHERY OFF ALASKA

Compiled by the Scallop Plan Team, March 2018

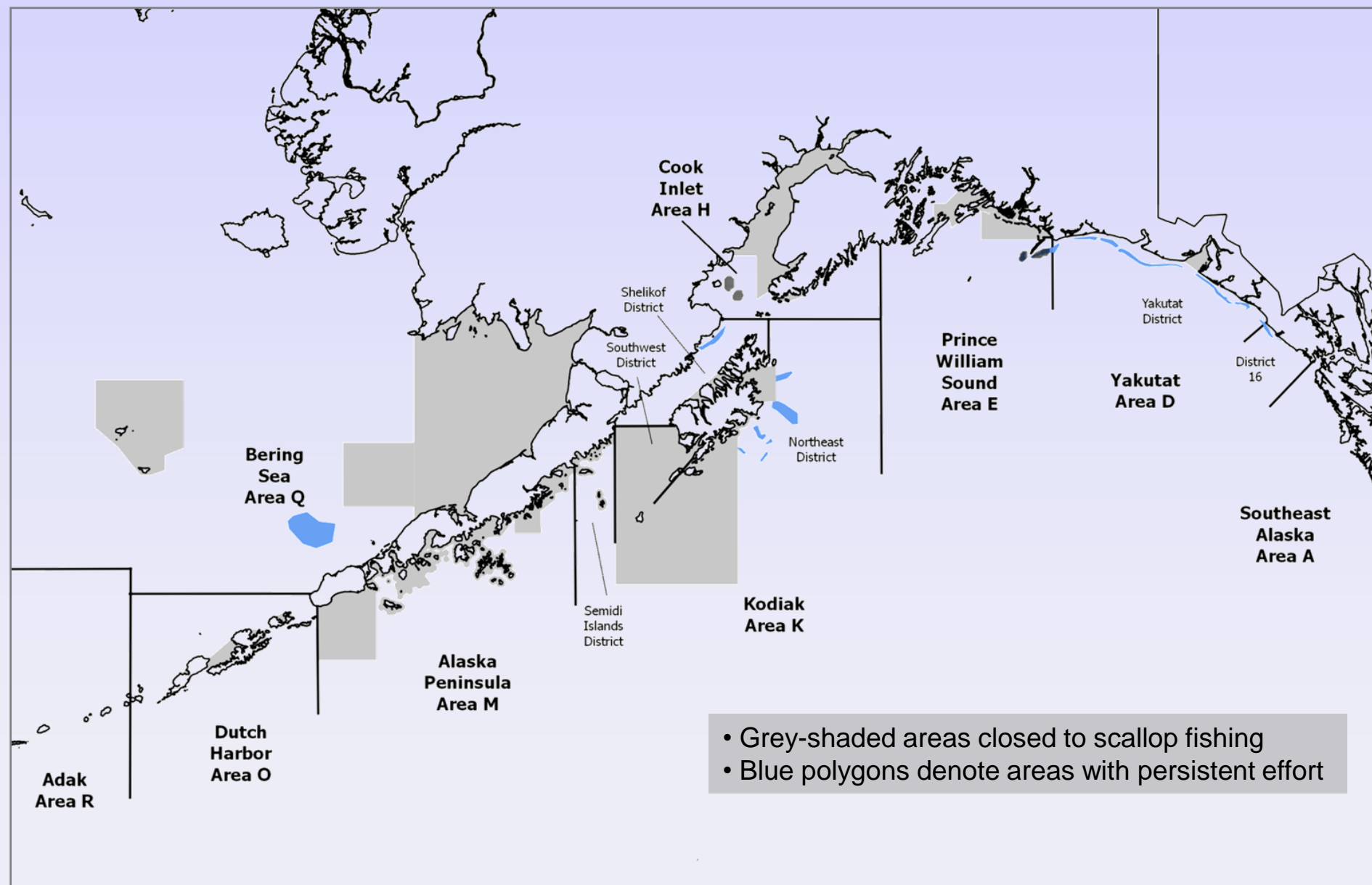


- Fishery Overview
- Management Overview
- 2017 Assessment Results
- Recent Fishery Performance
- Program Updates

Fishery Overview



Weathervane Scallop Fishing Areas



Weathervane Scallop Fishery Overview

Federal Waters

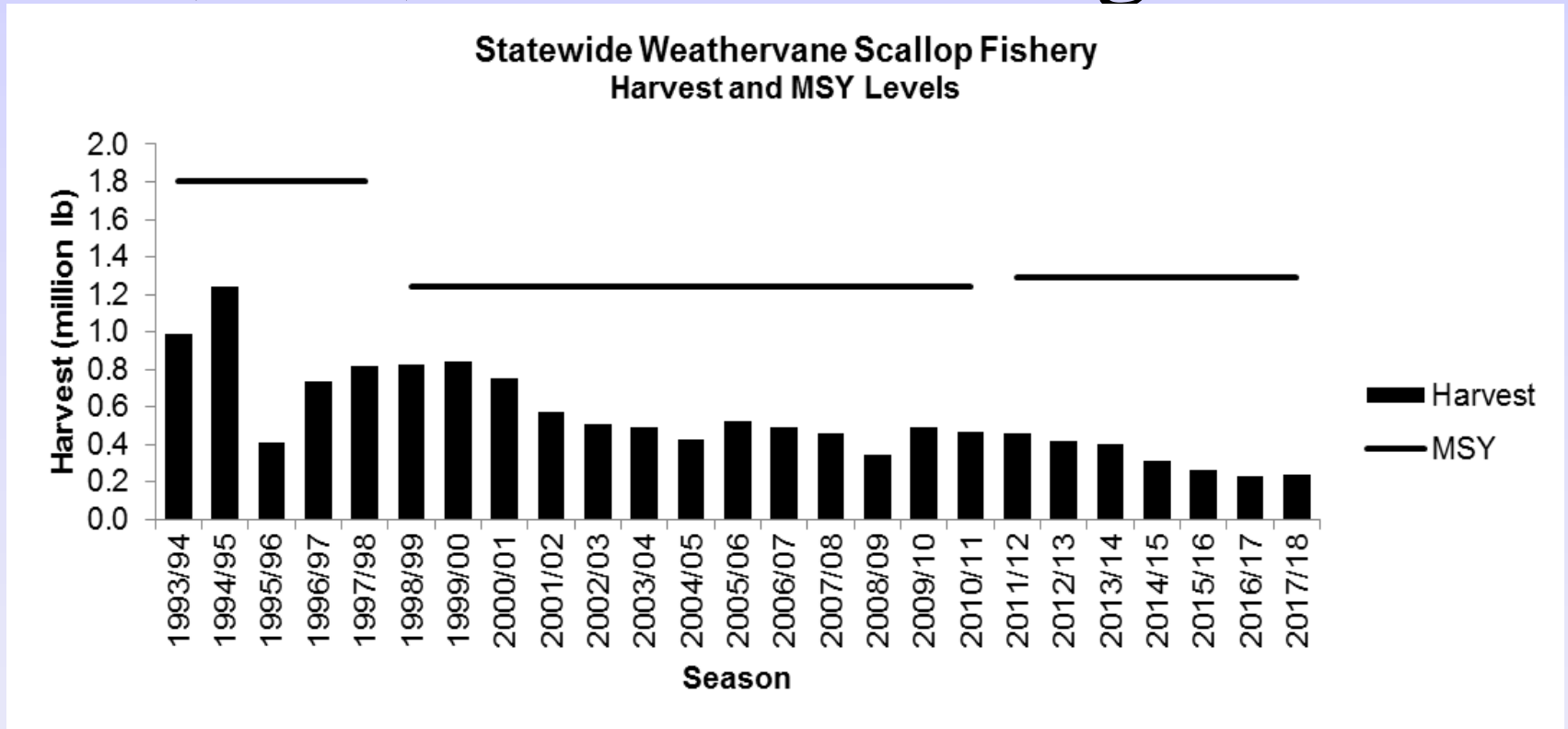
- 9 Federal LLPs
 - 7 LLPs permitted to deploy two 15 ft dredges
 - 2 vessels permitted to deploy two 10 ft dredges
 - Cook Inlet: single 6 ft dredge

State waters

- Open access state water fishery beginning in 2014
- State waters closed to scallop fishing in many places
- Known scallop beds in state waters not closed to scallop fishing: District 16, Yakutat District, Area E (Kayak Island), Kodiak Shelikof District, and Area O (Dutch Harbor)



MSY, OY, and Overfishing Definition



- MSY = 1.29 million lb scallop meats
- MSY definition based on average 1990-1997 harvest with 1995 excluded
- In absence of spawning biomass estimate the default OFL is the MSY of 1.29 million lb of shucked meats
- maxABC = 90% of OFL
- SPT recommendation for ABC = 1.161 mil lb (90% of OFL) for 2016/17

Management Overview

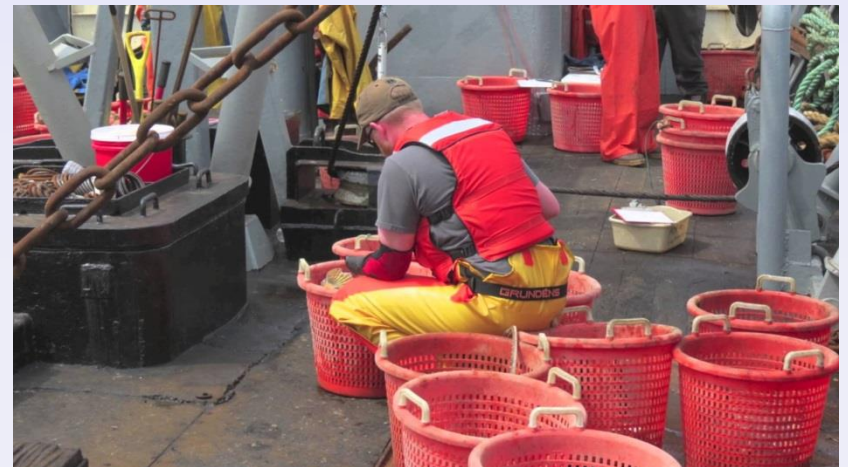


Stock Assessment

- Pre 2016
 - 5% of harvest comes from locations with fishery independent assessment
 - 95% of harvest managed from fishery dependent data sources
- Post 2016
 - Statewide survey to cover Shelikof Strait and Yakutat area biennially (61% of 10 mean year harvest)

Observer Program

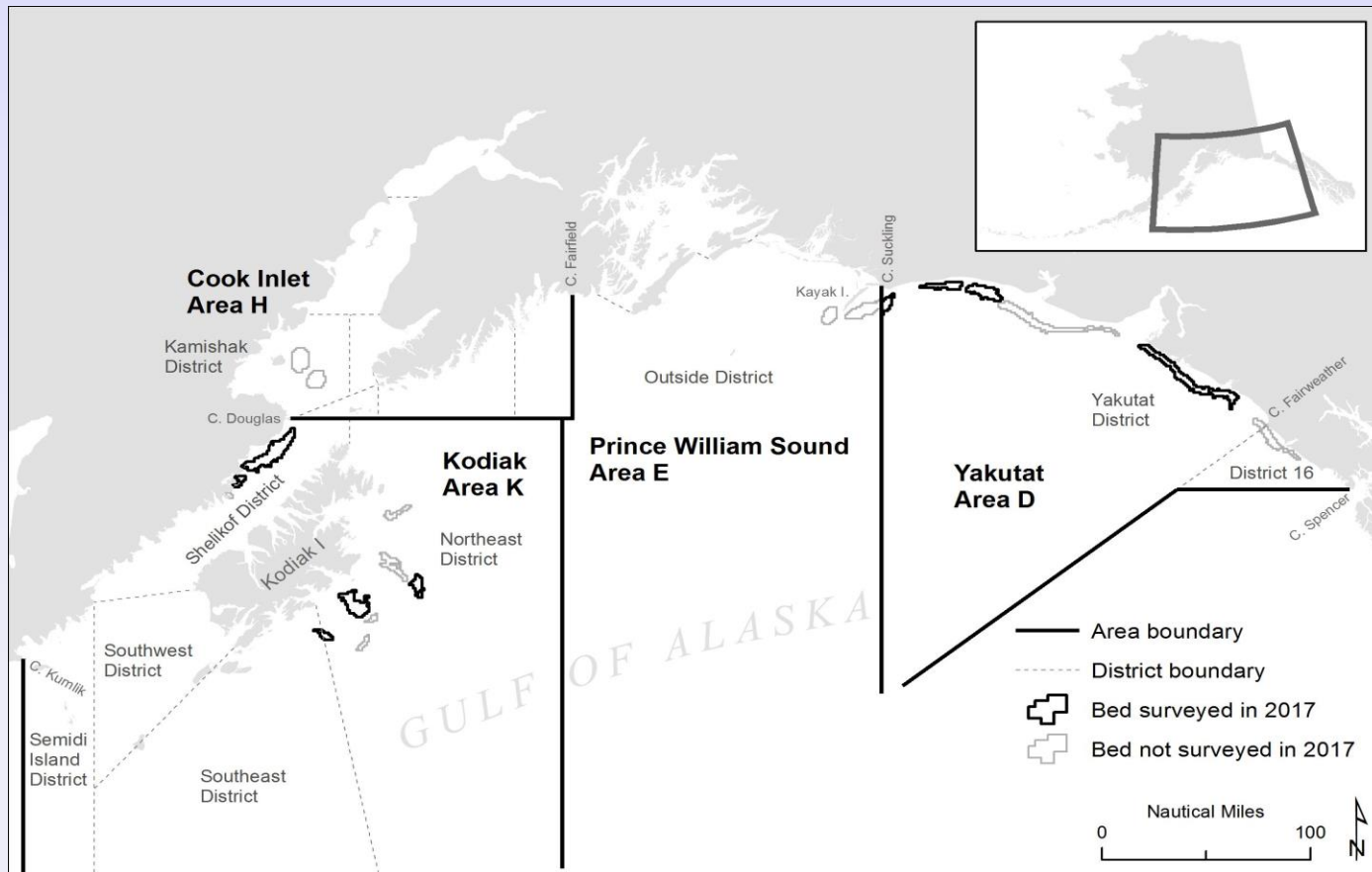
- 100% mandatory observer coverage (except in Cook Inlet)
 - CPUE
 - Shell height
 - Age
 - Discard rates & condition
 - Catch composition
 - Harvest location
 - Harvest depth
 - Bycatch



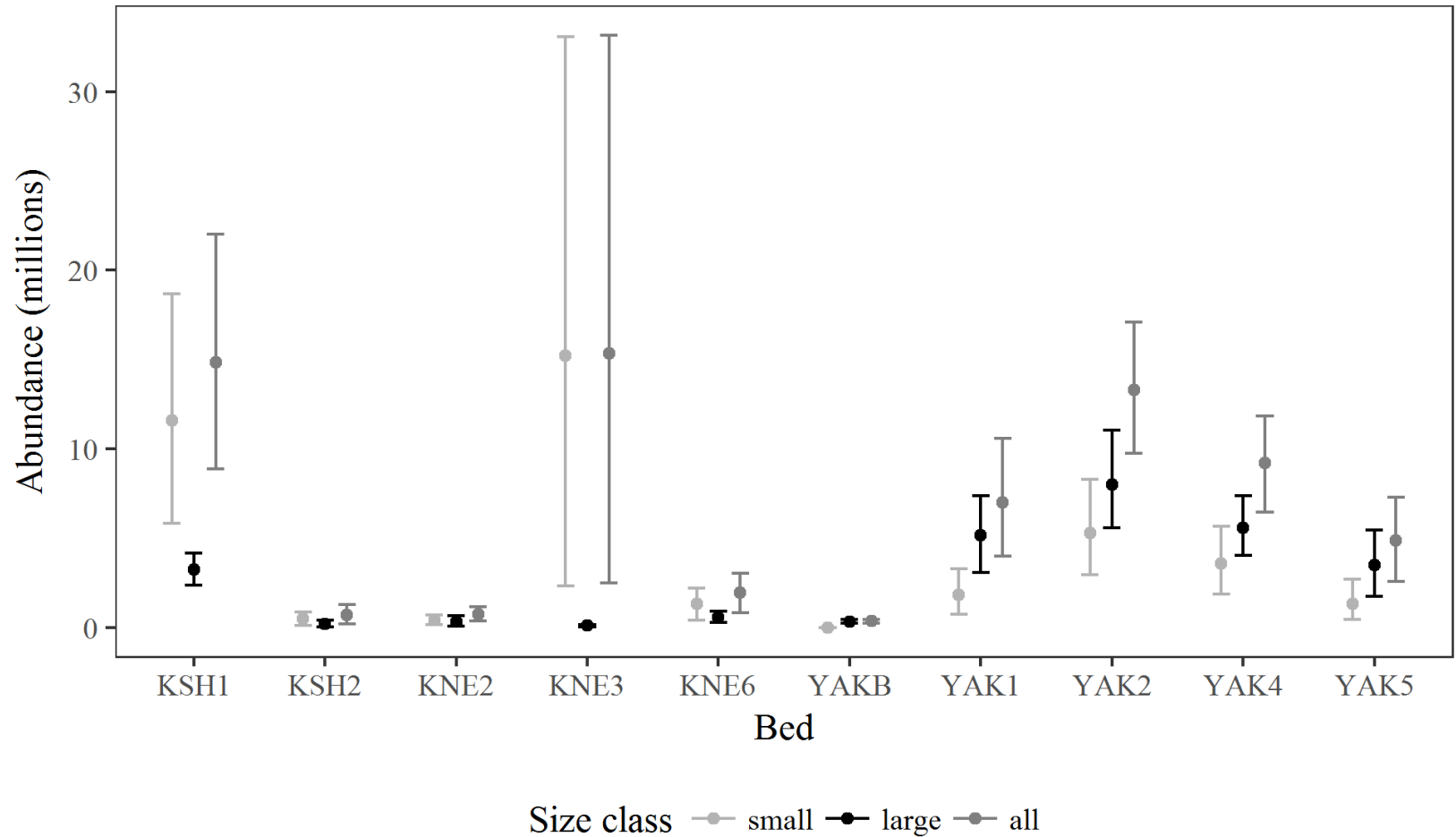
2017 Assessment Results

(see SAFE Chapter 2)

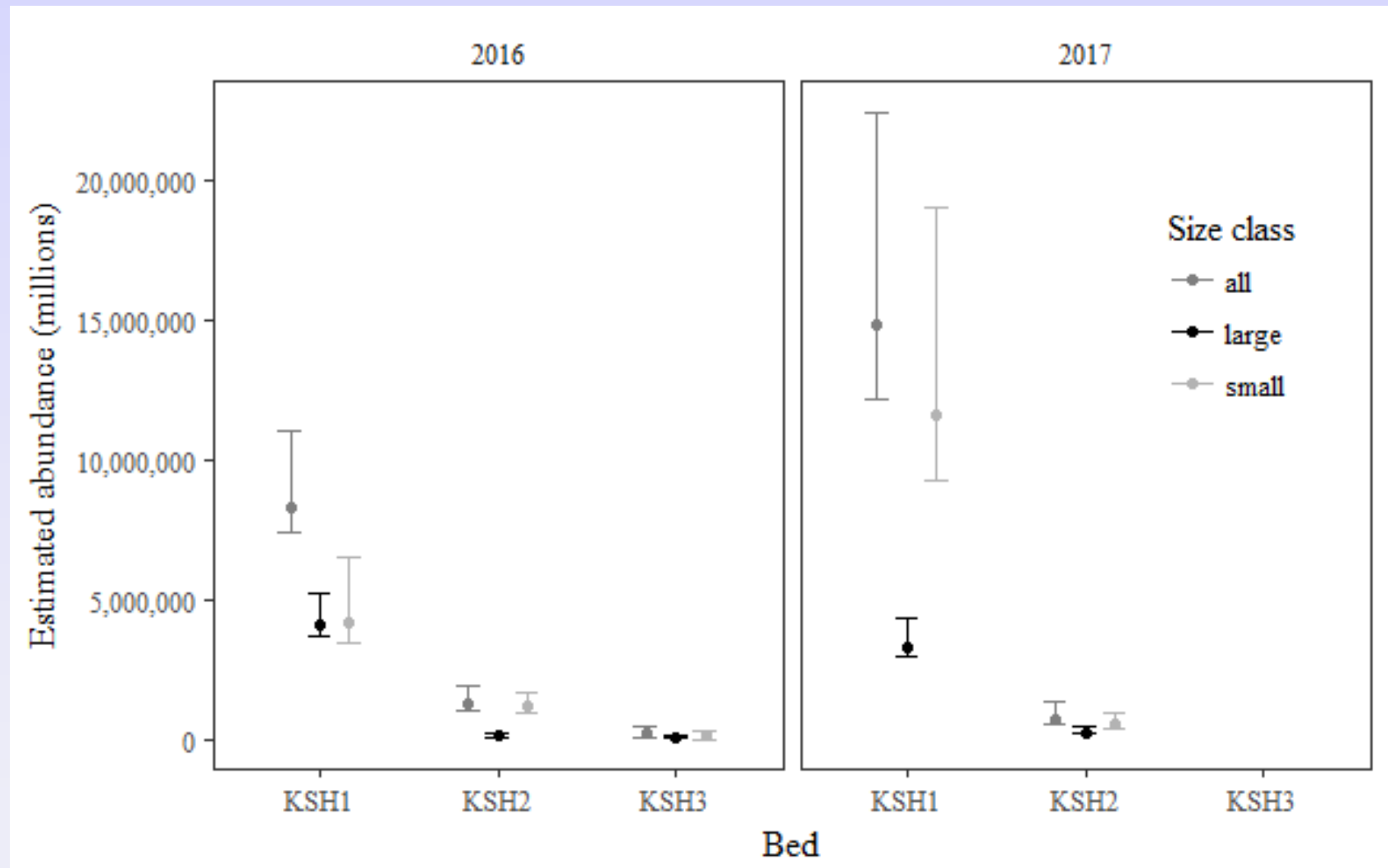
- Surveyed Yakutat, Shelikof, and Kodiak Northeast Districts



Abundance Estimate



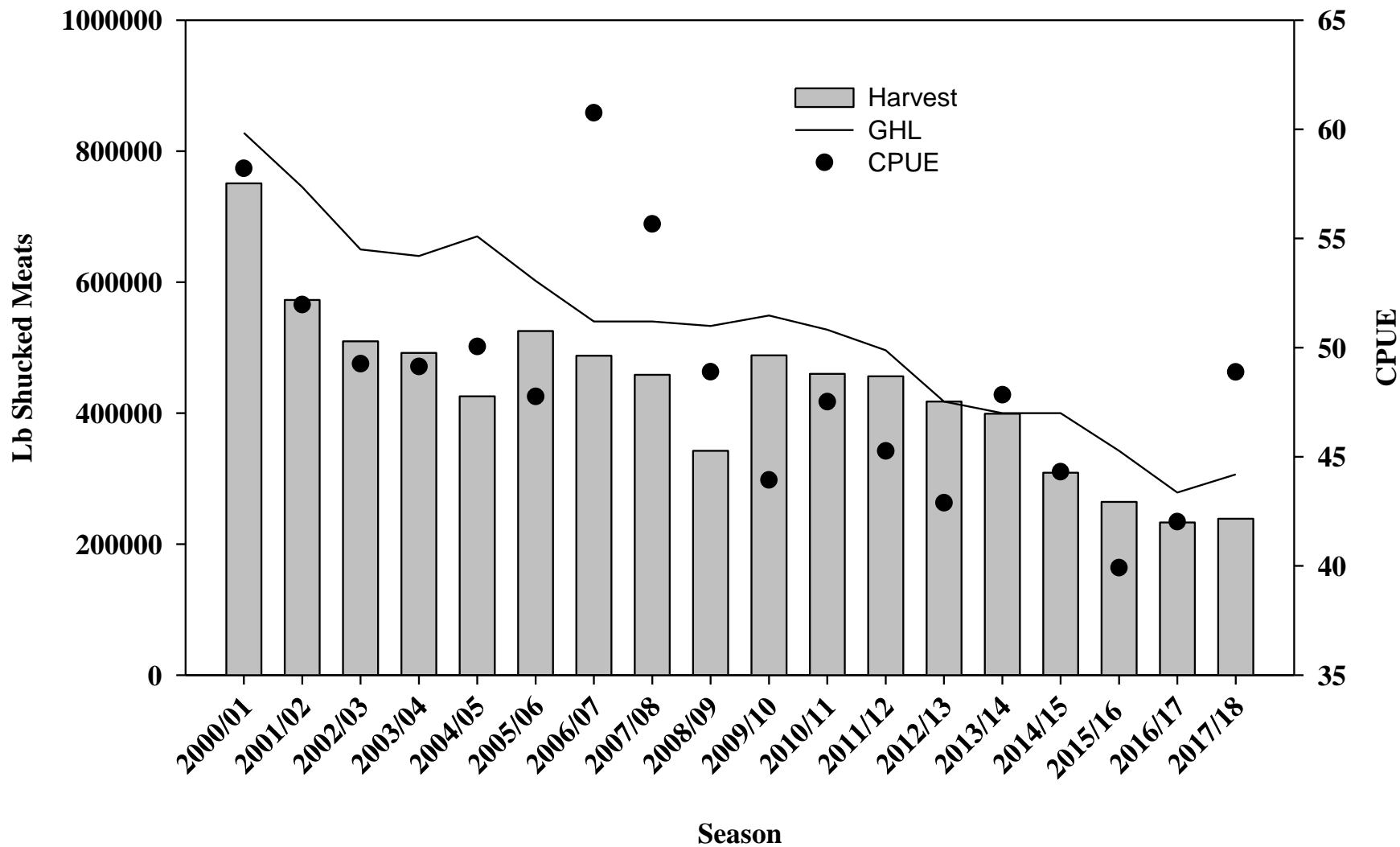
Abundance Comparison



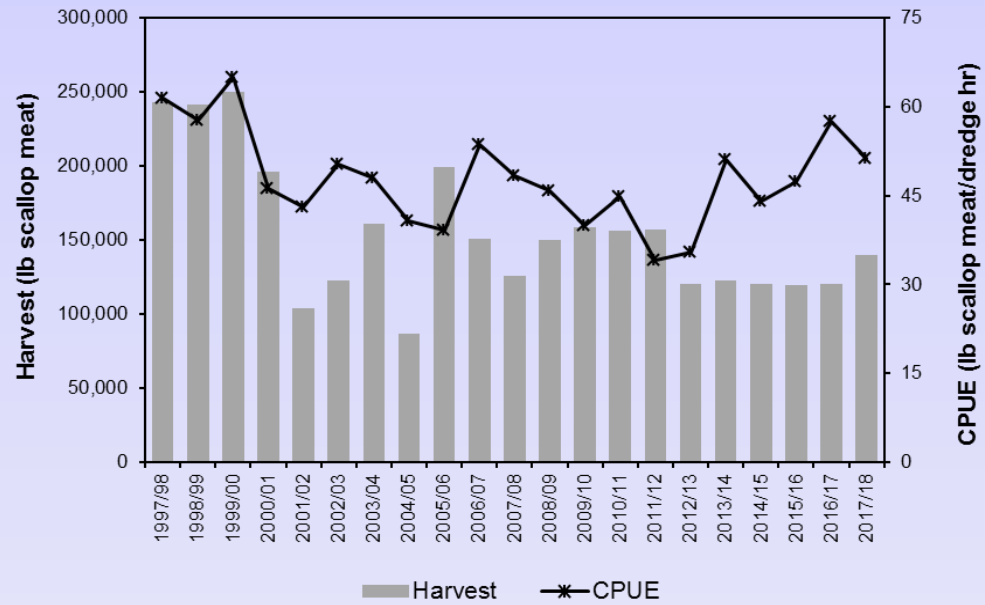
Recent Fishery Performance



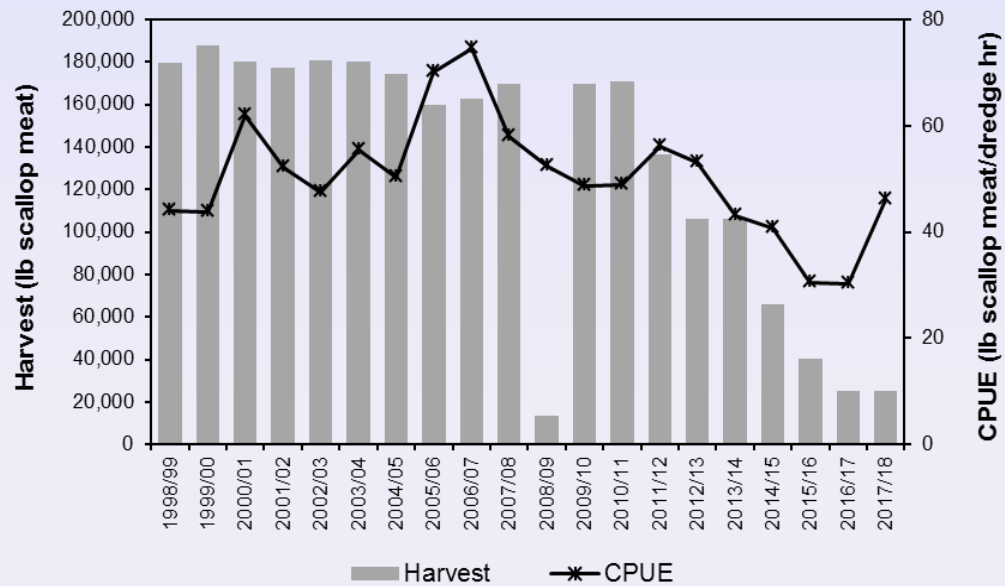
Statewide Harvest



Yakutat District



Kodiak Shelikof District



2016/17 Scallop Fishery Tanner Crab Bycatch

SAFE Table 3-4

Area/District	Chionoecetes bycatch cap	Est number crab	% of cap	Est weight (lb) ^a
Yakutat District	NE	933	NA	11
Yakutat District 16	NE	0	NA	0
Prince William Sound	1,561	180	11.5	1
Cook Inlet	3,933	306	7.8	51
Kodiak Northeast District	20,816	9,063	43.5	2,400
Kodiak Shelikof District	43,477	3,322	7.6	1,674
Kodiak Southwest District	12,000	7,868	56.6	2,597
Alaska Peninsula Unimak Bight District	12,000	3,266	27.2	549
Dutch Harbor	10,000	363	3.6	56
Bering Sea <i>C. bairdi</i>	260,000	11,862	4.6	9,015
Bering Sea <i>C. opilio</i> and hybrids	300,000	17,026	5.7	10,600
Statewide total	663,787	54,407	8.2	27,029

Commercial Weathervane Scallop Real Wholesale Value

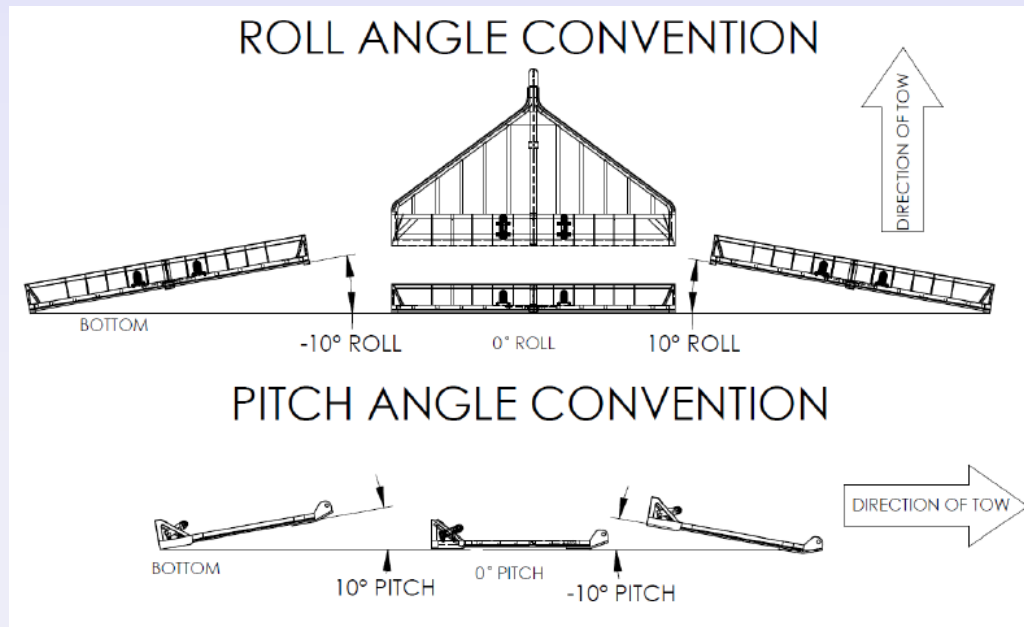
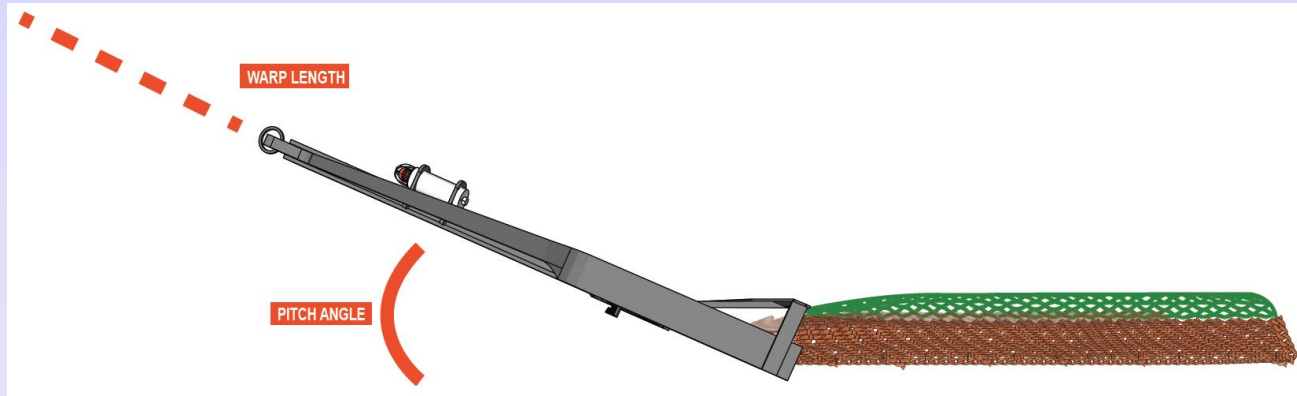
SAFE Table 5-1

Year	Vessels	Catch (lb shucked meats) ^a	Nominal Average Price / lb	Inflation Factor ^b	Real Average Price/lb	Real Wholesale Value
2004/05	5	425,477	\$5.50	1.10	\$6.05	\$2,574,136
2005/06	5	525,357	\$7.58	1.34	\$10.16	\$5,336,156
2006/07	4	487,473	\$7.86	1.24	\$9.75	\$4,751,107
2007/08	4	458,313	\$5.94	1.24	\$7.37	\$3,375,750
2008/09	4	342,434	\$6.34	1.33	\$8.43	\$2,887,472
2009/10	3	488,059	\$6.48	1.16	\$7.52	\$3,668,642
2010/11	3	459,759	\$8.35	1.05	\$8.77	\$4,030,937
2011/12	4	456,058	\$10.39	1.16	\$12.05	\$5,496,593
2012/13	4	417,551	\$10.63	0.97	\$10.31	\$4,305,410
2013/14	4	399,134	\$12.25	0.98	\$12.01	\$4,791,604
2014/15	4	308,888	\$12.39	1.02	\$12.64	\$3,903,665
2015/16	3	264,316	\$12.22	0.94	\$11.49	\$3,036,145
2016/17	2	233,003	\$12.53	1.00	\$12.53	\$2,919,528
2017/18 ^c	2	238,710	\$11.54	1.00	\$11.54	\$2,754,713
10-Year Average	3	360,791	\$10.31		\$10.73	\$3,779,471

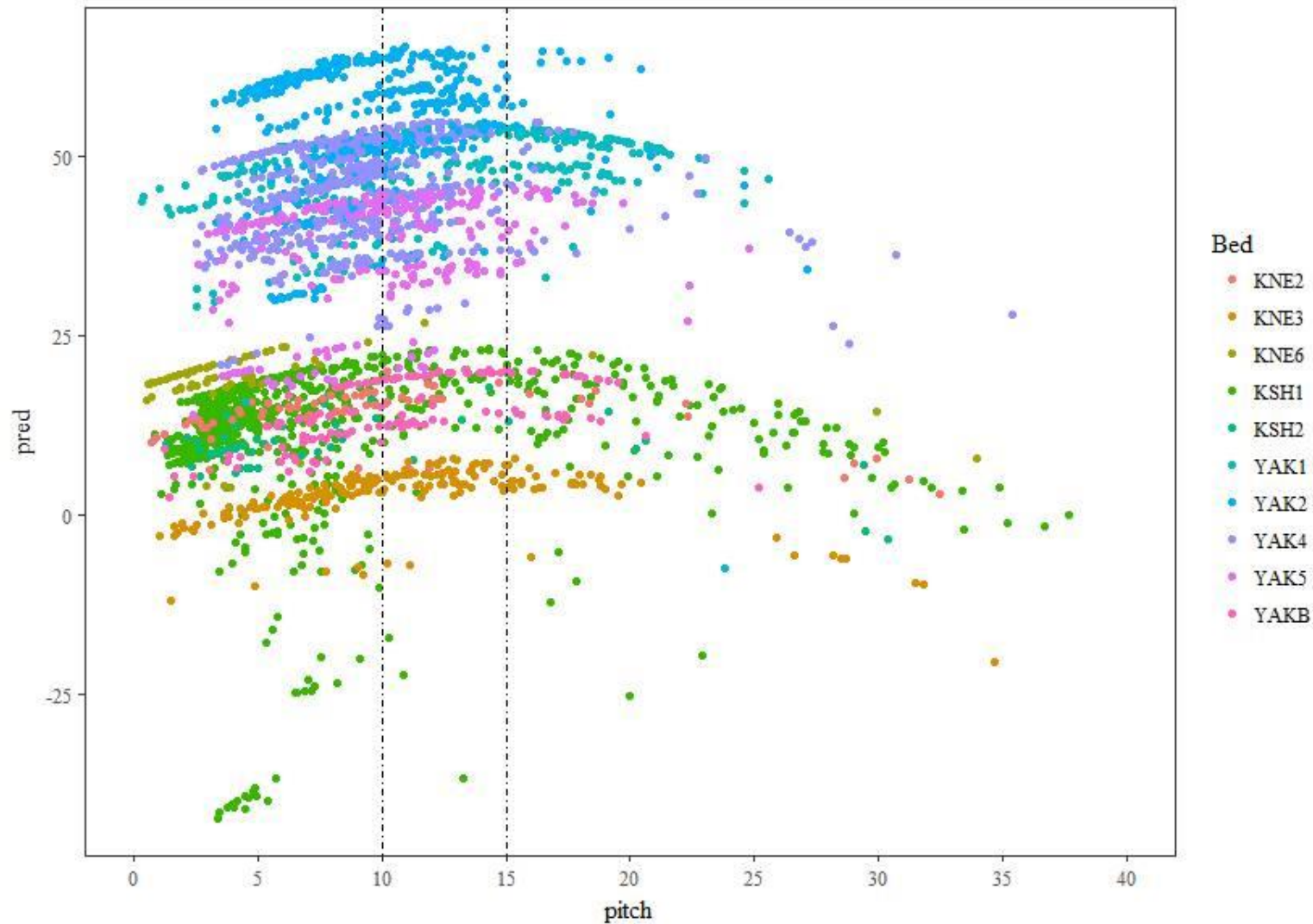
Program Updates



Survey Dredge Angle Standardization

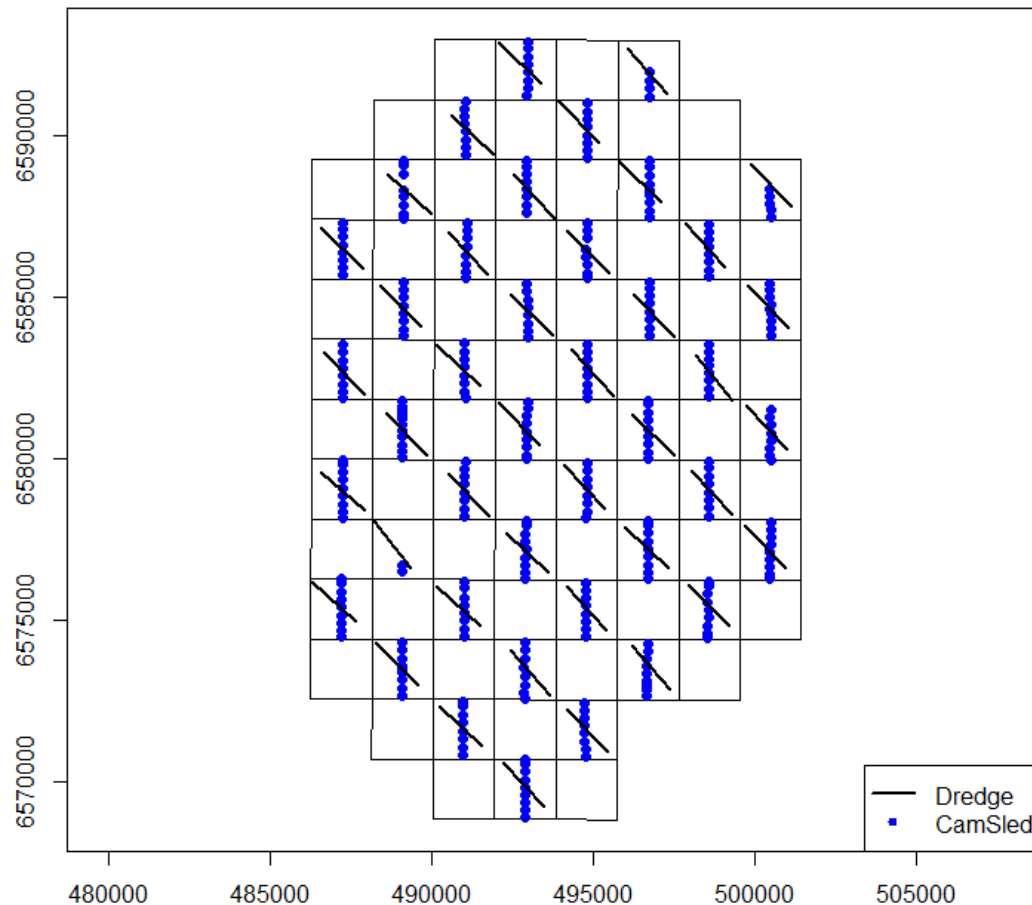


Survey Dredge Angle Standardization

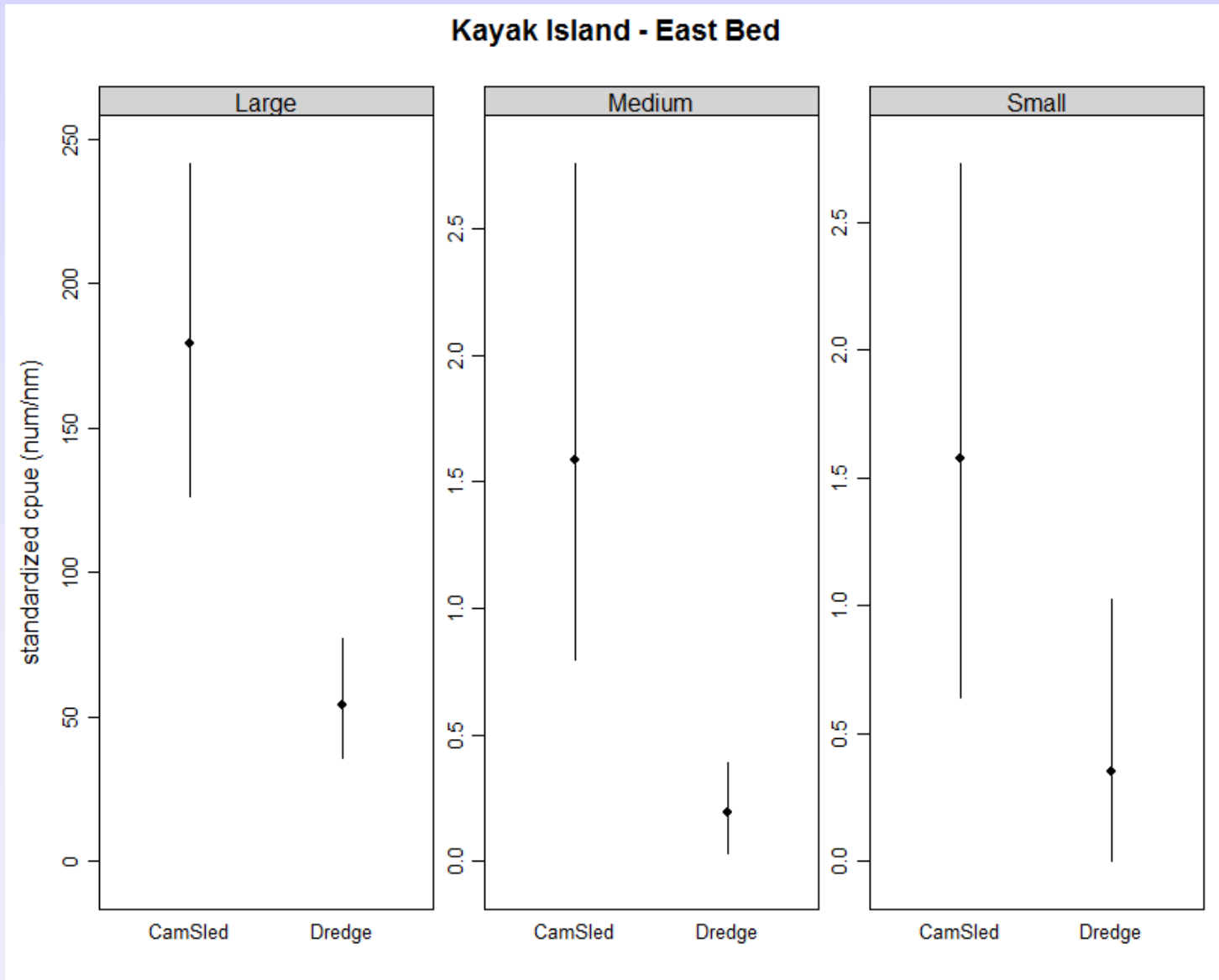


Dredge Efficiency Estimation

(Kamshak Bay 2007 and Kayak Island 2008)



Dredge Efficiency Estimation



Dredge Efficiency Estimation

Scallop Size	Dredge % of Camsled		CV Dredge		CV Camsled	
	Kamishak	Kayak	Kamishak	Kayak	Kamishak	Kayak
Small	5%	*	>50%	*	>50%	*
Medium	77%	*	27%	*	17%	*
Large	73-76%	30-36%	13%	16%	13%	20%

Thank You



Additional Harvest Limitation Mechanisms

- Minimum performance standards

Area	Minimum Performance Standard (CPUE)	Basis Year
Yakutat Area		
Yakutat	34	2011/12
Kodiak Area		
<i>Northeast District</i>		
Statistical Area 525630	45	2005/06
Statistical Area 525702	52	2002/03
Remainder of NE District	43	2005/06
<i>Shelikof District</i>		
Combined North/South Bed	47	2003/04
Bristol Bay-Bering Sea	43	2004/05 - 2009/10 ^a

^a Based on average CPUE during the 2004/05 to 2009/10 seasons

Scallop Fishery Crab Bycatch Limits

SAFE Table 3-2

Area/District	Red King Crab	<i>C. bairdi</i>	<i>C. opilio</i>
Yakutat District 16	NE ^a	NE	NA ^b
Yakutat District	NE	NE	NA
Prince William Sound	NE	0.5%	NA
Cook Inlet Kamishak District	30 crab	0.5%	NA
Kodiak Northeast District	0.5% or 1.0%	0.5% or 1.0%	NA
Kodiak Shelikof District	0.5% or 1.0%	0.5% or 1.0%	NA
Kodiak Southwest District	50 ^c	12,000 ^c	NA
Kodiak Semidi Islands District	NE	NE	NA
Alaska Peninsula	0.5% or 1.0%	0.5% or 1.0%	NA
Alaska Peninsula Unimak Bight District	50 ^c	12,000 ^c	NA
Bering Sea	500 crab ^c	3 tier approach	3 tier approach
Dutch Harbor	0.5% or 1.0%	0.5% or 1.0%	NA
Adak ^d	50	10,000 crab	NA

2001–2010 Trawl Survey Catch of Weathervane Scallops

