



NOAA
FISHERIES

- Alaska
Fisheries
Science
Center

Amendment 91 Vessel Master Survey & Pacific cod and other fleet questionnaires

September 2017
NPFMC Groundfish Plan Team
(reprised for the SSPT, May, 2018)
[Al(l)an H.]² (via B. Garber-Yonts)

Points of the talk

- Tell you a little about the Amendment 91 Vessel Master Survey that's part of the Econ SAFE
- Discuss a draft Pacific cod questionnaire
- Would these types of surveys be useful for other stock assessments?
- Next steps.

Key Elements of Amendment 91 EDR (Described in the Economic SAFE)

- Limited Economic data collected to help evaluate the effectiveness of Amendment 91 Chinook avoidance incentives.
- **Vessel Master Survey**
 - ~ 120 surveys per year 2012-2016 – very informative but can evolve to be more useful

Amendment 91 vessel master survey

- Amendment 91 vessel master survey* is focused on asking AFA pollock skippers about their experiences with
 - The chinook hard cap & Incentive Plan Agreements (IPAs)
 - Other closed areas
 - Fishing and environmental conditions.
- Survey (from all skippers) is due June 1 the year after the fishing year, so interpreting timing of fishing information can be hard.

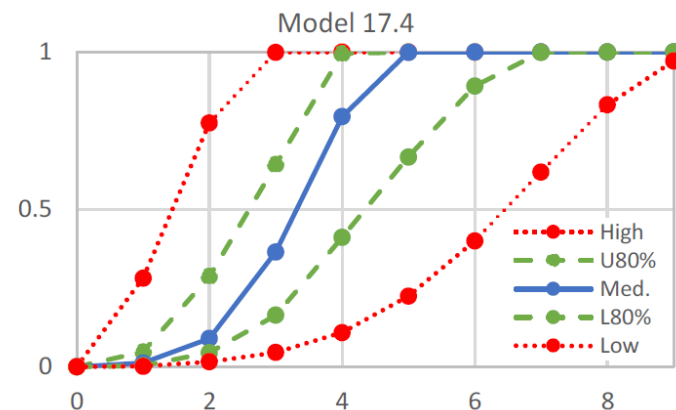
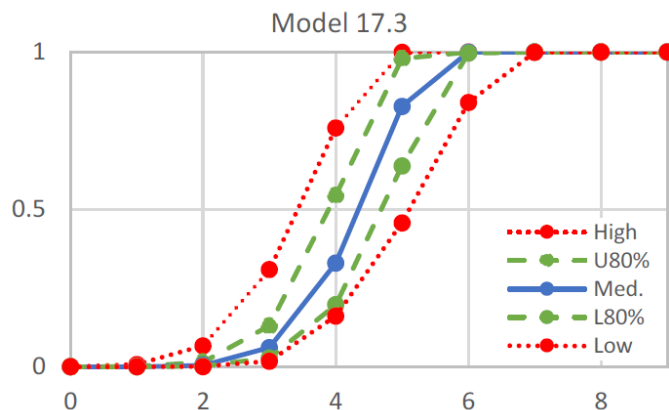
* <http://www.psmfc.org/chinookedr/EDR/vms.pdf>

A91 Vessel Master Survey Discussion

- The SAFE summary provides evidence of successes and limitations of these data collections, and updates information reported to the Council in 2014 (NPFMC, 2014).
- AFSC awaits further direction from the Council for revising the EDR Program in general.
- AFSC is preparing a technical report which will discuss data elements in more detail. Many items could be improved with small changes in wording.

DRAFT Pacific Cod Questionnaire

- Why?
 - Was suggested in the PT Pcod modeling subcommittee
 - Encourage stakeholder involvement
 - Learn more about changes in the fishery & in fishing conditions
 - Collect perceptions of these changes
 - Provide justification for changes in selectivity in the assessment model



DRAFT Pacific Cod Questionnaire

- How? Our short term plan is to...
 - Ask for Plan Team input on our questionnaire
 - Distribute to a small number of knowledgeable fishery participants
 - Summarize results
 - Discuss the process and consider next steps.

DRAFT Pacific Cod Questionnaire

- What? Questions:
 1. Are there particular years where changes in Pacific cod fishing conditions (e.g., CPUE or selectivity/availability) occurred, and how would you describe those changes? For example, were there certain years or periods when fishing required much more effort or longer distances to fish, did the distribution of fish change, were different sizes of fish encountered, did gear specifications change, did management changes have a big effect, etc.?
 2. What management changes have impacted your fishing the most? Please note the year on the table below.
 3. It is very clear in observer and other fisheries data that fishing conditions change during the year. Is there a general manner in which you would describe these seasonal patterns? (Feel free to describe several patterns or variations if things have changed over the years.)

DRAFT Pacific Cod Questionnaire

- What? Questions (continued):
 4. How do you decide to make a significant move within a fishing trip? Do you have rules that determine when you decide to move?
 5. What other factors do you think that scientists should know about the fishing conditions that you experience?
 6. Have you noticed changes in the biology of the fish? For example, periods of much shorter fish, fat fish, flesh condition, parasites?

DRAFT Pacific Cod Questionnaire

Year	Select Management Actions	Pacific cod TAC (1000t)	Pacific cod Catch (1000t)	Age 3+ biomass (1000t)	First Wholesale Pacific cod price (\$ / round weight Lb)	West Coast No 2 Diesel Retail Prices Dollars per Gallon	Ice cover index	Sea Surface Temp (May)	Bottom Temp Summer
1982		79	70	1,073			8.18	4.04	2.27
1983		120	103	1,211			4.42	1.71	3.02
1984		210	133	1,090			7.49	2.92	2.33
...									
2016		239	208	1,308		2.557			

Discussion

- Do you think this is a good idea?
- Should we collect information and historical and in-season fishing conditions from other fleets?
- Immediately this would allow us to get fisher input on historical shifts and anomalies
- In-season information could also provide valuable short-term information on changes. Over time, this would provide a rich time series of in-season variation that could be combined with other data sources.

Even more discussion

- Separating a skipper questionnaire / survey from other Economic Data Report elements would improve communication and information sharing between scientists and resource users while reducing political conflicts of economic data collection.
- Need to ensure that we get broad input from fishery participants.

The very last slide.

- Questions?? Comments?? Suggestions?? Top-secret recommendations??

What we'd like from the Plan Team:

- Time to update A91 vessel master survey?
- Support Pacific cod experimental questionnaire?
- Interested in steps to develop a broader survey of fisher experiences? We want to be sure that get useful information for assessment authors.